

KANSAS CORPORATION COMMISSION
OIL & GAS CONSERVATION DIVISION

TEMPORARY ABANDONMENT WELL APPLICATION

OPERATOR: License#
Name:
Address 1:
Address 2:
City: State: Zip:
Contact Person:
Phone:
Contact Person Email:
Field Contact Person:
Field Contact Person Phone:

API No. 15-
Spot Description:
Sec. Twp. S. R.
GPS Location: Lat: Long:
Datum: NAD27 NAD83 WGS84
County: Elevation:
Lease Name: Well #:
Well Type: Oil Gas OG WSW Other:
SWD Permit #: ENHR Permit #:
Gas Storage Permit #:
Spud Date: Date Shut-In:

Table with 7 columns: Conductor, Surface, Production, Intermediate, Liner, Tubing. Rows include Size, Setting Depth, Amount of Cement, Top of Cement, Bottom of Cement.

Casing Fluid Level from Surface: How Determined? Date:
Casing Squeeze(s): to w / sacks of cement, to w / sacks of cement. Date:
Do you have a valid Oil & Gas Lease? Yes No
Depth and Type: Junk in Hole at Tools in Hole at Casing Leaks: Yes No Depth of casing leak(s):
Type Completion: ALT. I ALT. II Depth of: DV Tool: w / sacks of cement Port Collar: w / sack of cement
Packer Type: Size: Inch Set at: Feet
Total Depth: Plug Back Depth: Plug Back Method:

Geological Data:

Table with 4 columns: Formation Name, Formation Top, Formation Base, Completion Information. Rows 1 and 2.

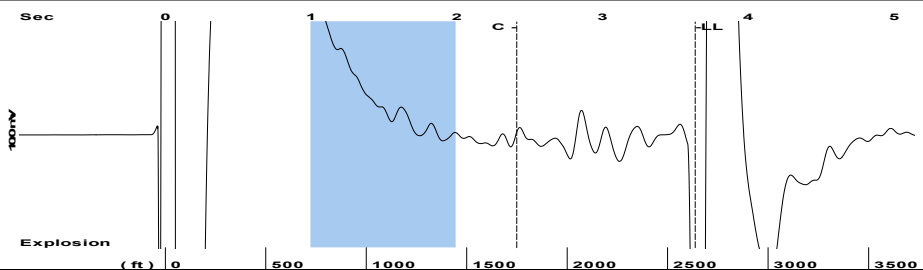
UNDER PENALTY OF PERJURY I HEREBY ATTEST THAT THE INFORMATION CONTAINED HEREIN IS TRUE AND CORRECT TO THE BEST OF MY KNOWLEDGE

Submitted Electronically

Do NOT Write in This Space - KCC USE ONLY
Date Tested: Results: Date Plugged: Date Repaired: Date Put Back in Service:
Review Completed by: Comments:
TA Approved: Yes Denied Date:

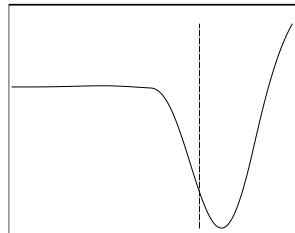
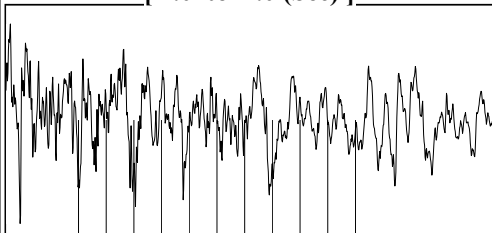
Mail to the Appropriate KCC Conservation Office:

Table with 2 columns: Office Address, Phone. Rows for KCC District Office #1, #2, #3, #4.



Filter Type High Pass Automatic Collar Count Yes Time 3.637 sec
 Manual Acoustic Veloc 1405.98 ft/s Manual JTS/sec 17.5747 Joints 65.9275 Jts
 Depth 2637.10 ft

[1.0 to 2.0 (Sec)]



Analysis Method: Automatic

NO PRESSURE DATA AVAILABLE

Change in Pressure 11911.04 psi PT16854
 Range 0 - ? psi
 Change in Time 1.25 min

Production Current Potential
 Oil - * - BBL/D
 Water - * - BBL/D
 Gas - * - Mscf/D
 IPR Method Vogel
 PBHP/SBHP - * -
 Production Efficiency 0.0

Casing Pressure 0.7 psi (g)
 Casing Pressure Buildup 11911.0 psi
 1.25 min
 Gas/Liquid Interface Pressure 1.5 psi (g)

Liquid Level Depth 2637.10 ft

Tubing Intake Depth - * - ft

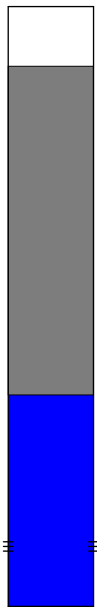
Formation Depth 3850.00 ft

Oil 40 deg.API
 Water 1.05 Sp.Gr.H2O
 Gas 0.58 Sp.Gr.AIR

Acoustic Velocity 1450.15 ft/s

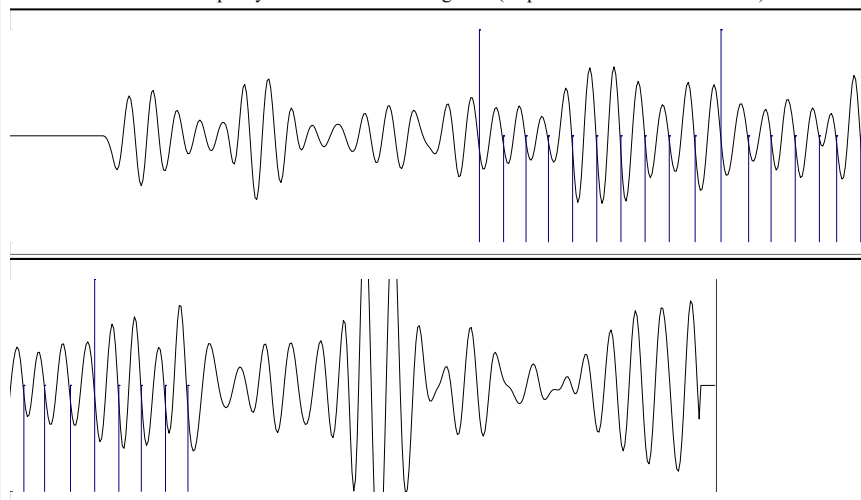
Formation Submergence
 Total Gaseous Liquid Column HT (TVD) 1213 ft
 Equivalent Gas Free Liquid HT (TVD) 227 ft

8-27-24



Producing
 Annular Gas Flow - * - Mscf/D
 % Liquid 19 %

Tubing Intake - * - psi (g)
 Producing BHP 105.6 psi (g)
 Static BHP - * - psi (g)



Acoustic Velocity 1450.15 ft/s Joints counted 24
 Joints Per Second 18.1269 jts/sec Joints to liquid level 65.9275
 Depth to liquid level 2637.1 ft Filter Width 15.5747 19.5747
 Automatic Collar Count Yes Time to 1st Collar 1.088 2.412

08/28/2024

Zach Patterson
Patterson Energy LLC
PO BOX 400
HAYS, KS 67601-0400

Re: Temporary Abandonment
API 15-163-03540-00-00
CODDINGTON 1
NE/4 Sec.34-09S-20W
Rooks County, Kansas

Dear Zach Patterson:

"Your temporary abandonment (TA) application for the well listed above has been approved. In accordance with K.A.R. 82-3-111 the TA status of this well will expire 08/28/2025.

- * If you return this well to service or plug it, please notify the District Office.
- * If you sell this well you are required to file a Transfer of Operator form, T-1.
- * If the well will remain temporarily abandoned, you must submit a new TA application, CP-111, before 08/28/2025.

You may contact me at the number above if you have questions.

Very truly yours,

RICHARD WILLIAMS"