

KANSAS CORPORATION COMMISSION
OIL & GAS CONSERVATION DIVISION

TEMPORARY ABANDONMENT WELL APPLICATION

OPERATOR: License# _____
 Name: _____
 Address 1: _____
 Address 2: _____
 City: _____ State: _____ Zip: _____ + _____
 Contact Person: _____
 Phone: (_____) _____
 Contact Person Email: _____
 Field Contact Person: _____
 Field Contact Person Phone: (_____) _____

API No. 15- _____
 Spot Description: _____
 _____ - _____ - _____ - _____ Sec. _____ Twp. _____ S. R. _____ E W
 _____ feet from N / S Line of Section
 _____ feet from E / W Line of Section
 GPS Location: Lat: _____, Long: _____
(e.g. xx.xxxxx) (e.g. -xxx.xxxxx)
 Datum: NAD27 NAD83 WGS84
 County: _____ Elevation: _____ GL KB
 Lease Name: _____ Well #: _____
 Well Type: (check one) Oil Gas OG WSW Other: _____
 SWD Permit #: _____ ENHR Permit #: _____
 Gas Storage Permit #: _____
 Spud Date: _____ Date Shut-In: _____

	Conductor	Surface	Production	Intermediate	Liner	Tubing
Size						
Setting Depth						
Amount of Cement						
Top of Cement						
Bottom of Cement						

Casing Fluid Level from Surface: _____ How Determined? _____ Date: _____
 Casing Squeeze(s): _____ to _____ w / _____ sacks of cement, _____ to _____ w / _____ sacks of cement. Date: _____
(top) (bottom) (top) (bottom)
 Do you have a valid Oil & Gas Lease? Yes No
 Depth and Type: Junk in Hole at _____ Tools in Hole at _____ Casing Leaks: Yes No Depth of casing leak(s): _____
(depth) (depth)
 Type Completion: ALT. I ALT. II Depth of: DV Tool: _____ w / _____ sacks of cement Port Collar: _____ w / _____ sack of cement
(depth) (depth)
 Packer Type: _____ Size: _____ Inch Set at: _____ Feet
 Total Depth: _____ Plug Back Depth: _____ Plug Back Method: _____

Geological Data:

Formation Name	Formation Top	Formation Base	Completion Information
1. _____	At: _____	to _____ Feet	Perforation Interval _____ to _____ Feet or Open Hole Interval _____ to _____ Feet
2. _____	At: _____	to _____ Feet	Perforation Interval _____ to _____ Feet or Open Hole Interval _____ to _____ Feet

UNDER PENALTY OF PERJURY I HEREBY ATTEST THAT THE INFORMATION CONTAINED HEREIN IS TRUE AND CORRECT TO THE BEST OF MY KNOWLEDGE

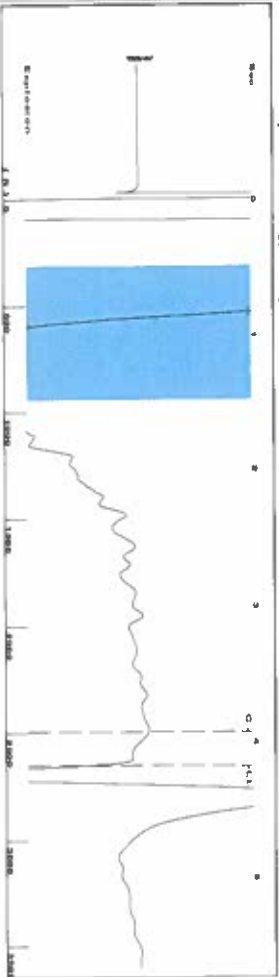
Submitted Electronically

Do NOT Write in This Space - KCC USE ONLY	Date Tested: _____	Results: _____	Date Plugged: _____	Date Repaired: _____	Date Put Back in Service: _____
	Review Completed by: _____ Comments: _____				
TA Approved: <input type="checkbox"/> Yes <input type="checkbox"/> Denied Date: _____					

Mail to the Appropriate KCC Conservation Office:

	KCC District Office #1 - 210 E. Frontview, Suite A, Dodge City, KS 67801	Phone 620.682.7933
	KCC District Office #2 - 3450 N. Rock Road, Building 600, Suite 601, Wichita, KS 67226	Phone 316.337.7400
	KCC District Office #3 - 137 E. 21st St., Chanute, KS 66720	Phone 620.902.6450
	KCC District Office #4 - 2301 E. 13th Street, Hays, KS 67601-2651	Phone 785.261.6250

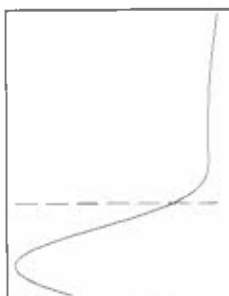
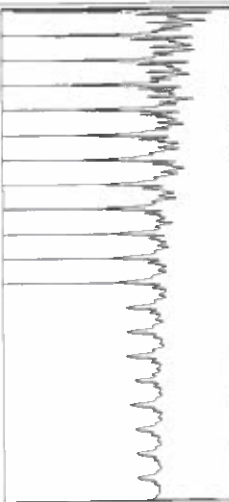
Group: Merit Energy Company-Ulysses Well: English G-2 (acquired on: 08/12/24 13:14:14)



Filter Type High Pass
Manual Acoustic Velo 1262.95 ft/s
Automatic Collar Count Yes
Manual JTS/sec 19.9203

[0.5 to 1.5 (Sec)]

Time 4.181 sec
Joints 83.5742 Jts
Depth 2649.30 ft



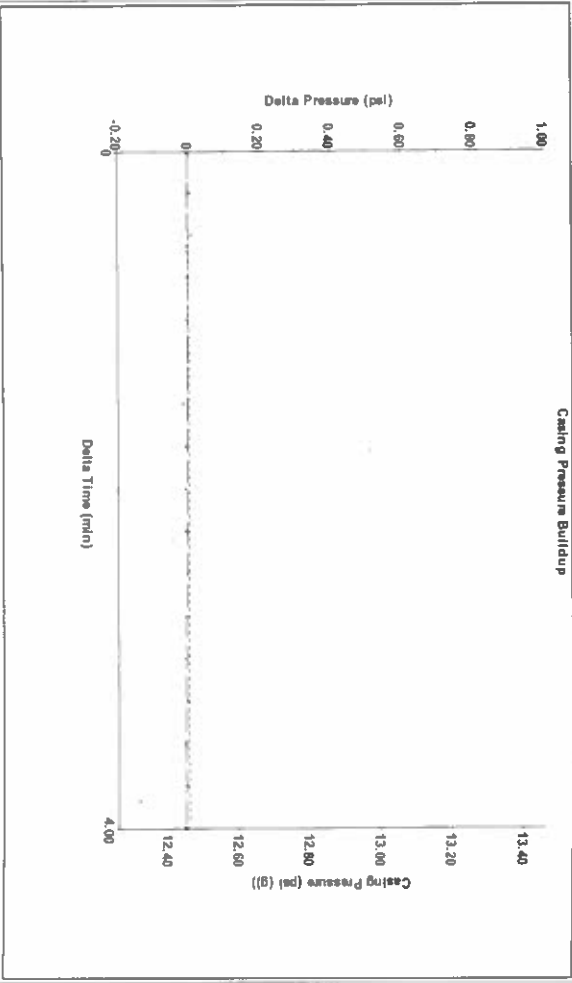
Analysis Method: Automatic

Group: Merit Energy Company-Ulysses Well: English G-2 (acquired on: 08/12/24 13:14:14)

Production	Potential	Casing Pressure	Producing
Oil - *	BBL/D - *	12.5 psi (g)	Pump Intake 123.5 psi (g)
Water - *	BBL/D - *	Casing Pressure Buildup -0.010 psi	Producing BHP 126.3 psi (g)
Gas - *	Mscf/D - *	4.00 min	Static BHP - * psi (g)
IPR Method	Vogel - *	Gas/Liquid Interface Pressure 14.3 psi (g)	% Liquid 100 %
PBHP/SBHP	Production Efficiency 0.0	Liquid Level Depth 2649.30 ft	
Oil 40 deg API		Pump Intake Depth 2972.00 ft	
Water 1.05 Sp.Gr./H ₂ O		Formation Depth 2978.00 ft	
Gas 0.74 Sp.Gr./AIR			
Acoustic Velocity 1267.31 ft/s			

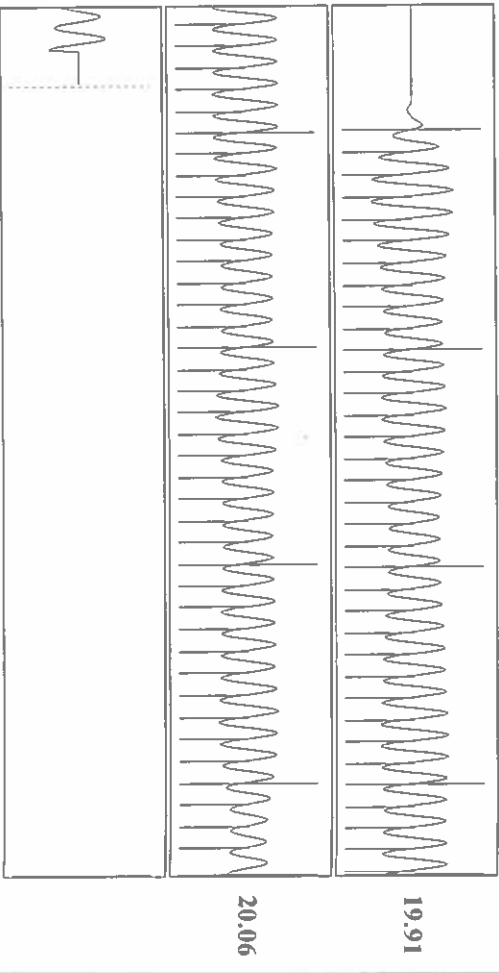


Group: Merit Energy Company-Ulysses Well: English G-2 (acquired on: 08/12/24 13:14:14)



Change in Pressure -0.01 psi
Change in Time 4.00 min
PTT 8788
Range
0 - ? psi

Group: Merit Energy Company-Ulysses Well: English G-2 (acquired on: 08/12/24 13:14:14)



Acoustic Velocity 1267.31 ft/s
Joints Per Second 19.989 jts/sec
Depth to liquid level 2649.3 ft
Automatic Collar Count Yes
Joints counted 73
Time to liquid level 83.5742
Filter Width 17.9203
Time to 1st Collar 0.284
3.936

08/29/2024

Idania Medina
Merit Energy Company, LLC
13727 Noel Road, Suite 1200
Dallas, TX 75240-7362

Re: Temporary Abandonment
API 15-067-20415-00-00
English G 2
NE/4 Sec.04-28S-35W
Grant County, Kansas

Dear Idania Medina:

"Your temporary abandonment (TA) application for the well listed above has been approved. In accordance with K.A.R. 82-3-111 the TA status of this well will expire 08/29/2025.

- * If you return this well to service or plug it, please notify the District Office.
- * If you sell this well you are required to file a Transfer of Operator form, T-1.
- * If the well will remain temporarily abandoned, you must submit a new TA application, CP-111, before 08/29/2025.

You may contact me at the number above if you have questions.

Very truly yours,

Michael Maier"