

KANSAS CORPORATION COMMISSION
OIL & GAS CONSERVATION DIVISION

TEMPORARY ABANDONMENT WELL APPLICATION

OPERATOR: License#
Name:
Address 1:
Address 2:
City: State: Zip:
Contact Person:
Phone:
Contact Person Email:
Field Contact Person:
Field Contact Person Phone:

API No. 15-
Spot Description:
Sec. Twp. S. R.
GPS Location: Lat: Long:
Datum: NAD27 NAD83 WGS84
County: Elevation:
Lease Name: Well #:
Well Type: Oil Gas OG WSW Other:
SWD Permit #: ENHR Permit #:
Gas Storage Permit #:
Spud Date: Date Shut-In:

Table with 7 columns: Conductor, Surface, Production, Intermediate, Liner, Tubing. Rows include Size, Setting Depth, Amount of Cement, Top of Cement, Bottom of Cement.

Casing Fluid Level from Surface: How Determined? Date:
Casing Squeeze(s): to w / sacks of cement, to w / sacks of cement. Date:
Do you have a valid Oil & Gas Lease? Yes No
Depth and Type: Junk in Hole at Tools in Hole at Casing Leaks: Yes No Depth of casing leak(s):
Type Completion: ALT. I ALT. II Depth of: DV Tool: w / sacks of cement Port Collar: w / sack of cement
Packer Type: Size: Inch Set at: Feet
Total Depth: Plug Back Depth: Plug Back Method:

Geological Data:

Table with 4 columns: Formation Name, Formation Top, Formation Base, Completion Information. Rows 1 and 2.

UNDER PENALTY OF PERJURY I HEREBY ATTEST THAT THE INFORMATION CONTAINED HEREIN IS TRUE AND CORRECT TO THE BEST OF MY KNOWLEDGE

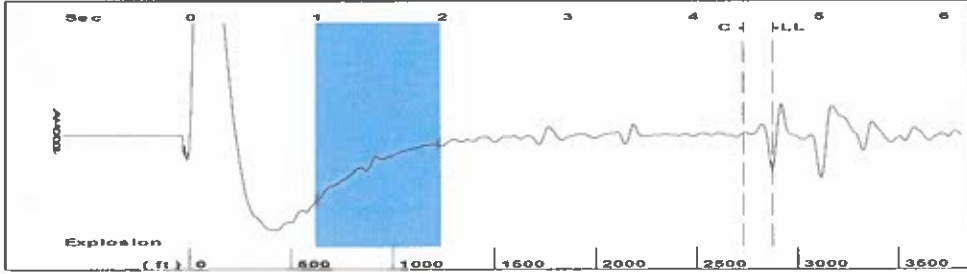
Submitted Electronically

Do NOT Write in This Space - KCC USE ONLY
Date Tested: Results: Date Plugged: Date Repaired: Date Put Back in Service:
Review Completed by: Comments:
TA Approved: Yes Denied Date:

Mail to the Appropriate KCC Conservation Office:

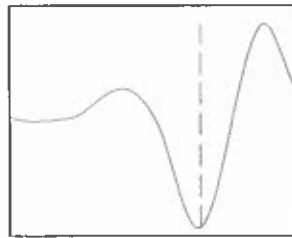
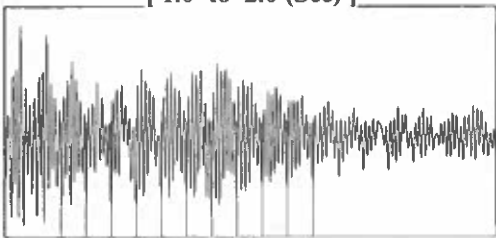
Table with 2 columns: Office Address, Phone. Rows for District Office #1, #2, #3, #4.

Group: TA'D WELLS Well: SMITH S-1 (acquired on: 08/20/24 10:38:48 )



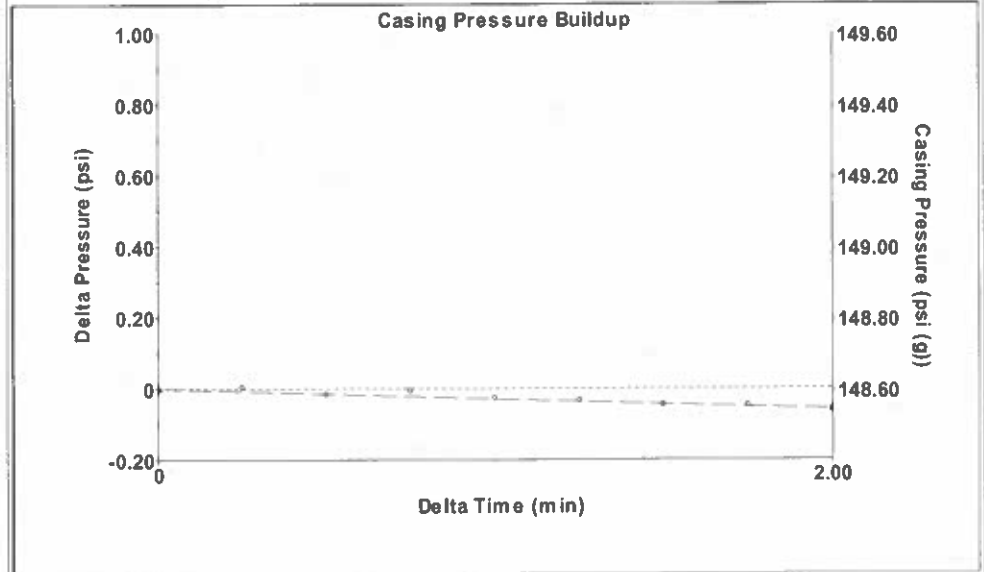
Filter Type High Pass Automatic Collar Count Yes Time 4.636 sec  
 Manual Acoustic Velo 1235.87 ft/s Manual JTS/sec 19.4932 Joints 90.7921 Jts  
 Depth 2878.11 ft

[ 1.0 to 2.0 (Sec) ]



Analysis Method: Automatic

Group: TA'D WELLS Well: SMITH S-1 (acquired on: 08/20/24 10:38:48 )



Change in Pressure -0.06 psi PT10411  
 Change in Time 2.00 min Range 0 - ? psi

Group: TA'D WELLS Well: SMITH S-1 (acquired on: 08/20/24 10:38:48 )

|                          |                     |                                      |
|--------------------------|---------------------|--------------------------------------|
| <b>Production</b>        | <b>Potential</b>    | <b>Casing Pressure</b>               |
| Oil - * -                | - * - BBL/D         | 148.6 psi (g)                        |
| Water - * -              | - * - BBL/D         | Casing Pressure Buildup              |
| Gas - * -                | - * - Mscf/D        | -0.1 psi                             |
|                          |                     | 2.00 min                             |
| <b>IPR Method</b>        | <b>Vogel</b>        | <b>Gas/Liquid Interface Pressure</b> |
| PBHP/SBHP                | - * -               | 161.0 psi (g)                        |
| Production Efficiency    | 0.0                 |                                      |
| Oil 40 deg API           |                     | <b>Liquid Level Depth</b>            |
| Water 1.05 Sp.Gr.H2O     |                     | 2878.11 ft                           |
| Gas 0.74 Sp.Gr.AIR       |                     | <b>Pump Intake Depth</b>             |
|                          |                     | 3250.00 ft                           |
| <b>Acoustic Velocity</b> | <b>1241.63 ft/s</b> | <b>Formation Depth</b>               |
|                          |                     | 3250.00 ft                           |

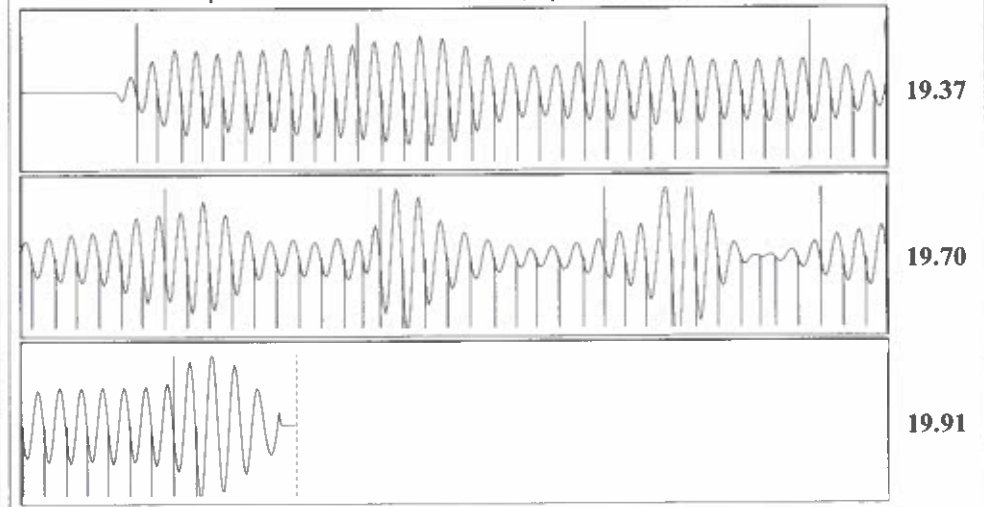


**Producing**

Annular Gas Flow 0 Mscf/D  
 % Liquid 100 %

**Pump Intake**  
 285.4 psi (g)  
**Producing BHP**  
 285.4 psi (g)  
**Static BHP**  
 - \* - psi (g)

Group: TA'D WELLS Well: SMITH S-1 (acquired on: 08/20/24 10:38:48 )



|                        |                 |                        |                 |
|------------------------|-----------------|------------------------|-----------------|
| Acoustic Velocity      | 1241.63 ft/s    | Joints counted         | 81              |
| Joints Per Second      | 19.5841 jts/sec | Joints to liquid level | 90.7921         |
| Depth to liquid level  | 2878.11 ft      | Filter Width           | 17.4932 21.4932 |
| Automatic Collar Count | Yes             | Time to 1st Collar     | 0.268 4.404     |

Conservation Division  
District Office No. 1  
210 E. Frontview, Suite A  
Dodge City, KS 67801



Phone: 620-682-7933  
<http://kcc.ks.gov/>

Andrew J. French, Chairperson  
Dwight D. Keen, Commissioner  
Annie Kuether, Commissioner

Laura Kelly, Governor

08/29/2024

Idania Medina  
Merit Energy Company, LLC  
13727 Noel Road, Suite 1200  
Dallas, TX 75240-7362

Re: Temporary Abandonment  
API 15-129-10020-00-00  
Smith S 1  
NW/4 Sec.06-32S-42W  
Morton County, Kansas

Dear Idania Medina:

"Your temporary abandonment (TA) application for the well listed above has been approved. In accordance with K.A.R. 82-3-111 the TA status of this well will expire 08/29/2025.

- \* If you return this well to service or plug it, please notify the District Office.
- \* If you sell this well you are required to file a Transfer of Operator form, T-1.
- \* If the well will remain temporarily abandoned, you must submit a new TA application, CP-111, before 08/29/2025.

You may contact me at the number above if you have questions.

Very truly yours,

Michael Maier"