

KANSAS CORPORATION COMMISSION
OIL & GAS CONSERVATION DIVISION

TEMPORARY ABANDONMENT WELL APPLICATION

OPERATOR: License#
Name:
Address 1:
Address 2:
City: State: Zip:
Contact Person:
Phone:
Contact Person Email:
Field Contact Person:
Field Contact Person Phone:

API No. 15-
Spot Description:
Sec. Twp. S. R.
GPS Location: Lat: Long:
Datum: NAD27 NAD83 WGS84
County: Elevation:
Lease Name: Well #:
Well Type: Oil Gas OG WSW Other:
SWD Permit #: ENHR Permit #:
Gas Storage Permit #:
Spud Date: Date Shut-In:

Table with 7 columns: Conductor, Surface, Production, Intermediate, Liner, Tubing. Rows include Size, Setting Depth, Amount of Cement, Top of Cement, Bottom of Cement.

Casing Fluid Level from Surface: How Determined? Date:
Casing Squeeze(s): to w / sacks of cement, to w / sacks of cement. Date:
Do you have a valid Oil & Gas Lease? Yes No
Depth and Type: Junk in Hole at Tools in Hole at Casing Leaks: Yes No Depth of casing leak(s):
Type Completion: ALT. I ALT. II Depth of: DV Tool: w / sacks of cement Port Collar: w / sack of cement
Packer Type: Size: Inch Set at: Feet
Total Depth: Plug Back Depth: Plug Back Method:

Geological Date:

Table with 4 columns: Formation Name, Formation Top, Formation Base, Completion Information. Rows 1 and 2.

UNDER PENALTY OF PERJURY I HEREBY ATTEST THAT THE INFORMATION CONTAINED HEREIN IS TRUE AND CORRECT TO THE BEST OF MY KNOWLEDGE

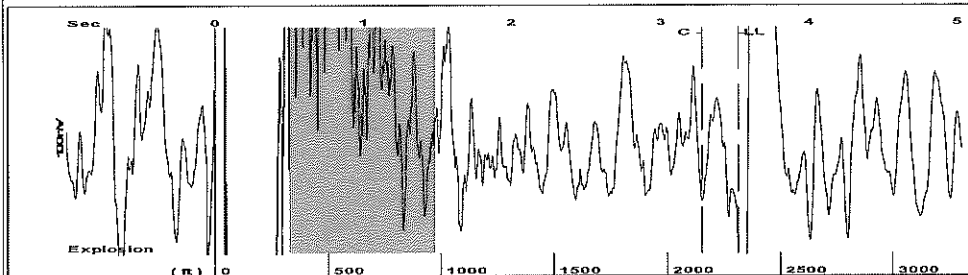
Submitted Electronically

Do NOT Write in This Space - KCC USE ONLY
Date Tested: Results: Date Plugged: Date Repaired: Date Put Back in Service:
Review Completed by: Comments:
TA Approved: Yes Denied Date:

Mail to the Appropriate KCC Conservation Office:

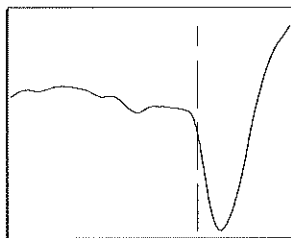
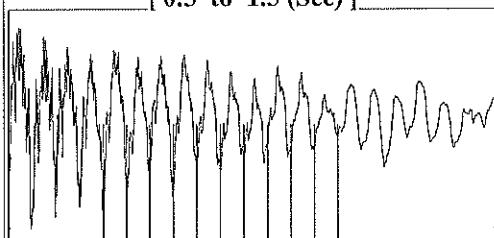
Map of Kansas with 4 numbered districts. Table with 2 columns: Office Name/Address, Phone Number.

Group: MyWells Well: OEDING (acquired on: 08/21/24 18:27:32)



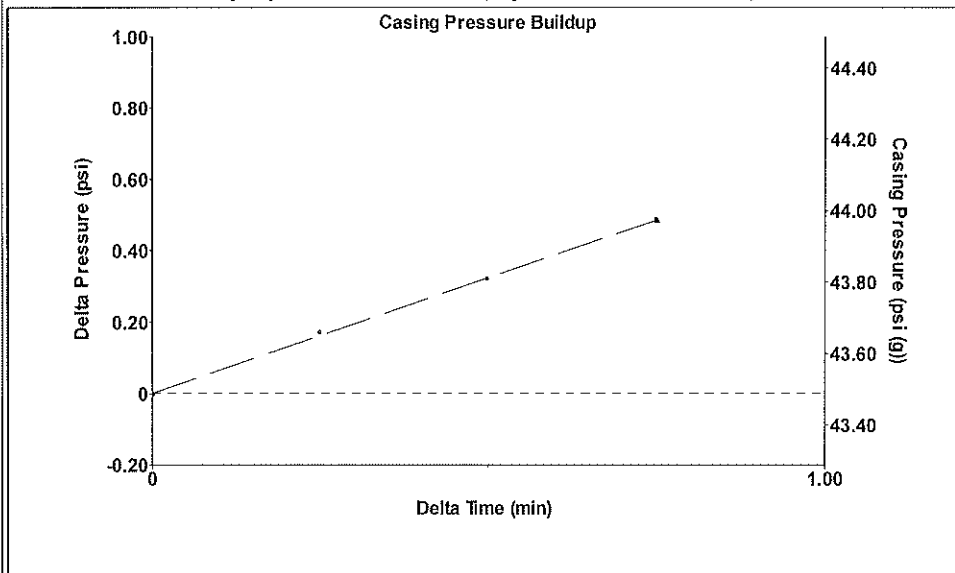
Filter Type High Pass Automatic Collar Count Yes Time 3.523 sec  
 Manual Acoustic Vel 1315.35 ft/s Manual JTS/sec 20.7469 Joints 73.0033 Jts  
 Depth 2314.21 ft

[ 0.5 to 1.5 (Sec) ]



Analysis Method: Automatic

Group: MyWells Well: OEDING (acquired on: 08/21/24 18:27:32)

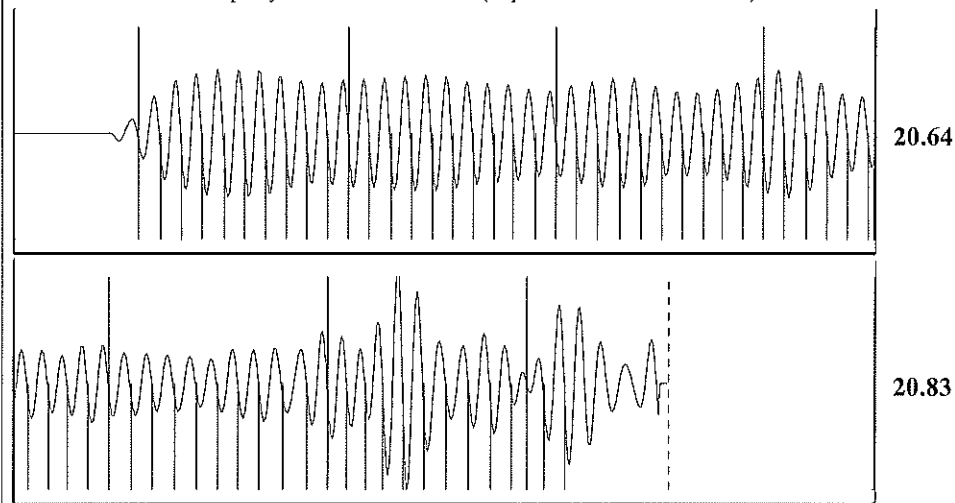


Change in Pressure 0.48 psi PT4091  
 Change in Time 0.75 min Range 0 - ? psi

Group: MyWells Well: OEDING (acquired on: 08/21/24 18:27:32)

Production	Potential	Casing Pressure		Producing
Current	- * - BBL/D	43.5 psi (g)		Annular
Oil 0	- * - BBL/D	Casing Pressure Buildup		Gas Flow
Water 40	- * - Mscf/D	0.5 psi		7 Mscf/D
Gas 25.0		0.75 min		% Liquid
IPR Method	Vogel	Gas/Liquid Interface Pressure		100 %
PBHP/SBHP	- * -	46.6 psi (g)		
Production Efficiency	0.0	Liquid Level Depth		
Oil 40 deg.API		2314.21 ft		
Water 1.05 Sp.Gr.H2O		Pump Intake Depth		
Gas 0.75 Sp.Gr.AIR		4200.00 ft		
Acoustic Velocity	1313.77 ft/s	Formation Depth		
		500.00 ft		
Formation Submergence		Pump Intake		
Total Gaseous Liquid Column HT (TVD)	1886 ft	904.0 psi (g)		
Equivalent Gas Free Liquid HT (TVD)	1886 ft	Producing BHP		
Acoustic Test		44.2 psi (g)		
		Static BHP		
		- * - psi (g)		

Group: MyWells Well: OEDING (acquired on: 08/21/24 18:27:32)



Acoustic Velocity 1313.77 ft/s Joints counted 62  
 Joints Per Second 20.7219 jts/sec Joints to liquid level 73.0033  
 Depth to liquid level 2314.21 ft Filter Width 18.7469 22.7469  
 Automatic Collar Count Yes Time to 1st Collar 0.288 3.28

Conservation Division  
District Office No. 2  
3450 N. Rock Road  
Building 600, Suite 601  
Wichita, KS 67226



Phone: 316-337-7400  
<http://kcc.ks.gov/>

Andrew J. French, Chairperson  
Dwight D. Keen, Commissioner  
Annie Kuether, Commissioner

Laura Kelly, Governor

08/30/2024

Jon F. messenger  
Messenger Petroleum, Inc.  
525 S MAIN ST  
KINGMAN, KS 67068-1968

Re: Temporary Abandonment  
API 15-095-00152-00-01  
OEDING 1  
SW/4 Sec.07-29S-08W  
Kingman County, Kansas

Dear Jon F. messenger:

"Your temporary abandonment (TA) application for the well listed above has been approved. In accordance with K.A.R. 82-3-111 the TA status of this well will expire 08/30/2025.

- \* If you return this well to service or plug it, please notify the District Office.
- \* If you sell this well you are required to file a Transfer of Operator form, T-1.
- \* If the well will remain temporarily abandoned, you must submit a new TA application, CP-111, before 08/30/2025.

You may contact me at the number above if you have questions.

Very truly yours,

Neil Lake, ECRS"