

KANSAS CORPORATION COMMISSION
OIL & GAS CONSERVATION DIVISION

TEMPORARY ABANDONMENT WELL APPLICATION

OPERATOR: License#
Name:
Address 1:
Address 2:
City: State: Zip:
Contact Person:
Phone:
Contact Person Email:
Field Contact Person:
Field Contact Person Phone:

API No. 15-
Spot Description:
Sec. Twp. S. R.
GPS Location: Lat: Long:
Datum: NAD27 NAD83 WGS84
County: Elevation:
Lease Name: Well #:
Well Type: Oil Gas OG WSW Other:
SWD Permit #: ENHR Permit #:
Gas Storage Permit #:
Spud Date: Date Shut-In:

Table with 7 columns: Conductor, Surface, Production, Intermediate, Liner, Tubing. Rows include Size, Setting Depth, Amount of Cement, Top of Cement, Bottom of Cement.

Casing Fluid Level from Surface: How Determined? Date:
Casing Squeeze(s): to w / sacks of cement, to w / sacks of cement. Date:
Do you have a valid Oil & Gas Lease? Yes No
Depth and Type: Junk in Hole at Tools in Hole at Casing Leaks: Yes No Depth of casing leak(s):
Type Completion: ALT. I ALT. II Depth of: DV Tool: w / sacks of cement Port Collar: w / sack of cement
Packer Type: Size: Inch Set at: Feet
Total Depth: Plug Back Depth: Plug Back Method:

Geological Data:

Table with 4 columns: Formation Name, Formation Top, Formation Base, Completion Information. Rows 1 and 2.

UNDER PENALTY OF PERJURY I HEREBY ATTEST THAT THE INFORMATION CONTAINED HEREIN IS TRUE AND CORRECT TO THE BEST OF MY KNOWLEDGE

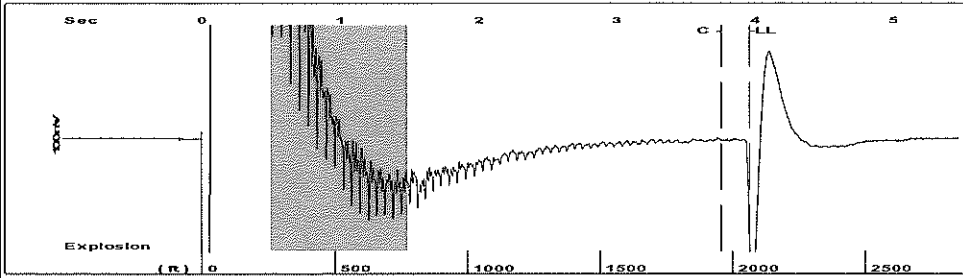
Submitted Electronically

Do NOT Write in This Space - KCC USE ONLY
Date Tested: Results: Date Plugged: Date Repaired: Date Put Back in Service:
Review Completed by: Comments:
TA Approved: Yes Denied Date:

Mail to the Appropriate KCC Conservation Office:

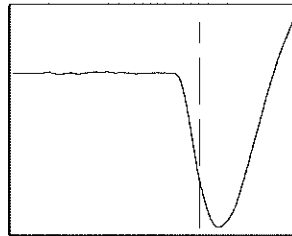
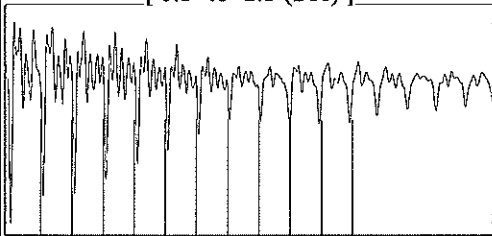
Table with 3 columns: District Office, Address, Phone. Rows for District Office #1, #2, #3, #4.

Group: MyWells Well: Graber 3 (acquired on: 08/19/24 19:07:47)



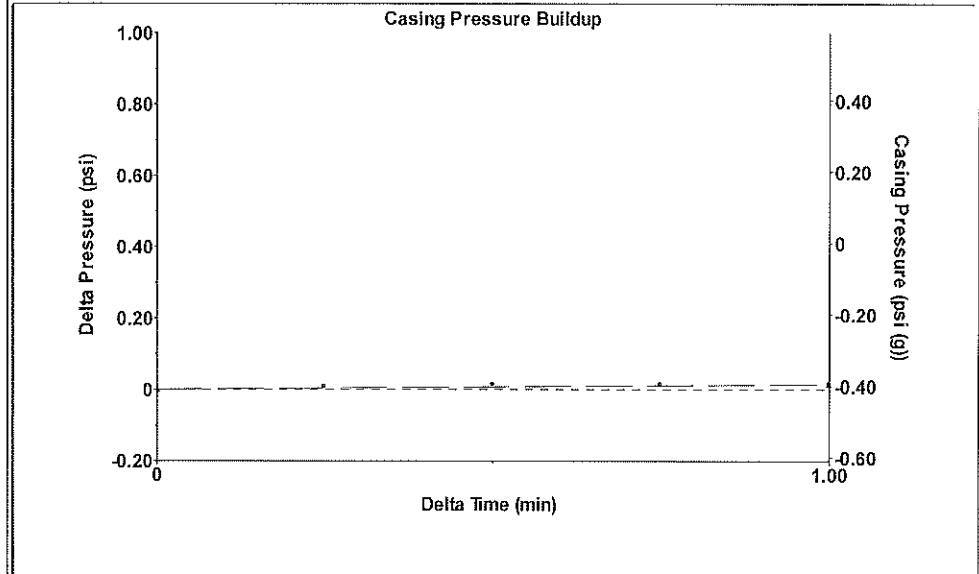
Filter Type High Pass Automatic Collar Count Yes Time 3.961 sec  
 Manual Acoustic Velo990.625 ft/s Manual JTS/sec 15.625 Joints 65.1029 Jts  
 Depth 2063.76 ft

[ 0.5 to 1.5 (Sec) ]



Analysis Method: Automatic

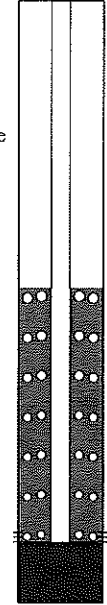
Group: MyWells Well: Graber 3 (acquired on: 08/19/24 19:07:47)



Change in Pressure 0.01 psi PT4091  
 Change in Time 1.00 min Range 0 - ? psi

Group: MyWells Well: Graber 3 (acquired on: 08/19/24 19:07:47)

|                                      |                  |                                      |
|--------------------------------------|------------------|--------------------------------------|
| <b>Production</b>                    | <b>Potential</b> | <b>Casing Pressure</b>               |
| Oil 1.5                              | - * - BBL/D      | -0.4 psi (g)                         |
| Water 145                            | - * - BBL/D      | Casing Pressure Buildup              |
| Gas 12.0                             | - * - Mscf/D     | 0.015 psi                            |
|                                      |                  | 1.00 min                             |
| <b>IPR Method</b>                    | <b>Vogel</b>     | <b>Gas/Liquid Interface Pressure</b> |
| PBHP/SBHP                            | - * -            | 0.6 psi (g)                          |
| <b>Production Efficiency</b>         | 0.0              |                                      |
| Oil 40 deg.API                       |                  | <b>Liquid Level Depth</b>            |
| Water 1.05 Sp.Gr.H2O                 |                  | 2063.76 ft                           |
| Gas 0.93 Sp.Gr.AIR                   |                  | <b>Pump Intake Depth</b>             |
|                                      |                  | 4365.00 ft                           |
| <b>Acoustic Velocity</b>             | 1042.04 ft/s     | <b>Formation Depth</b>               |
|                                      |                  | 4316.00 ft                           |
| <b>Formation Submergence</b>         |                  |                                      |
| Total Gaseous Liquid Column HT (TVD) | 2301 ft          |                                      |
| Equivalent Gas Free Liquid HT (TVD)  | 2301 ft          |                                      |



**Producing**

Annular Gas Flow 0 Mscf/D

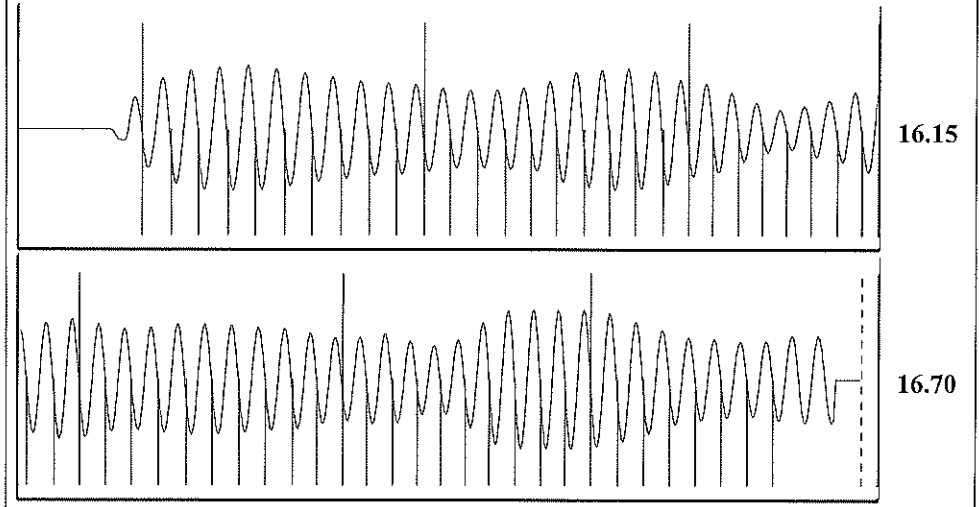
% Liquid 100 %

Pump Intake 764.8 psi (g)

Producing BHP 749.4 psi (g)

Static BHP - \* - psi (g)

Group: MyWells Well: Graber 3 (acquired on: 08/19/24 19:07:47)



|                        |                |                        |               |
|------------------------|----------------|------------------------|---------------|
| Acoustic Velocity      | 1042.04 ft/s   | Joints counted         | 57            |
| Joints Per Second      | 16.436 jts/sec | Joints to liquid level | 65.1029       |
| Depth to liquid level  | 2063.76 ft     | Filter Width           | 13.625 17.625 |
| Automatic Collar Count | Yes            | Time to 1st Collar     | 0.288 3.756   |

Conservation Division  
District Office No. 2  
3450 N. Rock Road  
Building 600, Suite 601  
Wichita, KS 67226



Phone: 316-337-7400  
<http://kcc.ks.gov/>

Andrew J. French, Chairperson  
Dwight D. Keen, Commissioner  
Annie Kuether, Commissioner

Laura Kelly, Governor

08/30/2024

Jon F. messenger  
Messenger Petroleum, Inc.  
525 S MAIN ST  
KINGMAN, KS 67068-1968

Re: Temporary Abandonment  
API 15-077-21403-00-00  
GRABER 3  
NW/4 Sec.01-31S-07W  
Harper County, Kansas

Dear Jon F. messenger:

"Your temporary abandonment (TA) application for the well listed above has been approved. In accordance with K.A.R. 82-3-111 the TA status of this well will expire 08/30/2025.

- \* If you return this well to service or plug it, please notify the District Office.
- \* If you sell this well you are required to file a Transfer of Operator form, T-1.
- \* If the well will remain temporarily abandoned, you must submit a new TA application, CP-111, before 08/30/2025.

You may contact me at the number above if you have questions.

Very truly yours,

Neil Lake, ECRS"