

KANSAS CORPORATION COMMISSION  
OIL & GAS CONSERVATION DIVISION

TEMPORARY ABANDONMENT WELL APPLICATION

OPERATOR: License# \_\_\_\_\_  
 Name: \_\_\_\_\_  
 Address 1: \_\_\_\_\_  
 Address 2: \_\_\_\_\_  
 City: \_\_\_\_\_ State: \_\_\_\_\_ Zip: \_\_\_\_\_ + \_\_\_\_\_  
 Contact Person: \_\_\_\_\_  
 Phone: ( \_\_\_\_\_ ) \_\_\_\_\_  
 Contact Person Email: \_\_\_\_\_  
 Field Contact Person: \_\_\_\_\_  
 Field Contact Person Phone: ( \_\_\_\_\_ ) \_\_\_\_\_

API No. 15- \_\_\_\_\_  
 Spot Description: \_\_\_\_\_  
 \_\_\_\_\_ - \_\_\_\_\_ - \_\_\_\_\_ - \_\_\_\_\_ Sec. \_\_\_\_\_ Twp. \_\_\_\_\_ S. R. \_\_\_\_\_  E  W  
 \_\_\_\_\_ feet from  N /  S Line of Section  
 \_\_\_\_\_ feet from  E /  W Line of Section  
 GPS Location: Lat: \_\_\_\_\_, Long: \_\_\_\_\_  
(e.g. xx.xxxxx) (e.g. -xxx.xxxxx)  
 Datum:  NAD27  NAD83  WGS84  
 County: \_\_\_\_\_ Elevation: \_\_\_\_\_  GL  KB  
 Lease Name: \_\_\_\_\_ Well #: \_\_\_\_\_  
 Well Type: (check one)  Oil  Gas  OG  WSW  Other: \_\_\_\_\_  
 SWD Permit #: \_\_\_\_\_  ENHR Permit #: \_\_\_\_\_  
 Gas Storage Permit #: \_\_\_\_\_  
 Spud Date: \_\_\_\_\_ Date Shut-In: \_\_\_\_\_

	Conductor	Surface	Production	Intermediate	Liner	Tubing
Size						
Setting Depth						
Amount of Cement						
Top of Cement						
Bottom of Cement						

Casing Fluid Level from Surface: \_\_\_\_\_ How Determined? \_\_\_\_\_ Date: \_\_\_\_\_  
 Casing Squeeze(s): \_\_\_\_\_ to \_\_\_\_\_ w / \_\_\_\_\_ sacks of cement, \_\_\_\_\_ to \_\_\_\_\_ w / \_\_\_\_\_ sacks of cement. Date: \_\_\_\_\_  
(top) (bottom) (top) (bottom)  
 Do you have a valid Oil & Gas Lease?  Yes  No  
 Depth and Type:  Junk in Hole at \_\_\_\_\_  Tools in Hole at \_\_\_\_\_ Casing Leaks:  Yes  No Depth of casing leak(s): \_\_\_\_\_  
(depth) (depth)  
 Type Completion:  ALT. I  ALT. II Depth of:  DV Tool: \_\_\_\_\_ w / \_\_\_\_\_ sacks of cement  Port Collar: \_\_\_\_\_ w / \_\_\_\_\_ sack of cement  
(depth) (depth)  
 Packer Type: \_\_\_\_\_ Size: \_\_\_\_\_ Inch Set at: \_\_\_\_\_ Feet  
 Total Depth: \_\_\_\_\_ Plug Back Depth: \_\_\_\_\_ Plug Back Method: \_\_\_\_\_

**Geological Data:**

Formation Name	Formation Top	Formation Base	Completion Information
1. _____	At: _____	to _____ Feet	Perforation Interval _____ to _____ Feet or Open Hole Interval _____ to _____ Feet
2. _____	At: _____	to _____ Feet	Perforation Interval _____ to _____ Feet or Open Hole Interval _____ to _____ Feet

UNDER PENALTY OF PERJURY I HEREBY ATTEST THAT THE INFORMATION CONTAINED HEREIN IS TRUE AND CORRECT TO THE BEST OF MY KNOWLEDGE

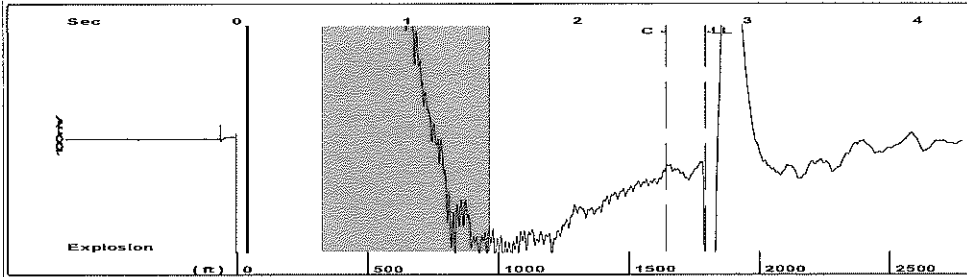
Submitted Electronically

<b>Do NOT Write in This Space - KCC USE ONLY</b>	Date Tested: _____	Results: _____	Date Plugged: _____	Date Repaired: _____	Date Put Back in Service: _____
	Review Completed by: _____ Comments: _____				
TA Approved: <input type="checkbox"/> Yes <input type="checkbox"/> Denied Date: _____					

Mail to the Appropriate KCC Conservation Office:

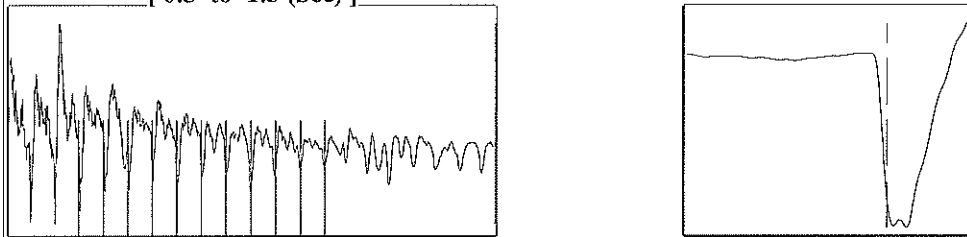
	KCC District Office #1 - 210 E. Frontview, Suite A, Dodge City, KS 67801	Phone 620.682.7933
	KCC District Office #2 - 3450 N. Rock Road, Building 600, Suite 601, Wichita, KS 67226	Phone 316.337.7400
	KCC District Office #3 - 137 E. 21st St., Chanute, KS 66720	Phone 620.902.6450
	KCC District Office #4 - 2301 E. 13th Street, Hays, KS 67601-2651	Phone 785.261.6250

Group: MyWells Well: LAYMAN (acquired on: 08/14/24 16:41:49)



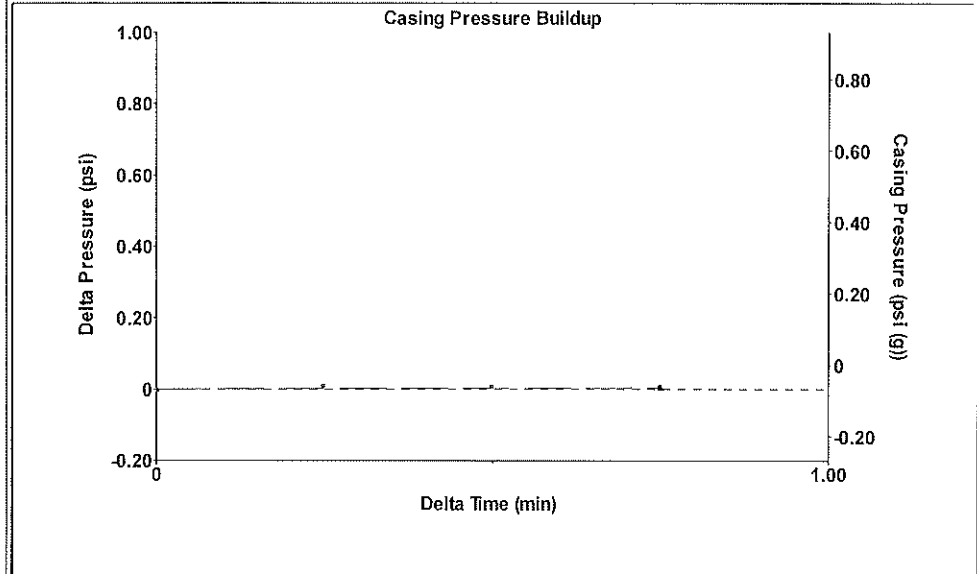
Filter Type High Pass Automatic Collar Count Yes Time 2.755 sec  
 Manual Acoustic Velo 1252.96 ft/s Manual JTS/sec 19.7628 Joints 56.5759 Jts  
 Depth 1793.46 ft

[ 0.5 to 1.5 (Sec) ]



Analysis Method: Automatic

Group: MyWells Well: LAYMAN (acquired on: 08/14/24 16:41:49)

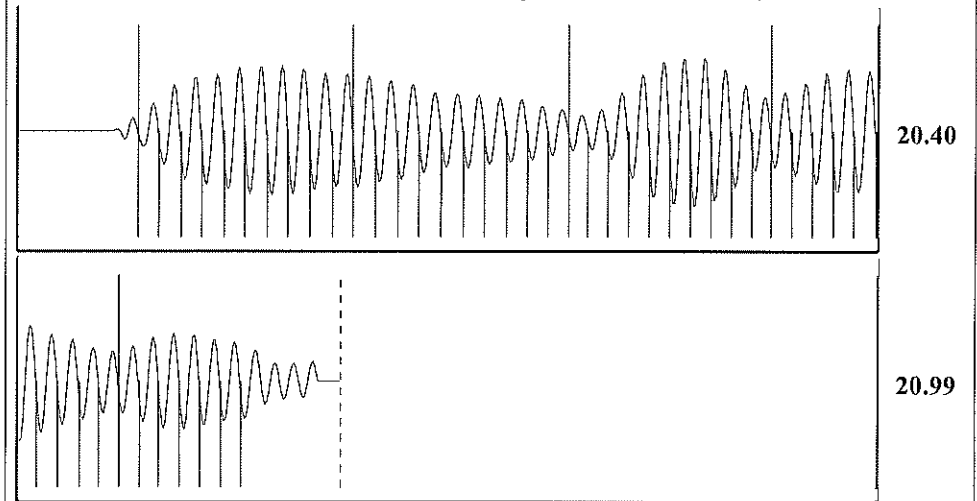


Change in Pressure 0.00 psi PT4091  
 Change in Time 0.75 min Range 0 - ? psi

Group: MyWells Well: LAYMAN (acquired on: 08/14/24 16:41:49)

<b>Production</b>		<b>Casing Pressure</b>			<b>Producing</b>
Current	Potential		-0.1 psi (g)		
Oil 0.125	- * - BBL/D		Casing Pressure Buildup		Annular
Water 70	- * - BBL/D		0.005 psi		Gas Flow
Gas 70.0	- * - Mscf/D		0.75 min		0 Mscf/D
IPR Method	Vogel	Gas/Liquid Interface Pressure	0.6 psi (g)		% Liquid
PBHP/SBHP	- * -				100 %
Production Efficiency	0.0	Liquid Level Depth	1793.46 ft		
Oil 40 deg.API		Pump Intake Depth	4085.00 ft		
Water 1.05 Sp.Gr.H2O		Formation Depth	4067.00 ft		
Gas 0.68 Sp.Gr.AIR					
Acoustic Velocity	1301.96 ft/s				
<b>Formation Submergence</b>		Total Gaseous Liquid Column HT (TVD)	2292 ft	Pump Intake	774.9 psi (g)
		Equivalent Gas Free Liquid HT (TVD)	2292 ft	Producing BHP	769.1 psi (g)
				Static BHP	- * - psi (g)
<b>Acoustic Test</b>					

Group: MyWells Well: LAYMAN (acquired on: 08/14/24 16:41:49)



Acoustic Velocity 1301.96 ft/s Joints counted 46  
 Joints Per Second 20.5357 jts/sec Joints to liquid level 56.5759  
 Depth to liquid level 1793.46 ft Filter Width 17.7628 21.7628  
 Automatic Collar Count Yes Time to 1st Collar 0.28 2.52

Conservation Division  
District Office No. 2  
3450 N. Rock Road  
Building 600, Suite 601  
Wichita, KS 67226



Phone: 316-337-7400  
<http://kcc.ks.gov/>

Andrew J. French, Chairperson  
Dwight D. Keen, Commissioner  
Annie Kuether, Commissioner

Laura Kelly, Governor

08/30/2024

Jon F. Messenger  
Messenger Petroleum, Inc.  
525 S MAIN ST  
KINGMAN, KS 67068-1968

Re: Temporary Abandonment  
API 15-095-20351-00-01  
LAYMAN 1  
NW/4 Sec.04-29S-07W  
Kingman County, Kansas

Dear Jon F. Messenger:

"Your temporary abandonment (TA) application for the well listed above has been approved. In accordance with K.A.R. 82-3-111 the TA status of this well will expire 08/30/2025.

- \* If you return this well to service or plug it, please notify the District Office.
- \* If you sell this well you are required to file a Transfer of Operator form, T-1.
- \* If the well will remain temporarily abandoned, you must submit a new TA application, CP-111, before 08/30/2025.

You may contact me at the number above if you have questions.

Very truly yours,

Neil Lake, ECRS"