

KANSAS CORPORATION COMMISSION
OIL & GAS CONSERVATION DIVISION

TEMPORARY ABANDONMENT WELL APPLICATION

OPERATOR: License#
Name:
Address 1:
Address 2:
City: State: Zip:
Contact Person:
Phone:
Contact Person Email:
Field Contact Person:
Field Contact Person Phone:

API No. 15-
Spot Description:
Sec. Twp. S. R.
feet from N / S Line of Section
feet from E / W Line of Section
GPS Location: Lat: , Long:
Datum: NAD27 NAD83 WGS84
County: Elevation: GL KB
Lease Name: Well #:
Well Type: Oil Gas OG WSW Other:
SWD Permit #: ENHR Permit #:
Gas Storage Permit #:
Spud Date: Date Shut-In:

Table with 7 columns: Conductor, Surface, Production, Intermediate, Liner, Tubing. Rows include Size, Setting Depth, Amount of Cement, Top of Cement, Bottom of Cement.

Casing Fluid Level from Surface: How Determined? Date:
Casing Squeeze(s): to w / sacks of cement, to w / sacks of cement. Date:
Do you have a valid Oil & Gas Lease? Yes No
Depth and Type: Junk in Hole at Tools in Hole at Casing Leaks: Yes No Depth of casing leak(s):
Type Completion: ALT. I ALT. II Depth of: DV Tool: w / sacks of cement Port Collar: w / sack of cement
Packer Type: Size: Inch Set at: Feet
Total Depth: Plug Back Depth: Plug Back Method:

Geological Data:

Table with 4 columns: Formation Name, Formation Top, Formation Base, Completion Information. Rows 1 and 2.

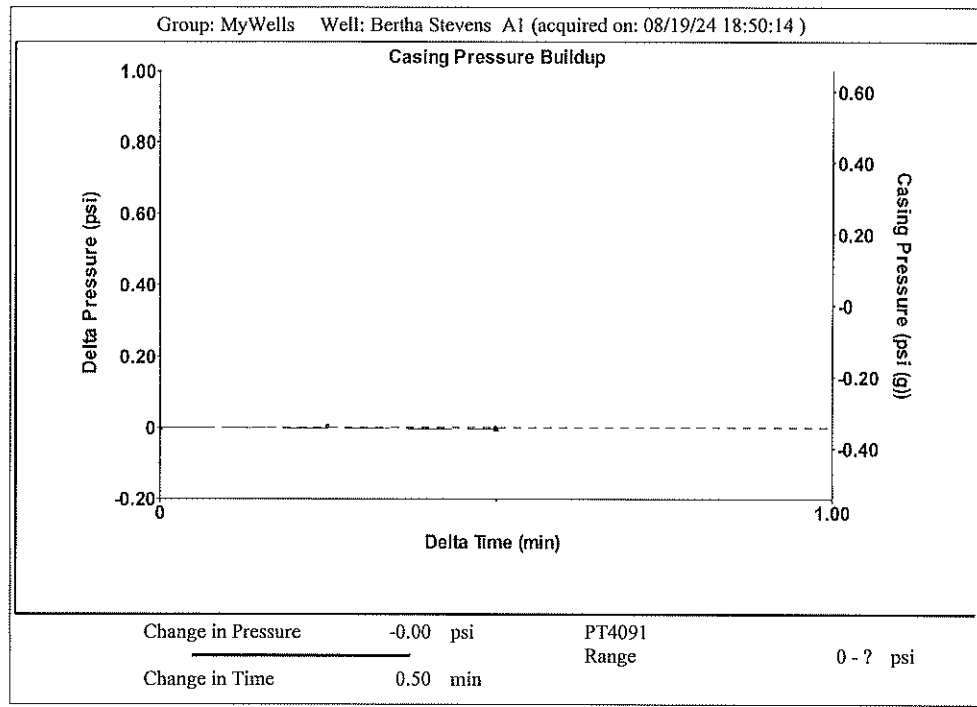
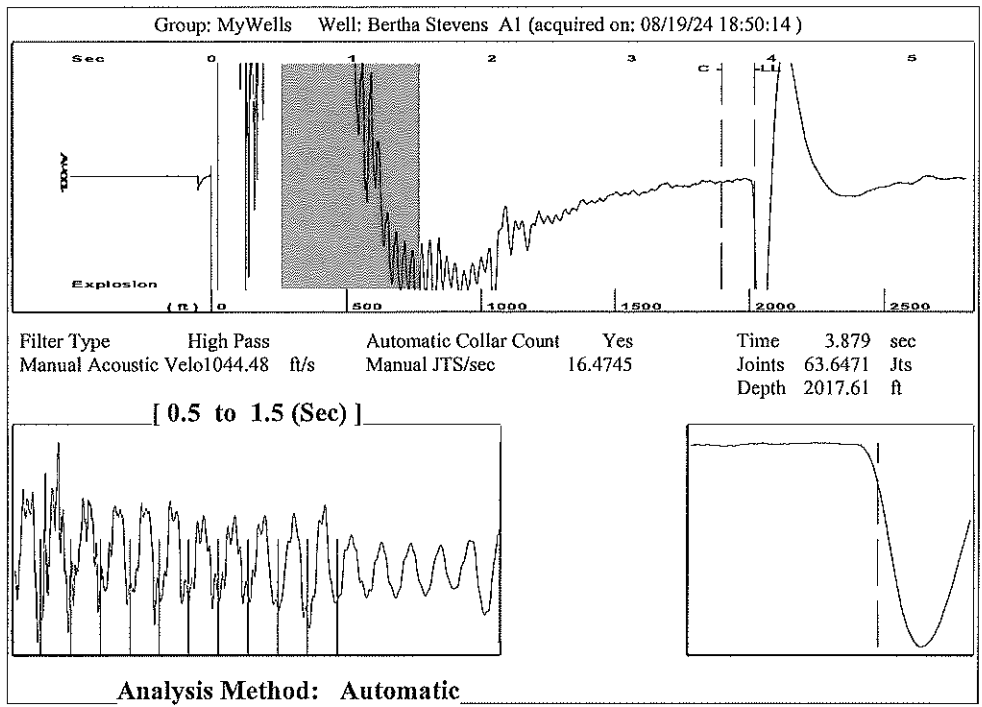
UNDER PENALTY OF PERJURY I HEREBY ATTEST THAT THE INFORMATION CONTAINED HEREIN IS TRUE AND CORRECT TO THE BEST OF MY KNOWLEDGE

Submitted Electronically

Do NOT Write in This Space - KCC USE ONLY
Date Tested: Results: Date Plugged: Date Repaired: Date Put Back in Service:
Review Completed by: Comments:
TA Approved: Yes Denied Date:

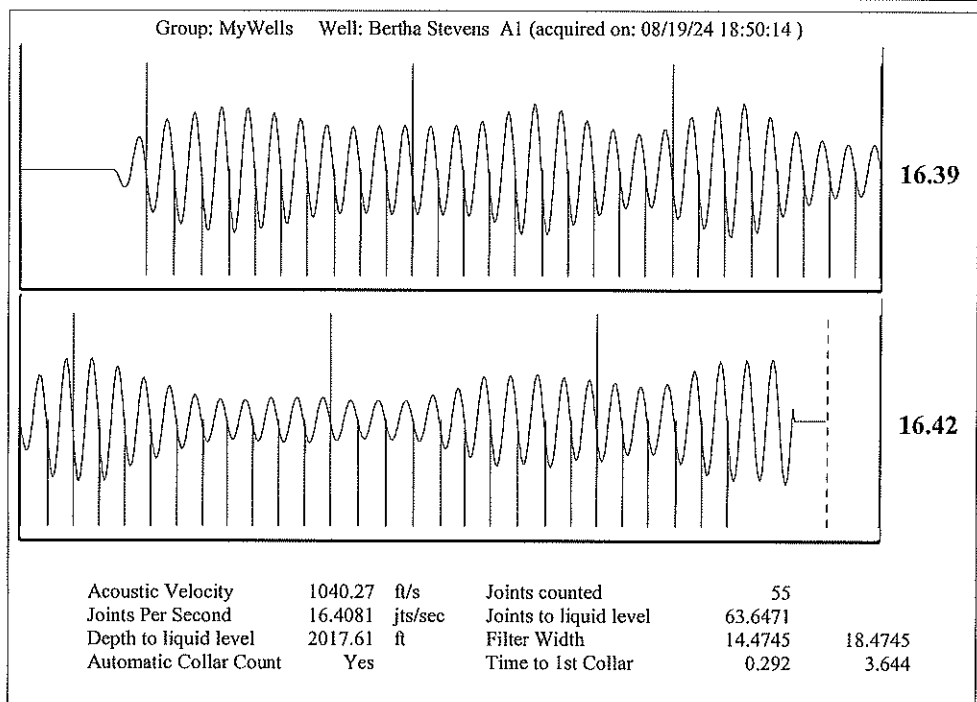
Mail to the Appropriate KCC Conservation Office:

Table with 3 columns: District Office #, Address, Phone. Rows 1-4.



Group: MyWells Well: Bertha Stevens A1 (acquired on: 08/19/24 18:50:14)

Production	Potential	Casing Pressure	Producing
Current	- *- BBL/D	-0.3 psi (g)	
Oil 2	- *- BBL/D	Casing Pressure Buildup	
Water 110	- *- Mscf/D	-0.004 psi	
Gas 15.0		0.50 min	
		Gas/Liquid Interface Pressure	Annular Gas Flow
IPR Method	Vogel	0.6 psi (g)	0 Mscf/D
PBHP/SBHP	- *-		% Liquid
Production Efficiency	0.0		100 %
		Liquid Level Depth	
Oil 40 deg.API		2017.61 ft	
Water 1.05 Sp.Gr.H2O		Pump Intake Depth	
Gas 0.93 Sp.Gr.AIR		4190.00 ft	
Acoustic Velocity	1040.27 ft/s	Formation Depth	
		4146.00 ft	
		Pump Intake	
		723.8 psi (g)	
Formation Submergence		Producing BHP	
Total Gaseous Liquid Column HT (TVD)	2172 ft	709.9 psi (g)	
Equivalent Gas Free Liquid HT (TVD)	2172 ft	Static BHP	
		- *- psi (g)	



Conservation Division
District Office No. 2
3450 N. Rock Road
Building 600, Suite 601
Wichita, KS 67226



Phone: 316-337-7400
<http://kcc.ks.gov/>

Andrew J. French, Chairperson
Dwight D. Keen, Commissioner
Annie Kuether, Commissioner

Laura Kelly, Governor

09/03/2024

Jon F. Messenger
Messenger Petroleum, Inc.
525 S MAIN ST
KINGMAN, KS 67068-1968

Re: Temporary Abandonment
API 15-095-30099-00-00
STEVENS BERTHA 1-V
SW/4 Sec.19-30S-06W
Kingman County, Kansas

Dear Jon F. Messenger:

"Your temporary abandonment (TA) application for the well listed above has been approved. In accordance with K.A.R. 82-3-111 the TA status of this well will expire 09/03/2025.

- * If you return this well to service or plug it, please notify the District Office.
- * If you sell this well you are required to file a Transfer of Operator form, T-1.
- * If the well will remain temporarily abandoned, you must submit a new TA application, CP-111, before 09/03/2025.

You may contact me at the number above if you have questions.

Very truly yours,

Neil Lake, ECRS"