

KANSAS CORPORATION COMMISSION
OIL & GAS CONSERVATION DIVISION

TEMPORARY ABANDONMENT WELL APPLICATION

OPERATOR: License#
Name:
Address 1:
Address 2:
City: State: Zip:
Contact Person:
Phone:
Contact Person Email:
Field Contact Person:
Field Contact Person Phone:

API No. 15-
Spot Description:
Sec. Twp. S. R.
GPS Location: Lat: Long:
Datum: NAD27 NAD83 WGS84
County: Elevation:
Lease Name: Well #:
Well Type: Oil Gas OG WSW Other:
SWD Permit #: ENHR Permit #:
Gas Storage Permit #:
Spud Date: Date Shut-In:

Table with 7 columns: Conductor, Surface, Production, Intermediate, Liner, Tubing. Rows include Size, Setting Depth, Amount of Cement, Top of Cement, Bottom of Cement.

Casing Fluid Level from Surface: How Determined? Date:
Casing Squeeze(s): to w / sacks of cement, to w / sacks of cement. Date:
Do you have a valid Oil & Gas Lease? Yes No
Depth and Type: Junk in Hole at Tools in Hole at Casing Leaks: Yes No Depth of casing leak(s):
Type Completion: ALT. I ALT. II Depth of: DV Tool: w / sacks of cement Port Collar: w / sack of cement
Packer Type: Size: Inch Set at: Feet
Total Depth: Plug Back Depth: Plug Back Method:

Geological Date:

Table with 4 columns: Formation Name, Formation Top, Formation Base, Completion Information. Rows 1 and 2.

UNDER PENALTY OF PERJURY I HEREBY ATTEST THAT THE INFORMATION CONTAINED HEREIN IS TRUE AND CORRECT TO THE BEST OF MY KNOWLEDGE

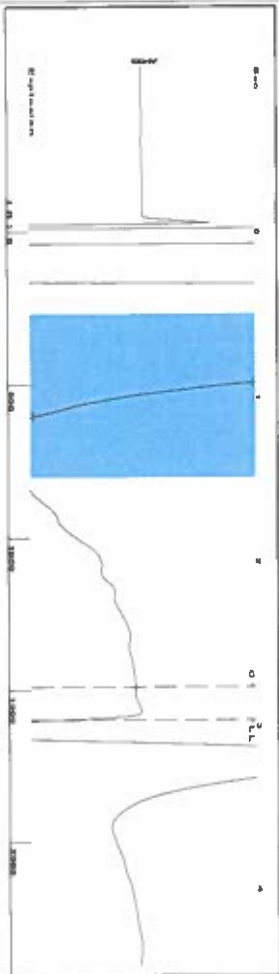
Submitted Electronically

Do NOT Write in This Space - KCC USE ONLY
Date Tested: Results: Date Plugged: Date Repaired: Date Put Back in Service:
Review Completed by: Comments:
TA Approved: Yes Denied Date:

Mail to the Appropriate KCC Conservation Office:

Table with 3 columns: District Office #, Address, Phone. Rows 1-4.

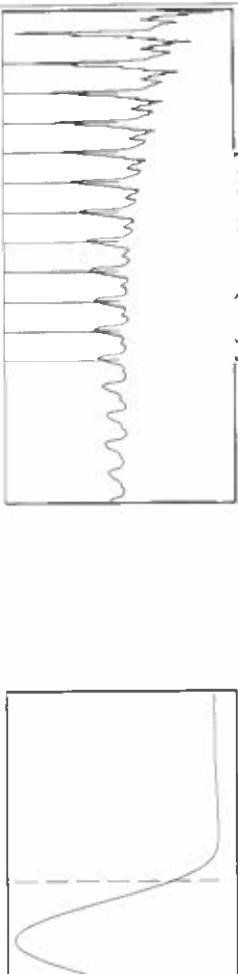
Group: Merit Energy Company-Ulysses Well: Kilgore Trust 9 (acquired on: 08/11/24 12:54:58 )



Filter Type High Pass  
Manual Acoustic Velo 1049.67 ft/s  
Automatic Collar Count Yes  
Manual JTS/sec 16.5563

Time 2.969 sec  
Joints 50.3627 Jts  
Depth 1596.50 ft

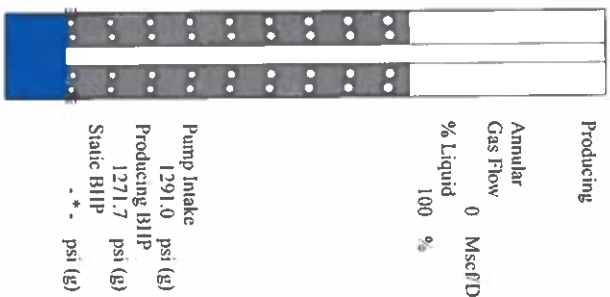
0.5 to 1.5 (Sec) |



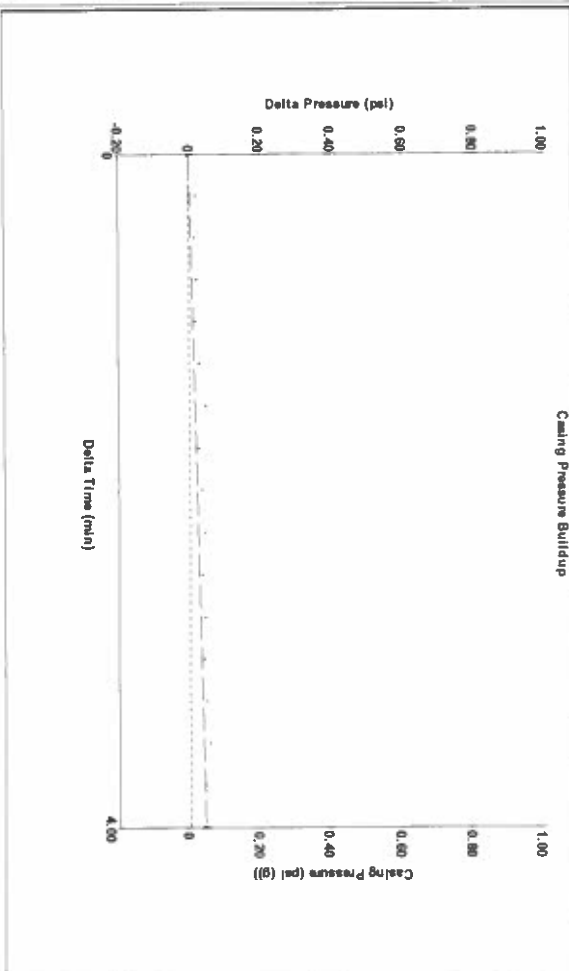
**Analysis Method: Automatic**

Group: Merit Energy Company-Ulysses Well: Kilgore Trust 9 (acquired on: 08/11/24 12:54:58 )

Production Current	Potential	Casing Pressure	Producing
Oil -*-	-*- BBL/D	0.0 psi (g)	Annular Gas Flow
Water -*-	-*- BBL/D	0.042 psi	0 Mscf/D
Gas -*-	-*- Mscf/D	4.00 min	% Liquid
IPR Method	Vogel	Gas/Liquid Interface Pressure	100 %
PBHP/SBHP	-*-	0.8 psi (g)	
Production Efficiency	0.0	Liquid Level Depth	
Oil 40 deg API		1596.50 ft	
Water 1.05 Sp Gr H2O		Pump Intake Depth	
Gas 0.90 Sp Gr AIR		5600.00 ft	
Acoustic Velocity	1075.44 ft/s	Formation Depth	
		5535.00 ft	
Formation Submergence			
Total Gaseous Liquid Column HT (TVD)			
Equivalent Gas Free Liquid HT (TVD)			
8/11/24			



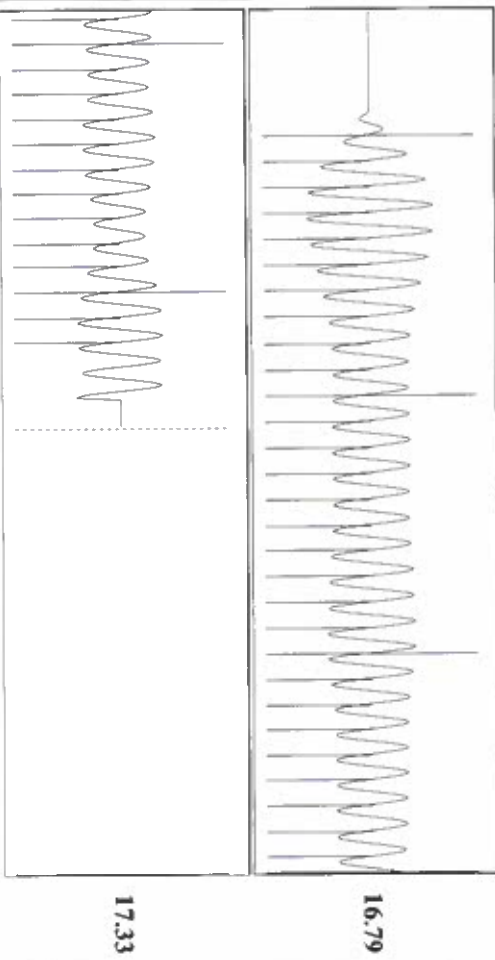
Group: Merit Energy Company-Ulysses Well: Kilgore Trust 9 (acquired on: 08/11/24 12:54:58 )



Change in Pressure 0.04 psi  
Change in Time 4.00 min

PT18788 Range 0 - 2 psi

Group: Merit Energy Company-Ulysses Well: Kilgore Trust 9 (acquired on: 08/11/24 12:54:58 )



Acoustic Velocity 1075.44 ft/s  
Joints Per Second 16.9628 Jts/Sec  
Depth to liquid level 1596.5 ft  
Automatic Collar Count Yes

Joints counted 42  
Joints to liquid level 50.3627  
Filter Width 14.5563  
Time to 1st Collar 2.768

17.33

16.79

Conservation Division  
District Office No. 1  
210 E. Frontview, Suite A  
Dodge City, KS 67801



Phone: 620-682-7933  
<http://kcc.ks.gov/>

Andrew J. French, Chairperson  
Dwight D. Keen, Commissioner  
Annie Kuether, Commissioner

Laura Kelly, Governor

09/05/2024

Idania Medina  
Merit Energy Company, LLC  
13727 Noel Road, Suite 1200  
Dallas, TX 75240-7362

Re: Temporary Abandonment  
API 15-187-21107-00-00  
Kilgore Trust 9-H20-29-39  
NE/4 Sec.20-29S-39W  
Stanton County, Kansas

Dear Idania Medina:

"Your temporary abandonment (TA) application for the well listed above has been approved. In accordance with K.A.R. 82-3-111 the TA status of this well will expire 09/05/2025.

- \* If you return this well to service or plug it, please notify the District Office.
- \* If you sell this well you are required to file a Transfer of Operator form, T-1.
- \* If the well will remain temporarily abandoned, you must submit a new TA application, CP-111, before 09/05/2025.

You may contact me at the number above if you have questions.

Very truly yours,

Michael Maier"