

KANSAS CORPORATION COMMISSION  
OIL & GAS CONSERVATION DIVISION

Form must be Typed

Form must be signed

All blanks must be complete

## TEMPORARY ABANDONMENT WELL APPLICATION

OPERATOR: License# \_\_\_\_\_

Name: \_\_\_\_\_

Address 1: \_\_\_\_\_

Address 2: \_\_\_\_\_

City: \_\_\_\_\_ State: \_\_\_\_\_ Zip: \_\_\_\_\_ + \_\_\_\_\_

Contact Person: \_\_\_\_\_

Phone: ( \_\_\_\_\_ ) \_\_\_\_\_

Contact Person Email: \_\_\_\_\_

Field Contact Person: \_\_\_\_\_

Field Contact Person Phone: ( \_\_\_\_\_ ) \_\_\_\_\_

API No. 15- \_\_\_\_\_

Spot Description: \_\_\_\_\_

\_\_\_\_ - \_\_\_\_ - \_\_\_\_ - \_\_\_\_ Sec. \_\_\_\_\_ Twp. \_\_\_\_\_ S. R. \_\_\_\_\_ ☐ E ☐ W\_\_\_\_\_ feet from ☐ N / ☐ S Line of Section\_\_\_\_\_ feet from ☐ E / ☐ W Line of Section

GPS Location: Lat: \_\_\_\_\_, Long: \_\_\_\_\_

(e.g. xx.xxxxx) (e.g. -xxx.xxxxx)

Datum: ☐ NAD27 ☐ NAD83 ☐ WGS84County: \_\_\_\_\_ Elevation: \_\_\_\_\_ ☐ GL ☐ KB

Lease Name: \_\_\_\_\_ Well #: \_\_\_\_\_

Well Type: (check one) ☐ Oil ☐ Gas ☐ OG ☐ WSW ☐ Other: \_\_\_\_\_☐ SWD Permit #: \_\_\_\_\_ ☐ ENHR Permit #: \_\_\_\_\_☐ Gas Storage Permit #: \_\_\_\_\_

Spud Date: \_\_\_\_\_ Date Shut-In: \_\_\_\_\_

	Conductor	Surface	Production	Intermediate	Liner	Tubing
Size						
Setting Depth						
Amount of Cement						
Top of Cement						
Bottom of Cement						

Casing Fluid Level from Surface: \_\_\_\_\_ How Determined? \_\_\_\_\_ Date: \_\_\_\_\_

Casing Squeeze(s): \_\_\_\_\_ to \_\_\_\_\_ w / \_\_\_\_\_ sacks of cement, \_\_\_\_\_ to \_\_\_\_\_ w / \_\_\_\_\_ sacks of cement. Date: \_\_\_\_\_  
(top) (bottom) (top) (bottom)Do you have a valid Oil & Gas Lease? ☐ Yes ☐ NoDepth and Type: ☐ Junk in Hole at \_\_\_\_\_ ☐ Tools in Hole at \_\_\_\_\_ Casing Leaks: ☐ Yes ☐ No Depth of casing leak(s): \_\_\_\_\_  
(depth) (depth)Type Completion: ☐ ALT. I ☐ ALT. II Depth of: ☐ DV Tool: \_\_\_\_\_ w / \_\_\_\_\_ sacks of cement ☐ Port Collar: \_\_\_\_\_ w / \_\_\_\_\_ sack of cement  
(depth) (depth)

Packer Type: \_\_\_\_\_ Size: \_\_\_\_\_ Inch Set at: \_\_\_\_\_ Feet

Total Depth: \_\_\_\_\_ Plug Back Depth: \_\_\_\_\_ Plug Back Method: \_\_\_\_\_

**Geological Data:****Formation Name**

Formation Top Formation Base

**Completion Information**

1. \_\_\_\_\_ At: \_\_\_\_\_ to \_\_\_\_\_ Feet Perforation Interval \_\_\_\_\_ to \_\_\_\_\_ Feet or Open Hole Interval \_\_\_\_\_ to \_\_\_\_\_ Feet

2. \_\_\_\_\_ At: \_\_\_\_\_ to \_\_\_\_\_ Feet Perforation Interval \_\_\_\_\_ to \_\_\_\_\_ Feet or Open Hole Interval \_\_\_\_\_ to \_\_\_\_\_ Feet

UNDER PENALTY OF PERJURY I HEREBY ATTEST THAT THE INFORMATION CONTAINED HEREIN IS TRUE AND CORRECT TO THE BEST OF MY KNOWLEDGE

Submitted Electronically

**Do NOT Write in This  
Space - KCC USE ONLY**

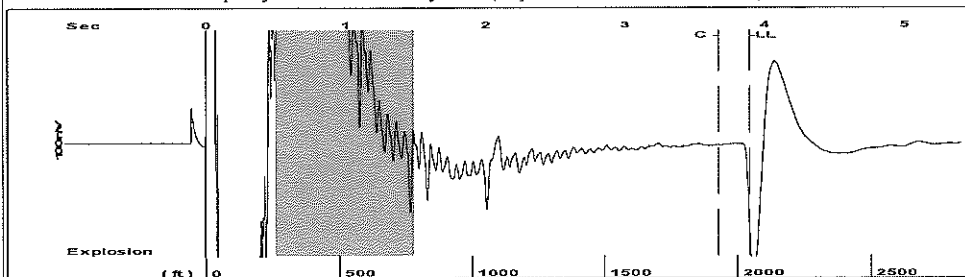
Date Tested: \_\_\_\_\_ Results: \_\_\_\_\_ Date Plugged: \_\_\_\_\_ Date Repaired: \_\_\_\_\_ Date Put Back in Service: \_\_\_\_\_

Review Completed by: \_\_\_\_\_ Comments: \_\_\_\_\_

TA Approved: ☐ Yes ☐ Denied Date: \_\_\_\_\_**Mail to the Appropriate KCC Conservation Office:**

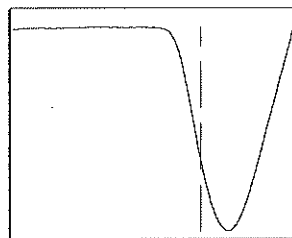
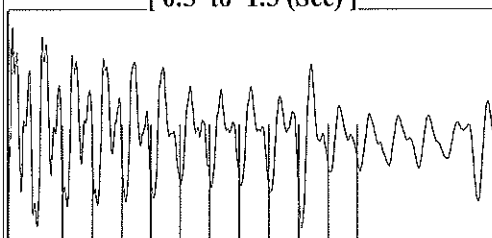
	KCC District Office #1 - 210 E. Frontview, Suite A, Dodge City, KS 67801	Phone 620.682.7933
	KCC District Office #2 - 3450 N. Rock Road, Building 600, Suite 601, Wichita, KS 67226	Phone 316.337.7400
	KCC District Office #3 - 137 E. 21st St., Chanute, KS 66720	Phone 620.902.6450
	KCC District Office #4 - 2301 E. 13th Street, Hays, KS 67601-2651	Phone 785.261.6250

Group: MyWells Well: Kelly RB 1 (acquired on: 08/19/24 18:11:46 )



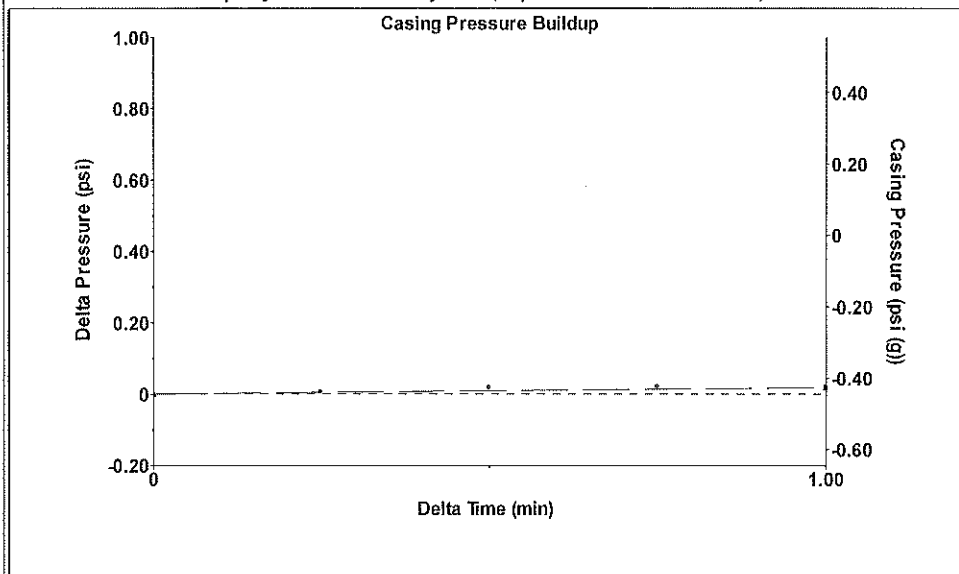
Filter Type High Pass Automatic Collar Count Yes Time 3.895 sec  
Manual Acoustic Velo 1047.93 ft/s Manual JTS/sec 16.5289 Joints 64.5184 Jts  
Depth 2045.23 ft

[ 0.5 to 1.5 (Sec) ]



Analysis Method: Automatic

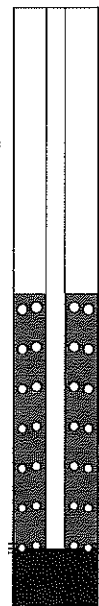
Group: MyWells Well: Kelly RB 1 (acquired on: 08/19/24 18:11:46 )



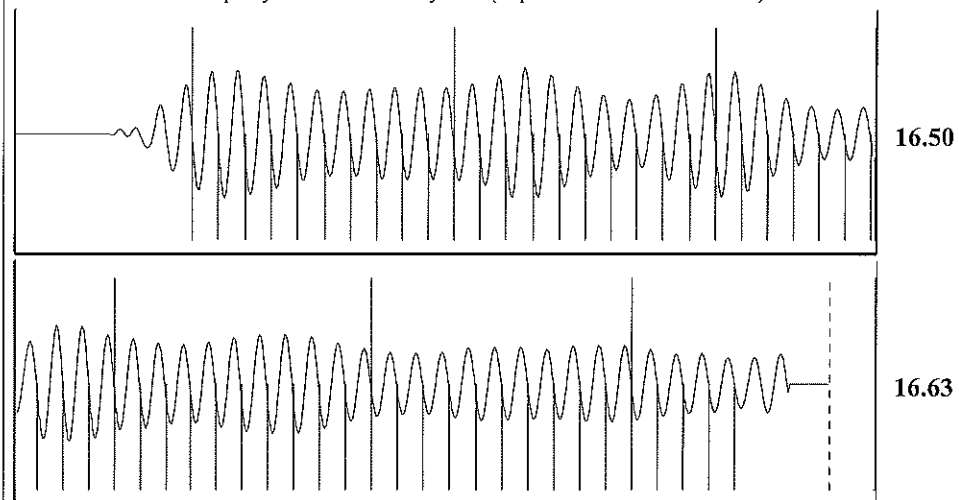
Change in Pressure 0.02 psi PT4091  
Change in Time 1.00 min Range 0 - ? psi

Group: MyWells Well: Kelly RB 1 (acquired on: 08/19/24 18:11:46 )

Production	Potential	Casing Pressure	Producing
Current	- * - BBL/D	-0.4 psi (g)	
Oil 2.5	- * - BBL/D	Casing Pressure Buildup	Annular
Water 85	- * - Mscf/D	0.019 psi	Gas Flow
Gas 10.0		1.00 min	0 Mscf/D
IPR Method	Vogel	Gas/Liquid Interface Pressure	% Liquid
PBHP/SBHP	- * -	0.5 psi (g)	100 %
Production Efficiency	0.0	Liquid Level Depth	
		2045.23 ft	
Oil 40 deg.API		Pump Intake Depth	
Water 1.05 Sp.Gr.H2O		4354.00 ft	
Gas 0.93 Sp.Gr.AIR		Formation Depth	
Acoustic Velocity	1050.18 ft/s	4343.00 ft	
Formation Submergence			Pump Intake
Total Gaseous Liquid Column HT (TVD)	2309 ft		767.4 psi (g)
Equivalent Gas Free Liquid HT (TVD)	2309 ft		Producing BHP
			764.0 psi (g)
Acoustic Test			Static BHP
			- * - psi (g)



Group: MyWells Well: Kelly RB 1 (acquired on: 08/19/24 18:11:46 )



Acoustic Velocity 1050.18 ft/s Joints counted 54  
Joints Per Second 16.5644 jts/sec Joints to liquid level 64.5184  
Depth to liquid level 2045.23 ft Filter Width 14.5289 18.5289  
Automatic Collar Count Yes Time to 1st Collar 0.412 3.672

Conservation Division  
District Office No. 2  
3450 N. Rock Road  
Building 600, Suite 601  
Wichita, KS 67226



Phone: 316-337-7400  
<http://kcc.ks.gov/>

Andrew J. French, Chairperson  
Dwight D. Keen, Commissioner  
Annie Kuether, Commissioner

Laura Kelly, Governor

09/06/2024

Jon F. Messenger  
Messenger Petroleum, Inc.  
525 S MAIN ST  
KINGMAN, KS 67068-1968

Re: Temporary Abandonment  
API 15-095-20963-00-00  
KELLY RB 1  
SE/4 Sec.35-30S-07W  
Kingman County, Kansas

Dear Jon F. Messenger:

"Your temporary abandonment (TA) application for the well listed above has been approved. In accordance with K.A.R. 82-3-111 the TA status of this well will expire 09/06/2025.

- \* If you return this well to service or plug it, please notify the District Office.
- \* If you sell this well you are required to file a Transfer of Operator form, T-1.
- \* If the well will remain temporarily abandoned, you must submit a new TA application, CP-111, before 09/06/2025.

You may contact me at the number above if you have questions.

Very truly yours,

Neil Lake, ECRS"