

KANSAS CORPORATION COMMISSION
OIL & GAS CONSERVATION DIVISION

Form must be Typed
Form must be signed

TEMPORARY ABANDONMENT WELL APPLICATION

All blanks must be complete

OPERATOR: License#
Name:
Address 1:
Address 2:
City: State: Zip:
Contact Person:
Phone:
Contact Person Email:
Field Contact Person:
Field Contact Person Phone:

API No. 15-
Spot Description:
Sec. Twp. S. R.
feet from N / S Line of Section
feet from E / W Line of Section
GPS Location: Lat: , Long:
Datum: NAD27 NAD83 WGS84
County: Elevation: GL KB
Lease Name: Well #:
Well Type: (check one) Oil Gas OG WSW Other:
SWD Permit #: ENHR Permit #:
Gas Storage Permit #:
Spud Date: Date Shut-In:

Table with 7 columns: Conductor, Surface, Production, Intermediate, Liner, Tubing. Rows include Size, Setting Depth, Amount of Cement, Top of Cement, Bottom of Cement.

Casing Fluid Level from Surface: How Determined? Date:
Casing Squeeze(s): to w / sacks of cement, to w / sacks of cement. Date:
Do you have a valid Oil & Gas Lease? Yes No
Depth and Type: Junk in Hole at Tools in Hole at Casing Leaks: Yes No Depth of casing leak(s):
Type Completion: ALT. I ALT. II Depth of: DV Tool: w / sacks of cement Port Collar: w / sack of cement
Packer Type: Size: Inch Set at: Feet
Total Depth: Plug Back Depth: Plug Back Method:

Geological Data:

Table with 4 columns: Formation Name, Formation Top, Formation Base, Completion Information. Rows 1 and 2.

UNDER PENALTY OF PERJURY I HEREBY ATTEST THAT THE INFORMATION CONTAINED HEREIN IS TRUE AND CORRECT TO THE BEST OF MY KNOWLEDGE

Submitted Electronically

Do NOT Write in This Space - KCC USE ONLY
Date Tested: Results: Date Plugged: Date Repaired: Date Put Back in Service:
Review Completed by: Comments:
TA Approved: Yes Denied Date:

Mail to the Appropriate KCC Conservation Office:

Table with 3 columns: District Office #, Address, Phone. Rows 1-4.

General

Well ID Red Fern 3507 2-16H FL
 Well Red Fern 3507 2-16H FL
 Company SD
 Operator Andrew Smith
 Lease Name Red Fern 3507 2-16H FL
 Elevation 0.00 ft
 Production Method Electrical Submersible Pump

Comment

Tubulars

Tubing OD 2.875 in
 Average Joint Length 33.176 ft
 Sliding Sleeve - * - ft
 Casing OD 7.000 in
 Liner OD - * - in
 Top of Liner - * - ft
 PBTD - * - ft
 Kelly Bushing 16.00 ft

Pump Assembly

Installation Date - * -
 Pump Intake Depth 5275.00 ft
 PIP Gage - * - ft

Gas Separator

Gas Separator Not Used
 Tubing Discharge Temp - * - deg F

Pump Configuration

	Top Pump	Pump 2	Pump 3	Pump 4	Pump 5
Pump Manufacturer	- * -	- * -	- * -	- * -	- * -
Pump Description/Series	- * -	- * -	- * -	- * -	- * -
Serial Number	- * -	- * -	- * -	- * -	- * -
Stage Count	0	0	0	0	0
Pump Housing	- * -	- * -	- * -	- * -	- * -

Total Length of Pump Assembly - * - ft
 Shroud is Not Used

Electric Equipment

Control Panel - * -
 Variable Frequency is Not Used
 Overload Set Point - * -
 Underload Set Point - * -
 Overvoltage Set Point - * -
 Undervoltage Set Point - * -
 Frequency - * -
 Pump Up Time - * -

Cable Data

Round Cable Type - * -
 Round Cable Length - * - ft
 Flat Cable Type - * -
 Flat Cable Length - * - ft

Electrical Cost

Cost Per kW-Hour - * -
 Cost Per kW - * -

Motor Assembly Description

	Top Motor	Motor 2	Motor 3	Motor 4
Manufacturer	- * -	- * -	- * -	- * -
Series	- * -	- * -	- * -	- * -
Type	- * -	- * -	- * -	- * -
HP	- * -	- * -	- * -	- * -
Volts/Amps	- * -	- * -	- * -	- * -
Total Length of Motor Assembly	- * - ft		Installation Date	- * -

Electrical Parameters

AMPS		VOLTS	
A Input	- * -	BA Input	- * -
B Input	- * -	CB Input	- * -
C Input	- * -	AC Input	- * -
		A-gnd	- * -
		B-gnd	- * -
		C-gnd	- * -
Kilowatt	- * -	Power Factor	- * -
		Date and Time of Measurement	- * -

Conditions

Pressure

Static BHP 365.2 psi (g)
 Static BHP Method Acoustic
 Static BHP Date 08/13/2024
 Producing BHP 366.3 psi (g)
 Producing BHP Method Acoustic
 Producing BHP Date 08/13/2024
 Formation Depth 5275.00 ft

Production

Oil Production - * - BBL/D
 Water Production - * - BBL/D
 Gas Production - * - Mscf/D
 Production Date - * -

Temperatures

Surface Temperature 70 deg F
 Bottomhole Temperature 150 deg F

Surface Producing Pressures

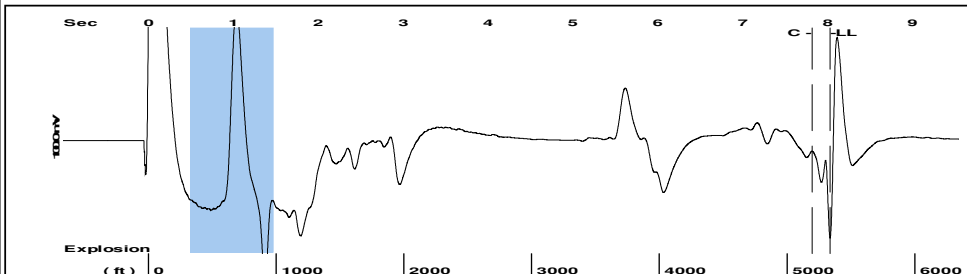
Tubing Pressure - * - psi (g)
 Casing Pressure 326.2 psi (g)

Fluid Properties

Oil API 40 deg API
 Water Specific Gravity 1.05 Sp.Gr.H2O

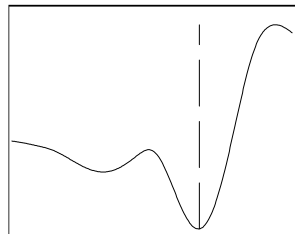
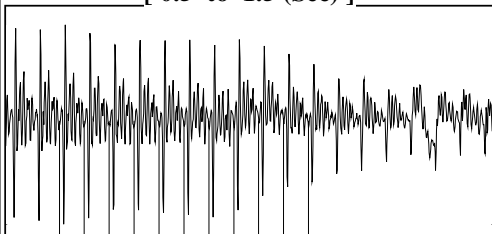
Casing Pressure Buildup

Change in Pressure 0.094 psi
 Over Change in Time 1.00 min

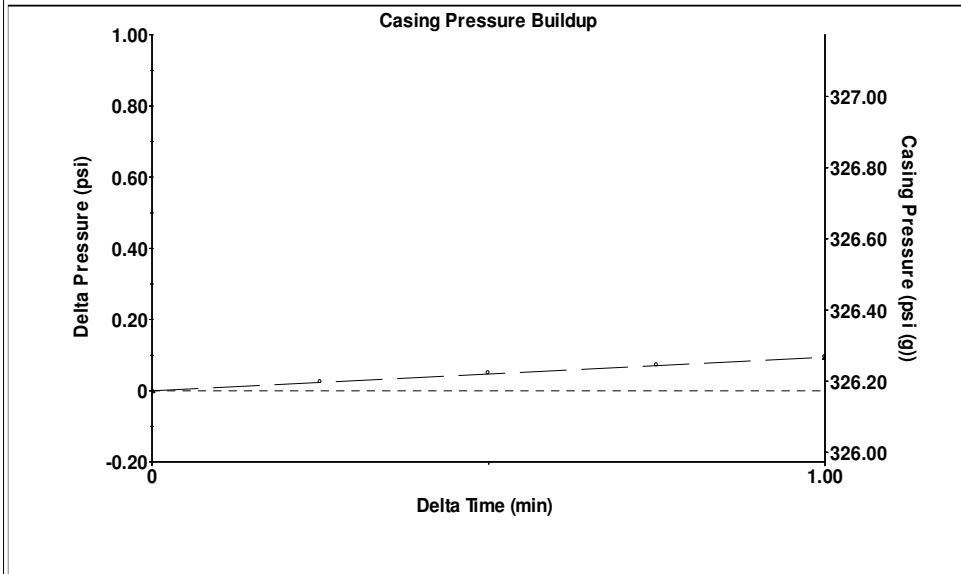


Filter Type High Pass Automatic Collar Count Yes Time 8.033 sec
 Manual Acoustic Veloc 1295.94 ft/s Manual JTS/sec 19.5312 Joints 160.873 Jts
 Depth 5337.13 ft

[0.5 to 1.5 (Sec)]

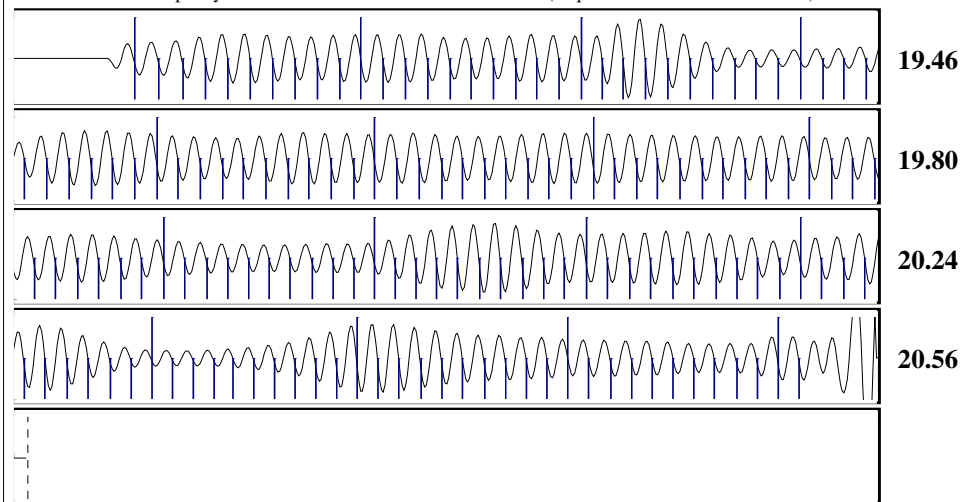


Analysis Method: Automatic



Change in Pressure 0.09 psi PT 15571
 Change in Time 1.00 min Range 0 - ? psi

Production	Potential	Casing Pressure		Static
Current		326.2 psi (g)		Oil Column Height
Oil - * -	- * - BBL/D	Casing Pressure Buildup		MD 0 ft
Water - * -	- * - BBL/D	0.094 psi		TVD 0 ft
Gas - * -	- * - Mscf/D	1.00 min		Water Column Height
IPR Method	Vogel	Gas/Liquid Interface Pressure		MD - * - ft
PBHP/SBHP	- * -	365.2 psi (g)		TVD - * - ft
Production Efficiency	0.0	Liquid Level Depth		Static BHP
Oil 40 deg.API		5337.13 ft		365.2 psi (g)
Water 1.05 Sp.Gr.H2O		Main Depth to Liq Level TVD		
Gas 0.65 Sp.Gr.AIR		4766.13 ft		
Acoustic Velocity	1328.8 ft/s	Pump Intake Depth		
		5275.00 ft		
		Formation Depth		
		5275.00 ft		
		Formation Depth TVD		
		4763.10 ft		



Acoustic Velocity 1328.8 ft/s Joints counted 151
 Joints Per Second 20.0265 jts/sec Joints to liquid level 160.873
 Depth to liquid level 5337.13 ft Filter Width 17.5312 21.5312
 Automatic Collar Count Yes Time to 1st Collar 0.28 7.82

Conservation Division
District Office No. 2
3450 N. Rock Road
Building 600, Suite 601
Wichita, KS 67226



Phone: 316-337-7400
<http://kcc.ks.gov/>

Andrew J. French, Chairperson
Dwight D. Keen, Commissioner
Annie Kuether, Commissioner

Laura Kelly, Governor

09/09/2024

Leah Medrana
SandRidge Exploration and Production LLC
1 E SHERIDAN AVE STE 500
OKLAHOMA CITY, OK 73104-2494

Re: Temporary Abandonment
API 15-077-21977-01-00
RED FERN 3507 2-16H
NE/4 Sec.09-35S-07W
Harper County, Kansas

Dear Leah Medrana:

"Your temporary abandonment (TA) application for the well listed above has been approved. In accordance with K.A.R. 82-3-111 the TA status of this well will expire 09/09/2025.

- * If you return this well to service or plug it, please notify the District Office.
- * If you sell this well you are required to file a Transfer of Operator form, T-1.
- * If the well will remain temporarily abandoned, you must submit a new TA application, CP-111, before 09/09/2025.

You may contact me at the number above if you have questions.

Very truly yours,

Neil Lake, ECRS"