

KANSAS CORPORATION COMMISSION
OIL & GAS CONSERVATION DIVISION

TEMPORARY ABANDONMENT WELL APPLICATION

All blanks must be complete

OPERATOR: License# _____
Name: _____
Address 1: _____
Address 2: _____
City: _____ State: _____ Zip: _____ + _____
Contact Person: _____
Phone:(_____) _____
Contact Person Email: _____
Field Contact Person: _____
Field Contact Person Phone: (_____) _____

API No. 15- _____
Spot Description: _____
____ - ____ - ____ - ____ Sec. _____ Twp. _____ S. R. _____ E W
_____ feet from N / S Line of Section
_____ feet from E / W Line of Section
GPS Location: Lat: _____, Long: _____
(e.g. xx.xxxxx) (e.g. -xxx.xxxxx)
Datum: NAD27 NAD83 WGS84
County: _____ Elevation: _____ GL KB
Lease Name: _____ Well #: _____
Well Type: (check one) Oil Gas OG WSW Other: _____
 SWD Permit #: _____ ENHR Permit #: _____
 Gas Storage Permit #: _____
Spud Date: _____ Date Shut-In: _____

	Conductor	Surface	Production	Intermediate	Liner	Tubing
Size						
Setting Depth						
Amount of Cement						
Top of Cement						
Bottom of Cement						

Casing Fluid Level from Surface: _____ How Determined? _____ Date: _____
Casing Squeeze(s): _____ to _____ w / _____ sacks of cement, _____ to _____ w / _____ sacks of cement. Date: _____
(top) (bottom) (top) (bottom)
Do you have a valid Oil & Gas Lease? Yes No
Depth and Type: Junk in Hole at _____ (depth) Tools in Hole at _____ (depth) Casing Leaks: Yes No Depth of casing leak(s): _____
Type Completion: ALT. I ALT. II Depth of: DV Tool: _____ w / _____ sacks of cement Port Collar: _____ w / _____ sack of cement
(depth) (depth)
Packer Type: _____ Size: _____ Inch Set at: _____ Feet
Total Depth: _____ Plug Back Depth: _____ Plug Back Method: _____

Geological Data:

Formation Name	Formation Top	Formation Base	Completion Information
1. _____	At: _____	to _____ Feet	Perforation Interval _____ to _____ Feet or Open Hole Interval _____ to _____ Feet
2. _____	At: _____	to _____ Feet	Perforation Interval _____ to _____ Feet or Open Hole Interval _____ to _____ Feet

UNDER PENALTY OF PERJURY I HEREBY ATTEST THAT THE INFORMATION CONTAINED HEREIN IS TRUE AND CORRECT TO THE BEST OF MY KNOWLEDGE

Submitted Electronically

Do NOT Write in This Space - KCC USE ONLY	Date Tested: _____	Results: _____	Date Plugged: _____	Date Repaired: _____	Date Put Back in Service: _____
	Review Completed by: _____ Comments: _____				
TA Approved: <input type="checkbox"/> Yes <input type="checkbox"/> Denied Date: _____					

Mail to the Appropriate KCC Conservation Office:

	KCC District Office #1 - 210 E. Frontview, Suite A, Dodge City, KS 67801	Phone 620.682.7933
	KCC District Office #2 - 3450 N. Rock Road, Building 600, Suite 601, Wichita, KS 67226	Phone 316.337.7400
	KCC District Office #3 - 137 E. 21st St., Chanute, KS 66720	Phone 620.902.6450
	KCC District Office #4 - 2301 E. 13th Street, Hays, KS 67601-2651	Phone 785.261.6250

General

Well ID Red Fern 3507 3-16H FL
 Well Red Fern 3507 3-16H FL
 Company SD
 Operator Andrew Smith
 Lease Name Red Fern 3507 3-16H FL
 Elevation 0.00 ft
 Production Method Electrical Submersible Pump

Comment

Tubulars

Tubing OD 2.875 in
 Average Joint Length 33.161 ft
 Sliding Sleeve - * - ft
 Casing OD 7.000 in
 Liner OD - * - in
 Top of Liner - * - ft
 PBTD - * - ft
 Kelly Bushing 19.60 ft

Pump Assembly

Installation Date - * -
 Pump Intake Depth 5770.00 ft
 PIP Gage - * - ft

Gas Separator

Gas Separator Not Used
 Tubing Discharge Temp - * - deg F

Pump Configuration

	Top Pump	Pump 2	Pump 3	Pump 4	Pump 5
Pump Manufacturer	- * -	- * -	- * -	- * -	- * -
Pump Description/Series	- * -	- * -	- * -	- * -	- * -
Serial Number	- * -	- * -	- * -	- * -	- * -
Stage Count	0	0	0	0	0
Pump Housing	- * -	- * -	- * -	- * -	- * -

Total Length of Pump Assembly - * - ft
 Shroud is Not Used

Electric Equipment

Control Panel - * -
 Variable Frequency is Not Used
 Overload Set Point - * -
 Underload Set Point - * -
 Overvoltage Set Point - * -
 Undervoltage Set Point - * -
 Frequency - * -
 Pump Up Time - * -

Cable Data

Round Cable Type - * -
 Round Cable Length - * - ft
 Flat Cable Type - * -
 Flat Cable Length - * - ft

Electrical Cost

Cost Per kW-Hour - * -
 Cost Per kW - * -

Motor Assembly Description

	Top Motor	Motor 2	Motor 3	Motor 4
Manufacturer	- * -	- * -	- * -	- * -
Series	- * -	- * -	- * -	- * -
Type	- * -	- * -	- * -	- * -
HP	- * -	- * -	- * -	- * -
Volts/Amps	- * -	- * -	- * -	- * -
Total Length of Motor Assembly	- * - ft		Installation Date	- * -

Electrical Parameters

AMPS		VOLTS	
A Input	- * -	BA Input	- * -
B Input	- * -	CB Input	- * -
C Input	- * -	AC Input	- * -
		A-gnd	- * -
		B-gnd	- * -
		C-gnd	- * -
Kilowatt	- * -	Power Factor	- * -
		Date and Time of Measurement	- * -

Conditions

Pressure

Static BHP 471.6 psi (g)
 Static BHP Method Acoustic
 Static BHP Date 08/13/2024
 Producing BHP 471.9 psi (g)
 Producing BHP Method Acoustic
 Producing BHP Date 08/13/2024
 Formation Depth 5770.00 ft

Production

Oil Production - * - BBL/D
 Water Production - * - BBL/D
 Gas Production - * - Mscf/D
 Production Date - * -

Temperatures

Surface Temperature 70 deg F
 Bottomhole Temperature 150 deg F

Surface Producing Pressures

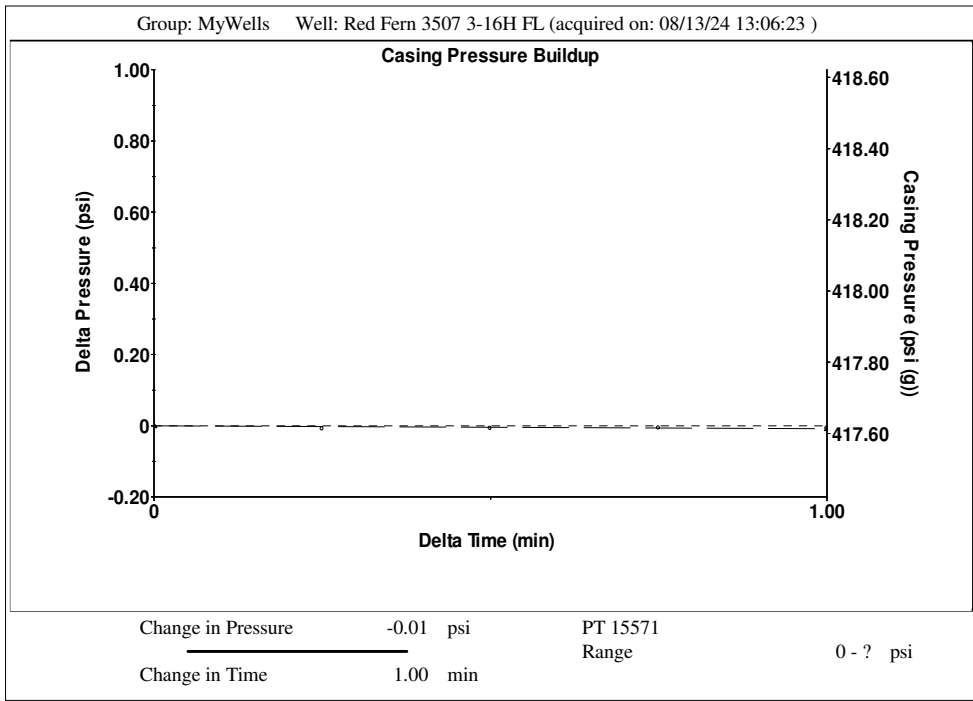
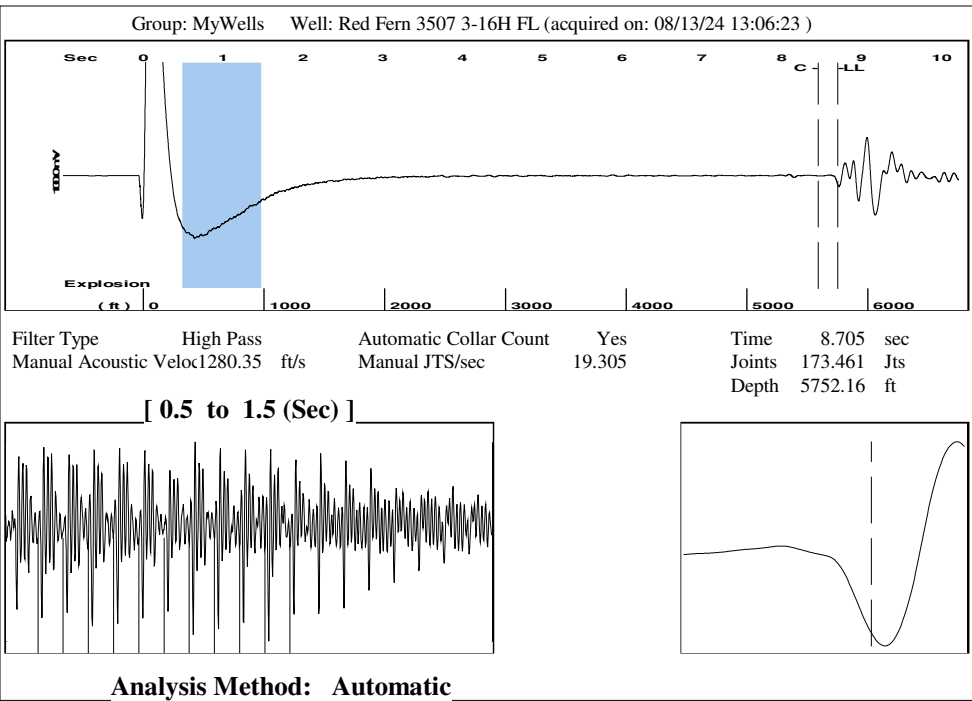
Tubing Pressure - * - psi (g)
 Casing Pressure 417.6 psi (g)

Fluid Properties

Oil API 40 deg API
 Water Specific Gravity 1.05 Sp.Gr.H2O

Casing Pressure Buildup

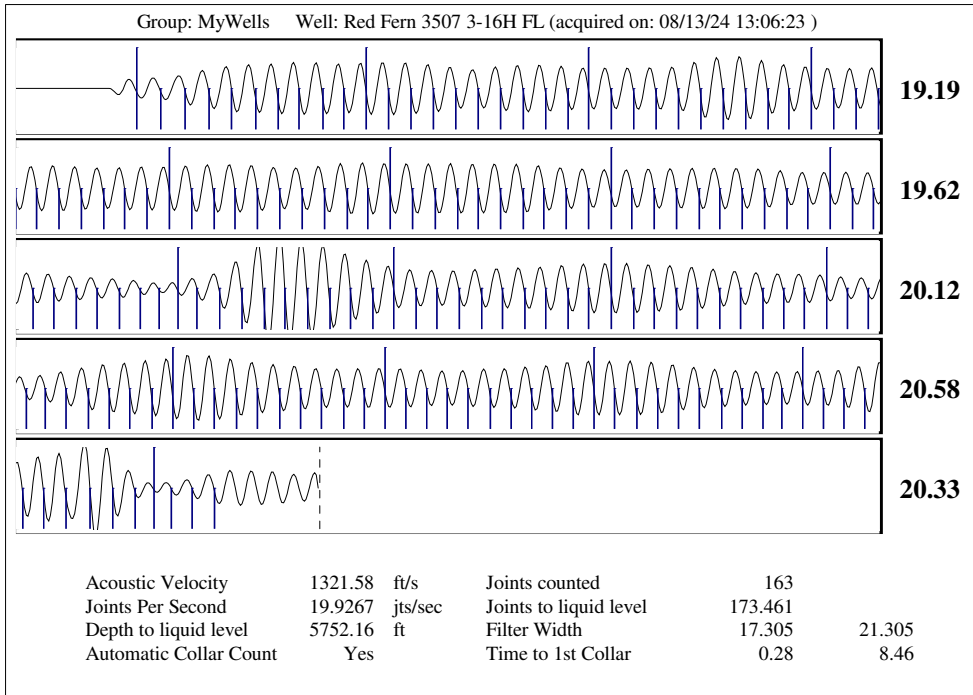
Change in Pressure -0.008 psi
 Over Change in Time 1.00 min



Group: MyWells Well: Red Fern 3507 3-16H FL (acquired on: 08/13/24 13:06:23)

Production		Potential		Casing Pressure			Static	
Oil	- * -	- * -	BBL/D	417.6	psi (g)		Oil Column Height	
Water	- * -	- * -	BBL/D	Casing Pressure Buildup			MD	0 ft
Gas	- * -	- * -	Mscf/D	-0.008	psi		TVD	0 ft
IPR Method		Vogel		1.00	min		Water Column Height	
PBHP/SBHP	- * -			Gas/Liquid Interface Pressure			MD	- * - ft
Production Efficiency	0.0			471.6	psi (g)		TVD	- * - ft
Oil	40 deg.API			Liquid Level Depth			Static BHP	
Water	1.05 Sp.Gr.H2O			5752.16	ft		471.6	psi (g)
Gas	0.65 Sp.Gr.AIR			Main Depth to Liq Level TVD				
Acoustic Velocity		1321.58 ft/s		5106.48	ft			
				Pump Intake Depth				
				5770.00	ft			
				Formation Depth				
				5770.00	ft			
				Formation Depth TVD				
				5107.40	ft			

Acoustic Test



Conservation Division
District Office No. 2
3450 N. Rock Road
Building 600, Suite 601
Wichita, KS 67226



Phone: 316-337-7400
<http://kcc.ks.gov/>

Andrew J. French, Chairperson
Dwight D. Keen, Commissioner
Annie Kuether, Commissioner

Laura Kelly, Governor

09/09/2024

Leah Medrana
SandRidge Exploration and Production LLC
1 E SHERIDAN AVE STE 500
OKLAHOMA CITY, OK 73104-2494

Re: Temporary Abandonment
API 15-077-21978-01-00
RED FERN 3507 3-16H
NE/4 Sec.09-35S-07W
Harper County, Kansas

Dear Leah Medrana:

"Your temporary abandonment (TA) application for the well listed above has been approved. In accordance with K.A.R. 82-3-111 the TA status of this well will expire 09/09/2025.

- * If you return this well to service or plug it, please notify the District Office.
- * If you sell this well you are required to file a Transfer of Operator form, T-1.
- * If the well will remain temporarily abandoned, you must submit a new TA application, CP-111, before 09/09/2025.

You may contact me at the number above if you have questions.

Very truly yours,

Neil Lake, ECRS"