

KANSAS CORPORATION COMMISSION
OIL & GAS CONSERVATION DIVISION

TEMPORARY ABANDONMENT WELL APPLICATION

OPERATOR: License#
Name:
Address 1:
Address 2:
City: State: Zip:
Contact Person:
Phone:
Contact Person Email:
Field Contact Person:
Field Contact Person Phone:

API No. 15-
Spot Description:
Sec. Twp. S. R.
GPS Location: Lat, Long
Datum: NAD27, NAD83, WGS84
County: Elevation:
Lease Name: Well #:
Well Type: Oil, Gas, OG, WSW, Other
SWD Permit #: ENHR Permit #:
Gas Storage Permit #:
Spud Date: Date Shut-In:

Table with 7 columns: Conductor, Surface, Production, Intermediate, Liner, Tubing. Rows include Size, Setting Depth, Amount of Cement, Top of Cement, Bottom of Cement.

Casing Fluid Level from Surface: How Determined? Date:
Casing Squeeze(s): to w / sacks of cement, to w / sacks of cement. Date:
Do you have a valid Oil & Gas Lease? Yes No
Depth and Type: Junk in Hole at Tools in Hole at Casing Leaks: Yes No Depth of casing leak(s):
Type Completion: ALT. I ALT. II Depth of: DV Tool: w / sacks of cement Port Collar: w / sack of cement
Packer Type: Size: Inch Set at: Feet
Total Depth: Plug Back Depth: Plug Back Method:

Geological Date:

Table with 4 columns: Formation Name, Formation Top, Formation Base, Completion Information. Rows 1 and 2.

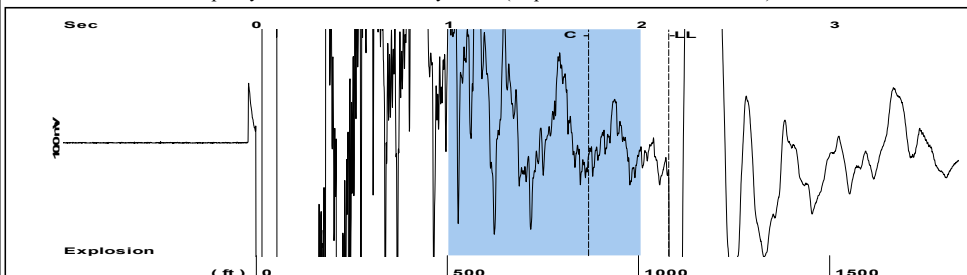
UNDER PENALTY OF PERJURY I HEREBY ATTEST THAT THE INFORMATION CONTAINED HEREIN IS TRUE AND CORRECT TO THE BEST OF MY KNOWLEDGE

Submitted Electronically

Form with fields: Do NOT Write in This Space - KCC USE ONLY, Date Tested, Results, Date Plugged, Date Repaired, Date Put Back in Service, Review Completed by, Comments, TA Approved: Yes Denied, Date.

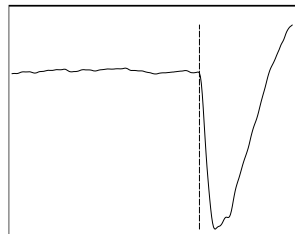
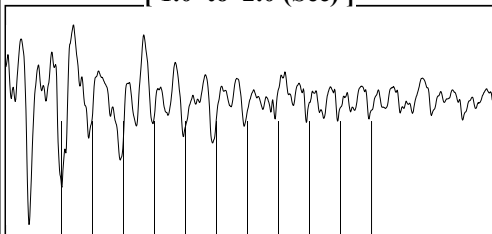
Mail to the Appropriate KCC Conservation Office:

Table with 3 columns: District Office #, Address, Phone. Rows 1-4.

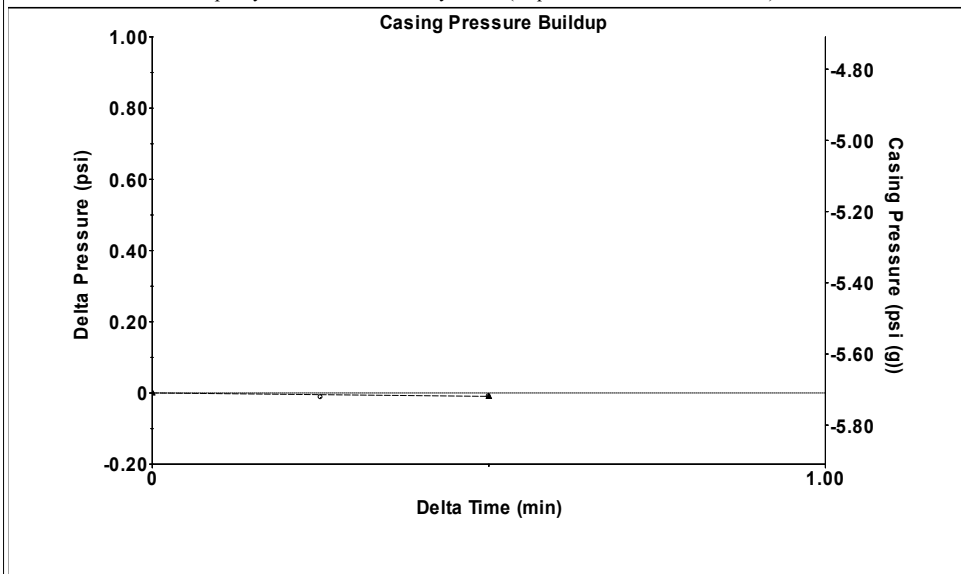


Filter Type High Pass Automatic Collar Count Yes Time 2.14 sec
 Manual Acoustic Veloc 988.069 ft/s Manual JTS/sec 15.6986 Joints 34.2758 Jts
 Depth 1078.66 ft

[1.0 to 2.0 (Sec)]

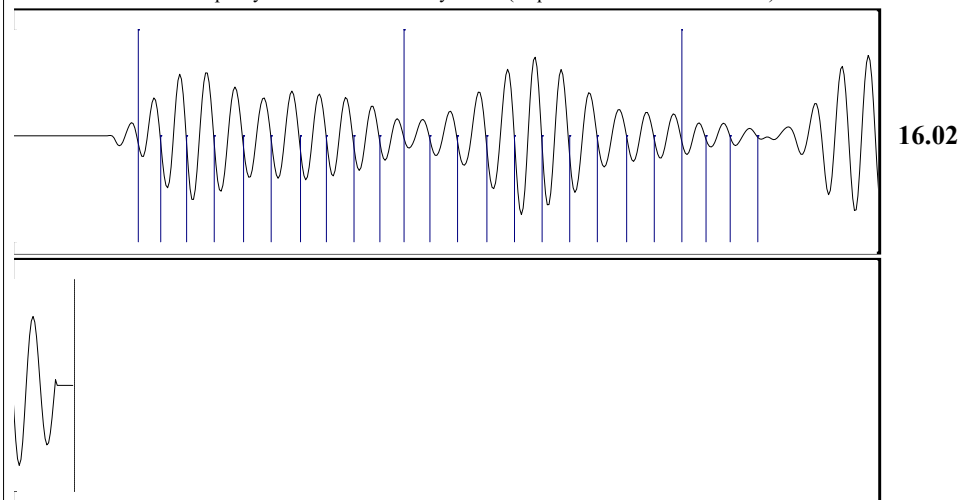


Analysis Method: Automatic



Change in Pressure -0.01 psi PT 12349
 Change in Time 0.50 min Range 0 - ? psi

Production	Potential	Casing Pressure		Producing	
Current		-5.7 psi (g)		Annular Gas Flow	
Oil 0.5	- * - BBL/D	Casing Pressure Buildup		0 Mscf/D	
Water 90	- * - BBL/D	-0.010 psi		% Liquid	100 %
Gas - * -	- * - Mscf/D	0.50 min			
IPR Method	Vogel	Gas/Liquid Interface Pressure			
PBHP/SBHP	- * -	-5.4 psi (g)			
Production Efficiency	0.0	Liquid Level Depth			
Oil 36 deg.API		1078.66 ft			
Water 1.05 Sp.Gr.H2O		Pump Intake Depth			
Gas 0.95 Sp.Gr.AIR		2140.00 ft			
Acoustic Velocity	1008.09 ft/s	Formation Depth			
		2170.00 ft			
Formation Submergence			Pump Intake	370.7 psi (g)	
Total Gaseous Liquid Column HT (TVD)		1061 ft	Producing BHP	384.3 psi (g)	
Equivalent Gas Free Liquid HT (TVD)		1061 ft	Static BHP	- * - psi (g)	
Acoustic Test					



Acoustic Velocity 1008.09 ft/s Joints counted 23
 Joints Per Second 16.0167 jts/sec Joints to liquid level 34.2758
 Depth to liquid level 1078.66 ft Filter Width 13.6986 17.6986
 Automatic Collar Count Yes Time to 1st Collar 0.288 1.724

Conservation Division
District Office No. 2
3450 N. Rock Road
Building 600, Suite 601
Wichita, KS 67226



Phone: 316-337-7400
<http://kcc.ks.gov/>

Andrew J. French, Chairperson
Dwight D. Keen, Commissioner
Annie Kuether, Commissioner

Laura Kelly, Governor

09/10/2024

Shane Summers
Vess Oil Corporation
1700 N WATERFRONT PKWY BLDG 500
WICHITA, KS 67206-6619

Re: Temporary Abandonment
API 15-015-23486-00-00
CHESNEY A 235
NE/4 Sec.21-25S-05E
Butler County, Kansas

Dear Shane Summers:

"Your temporary abandonment (TA) application for the well listed above has been approved. In accordance with K.A.R. 82-3-111 the TA status of this well will expire 09/10/2025.

- * If you return this well to service or plug it, please notify the District Office.
- * If you sell this well you are required to file a Transfer of Operator form, T-1.
- * If the well will remain temporarily abandoned, you must submit a new TA application, CP-111, before 09/10/2025.

You may contact me at the number above if you have questions.

Very truly yours,

NEAL RUPP ECRS"