

KANSAS CORPORATION COMMISSION
OIL & GAS CONSERVATION DIVISION

TEMPORARY ABANDONMENT WELL APPLICATION

OPERATOR: License#
Name:
Address 1:
Address 2:
City: State: Zip:
Contact Person:
Phone:
Contact Person Email:
Field Contact Person:
Field Contact Person Phone:

API No. 15-
Spot Description:
Sec. Twp. S. R.
GPS Location: Lat: Long:
Datum: NAD27 NAD83 WGS84
County: Elevation:
Lease Name: Well #:
Well Type: Oil Gas OG WSW Other:
SWD Permit #: ENHR Permit #:
Gas Storage Permit #:
Spud Date: Date Shut-In:

Table with 7 columns: Conductor, Surface, Production, Intermediate, Liner, Tubing. Rows include Size, Setting Depth, Amount of Cement, Top of Cement, Bottom of Cement.

Casing Fluid Level from Surface: How Determined? Date:
Casing Squeeze(s): to w / sacks of cement, to w / sacks of cement. Date:
Do you have a valid Oil & Gas Lease? Yes No
Depth and Type: Junk in Hole at Tools in Hole at Casing Leaks: Yes No Depth of casing leak(s):
Type Completion: ALT. I ALT. II Depth of: DV Tool: w / sacks of cement Port Collar: w / sack of cement
Packer Type: Size: Inch Set at: Feet
Total Depth: Plug Back Depth: Plug Back Method:

Geological Data:

Table with 4 columns: Formation Name, Formation Top, Formation Base, Completion Information. Rows 1 and 2.

UNDER PENALTY OF PERJURY I HEREBY ATTEST THAT THE INFORMATION CONTAINED HEREIN IS TRUE AND CORRECT TO THE BEST OF MY KNOWLEDGE

Submitted Electronically

Do NOT Write in This Space - KCC USE ONLY
Date Tested: Results: Date Plugged: Date Repaired: Date Put Back in Service:
Review Completed by: Comments:
TA Approved: Yes Denied Date:

Mail to the Appropriate KCC Conservation Office:

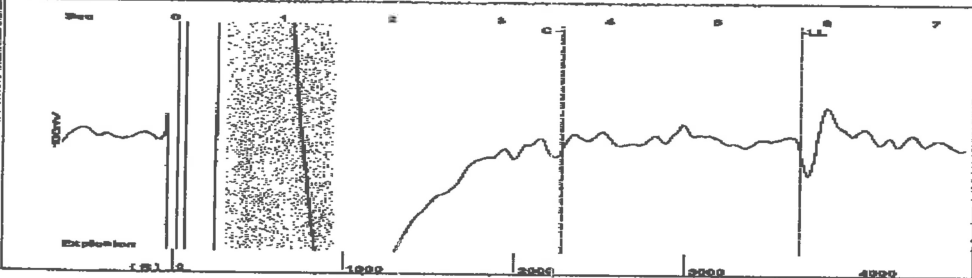
Table with 3 columns: District Office #, Address, Phone. Rows 1-4.

010

02/22/2021 21:34 FAX 16205842062

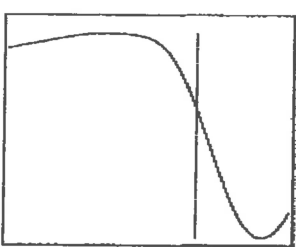
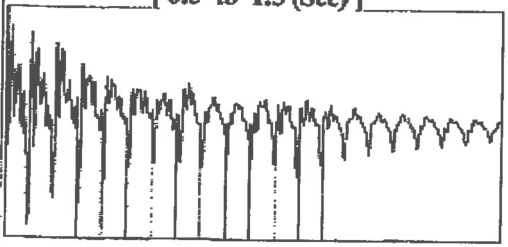
02/22/2021 21:34 FAX 16205842062

Group: Sawyer Well: DAVIS X #2-15 (acquired on: 09/09/24 10:06:22)



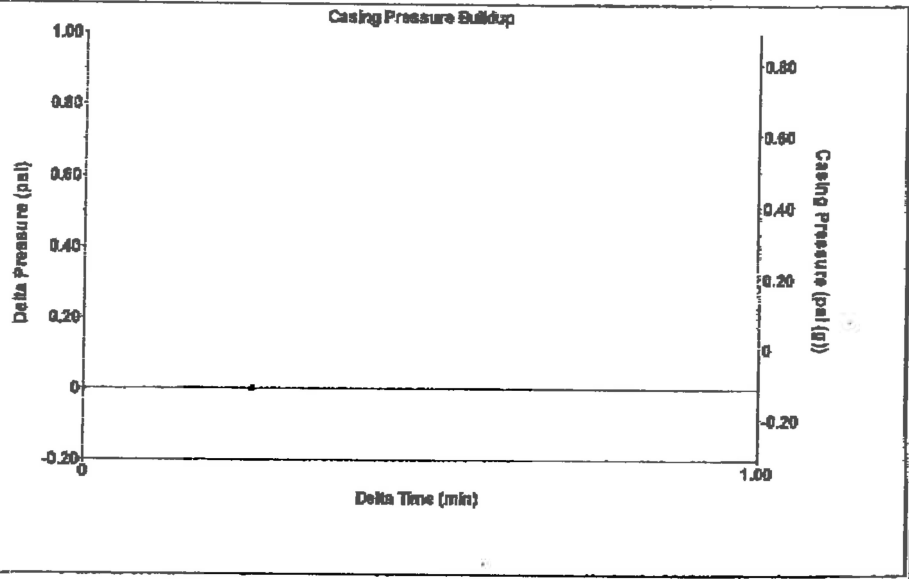
Filter Type High Pass Automatic Collar Count Yes Time 5.772 sec
 Manual Acoustic Veloc 1251.6 ft/s Manual JTS/sec 20 Joints 117.331 Jts
 Depth 3671.30 ft

[0.5 to 1.5 (Sec)]




Analysis Method: Automatic

Group: Sawyer Well: DAVIS X #2-15 (acquired on: 09/09/24 10:06:22)

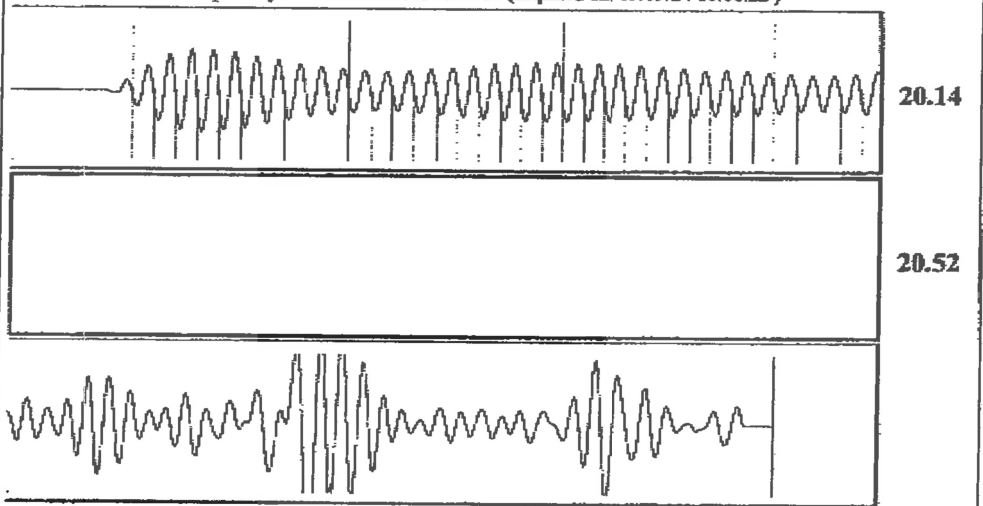


Change in Pressure 0.00 psi PT:134-40
 Change in Time 0.25 min Range 0 - ? psi

Group: Sawyer Well: DAVIS X #2-15 (acquired on: 09/09/24 10:06:22)

Production			Producing	
Current	Potential		Casing Pressure	-0.1 psi (g)
Oil -*	-* BBL/D		Casing Pressure Buildup	0.0 psi
Water -*	-* BBL/D		Gas/Liquid Interface Pressure	1.3 psi (g)
Gas -*	-* Mscf/D		Liquid Level Depth	3671.30 ft
IPR Method	Vogel		Pump Intake Depth	4537.00 ft
PBHP/SBHP	-*		Formation Depth	4569.00 ft
Production Efficiency	0.0		Pump Intake	293.1 psi (g)
Oil 40 deg.API			Producing BHP	307.7 psi (g)
Water 1.05 Sp.Gr.H2O			Static BHP	-* psi (g)
Gas 0.73 Sp.Gr.AIR				
Acoustic Velocity	1272.11 ft/s			
Formation Submergence				
Total Gaseous Liquid Column HT (TVD)	866 ft			
Equivalent Gas Free Liquid HF (TVD)	866 ft			
Acoustic Test				

Group: Sawyer Well: DAVIS X #2-15 (acquired on: 09/09/24 10:06:22)



Acoustic Velocity 1272.11 ft/s Joints counted 67
 Joints Per Second 20.3277 jts/sec Joints to liquid level 117.331
 Depth to liquid level 3671.3 ft Filter Width 18 22
 Automatic Collar Count Yes Time to 1st Collar 0.276 3.572

Conservation Division
District Office No. 1
210 E. Frontview, Suite A
Dodge City, KS 67801



Phone: 620-682-7933
<http://kcc.ks.gov/>

Andrew J. French, Chairperson
Dwight D. Keen, Commissioner
Annie Kuether, Commissioner

Laura Kelly, Governor

09/12/2024

Loveness Mpanje
F. G. Holl Company L.L.C.
9431 E CENTRAL STE 100
WICHITA, KS 67206-2563

Re: Temporary Abandonment
API 15-007-22691-00-02
DAVIS X OWWO 2-15
NW/4 Sec.15-30S-13W
Barber County, Kansas

Dear Loveness Mpanje:

"Your temporary abandonment (TA) application for the well listed above has been approved. In accordance with K.A.R. 82-3-111 the TA status of this well will expire 09/12/2025.

- * If you return this well to service or plug it, please notify the District Office.
- * If you sell this well you are required to file a Transfer of Operator form, T-1.
- * If the well will remain temporarily abandoned, you must submit a new TA application, CP-111, before 09/12/2025.

You may contact me at the number above if you have questions.

Very truly yours,

Michael Maier"