

KANSAS CORPORATION COMMISSION
OIL & GAS CONSERVATION DIVISION

TEMPORARY ABANDONMENT WELL APPLICATION

OPERATOR: License#
Name:
Address 1:
Address 2:
City: State: Zip:
Contact Person:
Phone:
Contact Person Email:
Field Contact Person:
Field Contact Person Phone:

API No. 15-
Spot Description:
Sec. Twp. S. R.
GPS Location: Lat: Long:
Datum: NAD27 NAD83 WGS84
County: Elevation:
Lease Name: Well #:
Well Type: Oil Gas OG WSW Other:
SWD Permit #: ENHR Permit #:
Gas Storage Permit #:
Spud Date: Date Shut-In:

Table with 7 columns: Conductor, Surface, Production, Intermediate, Liner, Tubing. Rows include Size, Setting Depth, Amount of Cement, Top of Cement, Bottom of Cement.

Casing Fluid Level from Surface: How Determined? Date:
Casing Squeeze(s): to w / sacks of cement, to w / sacks of cement. Date:
Do you have a valid Oil & Gas Lease? Yes No
Depth and Type: Junk in Hole at Tools in Hole at Casing Leaks: Yes No Depth of casing leak(s):
Type Completion: ALT. I ALT. II Depth of: DV Tool: w / sacks of cement Port Collar: w / sack of cement
Packer Type: Size: Inch Set at: Feet
Total Depth: Plug Back Depth: Plug Back Method:

Geological Date:

Table with 4 columns: Formation Name, Formation Top, Formation Base, Completion Information. Rows 1 and 2.

UNDER PENALTY OF PERJURY I HEREBY ATTEST THAT THE INFORMATION CONTAINED HEREIN IS TRUE AND CORRECT TO THE BEST OF MY KNOWLEDGE

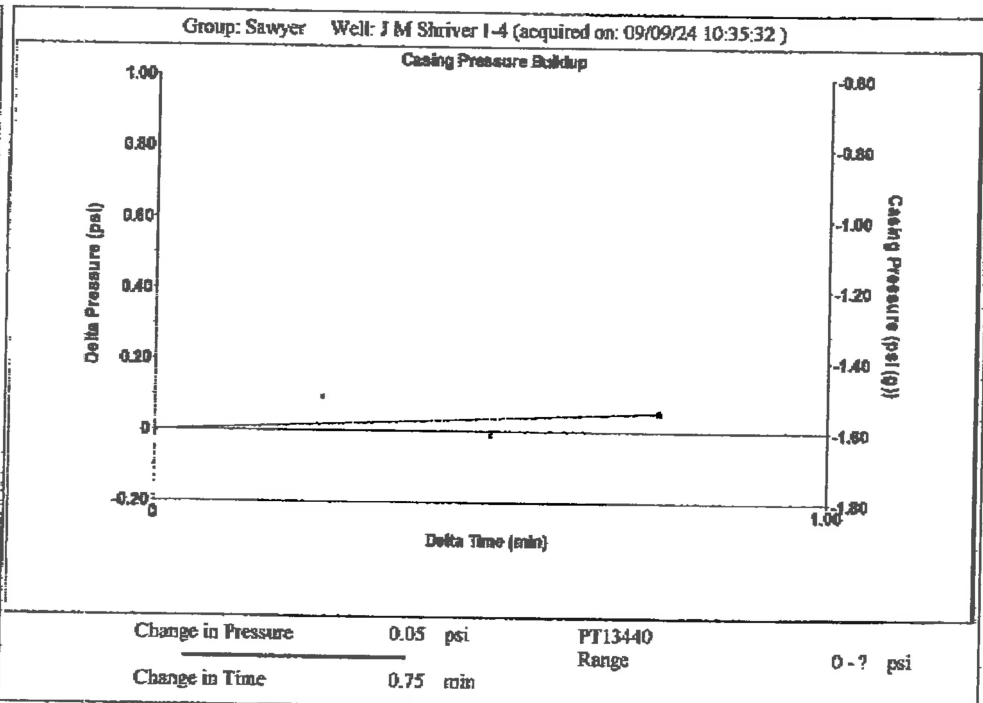
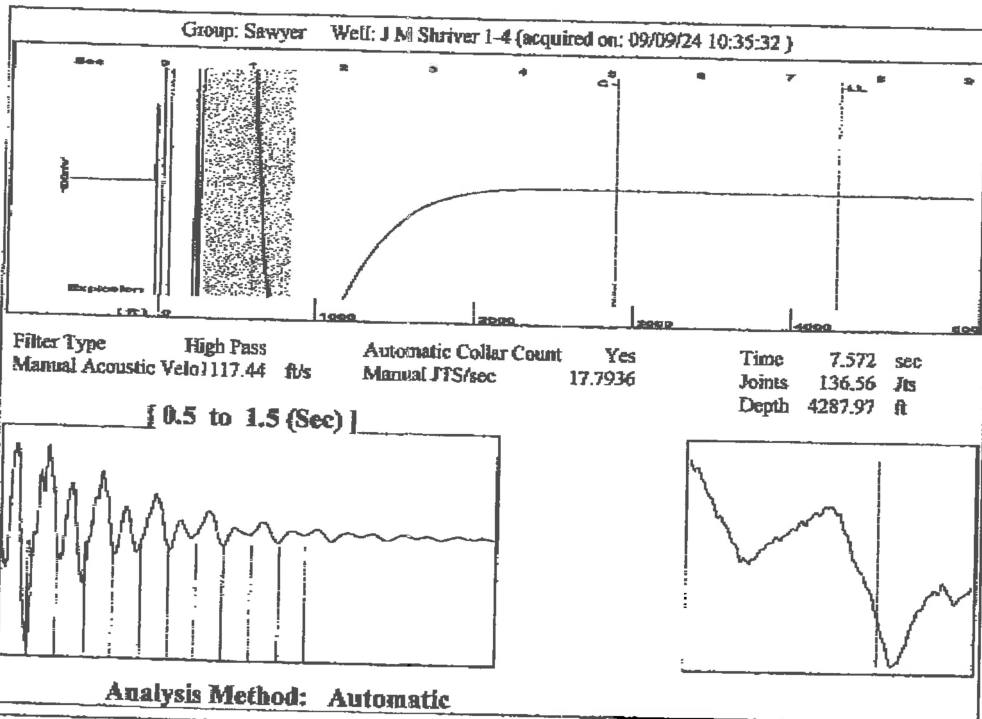
Submitted Electronically

Do NOT Write in This Space - KCC USE ONLY
Date Tested: Results: Date Plugged: Date Repaired: Date Put Back in Service:
Review Completed by: Comments:
TA Approved: Yes Denied Date:

Mail to the Appropriate KCC Conservation Office:

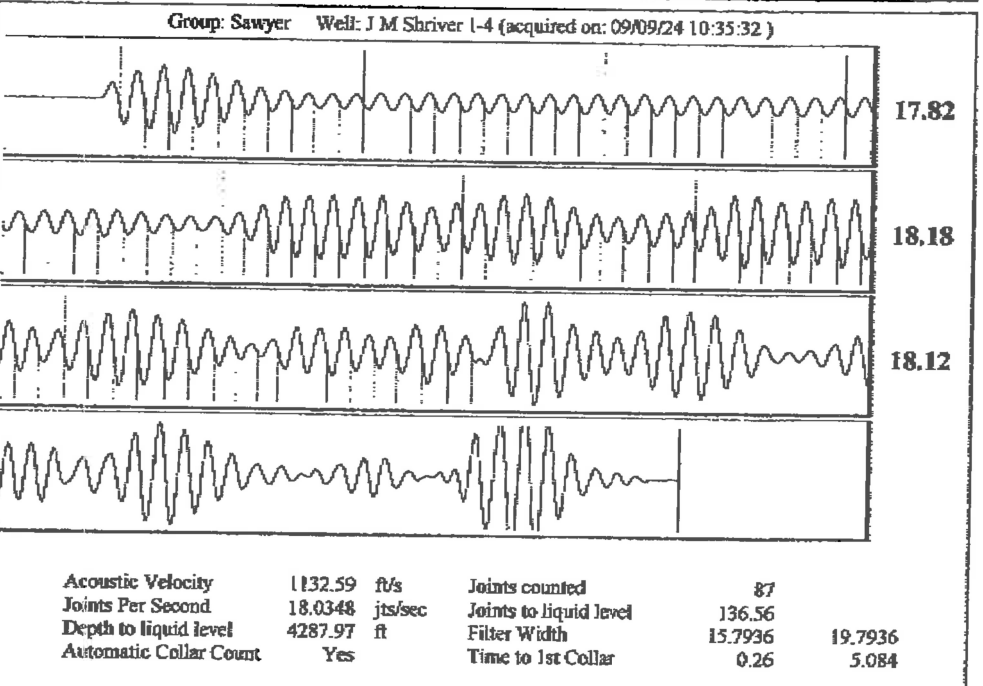
Map of Kansas with 4 numbered districts. Table with 3 columns: District Office Name, Address, Phone Number.

009
 ellinwood
 06/24/2021 21:34 FAX 16205642082



Group: Sawyer Well: J M Shriver 1-4 (acquired on: 09/09/24 10:35:32)

Production Current	Potential	Casing Pressure	-1.6 psi (g)	Producing
Oil -*-	-* BBL/D	Casing Pressure Buildup	0.1 psi	Annular Gas Flow
Water -*-	-* BBL/D	0.75 min	0.1 psi (g)	2 Mscf/D
Gas -*-	-* Mscf/D	Gas/Liquid Interface Pressure	0.1 psi (g)	% Liquid
				88 %
IPR Method	Vogel	Liquid Level Depth	4287.97 ft	Pump Intake
PBHP/SBHP	-*-	Pump Intake Depth	4617.00 ft	101.4 psi (g)
Production Efficiency	0.0	Formation Depth	4552.00 ft	Producing BHP
				79.3 psi (g)
Oil 40 deg API				Static BHP
Water 1.05 Sp.Gr.H2O				-*- psi (g)
Gas 0.86 Sp.Gr.AIR				
Acoustic Velocity	1132.59 ft/s			
Formation Submergence				
Total Gaseous Liquid Column HT (TVD)	329 ft			
Equivalent Gas Free Liquid HT (TVD)	297 ft			
Acoustic Test				



Conservation Division
District Office No. 1
210 E. Frontview, Suite A
Dodge City, KS 67801



Phone: 620-682-7933
<http://kcc.ks.gov/>

Andrew J. French, Chairperson
Dwight D. Keen, Commissioner
Annie Kuether, Commissioner

Laura Kelly, Governor

09/12/2024

Loveness Mpanje
F. G. Holl Company L.L.C.
9431 E CENTRAL STE 100
WICHITA, KS 67206-2563

Re: Temporary Abandonment
API 15-007-22728-00-02
SHRIVER J M OWWO 1-4
SE/4 Sec.04-30S-14W
Barber County, Kansas

Dear Loveness Mpanje:

Your application for Temporary Abandonment (TA) for the above-listed well is denied for the following reasons(s):

Shut-in Over 10 years

Pursuant to K.A.R. 82-3-111, the well must be plugged, or returned to service, or obtain temporary abandonment status by 10/12/2024.

This deadline does NOT override any compliance deadline given to you in any Commission Order.

You may contact me if you have any questions.

Sincerely,
Michael Maier
KCC DISTRICT 1