

KANSAS CORPORATION COMMISSION
OIL & GAS CONSERVATION DIVISION

TEMPORARY ABANDONMENT WELL APPLICATION

OPERATOR: License#
Name:
Address 1:
Address 2:
City: State: Zip:
Contact Person:
Phone:
Contact Person Email:
Field Contact Person:
Field Contact Person Phone:

API No. 15-
Spot Description:
Sec. Twp. S. R.
GPS Location: Lat: Long:
Datum: NAD27 NAD83 WGS84
County: Elevation:
Lease Name: Well #:
Well Type: Oil Gas OG WSW Other:
SWD Permit #: ENHR Permit #:
Gas Storage Permit #:
Spud Date: Date Shut-In:

Table with 7 columns: Conductor, Surface, Production, Intermediate, Liner, Tubing. Rows include Size, Setting Depth, Amount of Cement, Top of Cement, Bottom of Cement.

Casing Fluid Level from Surface: How Determined? Date:
Casing Squeeze(s): to w / sacks of cement, to w / sacks of cement. Date:
Do you have a valid Oil & Gas Lease? Yes No
Depth and Type: Junk in Hole at Tools in Hole at Casing Leaks: Yes No Depth of casing leak(s):
Type Completion: ALT. I ALT. II Depth of: DV Tool: w / sacks of cement Port Collar: w / sack of cement
Packer Type: Size: Inch Set at: Feet
Total Depth: Plug Back Depth: Plug Back Method:

Geological Data:

Table with 4 columns: Formation Name, Formation Top, Formation Base, Completion Information. Rows 1 and 2.

UNDER PENALTY OF PERJURY I HEREBY ATTEST THAT THE INFORMATION CONTAINED HEREIN IS TRUE AND CORRECT TO THE BEST OF MY KNOWLEDGE

Submitted Electronically

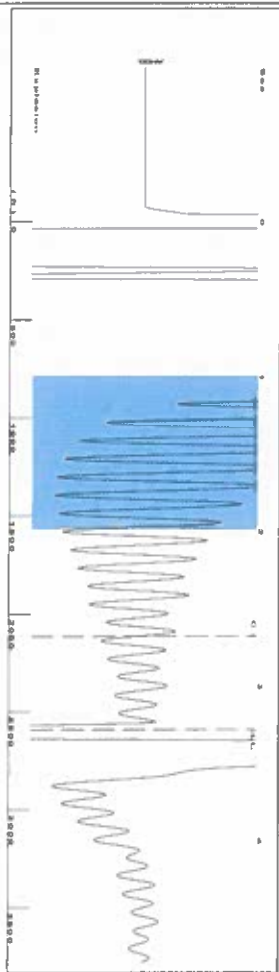
Do NOT Write in This Space - KCC USE ONLY
Date Tested: Results: Date Plugged: Date Repaired: Date Put Back in Service:
Review Completed by: Comments:
TA Approved: Yes Denied Date:

Mail to the Appropriate KCC Conservation Office:

Table with 3 columns: District Office #, Address, Phone. Rows 1-4.

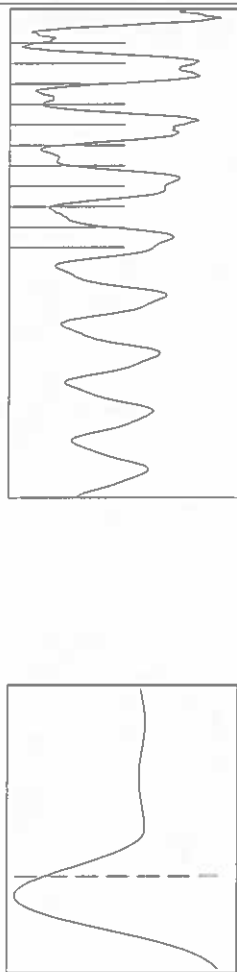


Group: SUBLETTE Well: GREEN H-1 (acquired on: 09/08/24 13:01:28 )



Filter Type High Pass  
 Manual Acoustic Vel 1509.52 ft/s  
 Automatic Collar Count Yes  
 Manual JTS/sec 23.8095  
 Time 3.286 sec  
 Joints 81.7413 Jts  
 Depth 2591.20 ft

1.10 to 2.0 (Sec) |



Analysis Method: Automatic

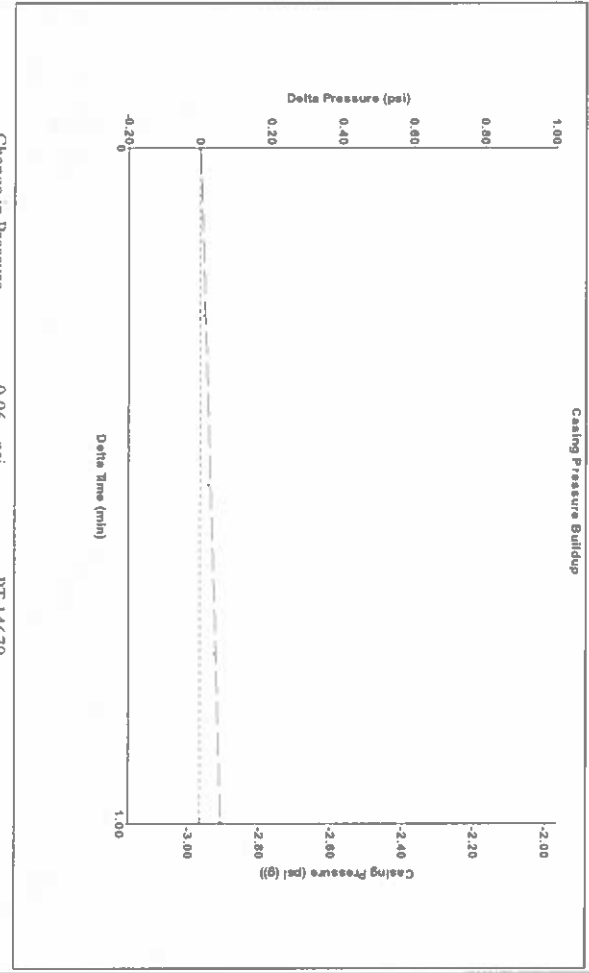
Group: SUBLETTE Well: GREEN H-1 (acquired on: 09/08/24 13:01:28 )

Production	Potential	Casing Pressure	Producing
Oil -*- Water -*- Gas -*-	-*- BBL/D -*- BBL/D -*- Mscf/D	-3.0 psi (g) Casing Pressure Buildup 0.059 psi 1.00 min Gas/Liquid Interface Pressure -2.4 psi (g)	Annular Gas Flow -*- % Liquid 94 % Mscf/D
IPR Method PBHP/SBHP Production Efficiency 0.0	Vogel -*- -	Liquid Level Depth 2591.20 ft	Pump Intake -*- psi (g) Producing BHP 1246.8 psi (g) Static BHP -*- psi (g)
Oil 40 deg API Water 1.05 Sp.Gr.H2O Gas 0.55 Sp.Gr.AIR		Pump Intake Depth -*- ft Formation Depth 5520.00 ft	
Acoustic Velocity 1577.11 ft/s			



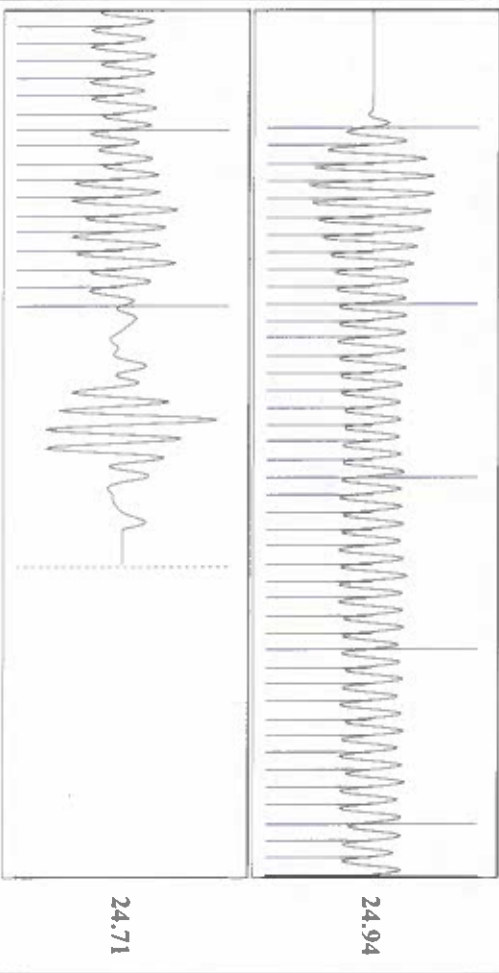
Formation Submergence  
 Total Gaseous Liquid Column HT (TVD) 2929 ft  
 Equivalent Gas Free Liquid HT (TVD) 2743 ft  
 9/8/24A

Group: SUBLETTE Well: GREEN H-1 (acquired on: 09/08/24 13:01:28 )



Change in Pressure 0.06 psi  
 Change in Time 1.00 min  
 PT 14679  
 Range 0 - ? psi

Group: SUBLETTE Well: GREEN H-1 (acquired on: 09/08/24 13:01:28 )



Acoustic Velocity 1577.11 ft/s  
 Joints Per Second 24.8756 jts/sec  
 Depth to liquid level 2591.2 ft  
 Automatic Collar Count Yes  
 Joints counted 60  
 Joints to liquid level 81.7413  
 Filler Width 21.8095  
 Time to 1st Collar 0.272

Formation Submergence  
 Total Gaseous Liquid Column HT (TVD) 2929 ft  
 Equivalent Gas Free Liquid HT (TVD) 2743 ft  
 9/8/24A

Conservation Division  
District Office No. 1  
210 E. Frontview, Suite A  
Dodge City, KS 67801



Phone: 620-682-7933  
<http://kcc.ks.gov/>

Andrew J. French, Chairperson  
Dwight D. Keen, Commissioner  
Annie Kuether, Commissioner

Laura Kelly, Governor

09/24/2024

Katherine McClurkan  
Merit Energy Company, LLC  
13727 Noel Road, Suite 1200  
Dallas, TX 75240

Re: Temporary Abandonment  
API 15-081-22023-00-01  
Green H 1  
SW/4 Sec.10-28S-34W  
Haskell County, Kansas

Dear Katherine McClurkan:

"Your temporary abandonment (TA) application for the well listed above has been approved. In accordance with K.A.R. 82-3-111 the TA status of this well will expire 09/24/2025.

- \* If you return this well to service or plug it, please notify the District Office.
- \* If you sell this well you are required to file a Transfer of Operator form, T-1.
- \* If the well will remain temporarily abandoned, you must submit a new TA application, CP-111, before 09/24/2025.

You may contact me at the number above if you have questions.

Very truly yours,

Michael Maier"