

KANSAS CORPORATION COMMISSION
OIL & GAS CONSERVATION DIVISION

TEMPORARY ABANDONMENT WELL APPLICATION

OPERATOR: License# _____
 Name: _____
 Address 1: _____
 Address 2: _____
 City: _____ State: _____ Zip: _____ + _____
 Contact Person: _____
 Phone: (_____) _____
 Contact Person Email: _____
 Field Contact Person: _____
 Field Contact Person Phone: (_____) _____

API No. 15- _____
 Spot Description: _____
 _____ - _____ - _____ - _____ Sec. _____ Twp. _____ S. R. _____ E W
 _____ feet from N / S Line of Section
 _____ feet from E / W Line of Section
 GPS Location: Lat: _____, Long: _____
(e.g. xx.xxxxx) (e.g. -xxx.xxxxx)
 Datum: NAD27 NAD83 WGS84
 County: _____ Elevation: _____ GL KB
 Lease Name: _____ Well #: _____
 Well Type: (check one) Oil Gas OG WSW Other: _____
 SWD Permit #: _____ ENHR Permit #: _____
 Gas Storage Permit #: _____
 Spud Date: _____ Date Shut-In: _____

	Conductor	Surface	Production	Intermediate	Liner	Tubing
Size						
Setting Depth						
Amount of Cement						
Top of Cement						
Bottom of Cement						

Casing Fluid Level from Surface: _____ How Determined? _____ Date: _____
 Casing Squeeze(s): _____ to _____ w / _____ sacks of cement, _____ to _____ w / _____ sacks of cement. Date: _____
(top) (bottom) (top) (bottom)
 Do you have a valid Oil & Gas Lease? Yes No
 Depth and Type: Junk in Hole at _____ Tools in Hole at _____ Casing Leaks: Yes No Depth of casing leak(s): _____
(depth) (depth)
 Type Completion: ALT. I ALT. II Depth of: DV Tool: _____ w / _____ sacks of cement Port Collar: _____ w / _____ sack of cement
(depth) (depth)
 Packer Type: _____ Size: _____ Inch Set at: _____ Feet
 Total Depth: _____ Plug Back Depth: _____ Plug Back Method: _____

Geological Data:

Formation Name	Formation Top	Formation Base	Completion Information
1. _____	At: _____	to _____ Feet	Perforation Interval _____ to _____ Feet or Open Hole Interval _____ to _____ Feet
2. _____	At: _____	to _____ Feet	Perforation Interval _____ to _____ Feet or Open Hole Interval _____ to _____ Feet

UNDER PENALTY OF PERJURY I HEREBY ATTEST THAT THE INFORMATION CONTAINED HEREIN IS TRUE AND CORRECT TO THE BEST OF MY KNOWLEDGE

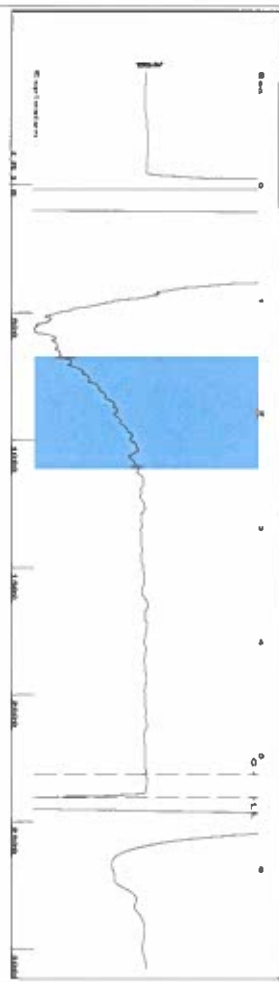
Submitted Electronically

Do NOT Write in This Space - KCC USE ONLY	Date Tested: _____	Results: _____	Date Plugged: _____	Date Repaired: _____	Date Put Back in Service: _____
	Review Completed by: _____ Comments: _____				
TA Approved: <input type="checkbox"/> Yes <input type="checkbox"/> Denied Date: _____					

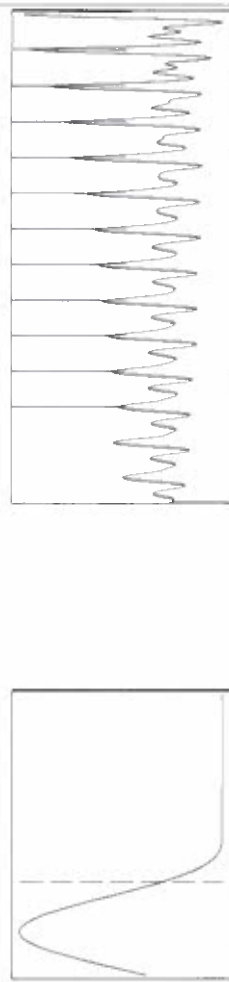
Mail to the Appropriate KCC Conservation Office:

	KCC District Office #1 - 210 E. Frontview, Suite A, Dodge City, KS 67801	Phone 620.682.7933
	KCC District Office #2 - 3450 N. Rock Road, Building 600, Suite 601, Wichita, KS 67226	Phone 316.337.7400
	KCC District Office #3 - 137 E. 21st St., Chanute, KS 66720	Phone 620.902.6450
	KCC District Office #4 - 2301 E. 13th Street, Hays, KS 67601-2651	Phone 785.261.6250

Group: Merit Energy Company-Ulysses Well: Parks 35-1 (acquired on: 09/07/24 11:44:51)



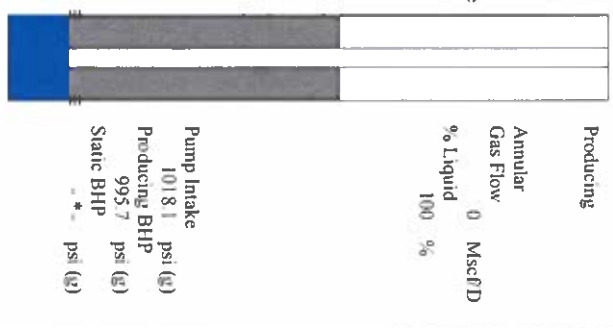
Filter Type: High Pass
 Manual Acoustic Velocity: 691 ft/s
 Automatic Collar Count: Yes
 Manual JTS: sec 13.8122
 Time: 5.375 sec
 Joints: 75.8126 Jts
 Depth: 2403.26 ft



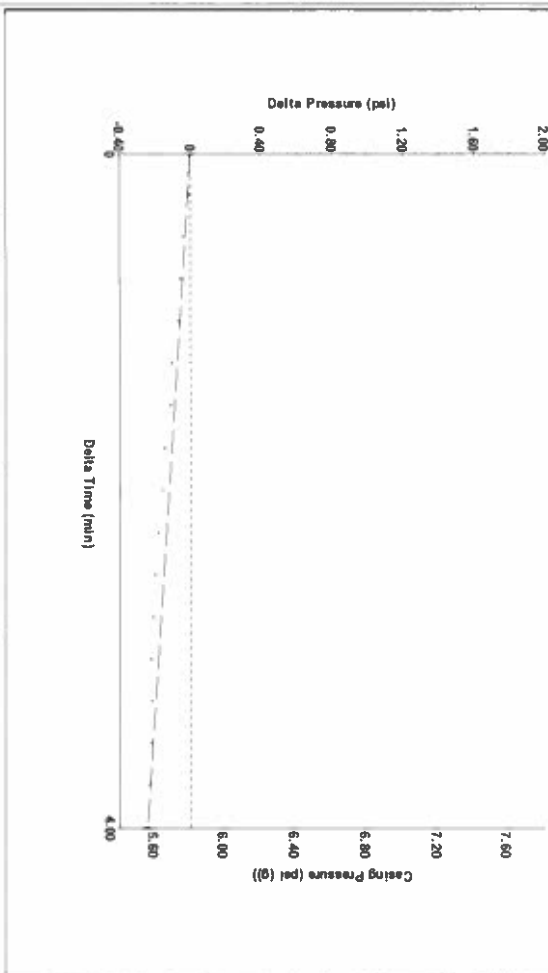
Analysis Method: Automatic

Group: Merit Energy Company-Ulysses Well: Parks 35-1 (acquired on: 09/07/24 11:44:51)

Production	Current	Potential	Casing Pressure	Producing
Oil	-*-	BBL/D	5.8 psi (g)	Annular Gas Flow
Water	-*-	BBL/D	-0.2 psi	% Liquid
Gas	-*-	MscFD	4.00 min	100 %
IPR Method		Vogel	Gas/Liquid Interface Pressure	
PBHP/SBHP		-*-	7.7 psi (g)	
Production Efficiency		0.0		
Oil	40 deg API		Liquid Level Depth	
Water	1.05 Sp.Gr./H ₂ O		2403.26 ft	
Gas	1.07 Sp.Gr./AIR		Pump Intake Depth	
Acoustic Velocity	894.235 ft/s		5510.00 ft	
			Formation Depth	
			5436.00 ft	
Formation Submergence				
Total Gaseous Liquid Column HT (TVD)				
Equivalent Gas Free Liquid HT (TVD)				
9/7/24				

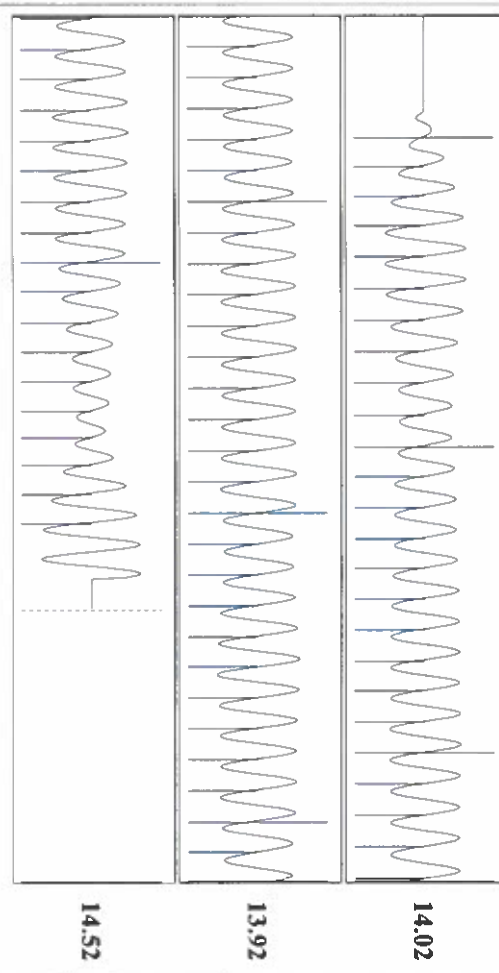


Group: Merit Energy Company-Ulysses Well: Parks 35-1 (acquired on: 09/07/24 11:44:51)



Change in Pressure: -0.24 psi
 Change in Time: 4.00 min
 PT18788
 Range: 0 - ? psi

Group: Merit Energy Company-Ulysses Well: Parks 35-1 (acquired on: 09/07/24 11:44:51)



Acoustic Velocity: 894.235 ft/s
 Joints Per Second: 14.1047 Jts/sec
 Depth to liquid level: 2403.26 ft
 Automatic Collar Count: Yes

Joints counted: 69
 Joints to liquid level: 75.8126
 Filter Width: 11.8122
 Time to 1st Collar: 5.172

Conservation Division
District Office No. 1
210 E. Frontview, Suite A
Dodge City, KS 67801



Phone: 620-682-7933
<http://kcc.ks.gov/>

Andrew J. French, Chairperson
Dwight D. Keen, Commissioner
Annie Kuether, Commissioner

Laura Kelly, Governor

09/24/2024

Idania Medina
Merit Energy Company, LLC
13727 NOEL ROAD, SUITE 1200
DALLAS, TX 75240-7362

Re: Temporary Abandonment
API 15-187-21302-00-00
Parks 35-1
NE/4 Sec.35-30S-40W
Stanton County, Kansas

Dear Idania Medina:

"Your temporary abandonment (TA) application for the well listed above has been approved. In accordance with K.A.R. 82-3-111 the TA status of this well will expire 09/24/2025.

- * If you return this well to service or plug it, please notify the District Office.
- * If you sell this well you are required to file a Transfer of Operator form, T-1.
- * If the well will remain temporarily abandoned, you must submit a new TA application, CP-111, before 09/24/2025.

You may contact me at the number above if you have questions.

Very truly yours,

Michael Maier"