

KANSAS CORPORATION COMMISSION
OIL & GAS CONSERVATION DIVISION

TEMPORARY ABANDONMENT WELL APPLICATION

OPERATOR: License#
Name:
Address 1:
Address 2:
City: State: Zip:
Contact Person:
Phone:
Contact Person Email:
Field Contact Person:
Field Contact Person Phone:

API No. 15-
Spot Description:
Sec. Twp. S. R.
feet from N / S Line of Section
feet from E / W Line of Section
GPS Location: Lat: , Long:
Datum: NAD27 NAD83 WGS84
County: Elevation: GL KB
Lease Name: Well #:
Well Type: (check one) Oil Gas OG WSW Other:
SWD Permit #: ENHR Permit #:
Gas Storage Permit #:
Spud Date: Date Shut-In:

Table with 7 columns: Conductor, Surface, Production, Intermediate, Liner, Tubing. Rows include Size, Setting Depth, Amount of Cement, Top of Cement, Bottom of Cement.

Casing Fluid Level from Surface: How Determined? Date:
Casing Squeeze(s): to w / sacks of cement, to w / sacks of cement. Date:
Do you have a valid Oil & Gas Lease? Yes No
Depth and Type: Junk in Hole at Tools in Hole at Casing Leaks: Yes No Depth of casing leak(s):
Type Completion: ALT. I ALT. II Depth of: DV Tool: w / sacks of cement Port Collar: w / sack of cement
Packer Type: Size: Inch Set at: Feet
Total Depth: Plug Back Depth: Plug Back Method:

Geological Data:

Table with 4 columns: Formation Name, Formation Top, Formation Base, Completion Information. Rows 1 and 2.

UNDER PENALTY OF PERJURY I HEREBY ATTEST THAT THE INFORMATION CONTAINED HEREIN IS TRUE AND CORRECT TO THE BEST OF MY KNOWLEDGE

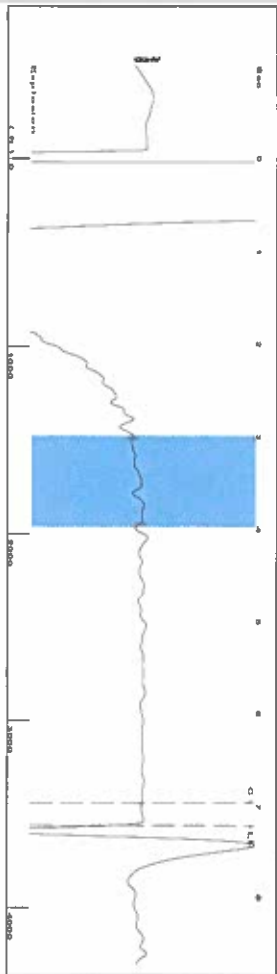
Submitted Electronically

Do NOT Write in This Space - KCC USE ONLY
Date Tested: Results: Date Plugged: Date Repaired: Date Put Back in Service:
Review Completed by: Comments:
TA Approved: Yes Denied Date:

Mail to the Appropriate KCC Conservation Office:

Table with 3 columns: District Office #, Address, Phone. Rows 1-4.

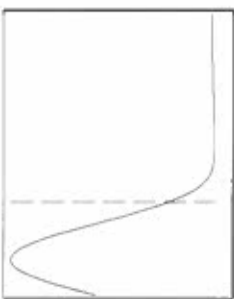
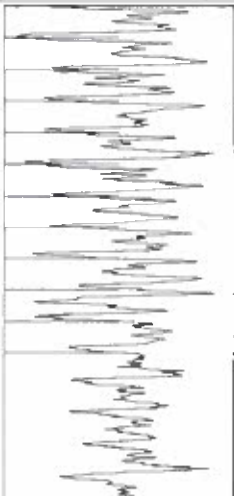
Group: Merit Energy Company-Ulysses Well: Wilson 1 (acquired on: 09/07/24 13:42:20)



Filter Type High Pass Automatic Collar Count Yes
 Manual Acoustic Velocity 625 ft/s Manual JTS/Sec 15.625

[3.0 to 4.0 (Sec)]

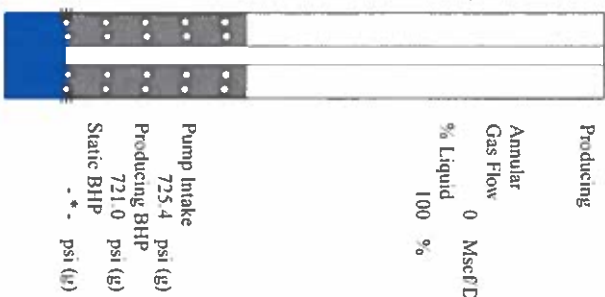
Time 7.223 sec
 Joints 112.454 Jts
 Depth 3564.79 ft



Analysis Method: Automatic

Group: Merit Energy Company-Ulysses Well: Wilson 1 (acquired on: 09/07/24 13:42:20)

Production	Potential	Casing Pressure	Producing
Oil - *	BBL/D - *	8.7 psi (g)	Annular Gas Flow 0 MscFD
Water - *	BBL/D - *	Casing Pressure Buildup 0.1 psi	% Liquid 100 %
Gas - *	MscFD - *	4.00 min	
IPR Method PBHP/SBHP	Vogel - *	Gas/Liquid Interface Pressure 11.7 psi (g)	
Production Efficiency 0.0		Liquid Level Depth 3564.79 ft	
Oil 40 deg API		Pump Intake Depth 5715.00 ft	
Water 1.05 Sp.Gr H2O		Formation Depth 5701.00 ft	
Gas 0.99 Sp.Gr AIR			
Acoustic Velocity 987.066 ft/s			
Formation Submergence			
Total Gaseous Liquid Column HT (TVD) 2150 ft			
Equivalent Gas Free Liquid HT (TVD) 2150 ft			

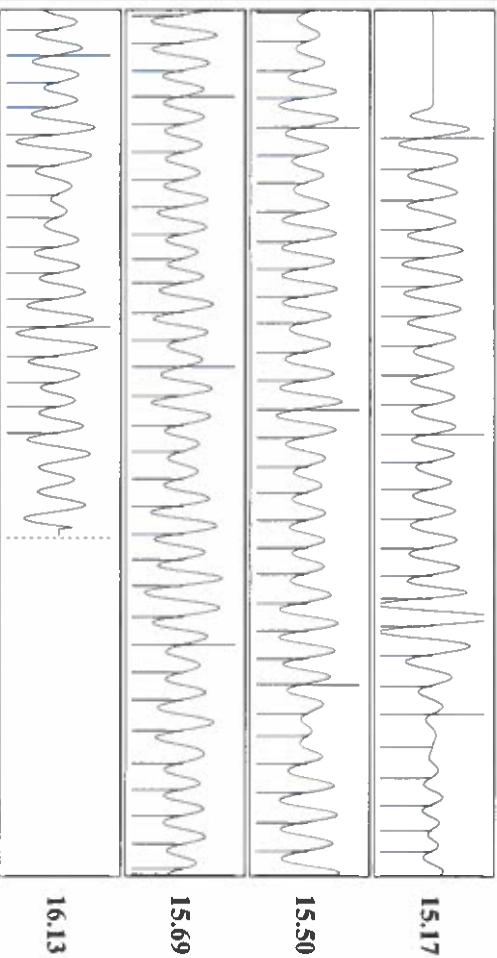


Group: Merit Energy Company-Ulysses Well: Wilson 1 (acquired on: 09/07/24 13:42:20)



Change in Pressure 0.06 psi PT18788
 Change in Time 4.00 min Range

Group: Merit Energy Company-Ulysses Well: Wilson 1 (acquired on: 09/07/24 13:42:20)



Acoustic Velocity	987.066 ft/s	Joints counted	104
Joints Per Second	15.5689 Jts/Sec	Joints to liquid level	112.454
Depth to liquid level	3564.79 ft	Filter Width	13.625
Automatic Collar Count	Yes	Time to 1st Collar	0.296

Conservation Division
District Office No. 1
210 E. Frontview, Suite A
Dodge City, KS 67801



Phone: 620-682-7933
<http://kcc.ks.gov/>

Andrew J. French, Chairperson
Dwight D. Keen, Commissioner
Annie Kuether, Commissioner

Laura Kelly, Governor

09/24/2024

Idania Medina
Merit Energy Company, LLC
13727 Noel Road, Suite 1200
Dallas, TX 75240-7362

Re: Temporary Abandonment
API 15-187-20469-00-00
Wilson Unit 1
NW/4 Sec.26-29S-39W
Stanton County, Kansas

Dear Idania Medina:

"Your temporary abandonment (TA) application for the well listed above has been approved. In accordance with K.A.R. 82-3-111 the TA status of this well will expire 09/24/2025.

- * If you return this well to service or plug it, please notify the District Office.
- * If you sell this well you are required to file a Transfer of Operator form, T-1.
- * If the well will remain temporarily abandoned, you must submit a new TA application, CP-111, before 09/24/2025.

You may contact me at the number above if you have questions.

Very truly yours,

Michael Maier"