

KANSAS CORPORATION COMMISSION
OIL & GAS CONSERVATION DIVISION

TEMPORARY ABANDONMENT WELL APPLICATION

OPERATOR: License#
Name:
Address 1:
Address 2:
City: State: Zip:
Contact Person:
Phone:
Contact Person Email:
Field Contact Person:
Field Contact Person Phone:

API No. 15-
Spot Description:
Sec. Twp. S. R.
GPS Location: Lat: Long:
Datum: NAD27 NAD83 WGS84
County: Elevation:
Lease Name: Well #:
Well Type: Oil Gas OG WSW Other:
SWD Permit #: ENHR Permit #:
Gas Storage Permit #:
Spud Date: Date Shut-In:

Table with 7 columns: Conductor, Surface, Production, Intermediate, Liner, Tubing. Rows include Size, Setting Depth, Amount of Cement, Top of Cement, Bottom of Cement.

Casing Fluid Level from Surface: How Determined? Date:
Casing Squeeze(s): to w / sacks of cement, to w / sacks of cement. Date:
Do you have a valid Oil & Gas Lease? Yes No
Depth and Type: Junk in Hole at Tools in Hole at Casing Leaks: Yes No Depth of casing leak(s):
Type Completion: ALT. I ALT. II Depth of: DV Tool: w / sacks of cement Port Collar: w / sack of cement
Packer Type: Size: Inch Set at: Feet
Total Depth: Plug Back Depth: Plug Back Method:

Geological Data:

Table with 4 columns: Formation Name, Formation Top, Formation Base, Completion Information. Rows 1 and 2.

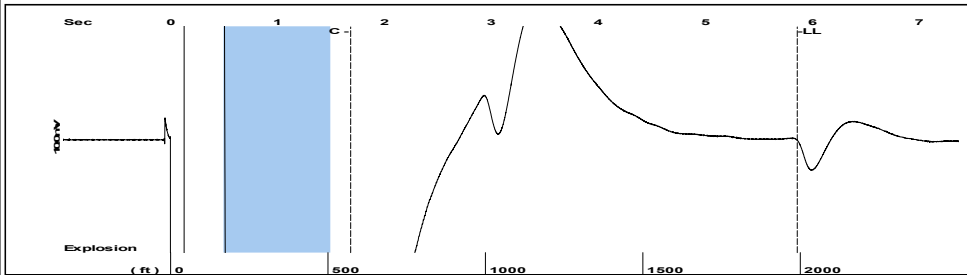
UNDER PENALTY OF PERJURY I HEREBY ATTEST THAT THE INFORMATION CONTAINED HEREIN IS TRUE AND CORRECT TO THE BEST OF MY KNOWLEDGE

Submitted Electronically

Do NOT Write in This Space - KCC USE ONLY
Date Tested: Results: Date Plugged: Date Repaired: Date Put Back in Service:
Review Completed by: Comments:
TA Approved: Yes Denied Date:

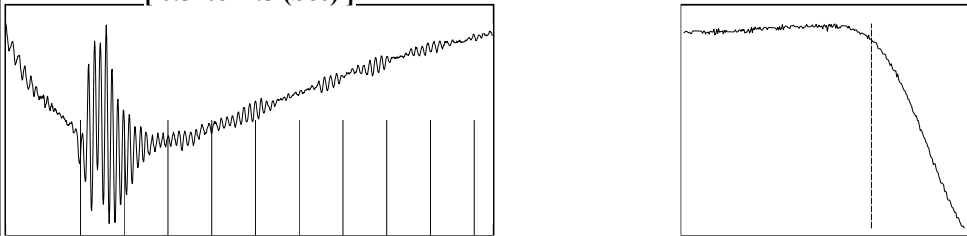
Mail to the Appropriate KCC Conservation Office:

Table with 3 columns: District Office, Address, Phone. Rows 1-4.

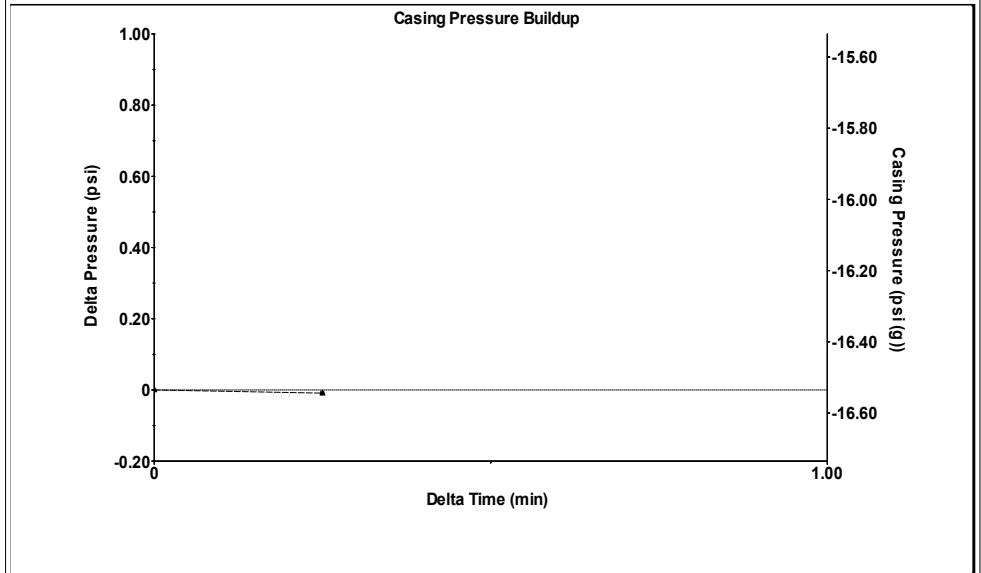


Filter Type High Pass Automatic Collar Count Yes Time 5.86 sec
 Manual Acoustic Veloc 705.228 ft/s Manual JTS/sec 11.1235 Joints 62.7857 Jts
 Depth 1990.31 ft

[0.5 to 1.5 (Sec)]

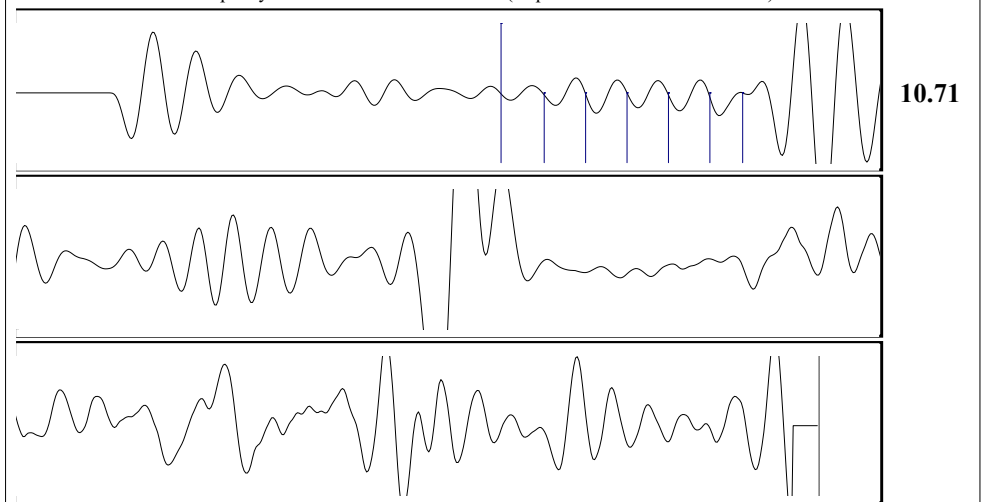


Analysis Method: Automatic



Change in Pressure -0.01 psi PT12363
 Change in Time 0.25 min Range 0 - ? psi

Production	Potential	Casing Pressure	Producing
Oil - * -	- * - BBL/D	-14.7 psi (g)	
Water - * -	- * - BBL/D	Casing Pressure Buildup	Annular Gas Flow - * - Mscf/D
Gas - * -	- * - Mscf/D	-0.0 psi	% Liquid 100 %
		0.25 min	
IPR Method	Vogel	Gas/Liquid Interface Pressure	Pump Intake
PBHP/SBHP - * -	- * -	- * - psi (g)	- * - psi (g)
Production Efficiency 0.0			Producing BHP
			- * - psi (g)
Oil 40 deg.API	Liquid Level Depth	Liquid Level Depth	Static BHP
Water 1.05 Sp.Gr.H2O	1990.31 ft		- * - psi (g)
Gas 0.70 Sp.Gr.AIR		Pump Intake Depth	
		3280.00 ft	
Acoustic Velocity 679.286 ft/s	Formation Depth	3188.00 ft	
Formation Submergence			
Total Gaseous Liquid Column HT (TVD)	- * - ft		
Equivalent Gas Free Liquid HT (TVD)	- * - ft		
Acoustic Test			



Acoustic Velocity 679.286 ft/s Joints counted 6
 Joints Per Second 10.7143 jts/sec Joints to liquid level 62.7857
 Depth to liquid level 1990.31 ft Filter Width 9.12347 13.1235
 Automatic Collar Count Yes Time to 1st Collar 1.124 1.684

Conservation Division
District Office No. 2
3450 N. Rock Road
Building 600, Suite 601
Wichita, KS 67226



Phone: 316-337-7400
<http://kcc.ks.gov/>

Andrew J. French, Chairperson
Dwight D. Keen, Commissioner
Annie Kuether, Commissioner

Laura Kelly, Governor

09/27/2024

David Van Dyke
Vess Oil Corporation
1700 N WATERFRONT PKWY BLDG 500
WICHITA, KS 67206-6619

Re: Temporary Abandonment
API 15-159-21452-00-00
BERSCHIEDT C 2
SW/4 Sec.07-20S-10W
Rice County, Kansas

Dear David Van Dyke:

"Your temporary abandonment (TA) application for the well listed above has been approved. In accordance with K.A.R. 82-3-111 the TA status of this well will expire 08/27/2025.

- * If you return this well to service or plug it, please notify the District Office.
- * If you sell this well you are required to file a Transfer of Operator form, T-1.
- * If the well will remain temporarily abandoned, you must submit a new TA application, CP-111, before 08/27/2025.

You may contact me at the number above if you have questions.

Very truly yours,

Virgil Clothier"