

KANSAS CORPORATION COMMISSION
OIL & GAS CONSERVATION DIVISION

TEMPORARY ABANDONMENT WELL APPLICATION

OPERATOR: License#
Name:
Address 1:
Address 2:
City: State: Zip:
Contact Person:
Phone:
Contact Person Email:
Field Contact Person:
Field Contact Person Phone:

API No. 15-
Spot Description:
Sec. Twp. S. R.
GPS Location: Lat, Long
Datum: NAD27, NAD83, WGS84
County: Elevation:
Lease Name: Well #:
Well Type: Oil, Gas, OG, WSW, Other
SWD Permit #: ENHR Permit #:
Gas Storage Permit #:
Spud Date: Date Shut-In:

Table with 7 columns: Conductor, Surface, Production, Intermediate, Liner, Tubing. Rows include Size, Setting Depth, Amount of Cement, Top of Cement, Bottom of Cement.

Casing Fluid Level from Surface: How Determined? Date:
Casing Squeeze(s): to w / sacks of cement, to w / sacks of cement. Date:
Do you have a valid Oil & Gas Lease? Yes No
Depth and Type: Junk in Hole at Tools in Hole at Casing Leaks: Yes No Depth of casing leak(s):
Type Completion: ALT. I ALT. II Depth of: DV Tool: w / sacks of cement Port Collar: w / sack of cement
Packer Type: Size: Inch Set at: Feet
Total Depth: Plug Back Depth: Plug Back Method:

Geological Date:

Table with 4 columns: Formation Name, Formation Top, Formation Base, Completion Information. Rows 1 and 2.

UNDER PENALTY OF PERJURY I HEREBY ATTEST THAT THE INFORMATION CONTAINED HEREIN IS TRUE AND CORRECT TO THE BEST OF MY KNOWLEDGE

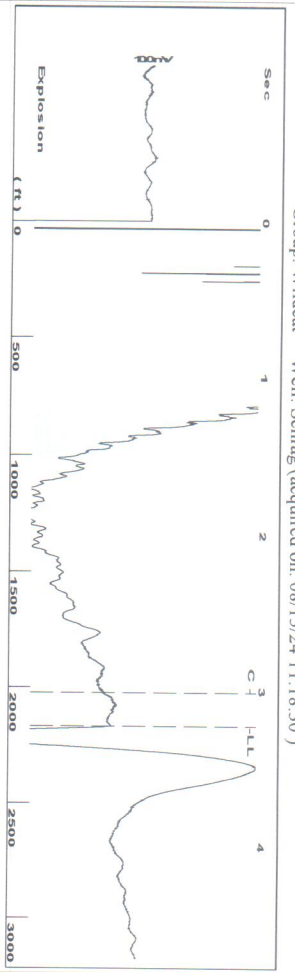
Submitted Electronically

Do NOT Write in This Space - KCC USE ONLY
Date Tested: Results: Date Plugged: Date Repaired: Date Put Back in Service:
Review Completed by: Comments:
TA Approved: Yes Denied Date:

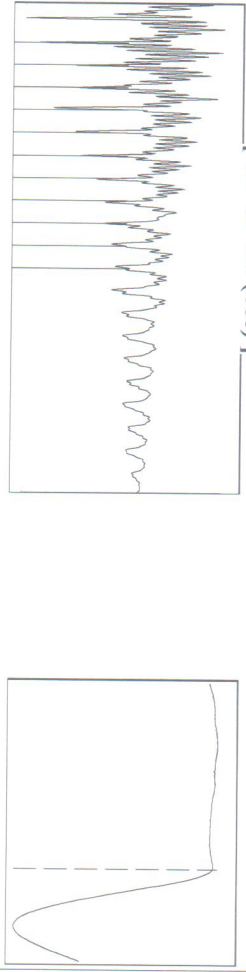
Mail to the Appropriate KCC Conservation Office:

Table with 3 columns: District Office #, Address, Phone. Rows 1-4.

Group: Wildcat Well: Schrag (acquired on: 08/15/24 11:18:30)



Filter Type High Pass Automatic Collar Count Yes  
 Manual Acoustic Velo 1360.52 ft/s Manual JTS/sec 21.4592  
 Time 3.227 sec  
 Joints 68.3088 Jts  
 Depth 2165.39 ft



Analysis Method: Automatic

Group: Wildcat Well: Schrag (acquired on: 08/15/24 11:18:30)

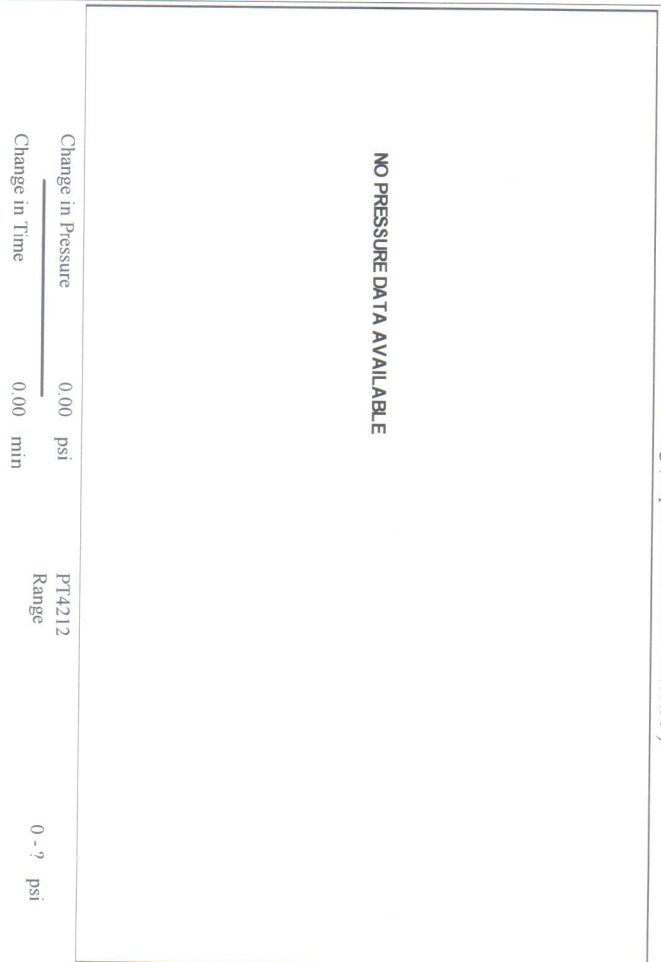
Production	Potential	Casing Pressure	Static
Current	BB/L/D	3.9 psi (g)	Oil Column Height
Oil	BB/L/D	Casing Pressure Buildup	MID 0 ft
Water	Misc/D	-* - psi	Water Column Height
Gas		-* - min	MID 1965 ft
IPR Method	Vogel	Gas/Liquid Interface Pressure	
PBHP/SBHP	-* -	4.9 psi (g)	
Production Efficiency	0.0		
Oil 40 deg API		Liquid Level Depth	
Water 1.05 Sp.Gr:H2O		2165.39 ft	
Gas 0.66 Sp.Gr:AIR		Pump Intake Depth	
Acoustic Velocity	1342.04 ft/s	4200.00 ft	
		Formation Depth	
		4140.00 ft	



Acoustic Test

Static BHP 898.1 psi (g)

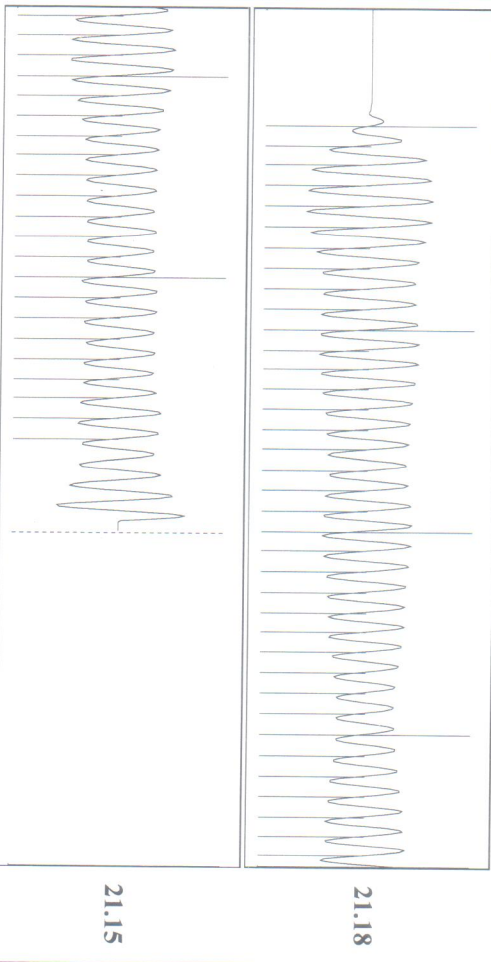
Group: Wildcat Well: Schrag (acquired on: 08/15/24 11:18:30)



NO PRESSURE DATA AVAILABLE

Change in Pressure 0.00 psi PT4212 Range  
 Change in Time 0.00 min 0 - ? psi

Group: Wildcat Well: Schrag (acquired on: 08/15/24 11:18:30)



Acoustic Velocity	Joints Per Second	Depth to liquid level	Automatic Collar Count	Joints counted	Joints to liquid level	Filter Width	Time to 1st Collar
1342.04 ft/s	21.1679 ft/sec	2165.39 ft	Yes	58	68.3088	19.4592	23.4592
						0.272	3.012

Conservation Division  
District Office No. 2  
3450 N. Rock Road  
Building 600, Suite 601  
Wichita, KS 67226



Phone: 316-337-7400  
<http://kcc.ks.gov/>

Andrew J. French, Chairperson  
Dwight D. Keen, Commissioner  
Annie Kuether, Commissioner

Laura Kelly, Governor

09/11/2024

Joan Adelhardt  
Wildcat Oil & Gas LLC  
PO BOX 67  
SENECA, KS 66538-0067

Re: Temporary Abandonment  
API 15-095-22228-00-00  
SCHRAG 1  
NW/4 Sec.19-29S-06W  
Kingman County, Kansas

Dear Joan Adelhardt:

"Your temporary abandonment (TA) application for the well listed above has been approved. In accordance with K.A.R. 82-3-111 the TA status of this well will expire 09/11/2025.

- \* If you return this well to service or plug it, please notify the District Office.
- \* If you sell this well you are required to file a Transfer of Operator form, T-1.
- \* If the well will remain temporarily abandoned, you must submit a new TA application, CP-111, before 09/11/2025.

You may contact me at the number above if you have questions.

Very truly yours,

Neil Lake, ECRS"