

KANSAS CORPORATION COMMISSION
OIL & GAS CONSERVATION DIVISION

TEMPORARY ABANDONMENT WELL APPLICATION

OPERATOR: License#
Name:
Address 1:
Address 2:
City: State: Zip:
Contact Person:
Phone:
Contact Person Email:
Field Contact Person:
Field Contact Person Phone:

API No. 15-
Spot Description:
Sec. Twp. S. R.
GPS Location: Lat: Long:
Datum: NAD27 NAD83 WGS84
County: Elevation:
Lease Name: Well #:
Well Type: Oil Gas OG WSW Other:
SWD Permit #: ENHR Permit #:
Gas Storage Permit #:
Spud Date: Date Shut-In:

Table with 7 columns: Conductor, Surface, Production, Intermediate, Liner, Tubing. Rows include Size, Setting Depth, Amount of Cement, Top of Cement, Bottom of Cement.

Casing Fluid Level from Surface: How Determined? Date:
Casing Squeeze(s): to w / sacks of cement, to w / sacks of cement. Date:
Do you have a valid Oil & Gas Lease? Yes No
Depth and Type: Junk in Hole at Tools in Hole at Casing Leaks: Yes No Depth of casing leak(s):
Type Completion: ALT. I ALT. II Depth of: DV Tool: w / sacks of cement Port Collar: w / sack of cement
Packer Type: Size: Inch Set at: Feet
Total Depth: Plug Back Depth: Plug Back Method:

Geological Data:

Table with 4 columns: Formation Name, Formation Top, Formation Base, Completion Information. Rows 1 and 2.

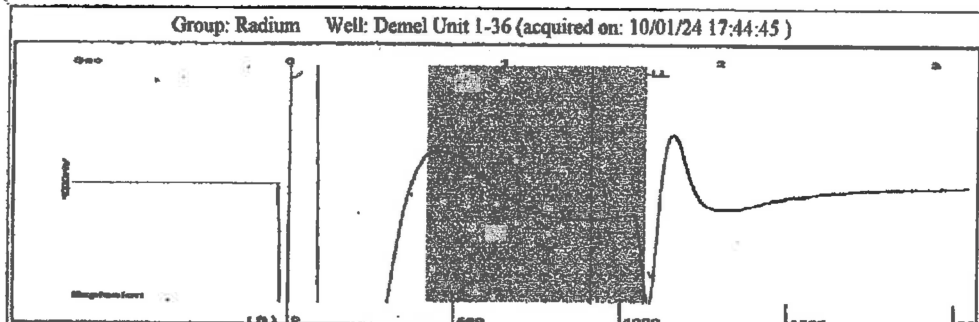
UNDER PENALTY OF PERJURY I HEREBY ATTEST THAT THE INFORMATION CONTAINED HEREIN IS TRUE AND CORRECT TO THE BEST OF MY KNOWLEDGE

Submitted Electronically

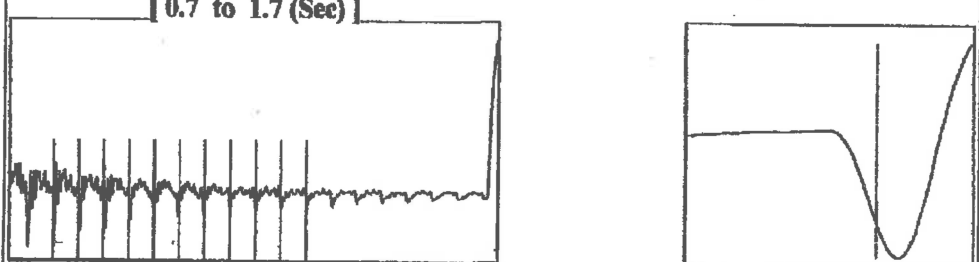
Do NOT Write in This Space - KCC USE ONLY
Date Tested: Results: Date Plugged: Date Repaired: Date Put Back in Service:
Review Completed by: Comments:
TA Approved: Yes Denied Date:

Mail to the Appropriate KCC Conservation Office:

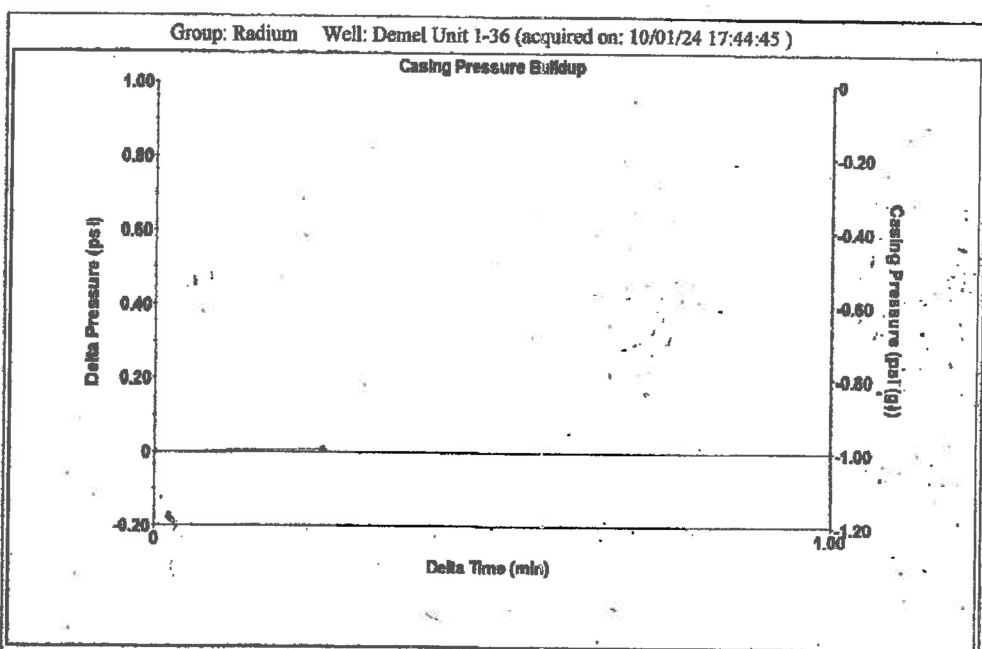
Map of Kansas with 4 numbered districts and corresponding office addresses and phone numbers.



Filter Type High Pass Automatic Collar Count Yes Time 1.653 sec  
 Manual Acoustic Velo 1258.41 ft/s Manual JTS/sec 19.3424 Joints 32.8884 Jts  
 Depth 1069.86 ft



Analysis Method: Automatic



Change in Pressure 0.01 psi FT13440  
 Change in Time 0.25 min Range 0 - ? psi

Group: Radium Well: Demel Unit 1-36 (acquired on: 10/01/24 17:44:45)

<b>Production</b> Current Potential Oil - * - BBL/D Water - * - BBL/D Gas - * - Mscf/D  IPR Method Vogel PBHP/SBHP - * - Production Efficiency 0.0  Oil 40 deg API Water 1.05 Sp.Gr.H2O Gas 0.69 Sp.Gr.AIR  Acoustic Velocity 1294.45 ft/s	Casing Pressure -1.0 psi (g) Casing Pressure Buildup 0.007 psi 0.25 min Gas/Liquid Interface Pressure -0.6 psi (g)  Liquid Level Depth 1069.86 ft  Pump Intake Depth 3807.00 ft Formation Depth 3770.00 ft  Formation Submergence Total Gaseous Liquid Column HT (TVD) 2737 ft Equivalent Gas Free Liquid HT (TVD) 2737 ft  Acoustic Test	<b>Producing</b>  Annular Gas Flow 0 Mscf/D % Liquid 100 %  Pump Intake 906.4 psi (g) Producing BHP 894.8 psi (g) Static BHP - * - psi (g)
--	---	---

Group: Radium Well: Demel Unit 1-36 (acquired on: 10/01/24 17:44:45)

19.90

Acoustic Velocity 1294.45 ft/s Joints Per Second 19.8962 jts/sec Depth to liquid level 1069.86 ft Automatic Collar Count Yes	Joints counted 23 Joints to liquid level 32.8884 Filter Width 17.3424 21.3424 Time to 1st Collar 0.252 1.408
---	---

Conservation Division  
District Office No. 1  
210 E. Frontview, Suite A  
Dodge City, KS 67801



Phone: 620-682-7933  
<http://kcc.ks.gov/>

Andrew J. French, Chairperson  
Dwight D. Keen, Commissioner  
Annie Kuether, Commissioner

Laura Kelly, Governor

10/10/2024

Loveness Mpanje  
F. G. Holl Company L.L.C.  
9431 E CENTRAL STE 100  
WICHITA, KS 67206-2563

Re: Temporary Abandonment  
API 15-145-21682-00-01  
DEMEL UNIT "OWWO" 1-36  
SW/4 Sec.36-20S-16W  
Pawnee County, Kansas

Dear Loveness Mpanje:

"Your temporary abandonment (TA) application for the well listed above has been approved. In accordance with K.A.R. 82-3-111 the TA status of this well will expire 10/10/2025.

- \* If you return this well to service or plug it, please notify the District Office.
- \* If you sell this well you are required to file a Transfer of Operator form, T-1.
- \* If the well will remain temporarily abandoned, you must submit a new TA application, CP-111, before 10/10/2025.

You may contact me at the number above if you have questions.

Very truly yours,

Michael Maier"