

KANSAS CORPORATION COMMISSION
OIL & GAS CONSERVATION DIVISION

TEMPORARY ABANDONMENT WELL APPLICATION

OPERATOR: License#
Name:
Address 1:
Address 2:
City: State: Zip:
Contact Person:
Phone:
Contact Person Email:
Field Contact Person:
Field Contact Person Phone:

API No. 15-
Spot Description:
Sec. Twp. S. R.
GPS Location: Lat: Long:
Datum: NAD27 NAD83 WGS84
County: Elevation:
Lease Name: Well #:
Well Type: Oil Gas OG WSW Other:
SWD Permit #: ENHR Permit #:
Gas Storage Permit #:
Spud Date: Date Shut-In:

Table with 7 columns: Conductor, Surface, Production, Intermediate, Liner, Tubing. Rows include Size, Setting Depth, Amount of Cement, Top of Cement, Bottom of Cement.

Casing Fluid Level from Surface: How Determined? Date:
Casing Squeeze(s): to w / sacks of cement, to w / sacks of cement. Date:
Do you have a valid Oil & Gas Lease? Yes No
Depth and Type: Junk in Hole at Tools in Hole at Casing Leaks: Yes No Depth of casing leak(s):
Type Completion: ALT. I ALT. II Depth of: DV Tool: w / sacks of cement Port Collar: w / sack of cement
Packer Type: Size: Inch Set at: Feet
Total Depth: Plug Back Depth: Plug Back Method:

Geological Date:

Table with 4 columns: Formation Name, Formation Top, Formation Base, Completion Information. Rows 1 and 2.

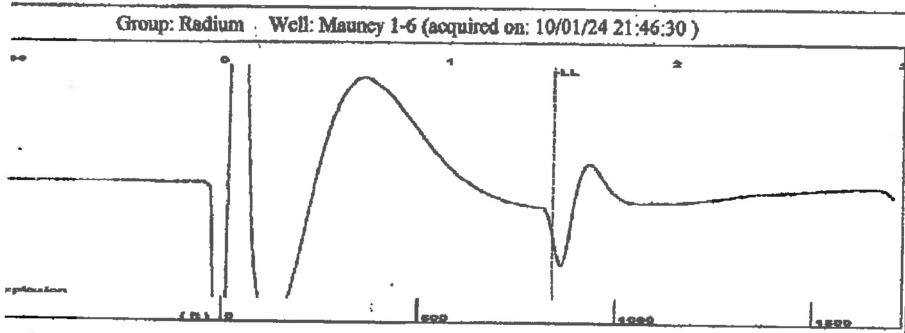
UNDER PENALTY OF PERJURY I HEREBY ATTEST THAT THE INFORMATION CONTAINED HEREIN IS TRUE AND CORRECT TO THE BEST OF MY KNOWLEDGE

Submitted Electronically

Do NOT Write in This Space - KCC USE ONLY
Date Tested: Results: Date Plugged: Date Repaired: Date Put Back in Service:
Review Completed by: Comments:
TA Approved: Yes Denied Date:

Mail to the Appropriate KCC Conservation Office:

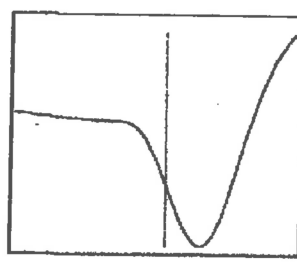
Table with 3 columns: District Office #, Address, Phone. Includes map of Kansas with numbered districts 1-4.



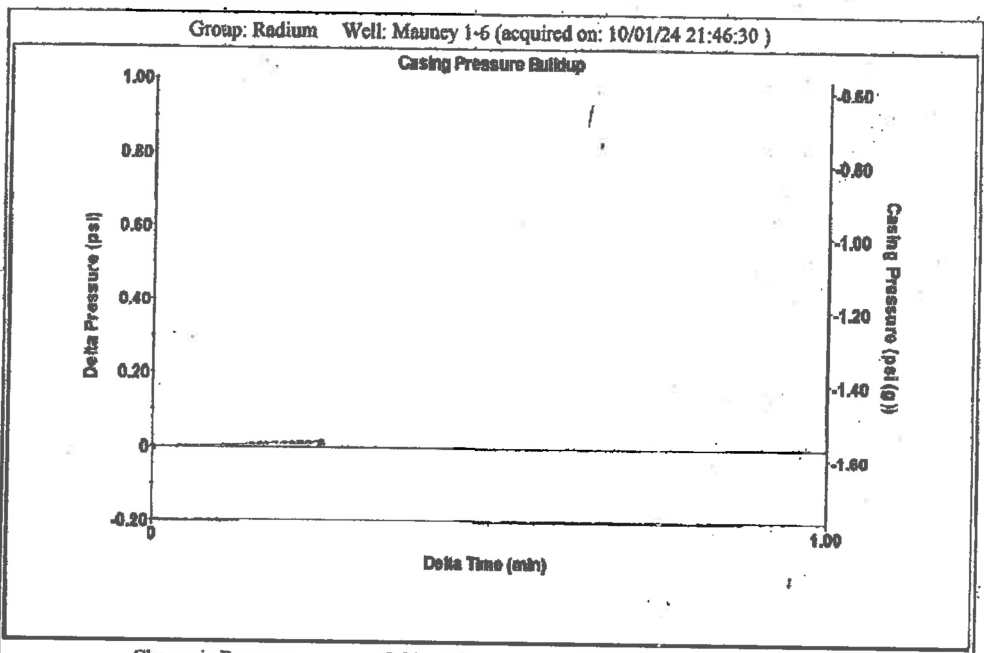
Time 1.462 sec
 Joints 26.7297 Jts
 Depth 840.65 ft

Liquid level calculated with user supplied Acoustic Velocity

Acoustic Velocity 1150 ft/s



Analysis Method: Acoustic Velocity



Change in Pressure 0.01 psi PT13440
 Change in Time 0.25 min Range 0-7 psi

Group: Radium Well: Mauney 1-6 (acquired on: 10/01/24 21:46:30)

Current	Potential	Casing Pressure	Producing
- * -	- * - BBL/D	-1.6 psi (g)	Annular Gas Flow
- * -	- * - BBL/D	Casing Pressure Buildup	0 Mscf/D
- * -	- * - Mscf/D	0.012 psi	% Liquid
		0.25 min	100 %
Method	Vogel	Gas/Liquid Interface Pressure	
/SBHP	- * -	-1.2 psi (g)	
Correction Efficiency	0.0		
		Liquid Level Depth	
40 deg API		840.65 ft	
1.05 Sp.Gr.H2O		Pump Intake Depth	
0.85 Sp.Gr.AIR		3668.00 ft	
Acoustic Velocity	1150 ft/s	Formation Depth	
		3808.00 ft	
			Pump Intake
			933.6 psi (g)
			Producing BHP
			997.2 psi (g)
			Static BHP
			- * - psi (g)
Position Submergence			
Gaseous Liquid Column HT (TVD)	2827 ft		
Equivalent Gas Free Liquid HT (TVD)	2827 ft		
Acoustic Test			

Group: Radium Well: Mauney 1-6 (acquired on: 10/01/24 21:46:30)

Entered Acoustic Velocity for Liquid Level depth determination

Conservation Division
District Office No. 1
210 E. Frontview, Suite A
Dodge City, KS 67801



Phone: 620-682-7933
<http://kcc.ks.gov/>

Andrew J. French, Chairperson
Dwight D. Keen, Commissioner
Annie Kuether, Commissioner

Laura Kelly, Governor

10/10/2024

Loveness Mpanje
F. G. Holl Company L.L.C.
9431 E CENTRAL STE 100
WICHITA, KS 67206-2563

Re: Temporary Abandonment
API 15-145-21688-00-00
MAUNEY 1-6
NE/4 Sec.06-21S-15W
Pawnee County, Kansas

Dear Loveness Mpanje:

"Your temporary abandonment (TA) application for the well listed above has been approved. In accordance with K.A.R. 82-3-111 the TA status of this well will expire 06/28/2025.

- * If you return this well to service or plug it, please notify the District Office.
- * If you sell this well you are required to file a Transfer of Operator form, T-1.
- * If the well will remain temporarily abandoned, you must submit a new TA application, CP-111, before 06/28/2025.

You may contact me at the number above if you have questions.

Very truly yours,

Michael Maier"