

KANSAS CORPORATION COMMISSION
OIL & GAS CONSERVATION DIVISION

TEMPORARY ABANDONMENT WELL APPLICATION

OPERATOR: License#
Name:
Address 1:
Address 2:
City: State: Zip:
Contact Person:
Phone:
Contact Person Email:
Field Contact Person:
Field Contact Person Phone:

API No. 15-
Spot Description:
Sec. Twp. S. R.
GPS Location: Lat: Long:
Datum: NAD27 NAD83 WGS84
County: Elevation:
Lease Name: Well #:
Well Type: Oil Gas OG WSW Other:
SWD Permit #: ENHR Permit #:
Gas Storage Permit #:
Spud Date: Date Shut-In:

Table with 7 columns: Conductor, Surface, Production, Intermediate, Liner, Tubing. Rows include Size, Setting Depth, Amount of Cement, Top of Cement, Bottom of Cement.

Casing Fluid Level from Surface: How Determined? Date:
Casing Squeeze(s): to w / sacks of cement, to w / sacks of cement. Date:
Do you have a valid Oil & Gas Lease? Yes No
Depth and Type: Junk in Hole at Tools in Hole at Casing Leaks: Yes No Depth of casing leak(s):
Type Completion: ALT. I ALT. II Depth of: DV Tool: w / sacks of cement Port Collar: w / sack of cement
Packer Type: Size: Inch Set at: Feet
Total Depth: Plug Back Depth: Plug Back Method:

Geological Data:

Table with 4 columns: Formation Name, Formation Top, Formation Base, Completion Information. Rows 1 and 2.

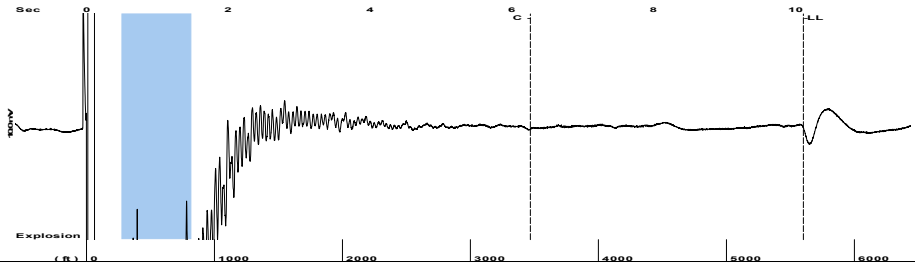
UNDER PENALTY OF PERJURY I HEREBY ATTEST THAT THE INFORMATION CONTAINED HEREIN IS TRUE AND CORRECT TO THE BEST OF MY KNOWLEDGE

Submitted Electronically

Do NOT Write in This Space - KCC USE ONLY
Date Tested: Results: Date Plugged: Date Repaired: Date Put Back in Service:
Review Completed by: Comments:
TA Approved: Yes Denied Date:

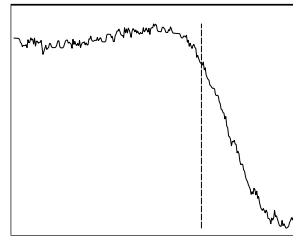
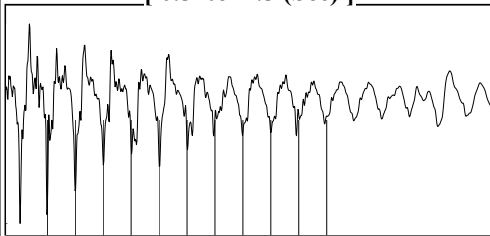
Mail to the Appropriate KCC Conservation Office:

Table with 2 columns: Office Address, Phone. Rows for District Office #1, #2, #3, #4.

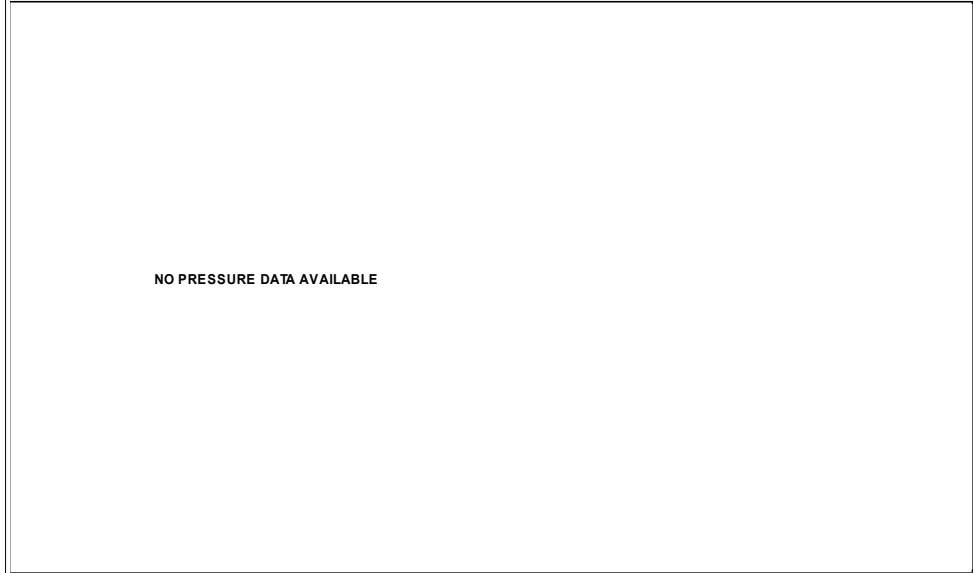


Filter Type High Pass Automatic Collar Count Yes Time 10.117 sec
 Manual Acoustic Veloc 1104.53 ft/s Manual JTS/sec 17.4216 Joints 176.694 Jts
 Depth 5601.20 ft

[0.5 to 1.5 (Sec)]



Analysis Method: Automatic



Change in Pressure 0.00 psi PT12098
 Range 0 - ? psi
 Change in Time 0.00 min

Production	Potential	Casing Pressure
Current		0.0 psi (g)
Oil - * -	- * - BBL/D	Casing Pressure Buildup
Water - * -	- * - BBL/D	- * - psi
Gas - * -	- * - Mscf/D	- * - min
		Gas/Liquid Interface Pressure
		- * - psi (g)
IPR Method	Vogel	Liquid Level Depth
PBHP/SBHP	- * -	5601.20 ft
Production Efficiency	0.0	Pump Intake Depth
		- * - ft
Oil 40 deg.API		Formation Depth
Water 1.05 Sp.Gr.H2O		5760.00 ft
Gas 0.89 Sp.Gr.AIR		
Acoustic Velocity 1107.29 ft/s		
Formation Submergence		
Total Gaseous Liquid Column HT (TVD)	- * - ft	
Equivalent Gas Free Liquid HT (TVD)	- * - ft	



Producing

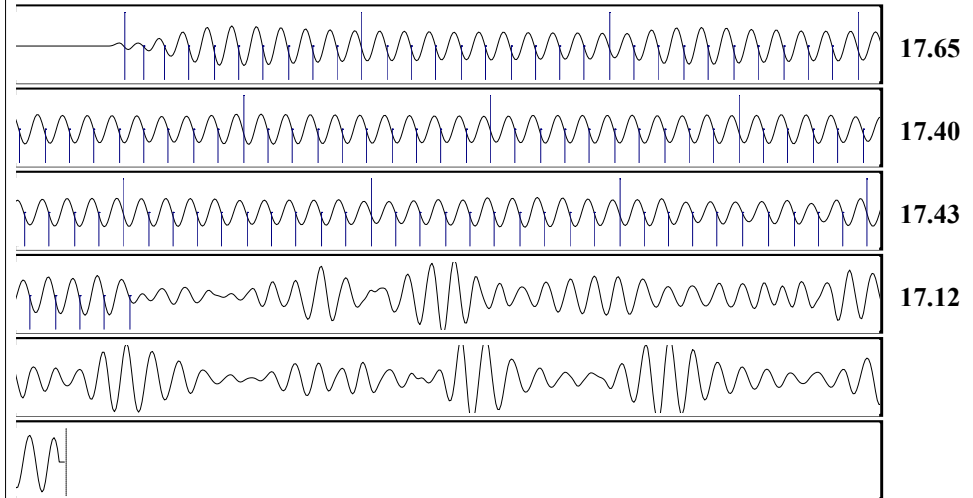
Annular Gas Flow - * - Mscf/D

% Liquid 100 %

Pump Intake - * - psi (g)

Producing BHP - * - psi (g)

Static BHP - * - psi (g)



Acoustic Velocity	1107.29 ft/s	Joints counted	105
Joints Per Second	17.4651 jts/sec	Joints to liquid level	176.694
Depth to liquid level	5601.2 ft	Filter Width	15.4216 19.4216
Automatic Collar Count	Yes	Time to 1st Collar	0.252 6.264

Conservation Division
District Office No. 1
210 E. Frontview, Suite A
Dodge City, KS 67801



Phone: 620-682-7933
<http://kcc.ks.gov/>

Andrew J. French, Chairperson
Dwight D. Keen, Commissioner
Annie Kuether, Commissioner

Laura Kelly, Governor

10/10/2024

Jose Reyes
American Warrior, Inc.
PO BOX 399
GARDEN CITY, KS 67846-0399

Re: Temporary Abandonment
API 15-025-20228-00-00
BARTH 1
NE/4 Sec.10-35S-22W
Clark County, Kansas

Dear Jose Reyes:

"Your temporary abandonment (TA) application for the well listed above has been approved. In accordance with K.A.R. 82-3-111 the TA status of this well will expire 10/10/2025.

- * If you return this well to service or plug it, please notify the District Office.
- * If you sell this well you are required to file a Transfer of Operator form, T-1.
- * If the well will remain temporarily abandoned, you must submit a new TA application, CP-111, before 10/10/2025.

You may contact me at the number above if you have questions.

Very truly yours,

Michael Maier"