

KANSAS CORPORATION COMMISSION
OIL & GAS CONSERVATION DIVISION

TEMPORARY ABANDONMENT WELL APPLICATION

OPERATOR: License#
Name:
Address 1:
Address 2:
City: State: Zip:
Contact Person:
Phone:
Contact Person Email:
Field Contact Person:
Field Contact Person Phone:

API No. 15-
Spot Description:
Sec. Twp. S. R.
GPS Location: Lat: Long:
Datum: NAD27 NAD83 WGS84
County: Elevation:
Lease Name: Well #:
Well Type: Oil Gas OG WSW Other:
SWD Permit #: ENHR Permit #:
Gas Storage Permit #:
Spud Date: Date Shut-In:

Table with 7 columns: Conductor, Surface, Production, Intermediate, Liner, Tubing. Rows include Size, Setting Depth, Amount of Cement, Top of Cement, Bottom of Cement.

Casing Fluid Level from Surface: How Determined? Date:
Casing Squeeze(s): to w / sacks of cement, to w / sacks of cement. Date:
Do you have a valid Oil & Gas Lease? Yes No
Depth and Type: Junk in Hole at Tools in Hole at Casing Leaks: Yes No Depth of casing leak(s):
Type Completion: ALT. I ALT. II Depth of: DV Tool: w / sacks of cement Port Collar: w / sack of cement
Packer Type: Size: Inch Set at: Feet
Total Depth: Plug Back Depth: Plug Back Method:

Geological Date:

Table with 4 columns: Formation Name, Formation Top, Formation Base, Completion Information. Rows 1 and 2.

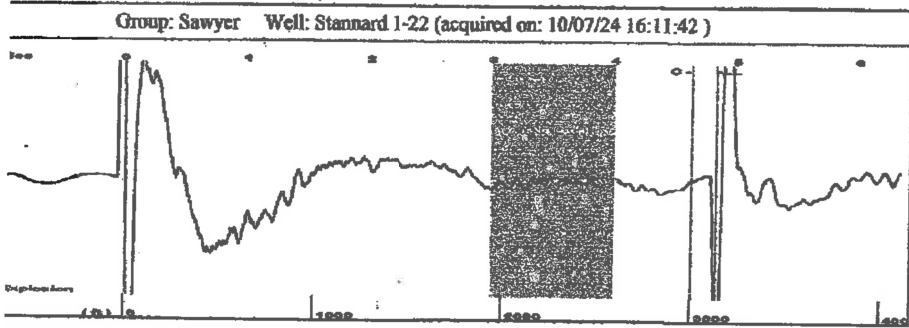
UNDER PENALTY OF PERJURY I HEREBY ATTEST THAT THE INFORMATION CONTAINED HEREIN IS TRUE AND CORRECT TO THE BEST OF MY KNOWLEDGE

Submitted Electronically

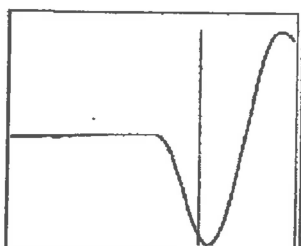
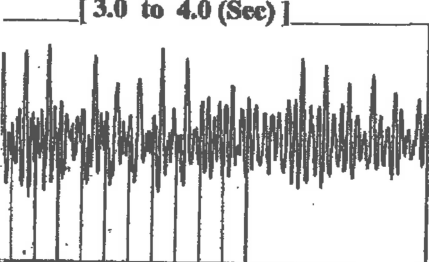
Do NOT Write in This Space - KCC USE ONLY
Date Tested: Results: Date Plugged: Date Repaired: Date Put Back in Service:
Review Completed by: Comments:
TA Approved: Yes Denied Date:

Mail to the Appropriate KCC Conservation Office:

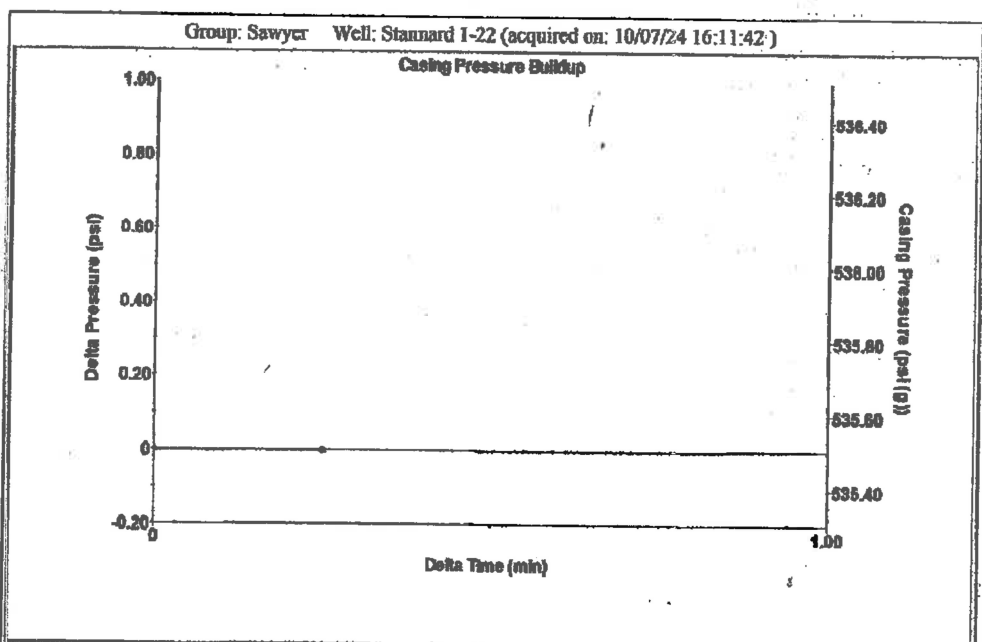
Table with 3 columns: District Office #, Address, Phone. Rows 1-4.



Type High Pass Automatic Collar Count Yes Time 4.828 sec  
 Acoustic Velocity 1277.92 ft/s Manual JTS/sec 20.8333 Joints 102.156 Jts  
 Depth 3133.14 ft



Analysis Method: Automatic



Change in Pressure -0.00 psi PT13440  
 Range 0 - ? psi  
 Change in Time 0.25 min

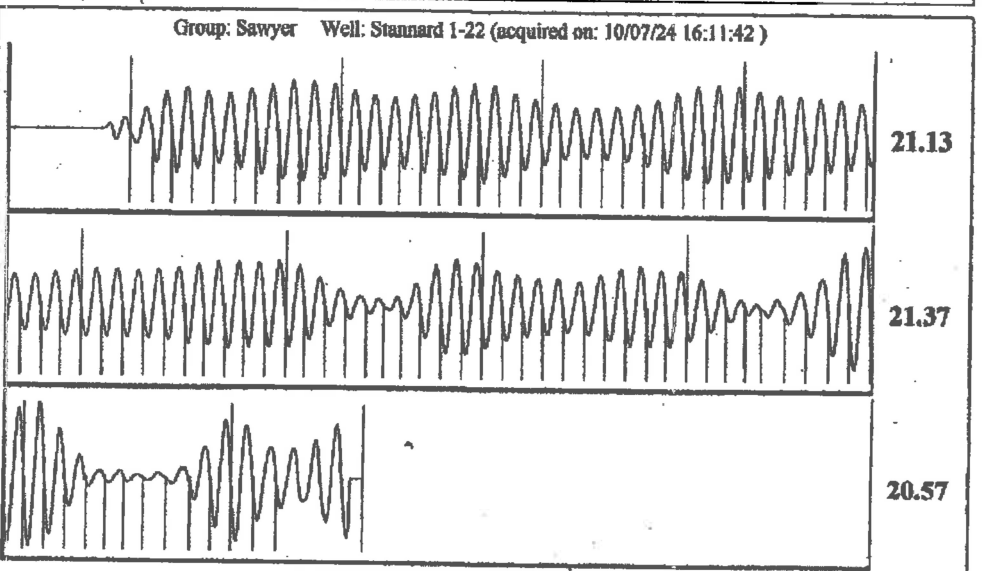
Group: Sawyer Well: Stannard 1-22 (acquired on: 10/07/24 16:11:42)

Production	Potential	Casing Pressure	Producing
Current	-*- BBL/D	535.5 psi (g)	
	-*- BBL/D	Casing Pressure Buildup	Annular
	-*- Mscf/D	-0.003 psi	Gas Flow
		0.25 min	0 Mscf/D
Method	Vogel	Gas/Liquid Interface Pressure	% Liquid
P/SBHP	-*-	578.4 psi (g)	100 %
Production Efficiency	0.0	Liquid Level Depth	
		3133.14 ft	
		Pump Intake Depth	
		4602.00 ft	
		Formation Depth	
		4488.00 ft	
Acoustic Velocity	1297.9 ft/s		
		Pump Intake	
		1046.0 psi (g)	
		Producing BHP	
		1010.5 psi (g)	
		Static BHP	
		-*- psi (g)	

Production Submergence

Gaseous Liquid Column HT (TVD)	1469 ft
Water Free Liquid HT (TVD)	1469 ft

Acoustic Test



Acoustic Velocity	1297.9 ft/s	Joints counted	92
Joints Per Second	21.1592 jts/sec	Joints to liquid level	102.156
Depth to liquid level	3133.14 ft	Filter Width	18.8333 22.8333
Automatic Collar Count	Yes	Time to 1st Collar	0.28 4.628

Conservation Division  
District Office No. 1  
210 E. Frontview, Suite A  
Dodge City, KS 67801



Phone: 620-682-7933  
<http://kcc.ks.gov/>

Andrew J. French, Chairperson  
Dwight D. Keen, Commissioner  
Annie Kuether, Commissioner

Laura Kelly, Governor

10/10/2024

Loveness Mpanje  
F. G. Holl Company L.L.C.  
9431 E CENTRAL STE 100  
WICHITA, KS 67206-2563

Re: Temporary Abandonment  
API 15-007-23031-00-03  
STANNARD 'OWWO' 1-22  
NW/4 Sec.22-30S-13W  
Barber County, Kansas

Dear Loveness Mpanje:

"Your temporary abandonment (TA) application for the well listed above has been approved. In accordance with K.A.R. 82-3-111 the TA status of this well will expire 10/10/2025.

- \* If you return this well to service or plug it, please notify the District Office.
- \* If you sell this well you are required to file a Transfer of Operator form, T-1.
- \* If the well will remain temporarily abandoned, you must submit a new TA application, CP-111, before 10/10/2025.

You may contact me at the number above if you have questions.

Very truly yours,

Michael Maier"