

KANSAS CORPORATION COMMISSION
OIL & GAS CONSERVATION DIVISION

TEMPORARY ABANDONMENT WELL APPLICATION

OPERATOR: License#
Name:
Address 1:
Address 2:
City: State: Zip:
Contact Person:
Phone:
Contact Person Email:
Field Contact Person:
Field Contact Person Phone:

API No. 15-
Spot Description:
Sec. Twp. S. R.
feet from N / S Line of Section
feet from E / W Line of Section
GPS Location: Lat: , Long:
Datum: NAD27 NAD83 WGS84
County: Elevation: GL KB
Lease Name: Well #:
Well Type: Oil Gas OG WSW Other:
SWD Permit #: ENHR Permit #:
Gas Storage Permit #:
Spud Date: Date Shut-In:

Table with 7 columns: Conductor, Surface, Production, Intermediate, Liner, Tubing. Rows include Size, Setting Depth, Amount of Cement, Top of Cement, Bottom of Cement.

Casing Fluid Level from Surface: How Determined? Date:
Casing Squeeze(s): to w / sacks of cement, to w / sacks of cement. Date:
Do you have a valid Oil & Gas Lease? Yes No
Depth and Type: Junk in Hole at Tools in Hole at Casing Leaks: Yes No Depth of casing leak(s):
Type Completion: ALT. I ALT. II Depth of: DV Tool: w / sacks of cement Port Collar: w / sack of cement
Packer Type: Size: Inch Set at: Feet
Total Depth: Plug Back Depth: Plug Back Method:

Geological Data:

Table with 4 columns: Formation Name, Formation Top, Formation Base, Completion Information. Rows 1 and 2.

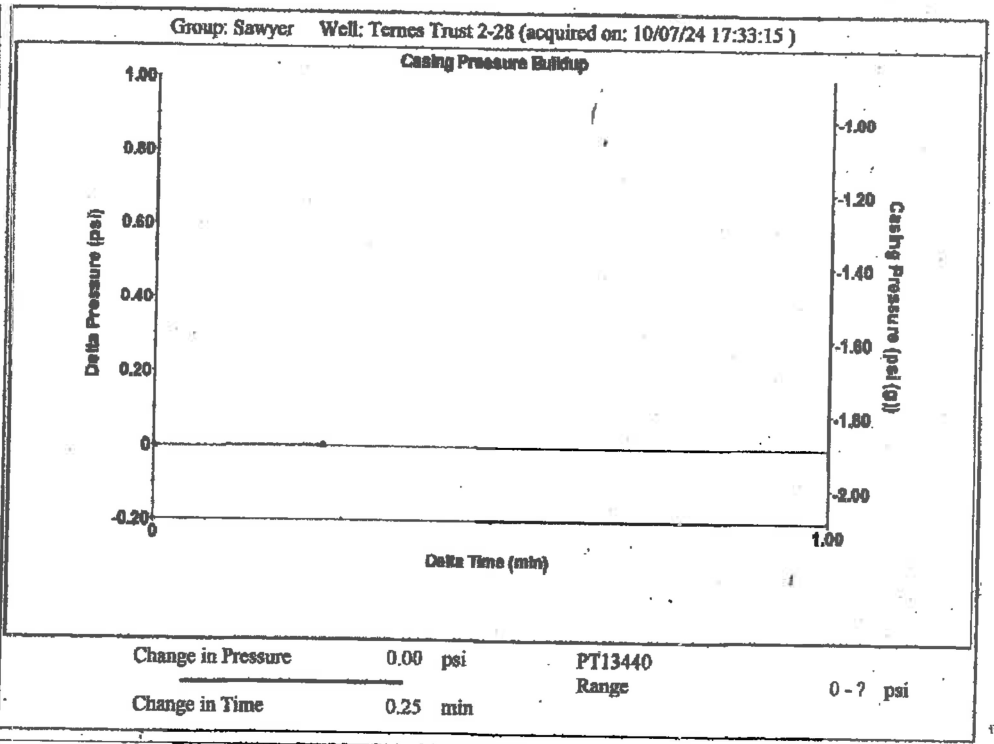
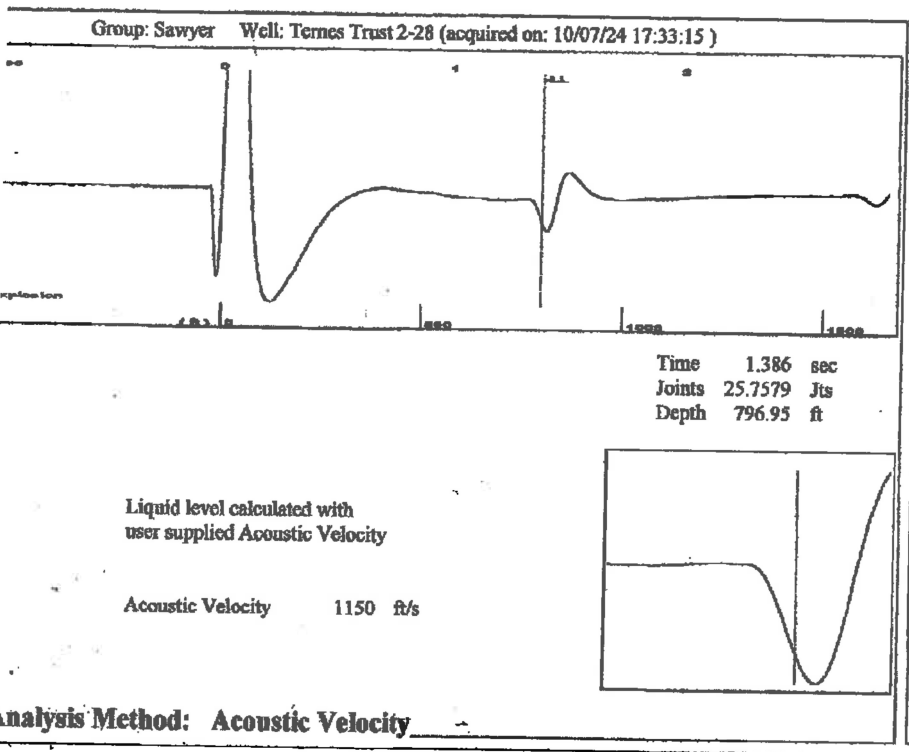
UNDER PENALTY OF PERJURY I HEREBY ATTEST THAT THE INFORMATION CONTAINED HEREIN IS TRUE AND CORRECT TO THE BEST OF MY KNOWLEDGE

Submitted Electronically

Do NOT Write in This Space - KCC USE ONLY
Date Tested: Results: Date Plugged: Date Repaired: Date Put Back in Service:
Review Completed by: Comments:
TA Approved: Yes Denied Date:

Mail to the Appropriate KCC Conservation Office:

Table with 3 columns: District Office, Address, Phone. Rows for District Office #1, #2, #3, #4.



Group: Sawyer Well: Ternes Trust 2-28 (acquired on: 10/07/24 17:33:15)

Current	Potential	Casing Pressure	Producing
-*-	-*- BBL/D	-1.9 psi (g)	
-*-	-*- BBL/D	Casing Pressure Buildup	Annular Gas Flow
-*-	-*- Mscf/D	0.002 psi	0 Mscf/D
		0.25 min	% Liquid
Method	Vogel	Gas/Liquid Interface Pressure	100 %
75BHP	-*-	-1.6 psi (g)	
Correction Efficiency	0.0		
40 deg API		Liquid Level Depth	
1.05 Sp.Gr.H2O		796.95 ft	
0.85 Sp.Gr.AIR		Pump Intake Depth	
		3939.00 ft	
Acoustic Velocity	1150 ft/s	Formation Depth	
		3959.00 ft	
Submergence		Pump Intake	
Gaseous Liquid Column HT (TVD)	3142 ft	1031.0 psi (g)	
Gas Free Liquid HT (TVD)	3142 ft	Producing BHP	
		1040.1 psi (g)	
		Static BHP	
		-*- psi (g)	

Group: Sawyer Well: Ternes Trust 2-28 (acquired on: 10/07/24 17:33:15)

Entered Acoustic Velocity for Liquid Level depth determination

Conservation Division
District Office No. 1
210 E. Frontview, Suite A
Dodge City, KS 67801



Phone: 620-682-7933
<http://kcc.ks.gov/>

Andrew J. French, Chairperson
Dwight D. Keen, Commissioner
Annie Kuether, Commissioner

Laura Kelly, Governor

10/10/2024

Loveness Manje
F. G. Holl Company L.L.C.
9431 E CENTRAL STE 100
WICHITA, KS 67206-2563

Re: Temporary Abandonment
API 15-007-23073-00-00
TERNES TRUST 2-28
NE/4 Sec.28-30S-14W
Barber County, Kansas

Dear Loveness Manje:

"Your temporary abandonment (TA) application for the well listed above has been approved. In accordance with K.A.R. 82-3-111 the TA status of this well will expire 07/10/2025.

- * If you return this well to service or plug it, please notify the District Office.
- * If you sell this well you are required to file a Transfer of Operator form, T-1.
- * If the well will remain temporarily abandoned, you must submit a new TA application, CP-111, before 07/10/2025.

You may contact me at the number above if you have questions.

Very truly yours,

Michael Maier"