

KANSAS CORPORATION COMMISSION
OIL & GAS CONSERVATION DIVISION

TEMPORARY ABANDONMENT WELL APPLICATION

OPERATOR: License#
Name:
Address 1:
Address 2:
City: State: Zip:
Contact Person:
Phone:
Contact Person Email:
Field Contact Person:
Field Contact Person Phone:

API No. 15-
Spot Description:
Sec. Twp. S. R.
feet from N / S Line of Section
feet from E / W Line of Section
GPS Location: Lat: , Long:
Datum: NAD27 NAD83 WGS84
County: Elevation: GL KB
Lease Name: Well #:
Well Type: (check one) Oil Gas OG WSW Other:
SWD Permit #: ENHR Permit #:
Gas Storage Permit #:
Spud Date: Date Shut-In:

Table with 7 columns: Conductor, Surface, Production, Intermediate, Liner, Tubing. Rows include Size, Setting Depth, Amount of Cement, Top of Cement, Bottom of Cement.

Casing Fluid Level from Surface: How Determined? Date:
Casing Squeeze(s): to w / sacks of cement, to w / sacks of cement. Date:
Do you have a valid Oil & Gas Lease? Yes No
Depth and Type: Junk in Hole at Tools in Hole at Casing Leaks: Yes No Depth of casing leak(s):
Type Completion: ALT. I ALT. II Depth of: DV Tool: w / sacks of cement Port Collar: w / sack of cement
Packer Type: Size: Inch Set at: Feet
Total Depth: Plug Back Depth: Plug Back Method:

Geological Date:

Table with 4 columns: Formation Name, Formation Top, Formation Base, Completion Information. Rows 1 and 2.

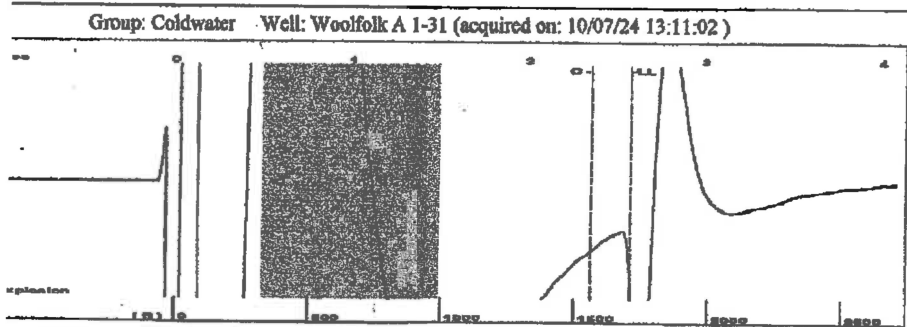
UNDER PENALTY OF PERJURY I HEREBY ATTEST THAT THE INFORMATION CONTAINED HEREIN IS TRUE AND CORRECT TO THE BEST OF MY KNOWLEDGE

Submitted Electronically

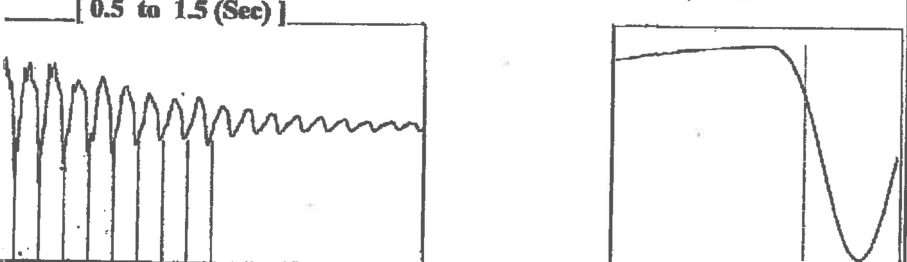
Do NOT Write in This Space - KCC USE ONLY
Date Tested: Results: Date Plugged: Date Repaired: Date Put Back in Service:
Review Completed by: Comments:
TA Approved: Yes Denied Date:

Mail to the Appropriate KCC Conservation Office:

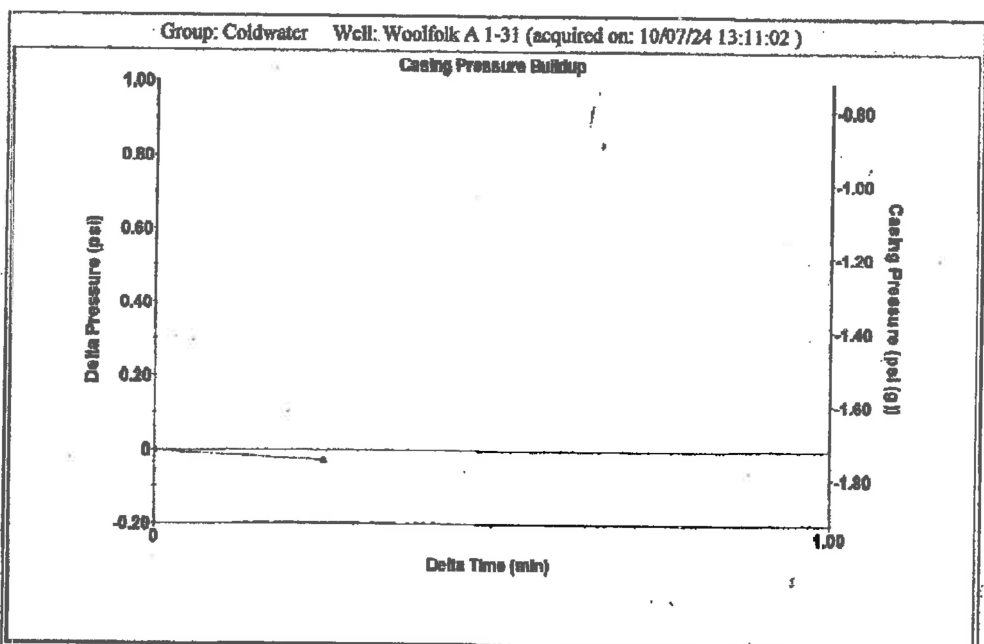
Table with 3 columns: District Office #, Address, Phone. Rows 1-4.



Type High Pass Automatic Collar Count Yes Time 2.578 sec  
 Acoustic Velocity 1294.02 ft/s Manual JTS/sec 19.9203 Joints 52.6122 Jts  
 Depth 1708.85 ft



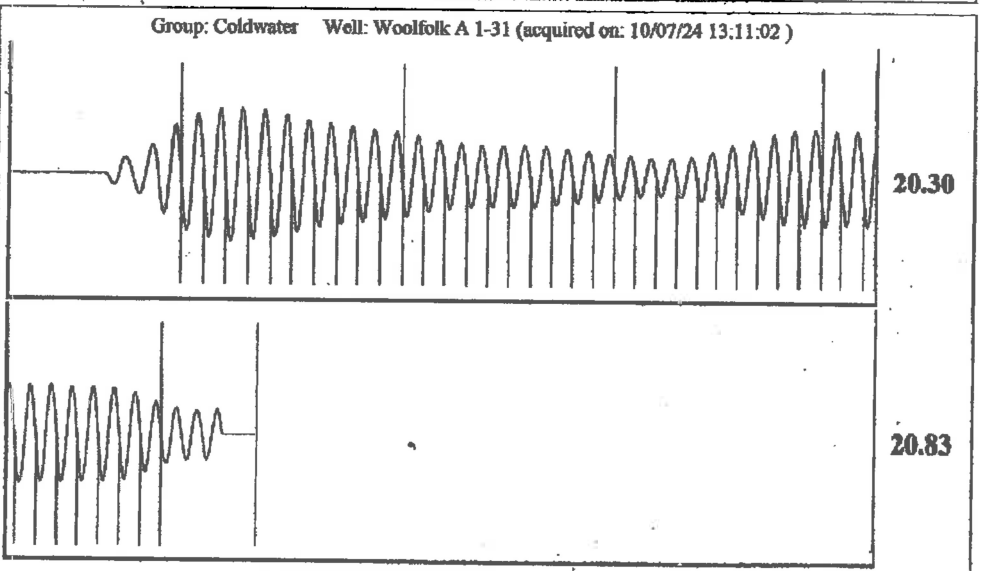
Analysis Method: Automatic



Change in Pressure -0.03 psi PT13440  
 Change in Time 0.25 min Range 0 - ? psi

Group: Coldwater Well: Woolfolk A 1-31 (acquired on: 10/07/24 13:11:02)

Potential - * - BBL/D - * - BBL/D - * - Mscf/D	Casing Pressure -1.7 psi (g) Casing Pressure Buildup -0.030 psi 0.25 min Gas/Liquid Interface Pressure -1.2 psi (g)	Producing Annular Gas Flow 0 Mscf/D % Liquid 100 %
Method /SBHP Casing Efficiency 0.0	Liquid Level Depth 1708.85 ft Pump Intake Depth 5220.00 ft Formation Depth 5293.00 ft	Pump Intake 1149.3 psi (g) Producing BHP 1182.4 psi (g) Static BHP - * - psi (g)
40 deg API 1.05 Sp.Gr.H2O 0.66 Sp.Gr.AIR	Vogal - * - 0.0	
Acoustic Velocity 1325.71 ft/s		
Casing Submergence Gaseous Liquid Column HT (TVD) 3511 ft Gaseous Free Liquid HT (TVD) 3511 ft		



Acoustic Velocity	1325.71 ft/s	Joints counted	40
Joints Per Second	20.4082 jts/sec	Joints to liquid level	52.6122
Depth to liquid level	1708.85 ft	Filter Width	17.9203
Automatic Collar Count	Yes	Time to 1st Collar	0.396

Conservation Division  
District Office No. 1  
210 E. Frontview, Suite A  
Dodge City, KS 67801



Phone: 620-682-7933  
<http://kcc.ks.gov/>

Andrew J. French, Chairperson  
Dwight D. Keen, Commissioner  
Annie Kuether, Commissioner

Laura Kelly, Governor

10/10/2024

Loveness Mpanje  
F. G. Holl Company L.L.C.  
9431 E CENTRAL STE 100  
WICHITA, KS 67206-2563

Re: Temporary Abandonment  
API 15-033-21587-00-00  
WOOLFOLK 'A' 1-31  
SE/4 Sec.31-34S-19W  
Comanche County, Kansas

Dear Loveness Mpanje:

"Your temporary abandonment (TA) application for the well listed above has been approved. In accordance with K.A.R. 82-3-111 the TA status of this well will expire 01/22/2025.

- \* If you return this well to service or plug it, please notify the District Office.
- \* If you sell this well you are required to file a Transfer of Operator form, T-1.
- \* If the well will remain temporarily abandoned, you must submit a new TA application, CP-111, before 01/22/2025.

You may contact me at the number above if you have questions.

Very truly yours,

Michael Maier"