

KANSAS CORPORATION COMMISSION
OIL & GAS CONSERVATION DIVISION

TEMPORARY ABANDONMENT WELL APPLICATION

OPERATOR: License#
Name:
Address 1:
Address 2:
City: State: Zip:
Contact Person:
Phone:
Contact Person Email:
Field Contact Person:
Field Contact Person Phone:

API No. 15-
Spot Description:
Sec. Twp. S. R.
feet from N / S Line of Section
feet from E / W Line of Section
GPS Location: Lat: , Long:
Datum: NAD27 NAD83 WGS84
County: Elevation: GL KB
Lease Name: Well #:
Well Type: (check one) Oil Gas OG WSW Other:
SWD Permit #: ENHR Permit #:
Gas Storage Permit #:
Spud Date: Date Shut-In:

Table with 7 columns: Conductor, Surface, Production, Intermediate, Liner, Tubing. Rows include Size, Setting Depth, Amount of Cement, Top of Cement, Bottom of Cement.

Casing Fluid Level from Surface: How Determined? Date:

Casing Squeeze(s): (top) to (bottom) w / sacks of cement, (top) to (bottom) w / sacks of cement. Date:

Do you have a valid Oil & Gas Lease? Yes No

Depth and Type: Junk in Hole at (depth) Tools in Hole at (depth) Casing Leaks: Yes No Depth of casing leak(s):

Type Completion: ALT. I ALT. II Depth of: DV Tool: (depth) w / sacks of cement Port Collar: (depth) w / sack of cement

Packer Type: Size: Inch Set at: Feet

Total Depth: Plug Back Depth: Plug Back Method:

Geological Date:

Table with 4 columns: Formation Name, Formation Top, Formation Base, Completion Information. Rows 1 and 2.

UNDER PENALTY OF PERJURY I HEREBY ATTEST THAT THE INFORMATION CONTAINED HEREIN IS TRUE AND CORRECT TO THE BEST OF MY KNOWLEDGE

Submitted Electronically

Form with fields: Do NOT Write in This Space - KCC USE ONLY, Date Tested, Results, Date Plugged, Date Repaired, Date Put Back in Service, Review Completed by, Comments, TA Approved: Yes Denied, Date.

Mail to the Appropriate KCC Conservation Office:

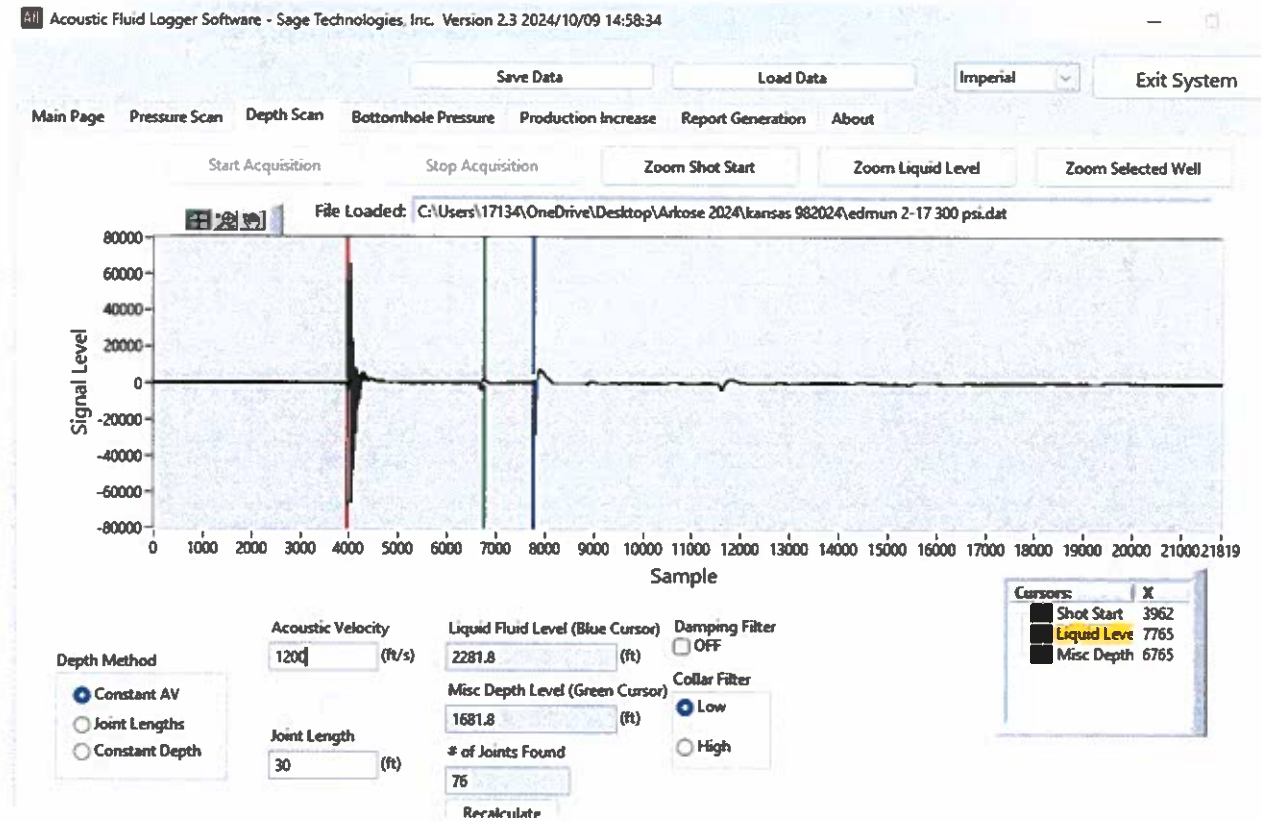
Table with 3 columns: District Office #, Address, Phone. Rows 1-4.

Edmun 2-17 300 psi on 10/8/2024

Fluid level at 2282 feet

API 15-071-20715

Coordinates (38.404111, -101.7565556)



Conservation Division
District Office No. 1
210 E. Frontview, Suite A
Dodge City, KS 67801



Phone: 620-682-7933
<http://kcc.ks.gov/>

Andrew J. French, Chairperson
Dwight D. Keen, Commissioner
Annie Kuether, Commissioner

Laura Kelly, Governor

10/17/2024

Doug Nester
Cycle Oil & Gas Ltd
205 S BAILEY STREET
ELECTRA, TX 76360-2373

Re: Temporary Abandonment
API 15-071-20715-00-00
EDMUN 2-17
NE/4 Sec.17-19S-40W
Greeley County, Kansas

Dear Doug Nester:

"Your temporary abandonment (TA) application for the well listed above has been approved. In accordance with K.A.R. 82-3-111 the TA status of this well will expire 10/17/2025.

- * If you return this well to service or plug it, please notify the District Office.
- * If you sell this well you are required to file a Transfer of Operator form, T-1.
- * If the well will remain temporarily abandoned, you must submit a new TA application, CP-111, before 10/17/2025.

You may contact me at the number above if you have questions.

Very truly yours,

Michael Maier"