

KANSAS CORPORATION COMMISSION
OIL & GAS CONSERVATION DIVISION

TEMPORARY ABANDONMENT WELL APPLICATION

OPERATOR: License#
Name:
Address 1:
Address 2:
City: State: Zip:
Contact Person:
Phone:
Contact Person Email:
Field Contact Person:
Field Contact Person Phone:

API No. 15-
Spot Description:
Sec. Twp. S. R.
GPS Location: Lat: Long:
Datum: NAD27 NAD83 WGS84
County: Elevation:
Lease Name: Well #:
Well Type: Oil Gas OG WSW Other:
SWD Permit #: ENHR Permit #:
Gas Storage Permit #:
Spud Date: Date Shut-In:

Table with 7 columns: Conductor, Surface, Production, Intermediate, Liner, Tubing. Rows include Size, Setting Depth, Amount of Cement, Top of Cement, Bottom of Cement.

Casing Fluid Level from Surface: How Determined? Date:
Casing Squeeze(s): to w / sacks of cement, to w / sacks of cement. Date:
Do you have a valid Oil & Gas Lease? Yes No
Depth and Type: Junk in Hole at Tools in Hole at Casing Leaks: Yes No Depth of casing leak(s):
Type Completion: ALT. I ALT. II Depth of: DV Tool: w / sacks of cement Port Collar: w / sack of cement
Packer Type: Size: Inch Set at: Feet
Total Depth: Plug Back Depth: Plug Back Method:

Geological Data:

Table with 4 columns: Formation Name, Formation Top, Formation Base, Completion Information. Rows 1 and 2.

UNDER PENALTY OF PERJURY I HEREBY ATTEST THAT THE INFORMATION CONTAINED HEREIN IS TRUE AND CORRECT TO THE BEST OF MY KNOWLEDGE

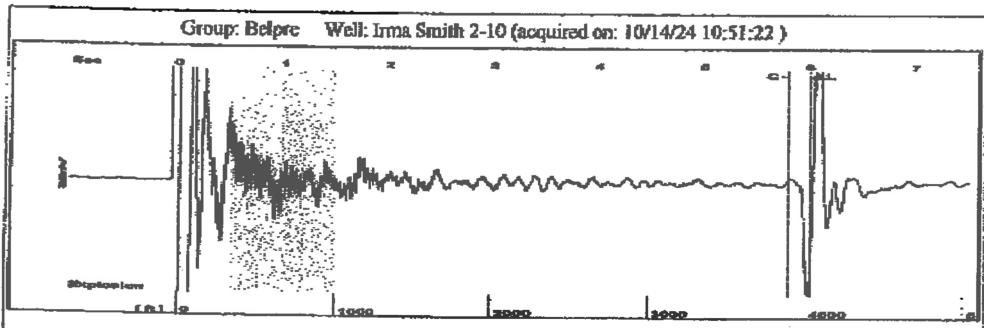
Submitted Electronically

Form with fields: Do NOT Write in This Space - KCC USE ONLY, Date Tested, Results, Date Plugged, Date Repaired, Date Put Back in Service, Review Completed by, Comments, TA Approved: Yes Denied, Date.

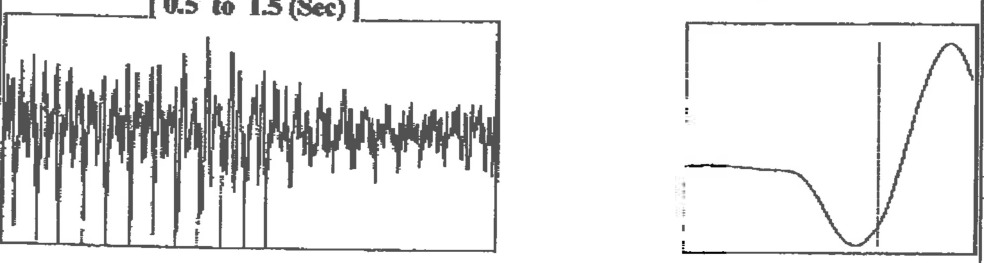
Mail to the Appropriate KCC Conservation Office:

Table with 2 columns: Office Address, Phone. Rows for KCC District Office #1, #2, #3, #4.

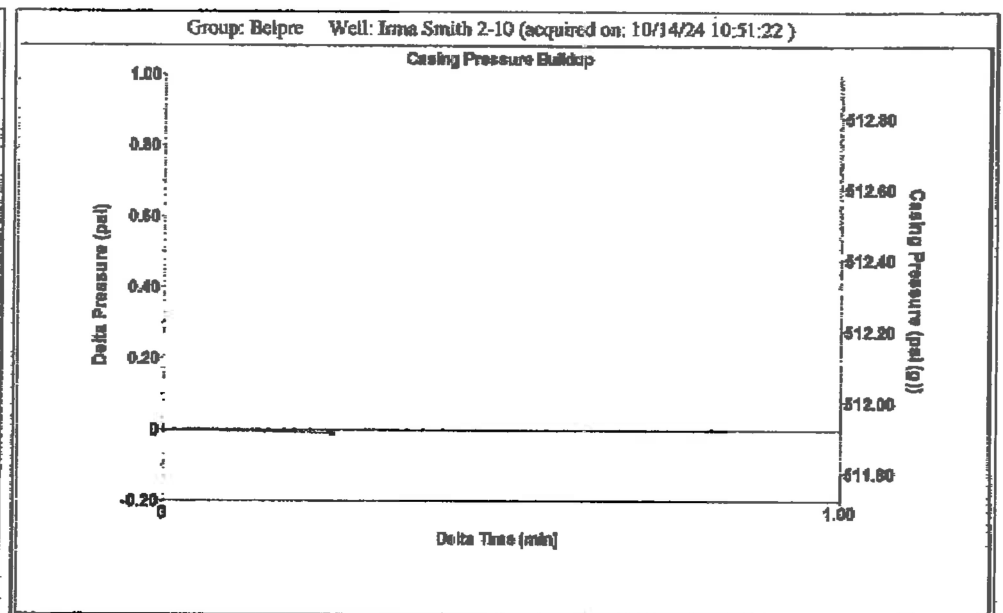
002



Filter Type High Pass Automatic Collar Count Yes Time 6.009 sec
 Manual Acoustic Velocity 1322 ft/s Manual JTS/sec 21.7865 Joints 132.814 Jts
 Depth 4029.58 ft




Analysis Method: Automatic



Change in Pressure -0.01 psi PTI 3440
 Change in Time 0.25 min Range 0 - 2 psi

ellinwood

Group: Belpre Well: Irma Smith 2-10 (acquired on: 10/14/24 10:51:22)

Production	Potential	Casing Pressure		Producing
Current	-* BBL/D	511.9 psi (g)		Annular Gas Flow
Oil -*	-* BBL/D	Casing Pressure Buildup		0 Msc/D
Water -*	-* Msc/D	-0.0 psi		% Liquid
Gas -*	-*	0.25 min	100 %	
IPR Method	Vogel	Gas/Liquid Interface Pressure	Liquid Level Depth	
PBHP/SBHP	-*	562.0 psi (g)	4029.58 ft	
Production Efficiency	0.0	Pump Intake Depth	4097.00 ft	
Oil 40 deg.API		Formation Depth	4018.00 ft	
Water 1.05 Sp.Gr.H2O				
Gas 0.63 Sp.Gr.AIR				
Acoustic Velocity	1341.18 ft/s			
Formation Submergence		Pump Intake	583.8 psi (g)	
Total Gaseous Liquid Column HT (TVD)	67 ft	Producing BHP	561.9 psi (g)	
Equivalent Gas Free Liquid HT (TVD)	67 ft	Static BHP	-* psi (g)	
Acoustic Test				

Group: Belpre Well: Irma Smith 2-10 (acquired on: 10/14/24 10:51:22)

21.96
22.15
22.17

Acoustic Velocity	1341.18 ft/s	Joints counted	119
Joints Per Second	22.1025 jts/sec	Joints to liquid level	132.814
Depth to liquid level	4029.58 ft	Filter Width	19.7865 23.7865
Automatic Collar Count	Yes	Time to 1st Collar	0.42 5.804

01/29/2021 06:42 FAX 16205842062

Conservation Division
District Office No. 1
210 E. Frontview, Suite A
Dodge City, KS 67801



Phone: 620-682-7933
<http://kcc.ks.gov/>

Andrew J. French, Chairperson
Dwight D. Keen, Commissioner
Annie Kuether, Commissioner

Laura Kelly, Governor

10/17/2024

Loveness Mpanje
F. G. Holl Company L.L.C.
9431 E CENTRAL STE 100
WICHITA, KS 67206-2563

Re: Temporary Abandonment
API 15-185-22739-00-00
IRMA SMITH 2-10
SW/4 Sec.10-24S-15W
Stafford County, Kansas

Dear Loveness Mpanje:

"Your temporary abandonment (TA) application for the well listed above has been approved. In accordance with K.A.R. 82-3-111 the TA status of this well will expire 10/17/2025.

- * If you return this well to service or plug it, please notify the District Office.
- * If you sell this well you are required to file a Transfer of Operator form, T-1.
- * If the well will remain temporarily abandoned, you must submit a new TA application, CP-111, before 10/17/2025.

You may contact me at the number above if you have questions.

Very truly yours,

Michael Maier"