

KANSAS CORPORATION COMMISSION
OIL & GAS CONSERVATION DIVISION

TEMPORARY ABANDONMENT WELL APPLICATION

OPERATOR: License#
Name:
Address 1:
Address 2:
City: State: Zip:
Contact Person:
Phone:
Contact Person Email:
Field Contact Person:
Field Contact Person Phone:

API No. 15-
Spot Description:
Sec. Twp. S. R.
GPS Location: Lat: Long:
Datum: NAD27 NAD83 WGS84
County: Elevation:
Lease Name: Well #:
Well Type: Oil Gas OG WSW Other:
SWD Permit #: ENHR Permit #:
Gas Storage Permit #:
Spud Date: Date Shut-In:

Table with 7 columns: Conductor, Surface, Production, Intermediate, Liner, Tubing. Rows include Size, Setting Depth, Amount of Cement, Top of Cement, Bottom of Cement.

Casing Fluid Level from Surface: How Determined? Date:
Casing Squeeze(s): to w / sacks of cement, to w / sacks of cement. Date:
Do you have a valid Oil & Gas Lease? Yes No
Depth and Type: Junk in Hole at Tools in Hole at Casing Leaks: Yes No Depth of casing leak(s):
Type Completion: ALT. I ALT. II Depth of: DV Tool: w / sacks of cement Port Collar: w / sack of cement
Packer Type: Size: Inch Set at: Feet
Total Depth: Plug Back Depth: Plug Back Method:

Geological Date:

Table with 4 columns: Formation Name, Formation Top, Formation Base, Completion Information. Rows 1 and 2.

UNDER PENALTY OF PERJURY I HEREBY ATTEST THAT THE INFORMATION CONTAINED HEREIN IS TRUE AND CORRECT TO THE BEST OF MY KNOWLEDGE

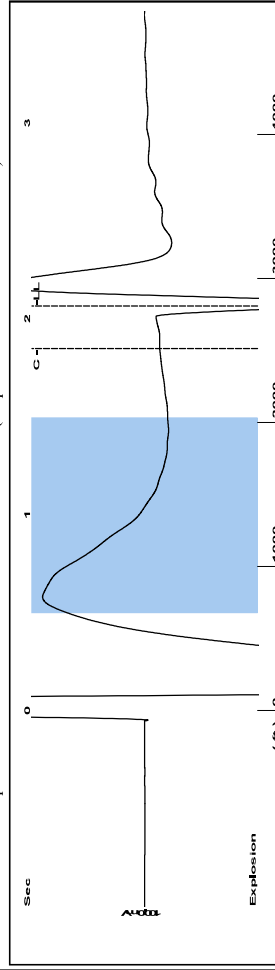
Submitted Electronically

Do NOT Write in This Space - KCC USE ONLY
Date Tested: Results: Date Plugged: Date Repaired: Date Put Back in Service:
Review Completed by: Comments:
TA Approved: Yes Denied Date:

Mail to the Appropriate KCC Conservation Office:

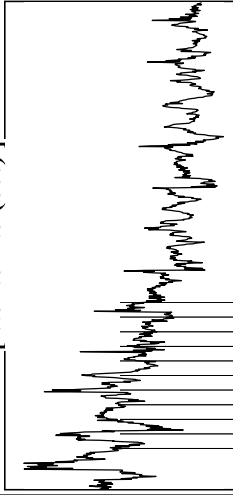
Table with 2 columns: Office Address, Phone. Rows for KCC District Office #1, #2, #3, #4.

Group: BURK ROYALTY Well: HAMANT B4 (acquired on: 10/15/24 15:26:04)



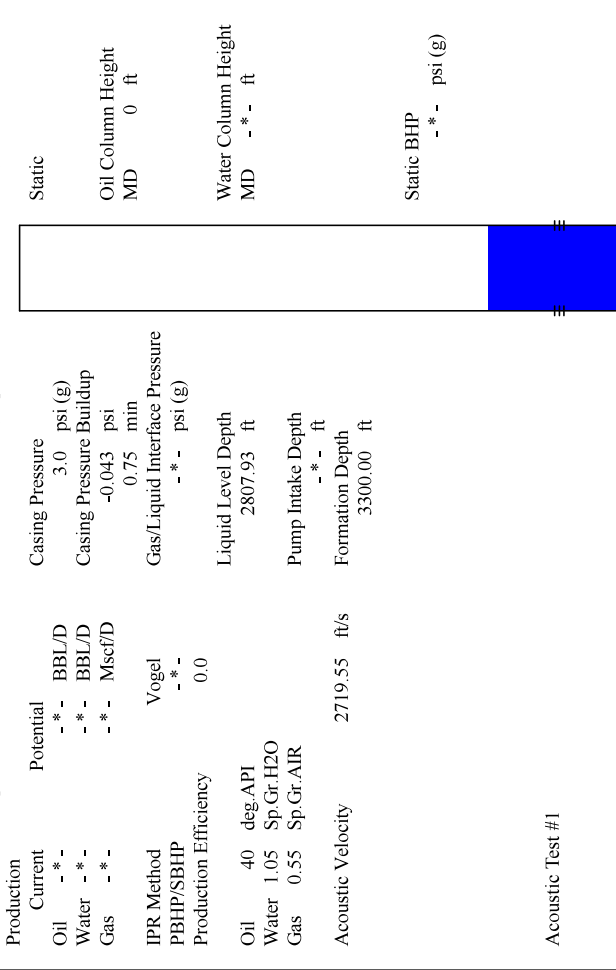
Filter Type High Pass Automatic Collar Count Yes Time 2.065 sec  
Manual Acoustic Veloc2666.67 ft/s Manual JTS/sec 33.3333 Jts  
Depth 2807.93 ft

| 0.5 to 1.5 (Sec) |



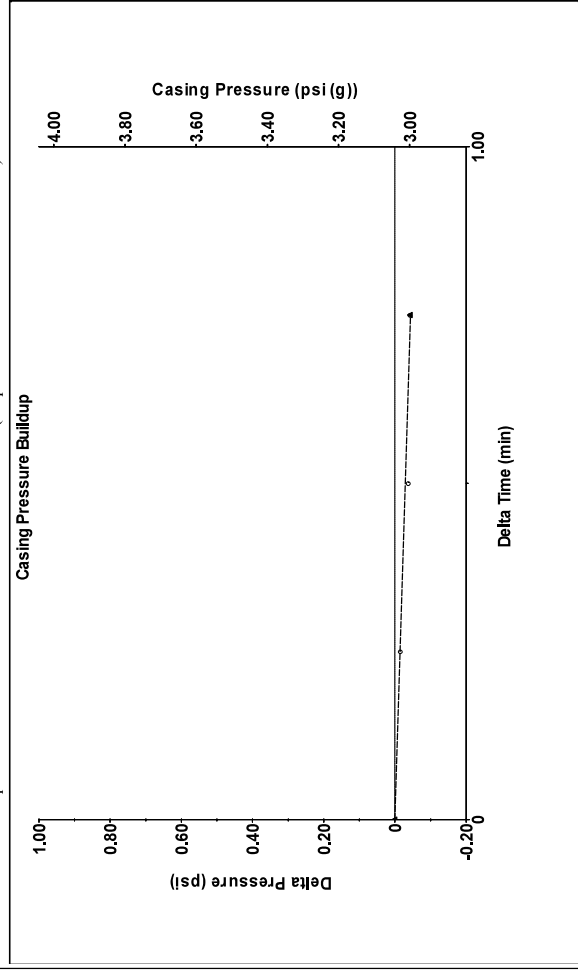
Analysis Method: Automatic

Group: BURK ROYALTY Well: HAMANT B4 (acquired on: 10/15/24 15:26:04)



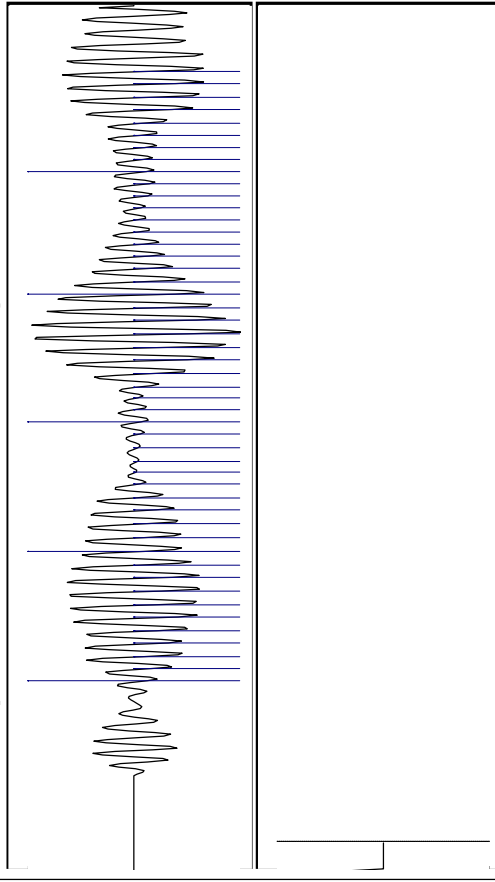
Acoustic Test #1

Group: BURK ROYALTY Well: HAMANT B4 (acquired on: 10/15/24 15:26:04)



Change in Pressure -0.04 psi PT14165  
Change in Time 0.75 min Range

Group: BURK ROYALTY Well: HAMANT B4 (acquired on: 10/15/24 15:26:04)



Acoustic Velocity 2719.55 ft/s Joints counted 48  
Joints Per Second 33.9943 jts/sec Joints to liquid level 70.1983  
Depth to liquid level 2807.93 ft Filter Width 35.3333  
Automatic Collar Count Yes Time to 1st Collar 1.848