

KANSAS CORPORATION COMMISSION
OIL & GAS CONSERVATION DIVISION

TEMPORARY ABANDONMENT WELL APPLICATION

OPERATOR: License#
Name:
Address 1:
Address 2:
City: State: Zip:
Contact Person:
Phone:
Contact Person Email:
Field Contact Person:
Field Contact Person Phone:

API No. 15-
Spot Description:
Sec. Twp. S. R.
feet from N / S Line of Section
feet from E / W Line of Section
GPS Location: Lat: , Long:
Datum: NAD27 NAD83 WGS84
County: Elevation: GL KB
Lease Name: Well #:
Well Type: (check one) Oil Gas OG WSW Other:
SWD Permit #: ENHR Permit #:
Gas Storage Permit #:
Spud Date: Date Shut-In:

Table with 7 columns: Conductor, Surface, Production, Intermediate, Liner, Tubing. Rows include Size, Setting Depth, Amount of Cement, Top of Cement, Bottom of Cement.

Casing Fluid Level from Surface: How Determined? Date:
Casing Squeeze(s): to w / sacks of cement, to w / sacks of cement. Date:
Do you have a valid Oil & Gas Lease? Yes No
Depth and Type: Junk in Hole at Tools in Hole at Casing Leaks: Yes No Depth of casing leak(s):
Type Completion: ALT. I ALT. II Depth of: DV Tool: w / sacks of cement Port Collar: w / sack of cement
Packer Type: Size: Inch Set at: Feet
Total Depth: Plug Back Depth: Plug Back Method:

Geological Date:

Table with 4 columns: Formation Name, Formation Top, Formation Base, Completion Information. Rows 1 and 2.

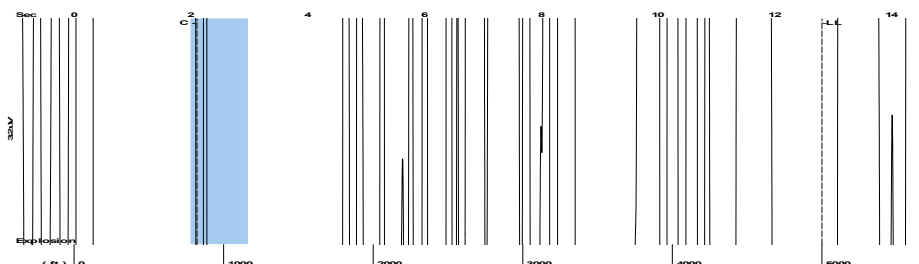
UNDER PENALTY OF PERJURY I HEREBY ATTEST THAT THE INFORMATION CONTAINED HEREIN IS TRUE AND CORRECT TO THE BEST OF MY KNOWLEDGE

Submitted Electronically

Do NOT Write in This Space - KCC USE ONLY
Date Tested: Results: Date Plugged: Date Repaired: Date Put Back in Service:
Review Completed by: Comments:
TA Approved: Yes Denied Date:

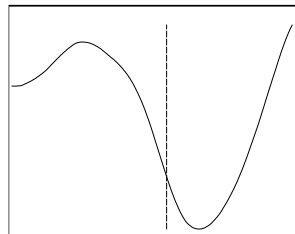
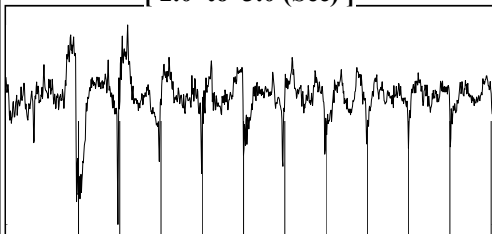
Mail to the Appropriate KCC Conservation Office:

Table with 3 columns: District Office, Address, Phone. Rows for District Office #1, #2, #3, #4.



Filter Type High Pass Automatic Collar Count Yes Time 12.799 sec  
 Manual Acoustic Veloc 747.642 ft/s Manual JTS/sec 11.7925 Joints 157.734 Jts  
 Depth 5000.17 ft

[ 2.0 to 3.0 (Sec) ]



**Analysis Method: Automatic**

NO PRESSURE DATA AVAILABLE

Change in Pressure 0.00 psi PT13682  
 Range 0 - ? psi  
 Change in Time 0.00 min

<b>Production</b>	<b>Potential</b>	<b>Casing Pressure</b>
Oil - * -	- * - BBL/D	-14.7 psi (g)
Water - * -	- * - BBL/D	Casing Pressure Buildup
Gas - * -	- * - Mscf/D	- * - psi
		- * - min
<b>IPR Method</b>	<b>Vogel</b>	<b>Gas/Liquid Interface Pressure</b>
PBHP/SBHP - * -	- * -	- * - psi (g)
Production Efficiency 0.0		
<b>Oil</b> 40 deg.API		<b>Liquid Level Depth</b>
<b>Water</b> 1.05 Sp.Gr.H2O		5000.17 ft
<b>Gas</b> 0.70 Sp.Gr.AIR		<b>Pump Intake Depth</b>
		- * - ft
<b>Acoustic Velocity</b> 781.338 ft/s		<b>Formation Depth</b>
		6261.00 ft
<b>Formation Submergence</b>		
Total Gaseous Liquid Column HT (TVD) - * - ft		
Equivalent Gas Free Liquid HT (TVD) - * - ft		

**Producing**

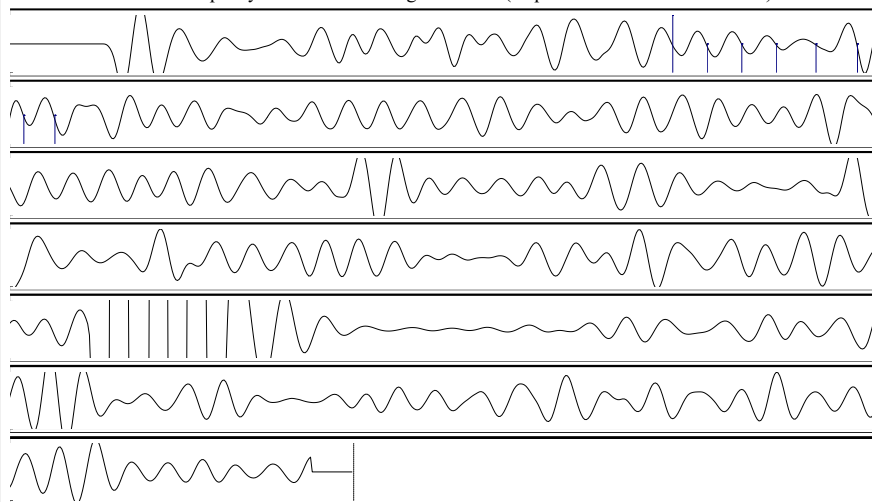
Annular Gas Flow - \* - Mscf/D

% Liquid 100 %

**Pump Intake** - \* - psi (g)

**Producing BHP** - \* - psi (g)

**Static BHP** - \* - psi (g)



Acoustic Velocity	781.338 ft/s	Joints counted	7
Joints Per Second	12.3239 jts/sec	Joints to liquid level	157.734
Depth to liquid level	5000.17 ft	Filter Width	9.79245 13.7925
Automatic Collar Count	Yes	Time to 1st Collar	1.536 2.104

Conservation Division  
District Office No. 1  
210 E. Frontview, Suite A  
Dodge City, KS 67801



Phone: 620-682-7933  
<http://kcc.ks.gov/>

Andrew J. French, Chairperson  
Dwight D. Keen, Commissioner  
Annie Kuether, Commissioner

Laura Kelly, Governor

10/24/2024

Octavio Morales  
American Warrior, Inc.  
PO BOX 399  
GARDEN CITY, KS 67846-0399

Re: Temporary Abandonment  
API 15-119-21459-00-00  
LANGHOFER 1-23  
SW/4 Sec.23-33S-30W  
Meade County, Kansas

Dear Octavio Morales:

"Your temporary abandonment (TA) application for the well listed above has been approved. In accordance with K.A.R. 82-3-111 the TA status of this well will expire 10/24/2025.

- \* If you return this well to service or plug it, please notify the District Office.
- \* If you sell this well you are required to file a Transfer of Operator form, T-1.
- \* If the well will remain temporarily abandoned, you must submit a new TA application, CP-111, before 10/24/2025.

You may contact me at the number above if you have questions.

Very truly yours,

Michael Maier"