

KANSAS CORPORATION COMMISSION
OIL & GAS CONSERVATION DIVISION

TEMPORARY ABANDONMENT WELL APPLICATION

OPERATOR: License#
Name:
Address 1:
Address 2:
City: State: Zip:
Contact Person:
Phone:
Contact Person Email:
Field Contact Person:
Field Contact Person Phone:

API No. 15-
Spot Description:
Sec. Twp. S. R.
GPS Location: Lat: Long:
Datum: NAD27 NAD83 WGS84
County: Elevation:
Lease Name: Well #:
Well Type: Oil Gas OG WSW Other:
SWD Permit #: ENHR Permit #:
Gas Storage Permit #:
Spud Date: Date Shut-In:

Table with 7 columns: Conductor, Surface, Production, Intermediate, Liner, Tubing. Rows include Size, Setting Depth, Amount of Cement, Top of Cement, Bottom of Cement.

Casing Fluid Level from Surface: How Determined? Date:
Casing Squeeze(s): to w / sacks of cement, to w / sacks of cement. Date:
Do you have a valid Oil & Gas Lease? Yes No
Depth and Type: Junk in Hole at Tools in Hole at Casing Leaks: Yes No Depth of casing leak(s):
Type Completion: ALT. I ALT. II Depth of: DV Tool: w / sacks of cement Port Collar: w / sack of cement
Packer Type: Size: Inch Set at: Feet
Total Depth: Plug Back Depth: Plug Back Method:

Geological Date:

Table with 4 columns: Formation Name, Formation Top, Formation Base, Completion Information. Rows 1 and 2.

UNDER PENALTY OF PERJURY I HEREBY ATTEST THAT THE INFORMATION CONTAINED HEREIN IS TRUE AND CORRECT TO THE BEST OF MY KNOWLEDGE

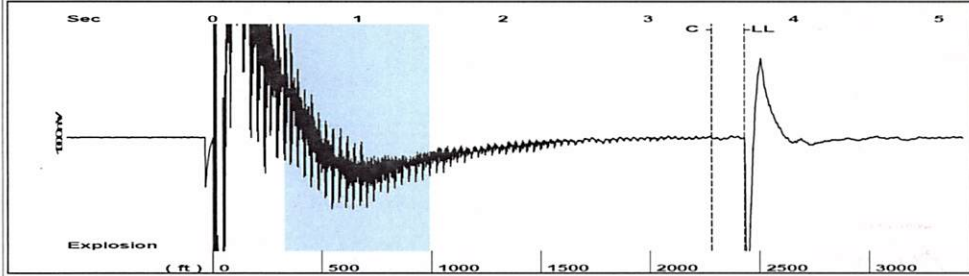
Submitted Electronically

Do NOT Write in This Space - KCC USE ONLY
Date Tested: Results: Date Plugged: Date Repaired: Date Put Back in Service:
Review Completed by: Comments:
TA Approved: Yes Denied Date:

Mail to the Appropriate KCC Conservation Office:

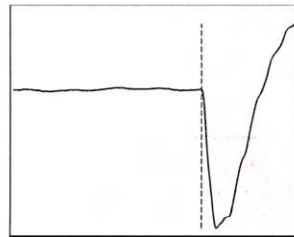
Table with 3 columns: District Office, Address, Phone. Rows for District Office #1, #2, #3, #4.

Group: 3G Production, LLC Well: Lonker (acquired on: 10/17/24 09:38:08 )



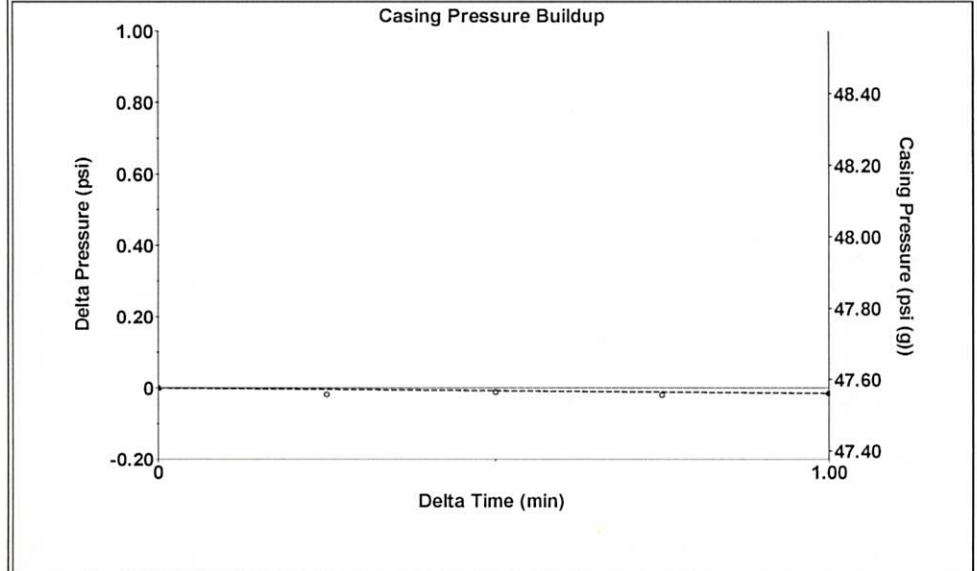
Filter Type High Pass Automatic Collar Count Yes Time 3.659 sec  
 Manual Acoustic Velo 1323.59 ft/s Manual JTS/sec 20.8768 Joints 76.6283 Jts  
 Depth 2429.12 ft

[ 0.5 to 1.5 (Sec) ]



Analysis Method: Automatic

Group: 3G Production, LLC Well: Lonker (acquired on: 10/17/24 09:38:08 )

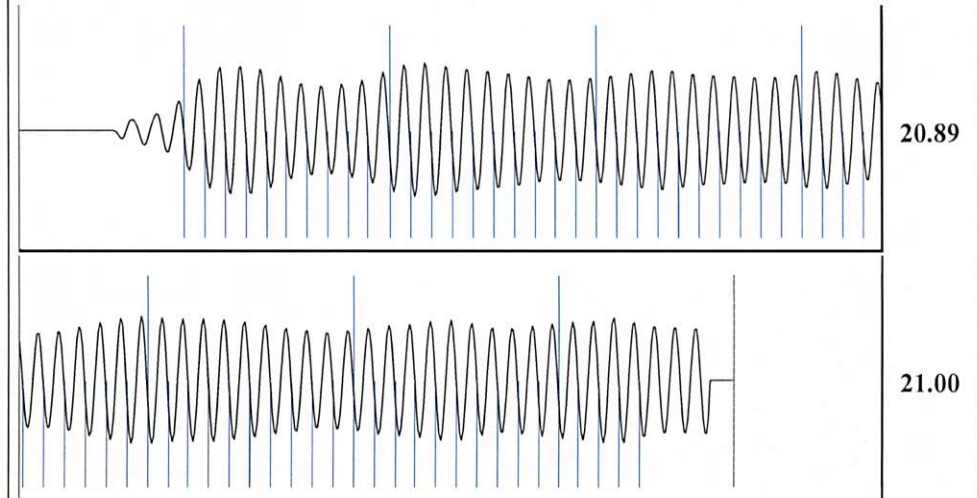


Change in Pressure -0.01 psi PT 15469  
 Change in Time 1.00 min Range 0 - ? psi

Group: 3G Production, LLC Well: Lonker (acquired on: 10/17/24 09:38:08 )

Production Current	Potential	Casing Pressure	Producing
Oil - * -	- * - BBL/D	47.6 psi (g)	Annular Gas Flow 0 Mscf/D
Water - * -	- * - BBL/D	Casing Pressure Buildup -0.0 psi	% Liquid 100 %
Gas - * -	- * - Mscf/D	1.00 min	
IPR Method	Vogel	Gas/Liquid Interface Pressure 51.1 psi (g)	
PBHP/SBHP	- * -	Liquid Level Depth 2429.12 ft	
Production Efficiency 0.0		Pump Intake Depth 4420.00 ft	
Oil 40 deg.API		Formation Depth 4415.00 ft	
Water 1.05 Sp.Gr.H2O		Pump Intake 711.5 psi (g)	
Gas 0.66 Sp.Gr.AIR		Producing BHP 709.9 psi (g)	
Acoustic Velocity 1327.75 ft/s		Static BHP - * - psi (g)	
Formation Submergence			
Total Gaseous Liquid Column HT (TVD) 1991 ft			
Equivalent Gas Free Liquid HT (TVD) 1991 ft			
Acoustic Test			

Group: 3G Production, LLC Well: Lonker (acquired on: 10/17/24 09:38:08 )



Acoustic Velocity 1327.75 ft/s Joints counted 64  
 Joints Per Second 20.9424 jts/sec Joints to liquid level 76.6283  
 Depth to liquid level 2429.12 ft Filter Width 18.8768 22.8768  
 Automatic Collar Count Yes Time to 1st Collar 0.38 3.436

Conservation Division  
District Office No. 1  
210 E. Frontview, Suite A  
Dodge City, KS 67801



Phone: 620-682-7933  
<http://kcc.ks.gov/>

Andrew J. French, Chairperson  
Dwight D. Keen, Commissioner  
Annie Kuether, Commissioner

Laura Kelly, Governor

10/24/2024

Kenneth C Gates  
3G Production, LLC  
10387 NE SR 61  
PO BOX 847  
PRATT, KS 67124-0847

Re: Temporary Abandonment  
API 15-007-21681-00-00  
LONKER-HARRELL 1  
NW/4 Sec.14-32S-13W  
Barber County, Kansas

Dear Kenneth C Gates:

"Your temporary abandonment (TA) application for the well listed above has been approved. In accordance with K.A.R. 82-3-111 the TA status of this well will expire 10/24/2025.

- \* If you return this well to service or plug it, please notify the District Office.
- \* If you sell this well you are required to file a Transfer of Operator form, T-1.
- \* If the well will remain temporarily abandoned, you must submit a new TA application, CP-111, before 10/24/2025.

You may contact me at the number above if you have questions.

Very truly yours,

Michael Maier"