

KANSAS CORPORATION COMMISSION
OIL & GAS CONSERVATION DIVISION

TEMPORARY ABANDONMENT WELL APPLICATION

All blanks must be complete

OPERATOR: License# _____
 Name: _____
 Address 1: _____
 Address 2: _____
 City: _____ State: _____ Zip: _____ + _____
 Contact Person: _____
 Phone: (_____) _____
 Contact Person Email: _____
 Field Contact Person: _____
 Field Contact Person Phone: (_____) _____

API No. 15- _____
 Spot Description: _____
 _____ - _____ - _____ - _____ Sec. _____ Twp. _____ S. R. _____ E W
 _____ feet from N / S Line of Section
 _____ feet from E / W Line of Section
 GPS Location: Lat: _____, Long: _____
(e.g. xx.xxxxx) (e.g. -xxx.xxxxx)
 Datum: NAD27 NAD83 WGS84
 County: _____ Elevation: _____ GL KB
 Lease Name: _____ Well #: _____
 Well Type: (check one) Oil Gas OG WSW Other: _____
 SWD Permit #: _____ ENHR Permit #: _____
 Gas Storage Permit #: _____
 Spud Date: _____ Date Shut-In: _____

	Conductor	Surface	Production	Intermediate	Liner	Tubing
Size						
Setting Depth						
Amount of Cement						
Top of Cement						
Bottom of Cement						

Casing Fluid Level from Surface: _____ How Determined? _____ Date: _____
 Casing Squeeze(s): _____ to _____ w / _____ sacks of cement, _____ to _____ w / _____ sacks of cement. Date: _____
(top) (bottom) (top) (bottom)
 Do you have a valid Oil & Gas Lease? Yes No
 Depth and Type: Junk in Hole at _____ Tools in Hole at _____ Casing Leaks: Yes No Depth of casing leak(s): _____
(depth) (depth)
 Type Completion: ALT. I ALT. II Depth of: DV Tool: _____ w / _____ sacks of cement Port Collar: _____ w / _____ sack of cement
(depth) (depth)
 Packer Type: _____ Size: _____ Inch Set at: _____ Feet
 Total Depth: _____ Plug Back Depth: _____ Plug Back Method: _____

Geological Data:

Formation Name	Formation Top	Formation Base	Completion Information
1. _____	At: _____	to _____ Feet	Perforation Interval _____ to _____ Feet or Open Hole Interval _____ to _____ Feet
2. _____	At: _____	to _____ Feet	Perforation Interval _____ to _____ Feet or Open Hole Interval _____ to _____ Feet

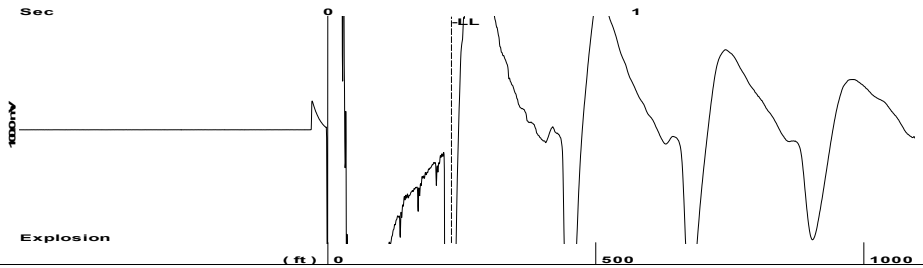
UNDER PENALTY OF PERJURY I HEREBY ATTEST THAT THE INFORMATION CONTAINED HEREIN IS TRUE AND CORRECT TO THE BEST OF MY KNOWLEDGE

Submitted Electronically

Do NOT Write in This Space - KCC USE ONLY	Date Tested: _____	Results: _____	Date Plugged: _____	Date Repaired: _____	Date Put Back in Service: _____
	Review Completed by: _____ Comments: _____				
TA Approved: <input type="checkbox"/> Yes <input type="checkbox"/> Denied Date: _____					

Mail to the Appropriate KCC Conservation Office:

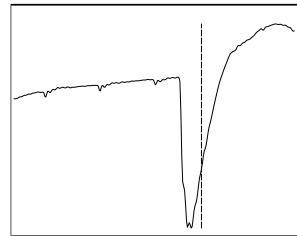
	KCC District Office #1 - 210 E. Frontview, Suite A, Dodge City, KS 67801	Phone 620.682.7933
	KCC District Office #2 - 3450 N. Rock Road, Building 600, Suite 601, Wichita, KS 67226	Phone 316.337.7400
	KCC District Office #3 - 137 E. 21st St., Chanute, KS 66720	Phone 620.902.6450
	KCC District Office #4 - 2301 E. 13th Street, Hays, KS 67601-2651	Phone 785.261.6250



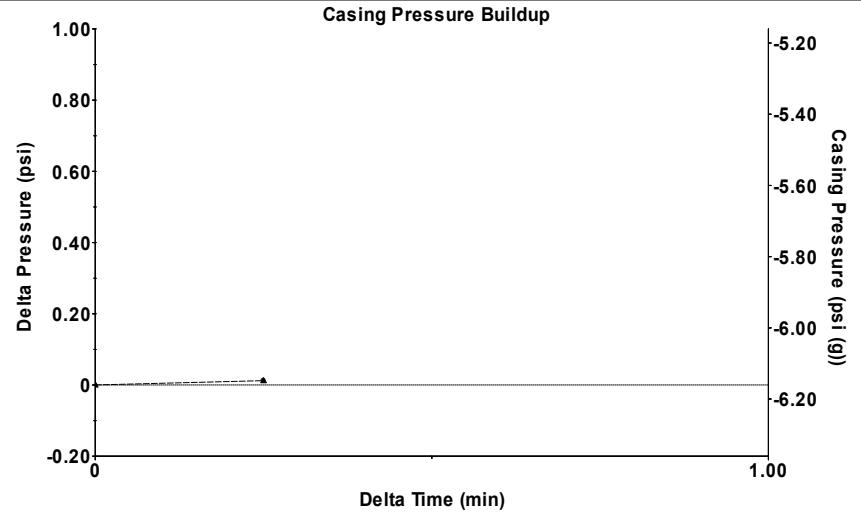
Time 0.401 sec
 Joints 7.23259 Jts
 Depth 230.58 ft

Liquid level calculated with user supplied Acoustic Velocity

Acoustic Velocity 1150 ft/s

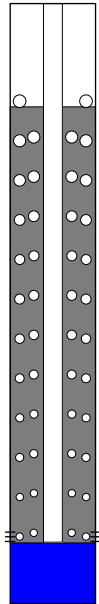


Analysis Method: Acoustic Velocity



Change in Pressure 0.01 psi PT 12349
 Change in Time 0.25 min Range 0 - ? psi

Production Current	Potential	Casing Pressure	-6.2 psi (g)	Producing
Oil - *-	- *- BBL/D	Casing Pressure Buildup	0.012 psi	Annular Gas Flow
Water - *-	- *- BBL/D		0.25 min	0 Mscf/D
Gas - *-	- *- Mscf/D	Gas/Liquid Interface Pressure	-6.1 psi (g)	% Liquid
				100 %
IPR Method	Vogel	Liquid Level Depth	230.58 ft	
PBHP/SBHP	- *-	Pump Intake Depth	2550.00 ft	
Production Efficiency	0.0	Formation Depth	2520.00 ft	
Oil 34 deg.API				
Water 1.05 Sp.Gr.H2O				
Gas 0.85 Sp.Gr.AIR				
Acoustic Velocity	1150 ft/s			
Formation Submergence				
Total Gaseous Liquid Column HT (TVD)		2319 ft		Pump Intake
Equivalent Gas Free Liquid HT (TVD)		2319 ft		805.9 psi (g)
				Producing BHP
				795.9 psi (g)
				Static BHP
				- *- psi (g)
Acoustic Test				



Entered Acoustic Velocity for Liquid Level depth determination

Conservation Division
District Office No. 2
3450 N. Rock Road
Building 600, Suite 601
Wichita, KS 67226



Phone: 316-337-7400
<http://kcc.ks.gov/>

Andrew J. French, Chairperson
Dwight D. Keen, Commissioner
Annie Kuether, Commissioner

Laura Kelly, Governor

10/28/2024

Shane Summers
Vess Oil Corporation
1700 WATERFRONT PKWY BLDG 500
WICHITA, KS 67206-6619

Re: Temporary Abandonment
API 15-015-23065-00-01
STARKEY A 24
SE/4 Sec.35-27S-04E
Butler County, Kansas

Dear Shane Summers:

Your application for Temporary Abandonment (TA) for the above-listed well is denied for the following reasons(s):

High Fluid Level

Pursuant to K.A.R. 82-3-111, the well must be plugged, or returned to service, or obtain temporary abandonment status by 11/27/2024.

This deadline does NOT override any compliance deadline given to you in any Commission Order.

You may contact me if you have any questions.

Sincerely,
DUANE KRUEGER
KCC DISTRICT 2