

KANSAS CORPORATION COMMISSION  
OIL & GAS CONSERVATION DIVISION

TEMPORARY ABANDONMENT WELL APPLICATION

OPERATOR: License# \_\_\_\_\_  
 Name: \_\_\_\_\_  
 Address 1: \_\_\_\_\_  
 Address 2: \_\_\_\_\_  
 City: \_\_\_\_\_ State: \_\_\_\_\_ Zip: \_\_\_\_\_ + \_\_\_\_\_  
 Contact Person: \_\_\_\_\_  
 Phone: ( \_\_\_\_\_ ) \_\_\_\_\_  
 Contact Person Email: \_\_\_\_\_  
 Field Contact Person: \_\_\_\_\_  
 Field Contact Person Phone: ( \_\_\_\_\_ ) \_\_\_\_\_

API No. 15- \_\_\_\_\_  
 Spot Description: \_\_\_\_\_  
 \_\_\_\_\_ - \_\_\_\_\_ - \_\_\_\_\_ - \_\_\_\_\_ Sec. \_\_\_\_\_ Twp. \_\_\_\_\_ S. R. \_\_\_\_\_  E  W  
 \_\_\_\_\_ feet from  N /  S Line of Section  
 \_\_\_\_\_ feet from  E /  W Line of Section  
 GPS Location: Lat: \_\_\_\_\_, Long: \_\_\_\_\_  
(e.g. xx.xxxxx) (e.g. -xxx.xxxxx)  
 Datum:  NAD27  NAD83  WGS84  
 County: \_\_\_\_\_ Elevation: \_\_\_\_\_  GL  KB  
 Lease Name: \_\_\_\_\_ Well #: \_\_\_\_\_  
 Well Type: (check one)  Oil  Gas  OG  WSW  Other: \_\_\_\_\_  
 SWD Permit #: \_\_\_\_\_  ENHR Permit #: \_\_\_\_\_  
 Gas Storage Permit #: \_\_\_\_\_  
 Spud Date: \_\_\_\_\_ Date Shut-In: \_\_\_\_\_

	Conductor	Surface	Production	Intermediate	Liner	Tubing
Size						
Setting Depth						
Amount of Cement						
Top of Cement						
Bottom of Cement						

Casing Fluid Level from Surface: \_\_\_\_\_ How Determined? \_\_\_\_\_ Date: \_\_\_\_\_  
 Casing Squeeze(s): \_\_\_\_\_ to \_\_\_\_\_ w / \_\_\_\_\_ sacks of cement, \_\_\_\_\_ to \_\_\_\_\_ w / \_\_\_\_\_ sacks of cement. Date: \_\_\_\_\_  
(top) (bottom) (top) (bottom)  
 Do you have a valid Oil & Gas Lease?  Yes  No  
 Depth and Type:  Junk in Hole at \_\_\_\_\_  Tools in Hole at \_\_\_\_\_ Casing Leaks:  Yes  No Depth of casing leak(s): \_\_\_\_\_  
(depth) (depth)  
 Type Completion:  ALT. I  ALT. II Depth of:  DV Tool: \_\_\_\_\_ w / \_\_\_\_\_ sacks of cement  Port Collar: \_\_\_\_\_ w / \_\_\_\_\_ sack of cement  
(depth) (depth)  
 Packer Type: \_\_\_\_\_ Size: \_\_\_\_\_ Inch Set at: \_\_\_\_\_ Feet  
 Total Depth: \_\_\_\_\_ Plug Back Depth: \_\_\_\_\_ Plug Back Method: \_\_\_\_\_

**Geological Data:**

Formation Name	Formation Top	Formation Base	Completion Information
1. _____	At: _____	to _____ Feet	Perforation Interval _____ to _____ Feet or Open Hole Interval _____ to _____ Feet
2. _____	At: _____	to _____ Feet	Perforation Interval _____ to _____ Feet or Open Hole Interval _____ to _____ Feet

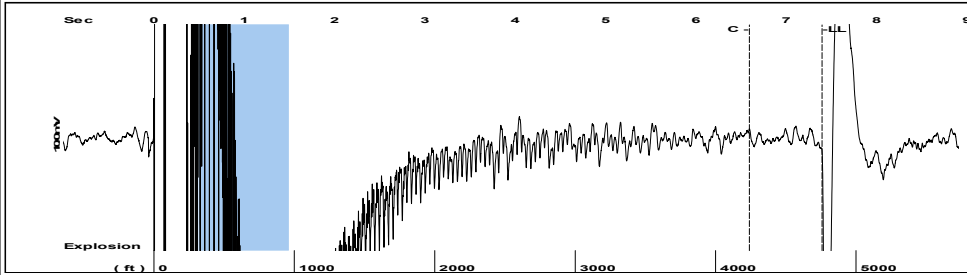
UNDER PENALTY OF PERJURY I HEREBY ATTEST THAT THE INFORMATION CONTAINED HEREIN IS TRUE AND CORRECT TO THE BEST OF MY KNOWLEDGE

Submitted Electronically

<b>Do NOT Write in This Space - KCC USE ONLY</b>	Date Tested: _____	Results: _____	Date Plugged: _____	Date Repaired: _____	Date Put Back in Service: _____
	Review Completed by: _____ Comments: _____				
TA Approved: <input type="checkbox"/> Yes <input type="checkbox"/> Denied Date: _____					

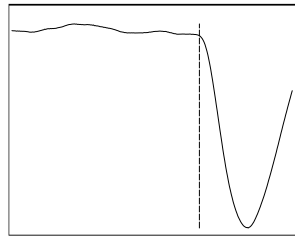
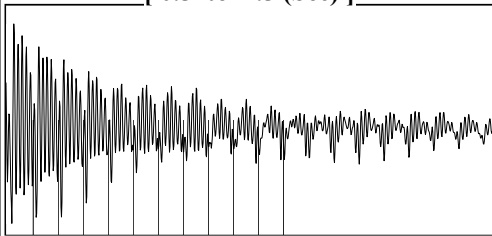
Mail to the Appropriate KCC Conservation Office:

	KCC District Office #1 - 210 E. Frontview, Suite A, Dodge City, KS 67801	Phone 620.682.7933
	KCC District Office #2 - 3450 N. Rock Road, Building 600, Suite 601, Wichita, KS 67226	Phone 316.337.7400
	KCC District Office #3 - 137 E. 21st St., Chanute, KS 66720	Phone 620.902.6450
	KCC District Office #4 - 2301 E. 13th Street, Hays, KS 67601-2651	Phone 785.261.6250

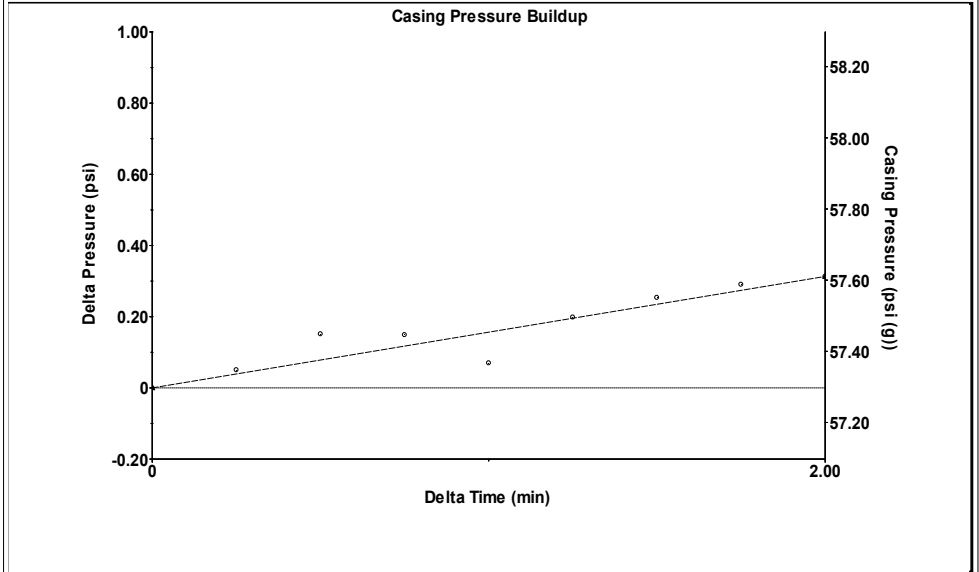


Filter Type High Pass Automatic Collar Count Yes Time 7.397 sec  
 Manual Acoustic Veloc 1272.37 ft/s Manual JTS/sec 19.4553 Joints 145.499 Jts  
 Depth 4757.83 ft

[ 0.5 to 1.5 (Sec) ]



**Analysis Method: Automatic**



Change in Pressure 0.31 psi PT18820  
 Change in Time 2.00 min Range 0 - ? psi

<b>Production</b>	<b>Potential</b>	<b>Casing Pressure</b>		<b>Producing</b>	
Current	- * - BBL/D	57.3 psi (g)		<b>Annular Gas Flow</b>	6 Mscf/D
Oil 5	- * - BBL/D	Casing Pressure Buildup		<b>% Liquid</b>	76 %
Water 20	- * - Mscf/D	0.3 psi			
Gas 10.0		2.00 min			
<b>IPR Method</b>	<b>Vogel</b>	<b>Gas/Liquid Interface Pressure</b>			
PBHP/SBHP	- * -	66.0 psi (g)			
<b>Production Efficiency</b>	0.0	<b>Liquid Level Depth</b>			
Oil 40 deg.API		4757.83 ft			
Water 1.05 Sp.Gr.H2O		<b>Pump Intake Depth</b>			
Gas 0.72 Sp.Gr.AIR		4905.00 ft			
<b>Acoustic Velocity</b>	1286.42 ft/s	<b>Formation Depth</b>			
		4830.00 ft			
<b>Formation Submergence</b>			<b>Pump Intake</b>	109.8 psi (g)	
Total Gaseous Liquid Column HT (TVD)		147 ft	<b>Producing BHP</b>	84.6 psi (g)	
Equivalent Gas Free Liquid HT (TVD)		130 ft	<b>Static BHP</b>	18.7 psi (g)	
<b>Acoustic Test</b>					

<b>Acoustic Velocity</b>	1286.42 ft/s	<b>Joints counted</b>	124
<b>Joints Per Second</b>	19.6701 jts/sec	<b>Joints to liquid level</b>	145.499
<b>Depth to liquid level</b>	4757.83 ft	<b>Filter Width</b>	17.4553 21.4553
<b>Automatic Collar Count</b>	Yes	<b>Time to 1st Collar</b>	0.288 6.592

Conservation Division  
District Office No. 1  
210 E. Frontview, Suite A  
Dodge City, KS 67801



Phone: 620-682-7933  
<http://kcc.ks.gov/>

Andrew J. French, Chairperson  
Dwight D. Keen, Commissioner  
Annie Kuether, Commissioner

Laura Kelly, Governor

10/30/2024

Amanda Lair  
BCE-Mach III LLC  
14201 WIRELESS WAY SUITE 300  
OKLAHOMA CITY, OK 73134-2521

Re: Temporary Abandonment  
API 15-007-24259-00-00  
STERNBERGER B 4  
SW/4 Sec.12-35S-12W  
Barber County, Kansas

Dear Amanda Lair:

"Your temporary abandonment (TA) application for the well listed above has been approved. In accordance with K.A.R. 82-3-111 the TA status of this well will expire 10/30/2025.

- \* If you return this well to service or plug it, please notify the District Office.
- \* If you sell this well you are required to file a Transfer of Operator form, T-1.
- \* If the well will remain temporarily abandoned, you must submit a new TA application, CP-111, before 10/30/2025.

You may contact me at the number above if you have questions.

Very truly yours,

Michael Maier"