

KANSAS CORPORATION COMMISSION
OIL & GAS CONSERVATION DIVISION

TEMPORARY ABANDONMENT WELL APPLICATION

OPERATOR: License#
Name:
Address 1:
Address 2:
City: State: Zip:
Contact Person:
Phone:
Contact Person Email:
Field Contact Person:
Field Contact Person Phone:

API No. 15-
Spot Description:
Sec. Twp. S. R.
GPS Location: Lat: Long:
Datum: NAD27 NAD83 WGS84
County: Elevation:
Lease Name: Well #:
Well Type: Oil Gas OG WSW Other:
SWD Permit #: ENHR Permit #:
Gas Storage Permit #:
Spud Date: Date Shut-In:

Table with 7 columns: Conductor, Surface, Production, Intermediate, Liner, Tubing. Rows include Size, Setting Depth, Amount of Cement, Top of Cement, Bottom of Cement.

Casing Fluid Level from Surface: How Determined? Date:
Casing Squeeze(s): to w / sacks of cement, to w / sacks of cement. Date:
Do you have a valid Oil & Gas Lease? Yes No
Depth and Type: Junk in Hole at Tools in Hole at Casing Leaks: Yes No Depth of casing leak(s):
Type Completion: ALT. I ALT. II Depth of: DV Tool: w / sacks of cement Port Collar: w / sack of cement
Packer Type: Size: Inch Set at: Feet
Total Depth: Plug Back Depth: Plug Back Method:

Geological Data:

Table with 4 columns: Formation Name, Formation Top, Formation Base, Completion Information. Rows 1 and 2.

UNDER PENALTY OF PERJURY I HEREBY ATTEST THAT THE INFORMATION CONTAINED HEREIN IS TRUE AND CORRECT TO THE BEST OF MY KNOWLEDGE

Submitted Electronically

Do NOT Write in This Space - KCC USE ONLY
Date Tested: Results: Date Plugged: Date Repaired: Date Put Back in Service:
Review Completed by: Comments:
TA Approved: Yes Denied Date:

Mail to the Appropriate KCC Conservation Office:

Table with 3 columns: District Office, Address, Phone. Rows for District Office #1, #2, #3, #4.

Liquid Level

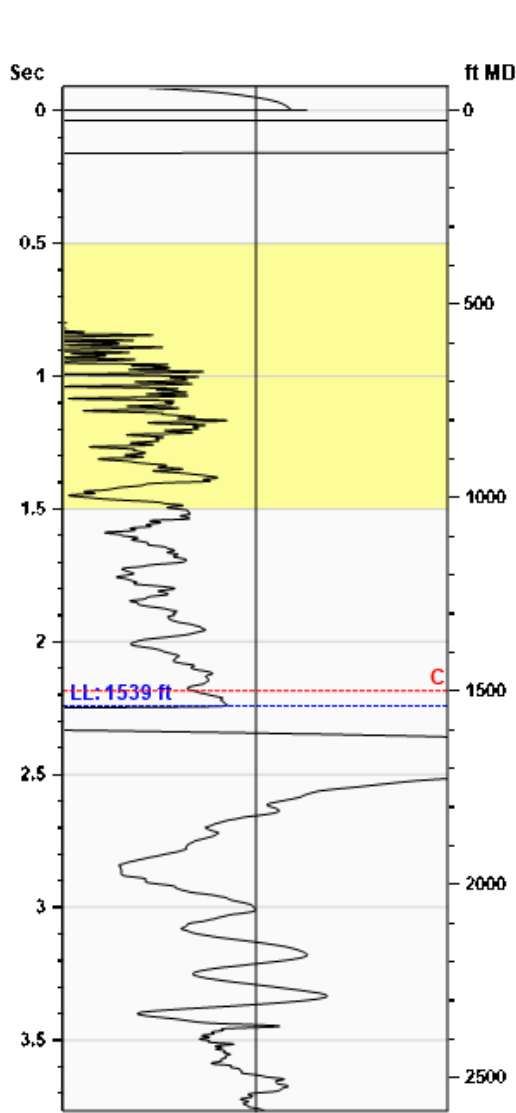
1539 ft MD

Fluid Above Pump

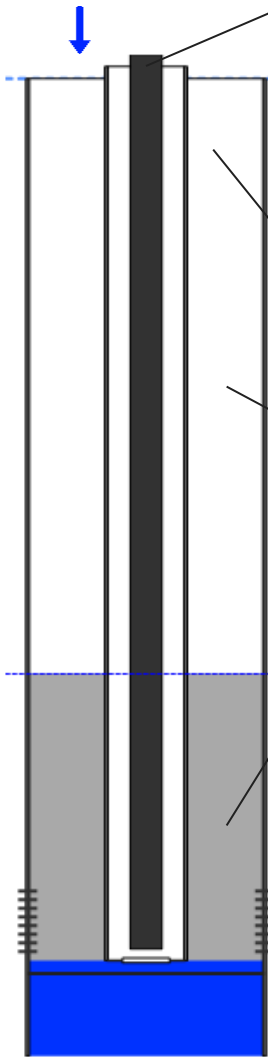
741 ft TVD

Equivalent Gas Free Above Pump

741 ft TVD



Gun - WRFG 1231



Production

Date Entered	11/04/24		
Oil	Current	Potential	BBL/D
Water	**	**	BBL/D
Gas	**	**	Mscf/D
IPR Method	Vogel		
PBHP/SBHP	-0.00		
Producing Efficiency	0.00%		

Casing Pressure

Pressure	0.9 psi (g)
----------	-------------

Annular Gas Flow

Gas Flow	0.0 Mscf/D
----------	------------

Fluid Properties

% Liquid Above Pump	100.00%
% Liquid Below Pump	**

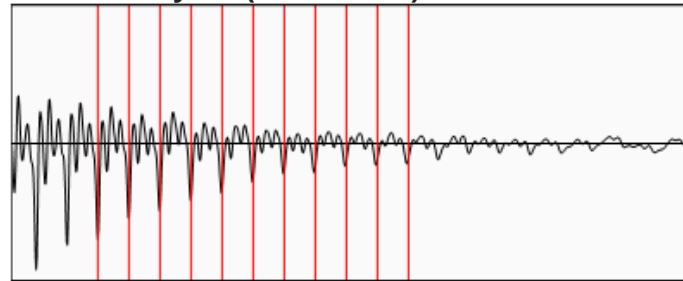
Depths

Pump Intake Depth	2280 ft
Formation Depth	2277 ft

Wellbore Pressures

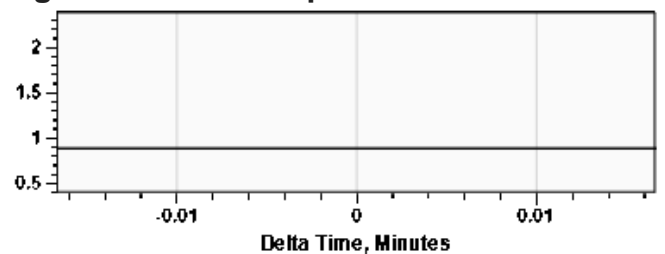
PIP	250.9 psi (g)
PBHP	249.9 psi (g)
SBHP	**
Gas/Liq Interface	1.4 psi (g)

Collar Analysis (Automatic)



Average Acoustic Velocity	1373 ft/s
Average Joints Per Sec.	21.66 Jts/sec
Joints To Liquid	48.56 Jts

Casing Pressure Buildup



Casing Pressure	0.9 psi (g)
Buildup	0.0 psi (g)
Buildup Time	0 sec
Gas Gravity from Collar Analysis (Automatic)	0.6368 Air = 1

Comments and Recommendations

Liquid Level

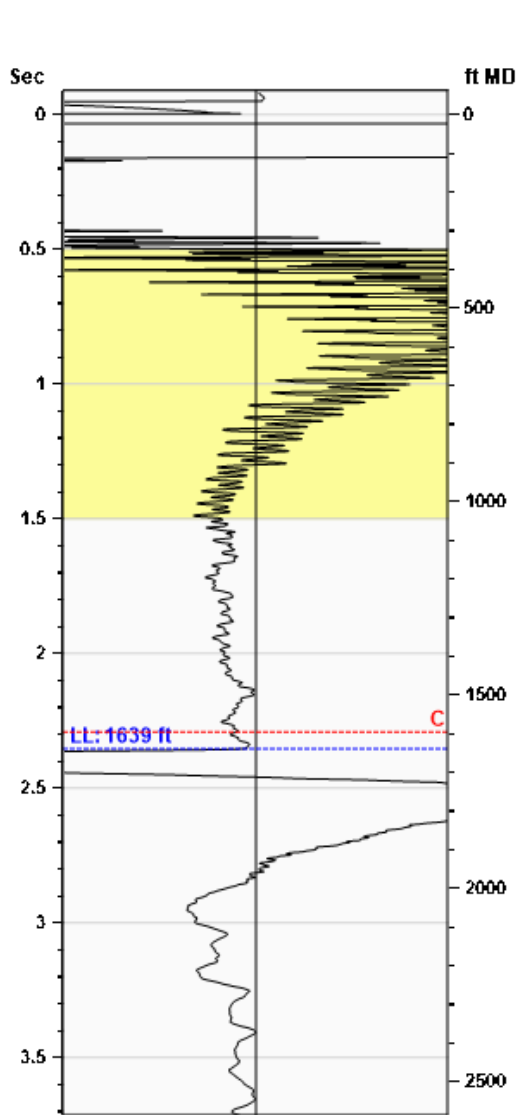
1639 ft MD

Fluid Above Pump

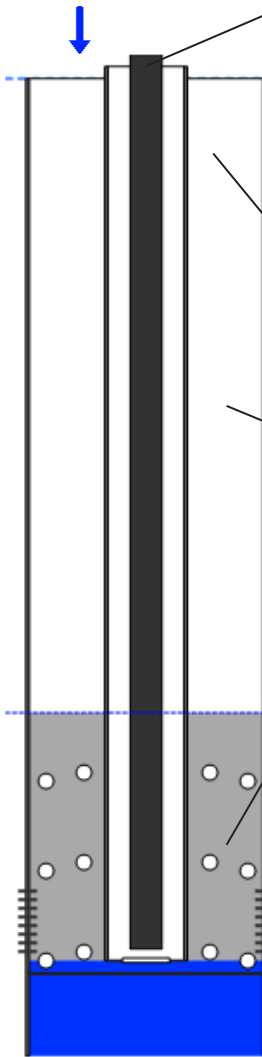
641 ft TVD

Equivalent Gas Free Above Pump

489 ft TVD



Gun - WRFG 1231



Production

Date Entered	11/29/23		
Oil	Current **	Potential **	BBL/D
Water	**	**	BBL/D
Gas	**	**	Mscf/D
IPR Method	Vogel		
PBHP/SBHP	-0.00		
Producing Efficiency	0.00%		

Casing Pressure

Pressure	4.3 psi (g)
----------	-------------

Annular Gas Flow

Gas Flow	4.2 Mscf/D
----------	------------

Fluid Properties

% Liquid Above Pump	76.18%
% Liquid Below Pump	**

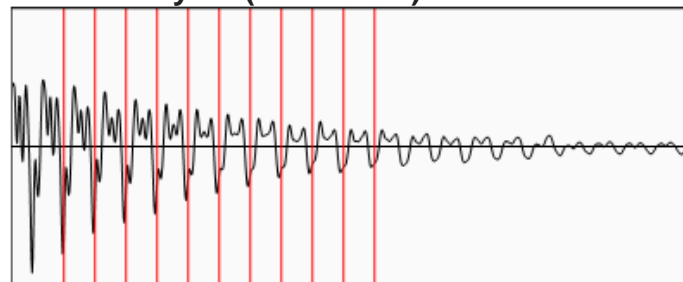
Depths

Pump Intake Depth	2280 ft
Formation Depth	2277 ft

Wellbore Pressures

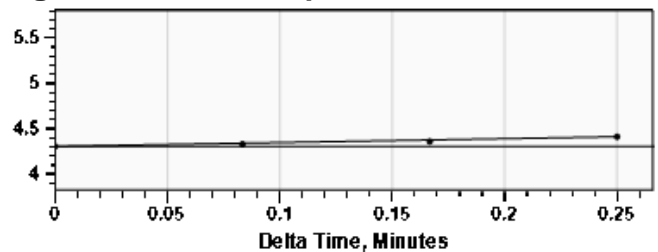
PIP	169.6 psi (g)
PBHP	168.6 psi (g)
SBHP	**
Gas/Liq Interface	5.0 psi (g)

Collar Analysis (Automatic)



Average Acoustic Velocity	1393 ft/s
Average Joints Per Sec.	21.97 Jts/sec
Joints To Liquid	51.72 Jts

Casing Pressure Buildup



Casing Pressure	4.3 psi (g)
Buildup	0.1 psi (g)
Buildup Time	15 sec
Gas Gravity from Collar Analysis (Automatic)	0.6231 Air = 1

Comments and Recommendations

Liquid Level

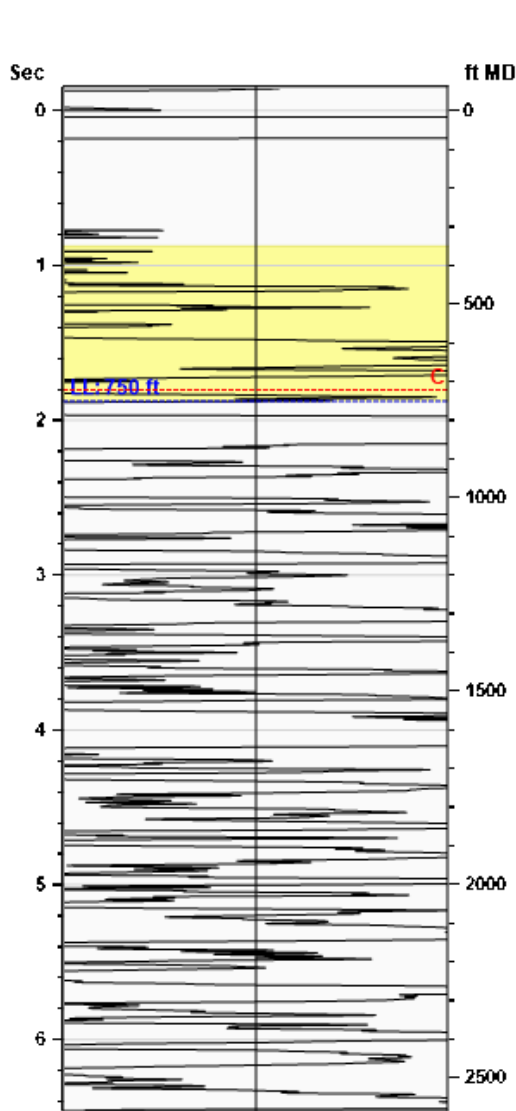
750 ft MD

Fluid Above Pump

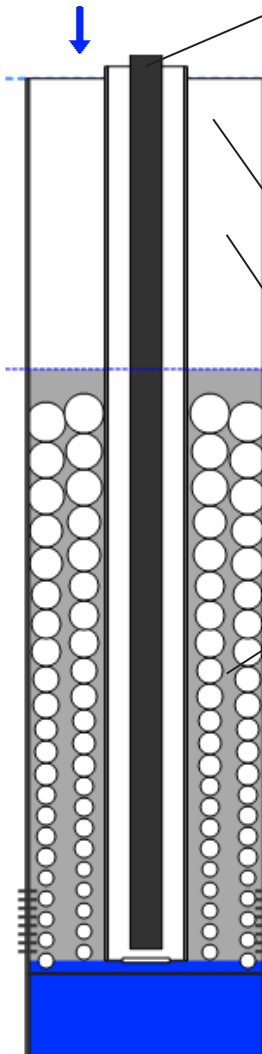
1530 ft TVD

Equivalent Gas Free Above Pump

360 ft TVD



Gun - WRFG 1231



Production

Date Entered	08/14/23		
Oil	Current	Potential	BBL/D
Water	**	**	BBL/D
Gas	**	**	Mscf/D
IPR Method	Vogel		
PBHP/SBHP	-0.00		
Producing Efficiency	0.00%		

Casing Pressure

Pressure	10.4 psi (g)
----------	--------------

Annular Gas Flow

Gas Flow	78.8 Mscf/D
----------	-------------

Fluid Properties

% Liquid Above Pump	23.38%
% Liquid Below Pump	**

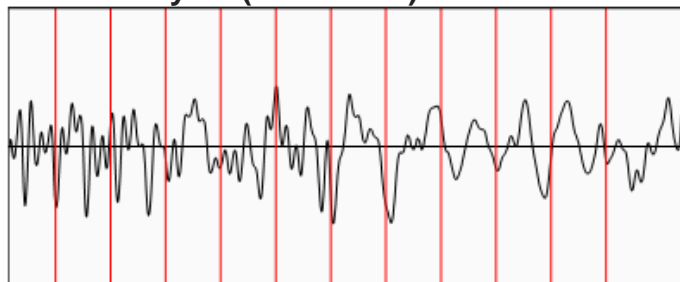
Depths

Pump Intake Depth	2280 ft
Formation Depth	2277 ft

Wellbore Pressures

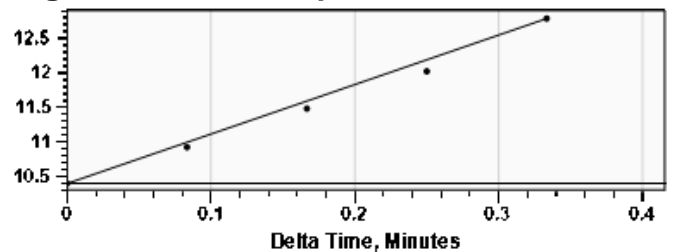
PIP	135.8 psi (g)
PBHP	134.8 psi (g)
SBHP	**
Gas/Liq Interface	11.2 psi (g)

Collar Analysis (Automatic)



Average Acoustic Velocity	801 ft/s
Average Joints Per Sec.	12.63 Jts/sec
Joints To Liquid	23.67 Jts

Casing Pressure Buildup



Casing Pressure	10.4 psi (g)
Buildup	2.4 psi (g)
Buildup Time	20 sec
Gas Gravity from Collar Analysis (Automatic)	1.1525 Air = 1

Comments and Recommendations

11/06/2024

Cooper Seely
Darrah Oil Company, LLC
125 N MARKET SUITE 1015
WICHITA, KS 67202-1700

Re: Temporary Abandonment
API 15-185-23154-00-00
SEIBERT 3-31
SW/4 Sec.31-24S-15W
Stafford County, Kansas

Dear Cooper Seely:

"Your temporary abandonment (TA) application for the well listed above has been approved. In accordance with K.A.R. 82-3-111 the TA status of this well will expire 11/06/2025.

- * If you return this well to service or plug it, please notify the District Office.
- * If you sell this well you are required to file a Transfer of Operator form, T-1.
- * If the well will remain temporarily abandoned, you must submit a new TA application, CP-111, before 11/06/2025.

You may contact me at the number above if you have questions.

Very truly yours,

Michael Maier"