

KANSAS CORPORATION COMMISSION
OIL & GAS CONSERVATION DIVISION

TEMPORARY ABANDONMENT WELL APPLICATION

OPERATOR: License#
Name:
Address 1:
Address 2:
City: State: Zip:
Contact Person:
Phone:
Contact Person Email:
Field Contact Person:
Field Contact Person Phone:

API No. 15-
Spot Description:
Sec. Twp. S. R.
GPS Location: Lat, Long
Datum: NAD27, NAD83, WGS84
County: Elevation:
Lease Name: Well #:
Well Type: Oil, Gas, OG, WSW, Other
SWD Permit #: ENHR Permit #:
Gas Storage Permit #:
Spud Date: Date Shut-In:

Table with 7 columns: Conductor, Surface, Production, Intermediate, Liner, Tubing. Rows include Size, Setting Depth, Amount of Cement, Top of Cement, Bottom of Cement.

Casing Fluid Level from Surface: How Determined? Date:
Casing Squeeze(s): to w / sacks of cement, to w / sacks of cement. Date:
Do you have a valid Oil & Gas Lease? Yes No
Depth and Type: Junk in Hole at Tools in Hole at Casing Leaks: Yes No Depth of casing leak(s):
Type Completion: ALT. I ALT. II Depth of: DV Tool: w / sacks of cement Port Collar: w / sack of cement
Packer Type: Size: Inch Set at: Feet
Total Depth: Plug Back Depth: Plug Back Method:

Geological Data:

Table with 4 columns: Formation Name, Formation Top, Formation Base, Completion Information. Rows 1 and 2.

UNDER PENALTY OF PERJURY I HEREBY ATTEST THAT THE INFORMATION CONTAINED HEREIN IS TRUE AND CORRECT TO THE BEST OF MY KNOWLEDGE

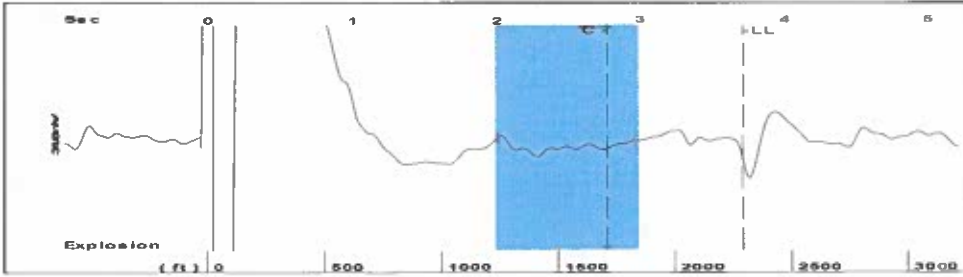
Submitted Electronically

Do NOT Write in This Space - KCC USE ONLY
Date Tested: Results: Date Plugged: Date Repaired: Date Put Back in Service:
Review Completed by: Comments:
TA Approved: Yes Denied Date:

Mail to the Appropriate KCC Conservation Office:

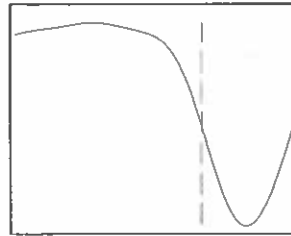
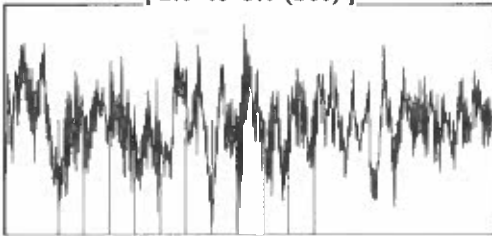
Table with 3 columns: District Office #, Address, Phone. Rows 1-4.

Group: TA'D WELLS Well: Marks A-1 (acquired on: 09/23/24 09:26:46)



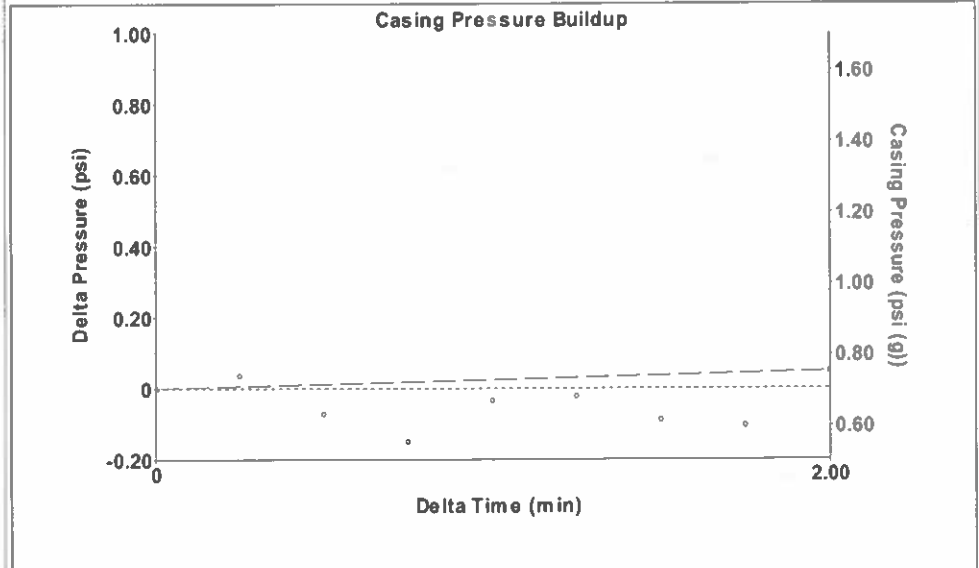
Filter Type High Pass Automatic Collar Count Yes Time 3.717 sec
 Manual Acoustic Velo 1204.59 ft/s Manual JTS/sec 19.1205 Joints 72.7368 Jts
 Depth 2291.21 ft

[2.0 to 3.0 (Sec)]



Analysis Method: Automatic

Group: TA'D WELLS Well: Marks A-1 (acquired on: 09/23/24 09:26:46)

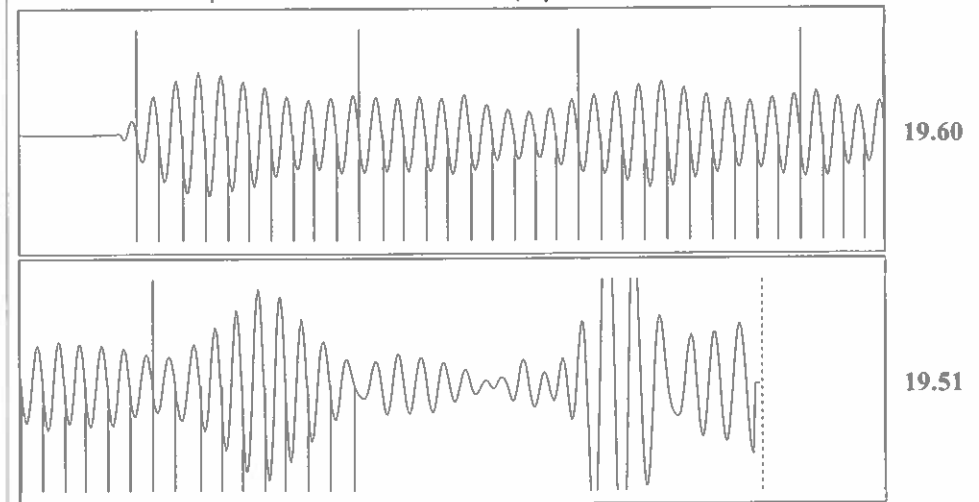


Change in Pressure 0.05 psi PT10411
 Change in Time 2.00 min Range 0 - ? psi

Group: TA'D WELLS Well: Marks A-1 (acquired on: 09/23/24 09:26:46)

Production Current	Potential	Casing Pressure	Producing
Oil - * -	- * - BBL/D	0.7 psi (g)	Annular Gas Flow
Water - * -	- * - BBL/D	Casing Pressure Buildup	0 Mscf/D
Gas - * -	- * - Mscf/D	0.0 psi	% Liquid
		2.00 min	100 %
IPR Method	Vogel	Gas/Liquid Interface Pressure	
PBHP/SBHP	- * -	1.6 psi (g)	
Production Efficiency	0.0		
Oil 40 deg.API		Liquid Level Depth	
Water 1.05 Sp.Gr.H2O		2291.21 ft	
Gas 0.77 Sp.Gr.AIR		Pump Intake Depth	
		2380.00 ft	
Acoustic Velocity	1232.83 ft/s	Formation Depth	
		2423.00 ft	
Formation Submergence			
Total Gaseous Liquid Column HT (TVD)	89 ft		
Equivalent Gas Free Liquid HT (TVD)	89 ft		
Acoustic Test			
		Pump Intake	
		31.8 psi (g)	
		Producing BHP	
		51.4 psi (g)	
		Static BHP	
		- * - psi (g)	

Group: TA'D WELLS Well: Marks A-1 (acquired on: 09/23/24 09:26:46)



Acoustic Velocity 1232.83 ft/s Joints counted 49
 Joints Per Second 19.5687 jts/sec Joints to liquid level 72.7368
 Depth to liquid level 2291.21 ft Filter Width 17.1205 21.1205
 Automatic Collar Count Yes Time to 1st Collar 0.272 2.776

Conservation Division
District Office No. 1
210 E. Frontview, Suite A
Dodge City, KS 67801



Phone: 620-682-7933
<http://kcc.ks.gov/>

Andrew J. French, Chairperson
Dwight D. Keen, Commissioner
Annie Kuether, Commissioner

Laura Kelly, Governor

11/07/2024

Katherine McClurkan
Merit Energy Company, LLC
13727 Noel Road, Suite 1200
Dallas, TX 75240-7362

Re: Temporary Abandonment
API 15-129-00408-00-00
Marks A 1
SE/4 Sec.14-34S-41W
Morton County, Kansas

Dear Katherine McClurkan:

"Your temporary abandonment (TA) application for the well listed above has been approved. In accordance with K.A.R. 82-3-111 the TA status of this well will expire 11/07/2025.

- * If you return this well to service or plug it, please notify the District Office.
- * If you sell this well you are required to file a Transfer of Operator form, T-1.
- * If the well will remain temporarily abandoned, you must submit a new TA application, CP-111, before 11/07/2025.

You may contact me at the number above if you have questions.

Very truly yours,

Michael Maier"