

KANSAS CORPORATION COMMISSION
OIL & GAS CONSERVATION DIVISION

TEMPORARY ABANDONMENT WELL APPLICATION

OPERATOR: License#
Name:
Address 1:
Address 2:
City: State: Zip:
Contact Person:
Phone:
Contact Person Email:
Field Contact Person:
Field Contact Person Phone:

API No. 15-
Spot Description:
Sec. Twp. S. R.
GPS Location: Lat: Long:
Datum: NAD27 NAD83 WGS84
County: Elevation:
Lease Name: Well #:
Well Type: Oil Gas OG WSW Other:
SWD Permit #: ENHR Permit #:
Gas Storage Permit #:
Spud Date: Date Shut-In:

Table with 7 columns: Conductor, Surface, Production, Intermediate, Liner, Tubing. Rows include Size, Setting Depth, Amount of Cement, Top of Cement, Bottom of Cement.

Casing Fluid Level from Surface: How Determined? Date:
Casing Squeeze(s): to w / sacks of cement, to w / sacks of cement. Date:
Do you have a valid Oil & Gas Lease? Yes No
Depth and Type: Junk in Hole at Tools in Hole at Casing Leaks: Yes No Depth of casing leak(s):
Type Completion: ALT. I ALT. II Depth of: DV Tool: w / sacks of cement Port Collar: w / sack of cement
Packer Type: Size: Inch Set at: Feet
Total Depth: Plug Back Depth: Plug Back Method:

Geological Data:

Table with 4 columns: Formation Name, Formation Top, Formation Base, Completion Information. Rows 1 and 2.

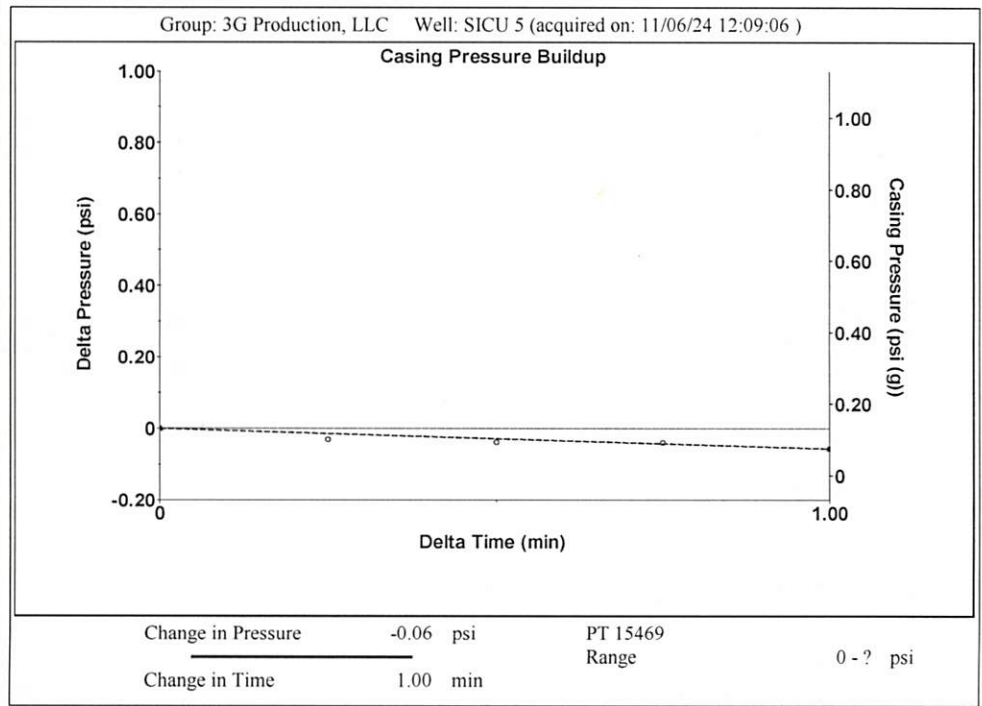
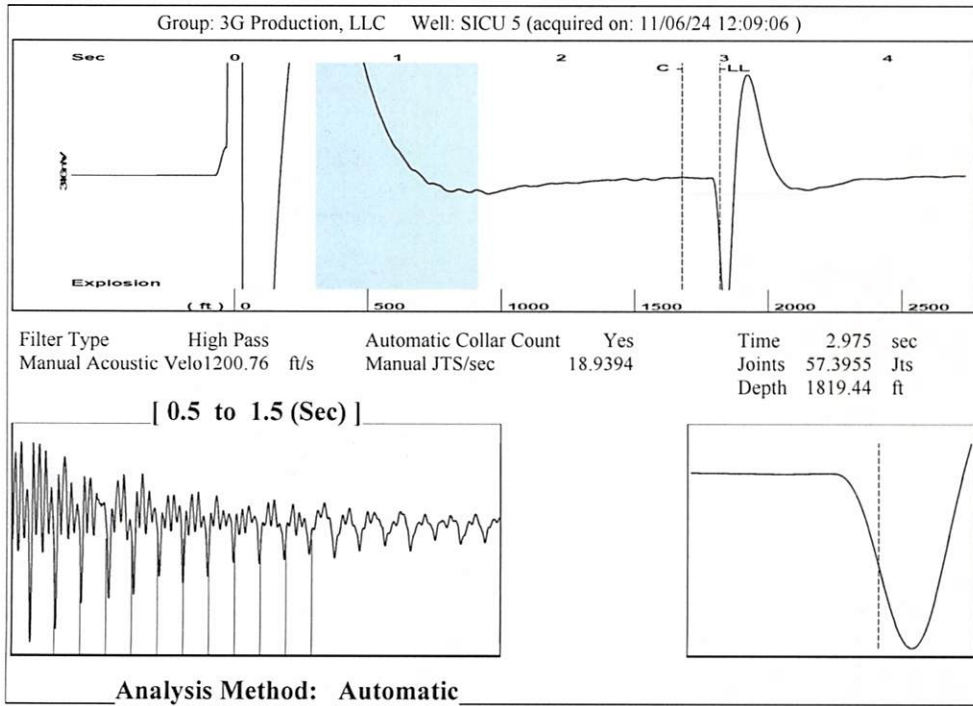
UNDER PENALTY OF PERJURY I HEREBY ATTEST THAT THE INFORMATION CONTAINED HEREIN IS TRUE AND CORRECT TO THE BEST OF MY KNOWLEDGE

Submitted Electronically

Do NOT Write in This Space - KCC USE ONLY
Date Tested: Results: Date Plugged: Date Repaired: Date Put Back in Service:
Review Completed by: Comments:
TA Approved: Yes Denied Date:

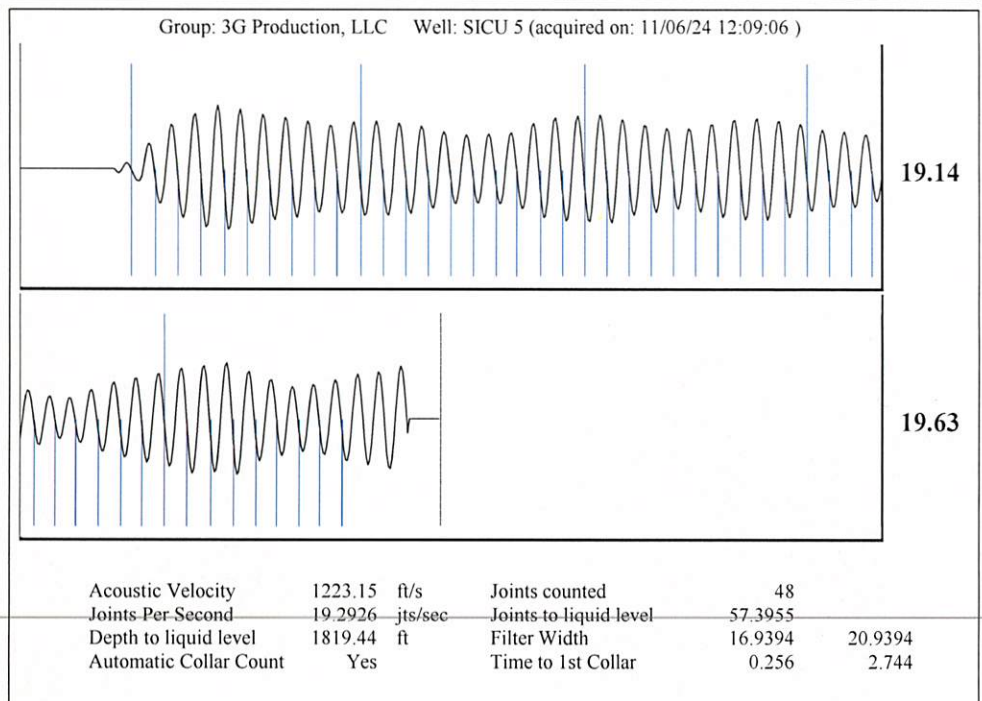
Mail to the Appropriate KCC Conservation Office:

Table with 3 columns: District Office, Address, Phone. Rows for District Office #1, #2, #3, #4.



Group: 3G Production, LLC Well: SICU 5 (acquired on: 11/06/24 12:09:06)

Production Current	Potential	Casing Pressure	Producing
Oil -*-	-*- BBL/D	0.1 psi (g)	Annular Gas Flow
Water -*-	-*- BBL/D	Casing Pressure Buildup	0 Mscf/D
Gas -*-	-*- Mscf/D	-0.1 psi	% Liquid
		1.00 min	100 %
IPR Method	Vogel	Gas/Liquid Interface Pressure	
PBHP/SBHP	-*-	0.9 psi (g)	
Production Efficiency	0.0		
Oil 40 deg.API		Liquid Level Depth	
Water 1.05 Sp.Gr.H2O		1819.44 ft	
Gas 0.76 Sp.Gr.AIR		Pump Intake Depth	
		-*- ft	
Acoustic Velocity	1223.15 ft/s	Formation Depth	
		4300.00 ft	
Formation Submergence			Pump Intake
Total Gaseous Liquid Column HT (TVD)	2481 ft		-*- psi (g)
Equivalent Gas Free Liquid HT (TVD)	2481 ft		Producing BHP
			1128.6 psi (g)
Acoustic Test			Static BHP
			-*- psi (g)



Conservation Division  
District Office No. 1  
210 E. Frontview, Suite A  
Dodge City, KS 67801



Phone: 620-682-7933  
<http://kcc.ks.gov/>

Andrew J. French, Chairperson  
Dwight D. Keen, Commissioner  
Annie Kuether, Commissioner

Laura Kelly, Governor

11/07/2024

Kenneth C Gates  
Iuka-Carmi Development LLC  
PO BOX 847  
PRATT, KS 67124-0847

Re: Temporary Abandonment  
API 15-151-10241-00-02  
SICU 5  
NW/4 Sec.18-27S-12W  
Pratt County, Kansas

Dear Kenneth C Gates:

"Your temporary abandonment (TA) application for the well listed above has been approved. In accordance with K.A.R. 82-3-111 the TA status of this well will expire 11/07/2025.

- \* If you return this well to service or plug it, please notify the District Office.
- \* If you sell this well you are required to file a Transfer of Operator form, T-1.
- \* If the well will remain temporarily abandoned, you must submit a new TA application, CP-111, before 11/07/2025.

You may contact me at the number above if you have questions.

Very truly yours,

Michael Maier"