

KANSAS CORPORATION COMMISSION
OIL & GAS CONSERVATION DIVISION

TEMPORARY ABANDONMENT WELL APPLICATION

OPERATOR: License#
Name:
Address 1:
Address 2:
City: State: Zip:
Contact Person:
Phone:
Contact Person Email:
Field Contact Person:
Field Contact Person Phone:

API No. 15-
Spot Description:
Sec. Twp. S. R.
GPS Location: Lat, Long
Datum: NAD27, NAD83, WGS84
County: Elevation:
Lease Name: Well #:
Well Type: Oil, Gas, OG, WSW, Other
SWD Permit #: ENHR Permit #:
Gas Storage Permit #:
Spud Date: Date Shut-In:

Table with 7 columns: Conductor, Surface, Production, Intermediate, Liner, Tubing. Rows include Size, Setting Depth, Amount of Cement, Top of Cement, Bottom of Cement.

Casing Fluid Level from Surface: How Determined? Date:
Casing Squeeze(s): to w / sacks of cement, to w / sacks of cement. Date:
Do you have a valid Oil & Gas Lease? Yes No
Depth and Type: Junk in Hole at Tools in Hole at Casing Leaks: Yes No Depth of casing leak(s):
Type Completion: ALT. I ALT. II Depth of: DV Tool: w / sacks of cement Port Collar: w / sack of cement
Packer Type: Size: Inch Set at: Feet
Total Depth: Plug Back Depth: Plug Back Method:

Geological Data:

Table with 4 columns: Formation Name, Formation Top, Formation Base, Completion Information. Rows 1 and 2.

UNDER PENALTY OF PERJURY I HEREBY ATTEST THAT THE INFORMATION CONTAINED HEREIN IS TRUE AND CORRECT TO THE BEST OF MY KNOWLEDGE

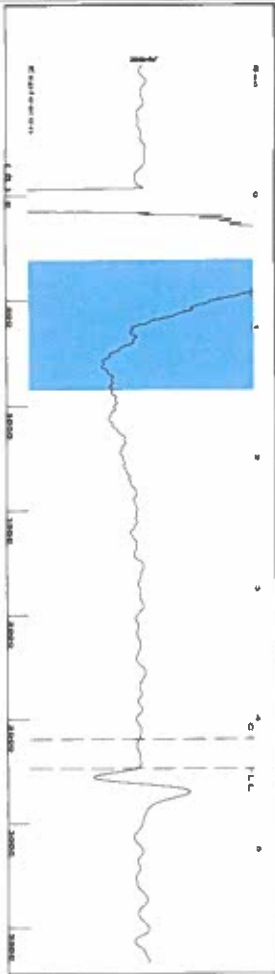
Submitted Electronically

Do NOT Write in This Space - KCC USE ONLY
Date Tested: Results: Date Plugged: Date Repaired: Date Put Back in Service:
Review Completed by: Comments:
TA Approved: Yes Denied Date:

Mail to the Appropriate KCC Conservation Office:

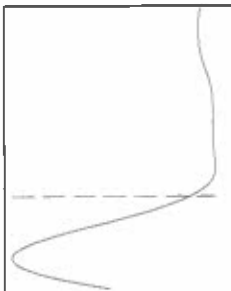
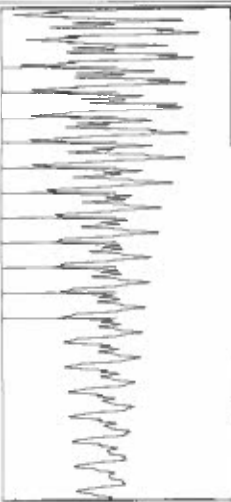
Table with 3 columns: District Office #, Address, Phone. Rows 1-4.

Group: Merit Energy Company-Ulysses Well: Tate B-4 (acquired on: 10/02/24 14:21:14)



Filter Type High Pass Automatic Collar Count Yes
 Manual Acoustic Velo 1245.58 ft/s Manual JTS/sec 19.6464
 Time 4.396 sec
 Joints 86.35 Jts
 Depth 2737.29 ft

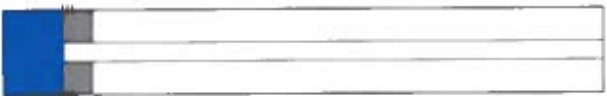
[0.5 to 1.5 (Sec)]



Analysis Method: Automatic

Group: Merit Energy Company-Ulysses Well: Tate B-4 (acquired on: 10/02/24 14:21:14)

Production Current	Potential	Casing Pressure	Producing
Oil *	BBL/D	33.4 psi (g)	Annular
Water *	BBL/D	-0.049 psi	Gas Flow
Gas *	MscFD	4.00 min	% Liquid
			100 %
IPR Method	Vogel	Gas/Liquid Interface Pressure	
PBHP/SBHP		36.8 psi (g)	
Production Efficiency	0.0		
		Liquid Level Depth	
		2737.29 ft	
Oil 40 deg API		Pump Intake Depth	
Water 1.05 Sp.Gr.H ₂ O		2914.00 ft	
Gas 0.75 Sp.Gr.AIR		Formation Depth	
		2890.00 ft	
Acoustic Velocity	1245.36 ft/s		



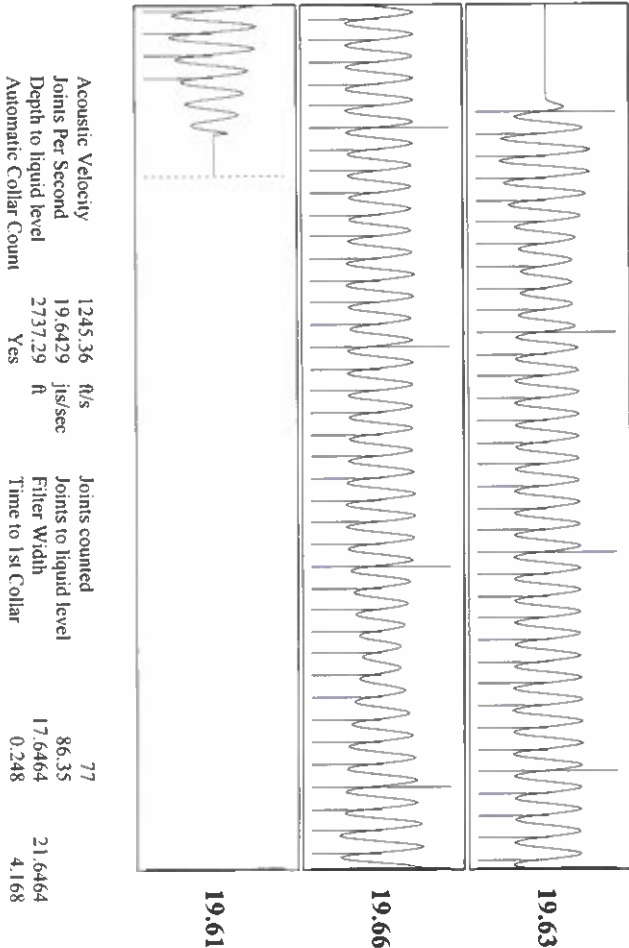
Formation Submergence 177 ft
 Total Gaseous Liquid Column HT (TVD) 177 ft
 Equivalent Gas Free Liquid HT (TVD) 177 ft
 10/2/24

Group: Merit Energy Company-Ulysses Well: Tate B-4 (acquired on: 10/02/24 14:21:14)



Change in Pressure -0.05 psi PT18788
 Change in Time 4.00 min Range 0 - ? psi

Group: Merit Energy Company-Ulysses Well: Tate B-4 (acquired on: 10/02/24 14:21:14)



Acoustic Velocity 1245.36 ft/s Joints counted 77
 Joints Per Second 19.6429 jts/sec Joints to liquid level 86.35
 Depth to liquid level 2737.29 ft Filter Width 17.6464
 Automatic Collar Count Yes Time to 1st Collar 0.248 4.168

11/07/2024

Idania Medina
Merit Energy Company, LLC
13727 NOEL ROAD, SUITE 1200
DALLAS, TX 75240-7362

Re: Temporary Abandonment
API 15-093-21754-00-00
TATE B 4
NE/4 Sec.34-26S-36W
Kearny County, Kansas

Dear Idania Medina:

"Your temporary abandonment (TA) application for the well listed above has been approved. In accordance with K.A.R. 82-3-111 the TA status of this well will expire 11/07/2025.

- * If you return this well to service or plug it, please notify the District Office.
- * If you sell this well you are required to file a Transfer of Operator form, T-1.
- * If the well will remain temporarily abandoned, you must submit a new TA application, CP-111, before 11/07/2025.

You may contact me at the number above if you have questions.

Very truly yours,

Michael Maier"