

KANSAS CORPORATION COMMISSION
OIL & GAS CONSERVATION DIVISION

TEMPORARY ABANDONMENT WELL APPLICATION

OPERATOR: License#
Name:
Address 1:
Address 2:
City: State: Zip:
Contact Person:
Phone:
Contact Person Email:
Field Contact Person:
Field Contact Person Phone:

API No. 15-
Spot Description:
Sec. Twp. S. R.
GPS Location: Lat, Long
Datum: NAD27, NAD83, WGS84
County: Elevation:
Lease Name: Well #:
Well Type: Oil, Gas, OG, WSW, Other
SWD Permit #: ENHR Permit #:
Gas Storage Permit #:
Spud Date: Date Shut-In:

Table with 7 columns: Conductor, Surface, Production, Intermediate, Liner, Tubing. Rows include Size, Setting Depth, Amount of Cement, Top of Cement, Bottom of Cement.

Casing Fluid Level from Surface: How Determined? Date:
Casing Squeeze(s): to w / sacks of cement, to w / sacks of cement. Date:
Do you have a valid Oil & Gas Lease? Yes No
Depth and Type: Junk in Hole at Tools in Hole at Casing Leaks: Yes No Depth of casing leak(s):
Type Completion: ALT. I ALT. II Depth of: DV Tool: w / sacks of cement Port Collar: w / sack of cement
Packer Type: Size: Inch Set at: Feet
Total Depth: Plug Back Depth: Plug Back Method:

Geological Data:

Table with 4 columns: Formation Name, Formation Top, Formation Base, Completion Information. Rows 1 and 2.

UNDER PENALTY OF PERJURY I HEREBY ATTEST THAT THE INFORMATION CONTAINED HEREIN IS TRUE AND CORRECT TO THE BEST OF MY KNOWLEDGE

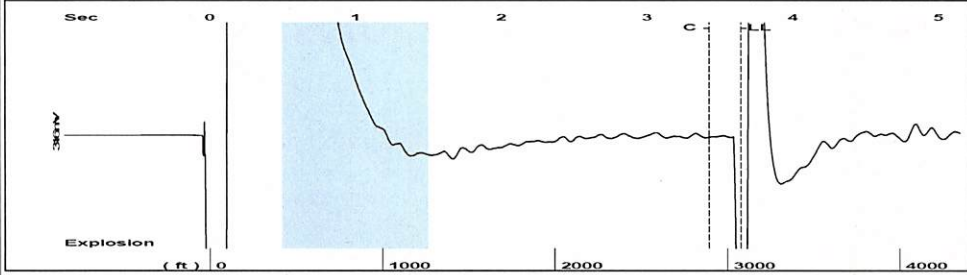
Submitted Electronically

Form with fields: Do NOT Write in This Space - KCC USE ONLY, Date Tested, Results, Date Plugged, Date Repaired, Date Put Back in Service, Review Completed by, Comments, TA Approved: Yes Denied, Date.

Mail to the Appropriate KCC Conservation Office:

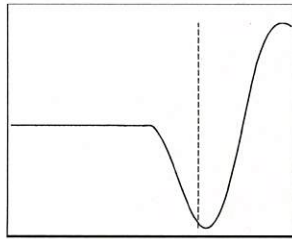
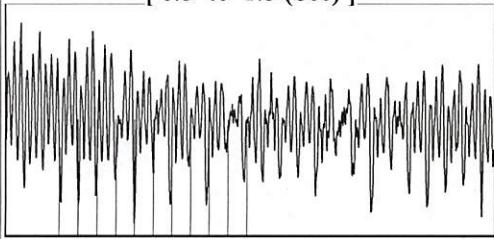
Table with 2 columns: Office Address, Phone. Rows for KCC District Office #1, #2, #3, #4.

Group: 3G Production, LLC Well: SICU 22 (acquired on: 11/06/24 11:13:58)



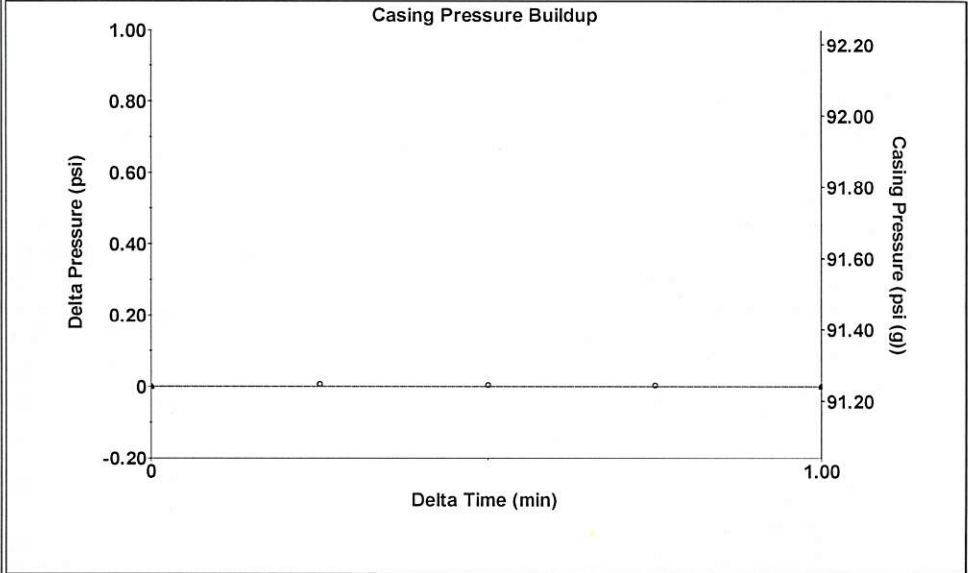
Filter Type High Pass Automatic Collar Count Yes Time 3.642 sec
 Manual Acoustic Velo 1646.75 ft/s Manual JTS/sec 25.974 Joints 97.0584 Jts
 Depth 3076.75 ft

[0.5 to 1.5 (Sec)]



Analysis Method: Automatic

Group: 3G Production, LLC Well: SICU 22 (acquired on: 11/06/24 11:13:58)



Change in Pressure 0.00 psi PT 15469
 Change in Time 1.00 min Range 0 - ? psi

Group: 3G Production, LLC Well: SICU 22 (acquired on: 11/06/24 11:13:58)

Production Current Potential
 Oil - * - - * - BBL/D
 Water - * - - * - BBL/D
 Gas - * - - * - Mscf/D

IPR Method Vogel
 PBHP/SBHP - * -
 Production Efficiency 0.0

Oil 40 deg.API
 Water 1.05 Sp.Gr.H2O
 Gas 0.55 Sp.Gr.AIR

Acoustic Velocity 1689.59 ft/s

Casing Pressure 91.2 psi (g)
 Casing Pressure Buildup 0.0 psi
 1.00 min
 Gas/Liquid Interface Pressure 97.5 psi (g)

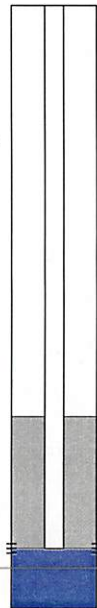
Liquid Level Depth 3076.75 ft

Pump Intake Depth 4230.00 ft

Formation Depth 4228.00 ft

Formation Submergence
 Total Gaseous Liquid Column HT (TVD) 1153 ft
 Equivalent Gas Free Liquid HT (TVD) 1153 ft

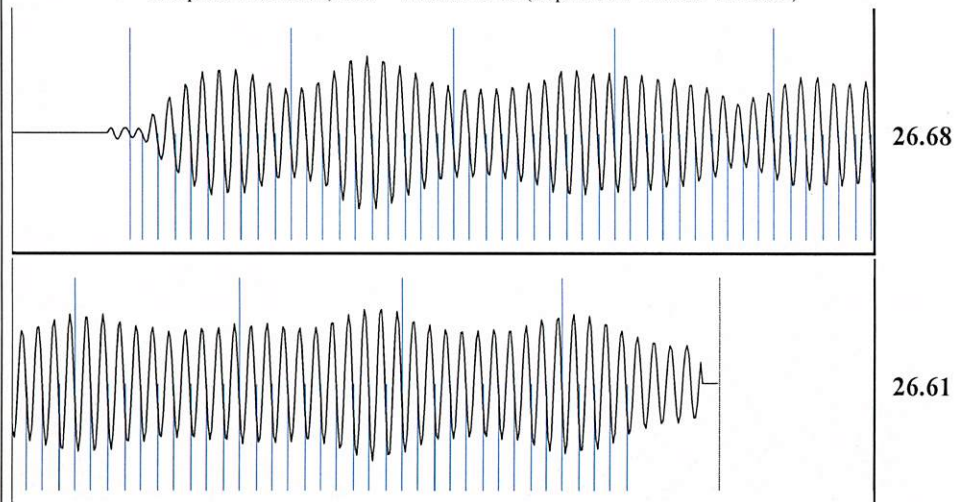
Acoustic Test



Producing Annular Gas Flow 0 Mscf/D
 % Liquid 100 %

Pump Intake 479.0 psi (g)
 Producing BHP 478.4 psi (g)
 Static BHP - * - psi (g)

Group: 3G Production, LLC Well: SICU 22 (acquired on: 11/06/24 11:13:58)



Acoustic Velocity 1689.59 ft/s Joints counted 84
 Joints Per Second 26.6497 jts/sec Joints to liquid level 97.0584
 Depth to liquid level 3076.75 ft Filter Width 23.974 27.974
 Automatic Collar Count Yes Time to 1st Collar 0.272 3.424

Conservation Division
District Office No. 1
210 E. Frontview, Suite A
Dodge City, KS 67801



Phone: 620-682-7933
<http://kcc.ks.gov/>

Andrew J. French, Chairperson
Dwight D. Keen, Commissioner
Annie Kuether, Commissioner

Laura Kelly, Governor

11/07/2024

Kenneth C Gates
Iuka-Carmi Development LLC
PO BOX 847
PRATT, KS 67124-0847

Re: Temporary Abandonment
API 15-151-10239-00-02
SICU 22
SW/4 Sec.18-27S-12W
Pratt County, Kansas

Dear Kenneth C Gates:

"Your temporary abandonment (TA) application for the well listed above has been approved. In accordance with K.A.R. 82-3-111 the TA status of this well will expire 11/07/2025.

- * If you return this well to service or plug it, please notify the District Office.
- * If you sell this well you are required to file a Transfer of Operator form, T-1.
- * If the well will remain temporarily abandoned, you must submit a new TA application, CP-111, before 11/07/2025.

You may contact me at the number above if you have questions.

Very truly yours,

Michael Maier"