

KANSAS CORPORATION COMMISSION
OIL & GAS CONSERVATION DIVISION

TEMPORARY ABANDONMENT WELL APPLICATION

OPERATOR: License#
Name:
Address 1:
Address 2:
City: State: Zip:
Contact Person:
Phone:
Contact Person Email:
Field Contact Person:
Field Contact Person Phone:

API No. 15-
Spot Description:
Sec. Twp. S. R.
GPS Location: Lat: Long:
Datum: NAD27 NAD83 WGS84
County: Elevation:
Lease Name: Well #:
Well Type: Oil Gas OG WSW Other:
SWD Permit #: ENHR Permit #:
Gas Storage Permit #:
Spud Date: Date Shut-In:

Table with 7 columns: Conductor, Surface, Production, Intermediate, Liner, Tubing. Rows include Size, Setting Depth, Amount of Cement, Top of Cement, Bottom of Cement.

Casing Fluid Level from Surface: How Determined? Date:
Casing Squeeze(s): to w / sacks of cement, to w / sacks of cement. Date:
Do you have a valid Oil & Gas Lease? Yes No
Depth and Type: Junk in Hole at Tools in Hole at Casing Leaks: Yes No Depth of casing leak(s):
Type Completion: ALT. I ALT. II Depth of: DV Tool: w / sacks of cement Port Collar: w / sack of cement
Packer Type: Size: Inch Set at: Feet
Total Depth: Plug Back Depth: Plug Back Method:

Geological Data:

Table with 4 columns: Formation Name, Formation Top, Formation Base, Completion Information. Rows 1 and 2.

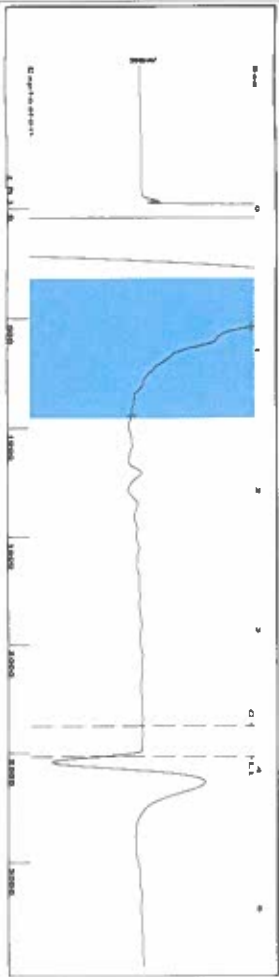
UNDER PENALTY OF PERJURY I HEREBY ATTEST THAT THE INFORMATION CONTAINED HEREIN IS TRUE AND CORRECT TO THE BEST OF MY KNOWLEDGE

Submitted Electronically

Do NOT Write in This Space - KCC USE ONLY
Date Tested: Results: Date Plugged: Date Repaired: Date Put Back in Service:
Review Completed by: Comments:
TA Approved: Yes Denied Date:

Mail to the Appropriate KCC Conservation Office:

Map of Kansas with 4 numbered districts and corresponding office addresses and phone numbers.



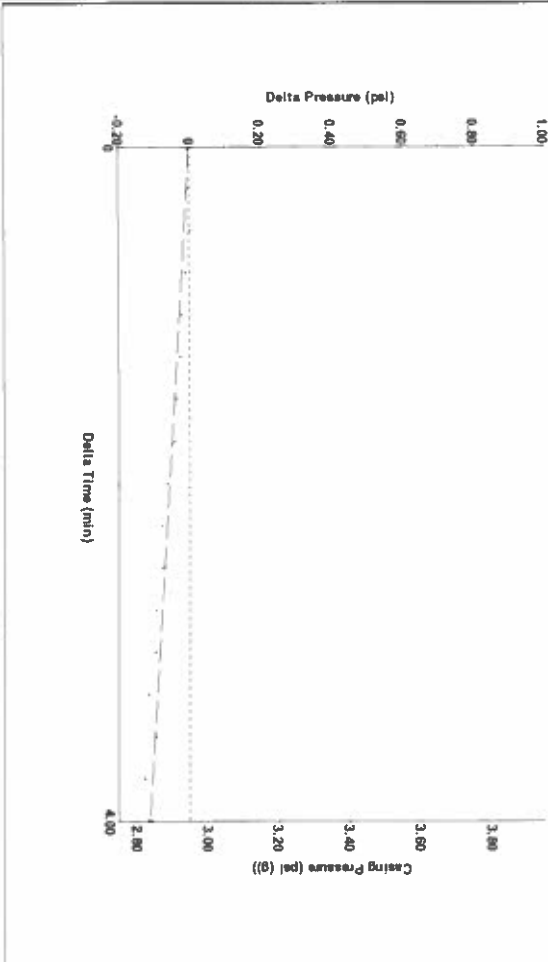
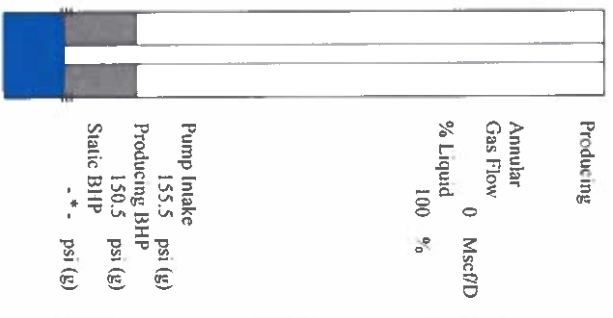
Filter Type High Pass Automatic Collar Count Yes
 Manual Acoustic Velo 1260.44 ft/s Manual JTS/sec 19.8807
 Time 3.914 sec
 Joints 79.3378 Jts
 Depth 2515.01 ft

[0.5 to 1.5 (Sec)]

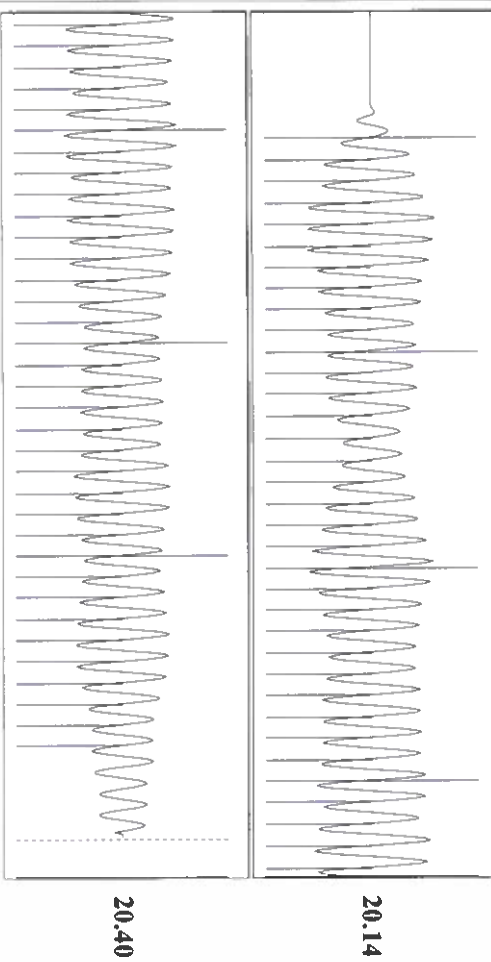


Analysis Method: Automatic

Production	Potential	Casing Pressure	Producing
Current	BBL/D	2.9 psi (g)	Annular
Oil	BBL/D	Casing Pressure Buildup	Gas Flow
Water	BBL/D	-0.112 psi	0 Mscf/D
Gas	Mscf/D	4.00 min	% Liquid
		Gas/Liquid Interface Pressure	100 %
IPR Method	Vogel	Liquid Level Depth	
PBHP/SBHP	0.0	2515.01 ft	
Production Efficiency		Pump Intake Depth	
		2963.00 ft	
Oil 40 deg API		Formation Depth	
Water 1.05 Sp.Gr.H2O		2948.00 ft	
Gas 0.72 Sp.Gr.AIR			
Acoustic Velocity 1285.14 ft/s			
Formation Submergence			
Total Gaseous Liquid Column HT (TVD)	448 ft		
Equivalent Gas Free Liquid HT (TVD)	448 ft		
10/2/24			



Change in Pressure -0.11 psi
 Change in Time 4.00 min
 PT18788 Range 0 - 2 psi



Acoustic Velocity 1285.14 ft/s
 Joints Per Second 20.2703 Jts/sec
 Depth to liquid level 2515.01 ft
 Automatic Collar Count Yes
 Joints counted 69
 Joints to liquid level 79.3378
 Filter Width 17.8807
 Time to 1st Collar 0.292
 21.8807
 3.696

11/07/2024

Katherine McClurkan
Merit Energy Company, LLC
13727 Noel Road, Suite 1200
Dallas, TX 75240-7362

Re: Temporary Abandonment
API 15-067-21159-00-01
Stever C 3
NE/4 Sec.01-28S-36W
Grant County, Kansas

Dear Katherine McClurkan:

"Your temporary abandonment (TA) application for the well listed above has been approved. In accordance with K.A.R. 82-3-111 the TA status of this well will expire 11/07/2025.

- * If you return this well to service or plug it, please notify the District Office.
- * If you sell this well you are required to file a Transfer of Operator form, T-1.
- * If the well will remain temporarily abandoned, you must submit a new TA application, CP-111, before 11/07/2025.

You may contact me at the number above if you have questions.

Very truly yours,

Michael Maier"