

KANSAS CORPORATION COMMISSION
OIL & GAS CONSERVATION DIVISION

Form must be Typed
Form must be signed

TEMPORARY ABANDONMENT WELL APPLICATION

All blanks must be complete

OPERATOR: License#
Name:
Address 1:
Address 2:
City: State: Zip:
Contact Person:
Phone:
Contact Person Email:
Field Contact Person:
Field Contact Person Phone:

API No. 15-
Spot Description:
Sec. Twp. S. R.
feet from N / S Line of Section
feet from E / W Line of Section
GPS Location: Lat: , Long:
Datum: NAD27 NAD83 WGS84
County: Elevation: GL KB
Lease Name: Well #:
Well Type: (check one) Oil Gas OG WSW Other:
SWD Permit #: ENHR Permit #:
Gas Storage Permit #:
Spud Date: Date Shut-In:

Table with 7 columns: Conductor, Surface, Production, Intermediate, Liner, Tubing. Rows include Size, Setting Depth, Amount of Cement, Top of Cement, Bottom of Cement.

Casing Fluid Level from Surface: How Determined? Date:
Casing Squeeze(s): to w / sacks of cement, to w / sacks of cement. Date:
Do you have a valid Oil & Gas Lease? Yes No
Depth and Type: Junk in Hole at Tools in Hole at Casing Leaks: Yes No Depth of casing leak(s):
Type Completion: ALT. I ALT. II Depth of: DV Tool: w / sacks of cement Port Collar: w / sack of cement
Packer Type: Size: Inch Set at: Feet
Total Depth: Plug Back Depth: Plug Back Method:

Geological Data:

Table with 4 columns: Formation Name, Formation Top, Formation Base, Completion Information. Rows 1 and 2.

UNDER PENALTY OF PERJURY I HEREBY ATTEST THAT THE INFORMATION CONTAINED HEREIN IS TRUE AND CORRECT TO THE BEST OF MY KNOWLEDGE

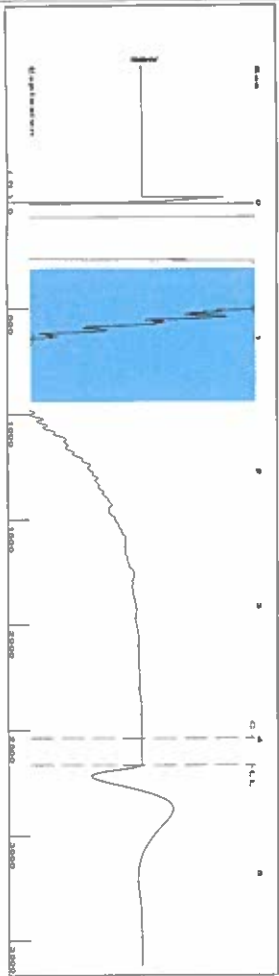
Submitted Electronically

Do NOT Write in This Space - KCC USE ONLY
Date Tested: Results: Date Plugged: Date Repaired: Date Put Back in Service:
Review Completed by: Comments:
TA Approved: Yes Denied Date:

Mail to the Appropriate KCC Conservation Office:

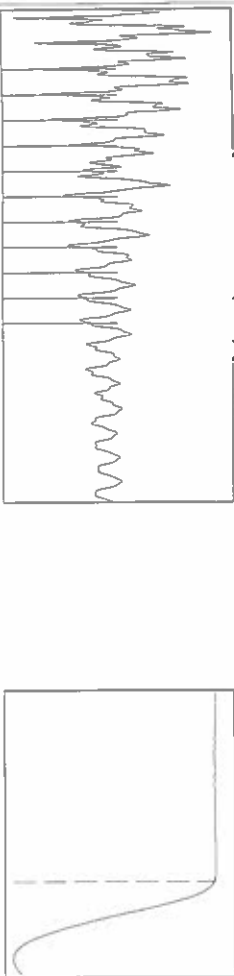
Table with 2 columns: Office Address, Phone. Rows for District Office #1, #2, #3, #4.

Group: Merit Energy Company-Ulysses Well: Pymell A-4 (acquired on: 10/02/24 15:37:41 )



Filter Type High Pass Automatic Collar Count Yes Time 4.201 sec  
 Manual Acoustic Velo 1231.07 ft/s Manual JTS/sec 19.4175 Joints 84.0648 Jts  
 Depth 2664.86 ft

[ 0.5 to 1.5 (Sec) ]



Analysis Method: Automatic

Group: Merit Energy Company-Ulysses Well: Pymell A-4 (acquired on: 10/02/24 15:37:41 )

Production	Potential	Casing Pressure	Producing
Current	BBL/D	2.4 psi (g)	Annular
Oil *	BBL/D	-0.025 psi	Gas Flow
Water *	MscFD	4.00 min	% Liquid
Gas *			100 %
IPR Method	Vogel	Gas/Liquid Interface Pressure	
PBHP/SBHP		3.5 psi (g)	
Production Efficiency			
		Liquid Level Depth	
Oil 40 deg API		2664.86 ft	
Water 1.05 Sp Gr H <sub>2</sub> O		Pump Intake Depth	
Gas 0.74 Sp Gr AIR		3039.00 ft	
Acoustic Velocity	1268.68 ft/s	Formation Depth	
		3036.00 ft	

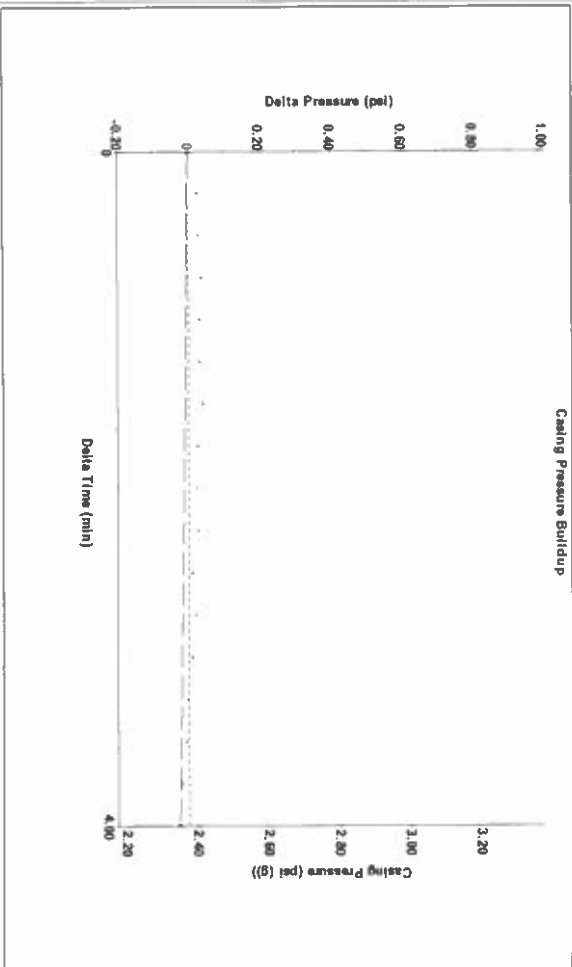


Pump Intake 130.2 psi (g)  
 Producing BHPP 129.2 psi (g)  
 Static BHPP - \* - psi (g)

Formation Submergence 374 ft  
 Total Gaseous Liquid Column HT (TVD) 374 ft  
 Equivalent Gas Free Liquid HT (TVD)

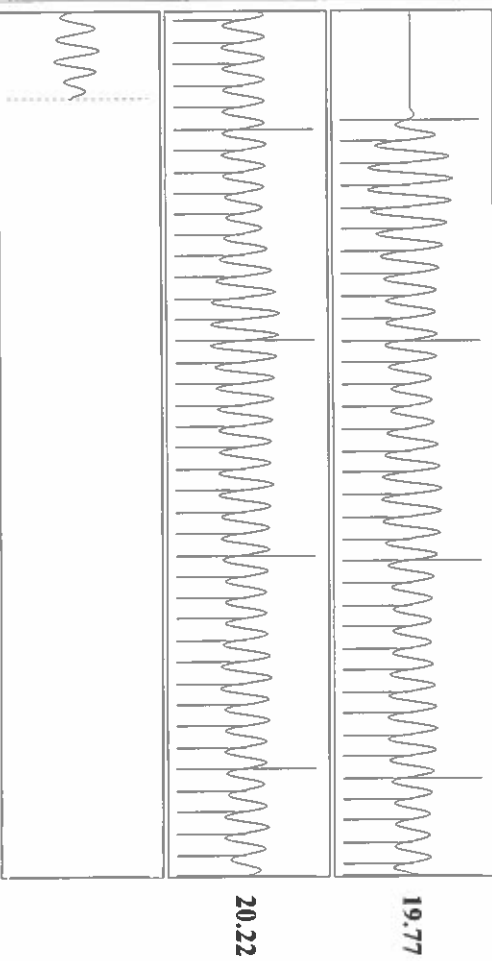
10/2/24B

Group: Merit Energy Company-Ulysses Well: Pymell A-4 (acquired on: 10/02/24 15:37:41 )



Change in Pressure -0.03 psi PT18788  
 Change in Time 4.00 min Range 0 - ? psi

Group: Merit Energy Company-Ulysses Well: Pymell A-4 (acquired on: 10/02/24 15:37:41 )



Acoustic Velocity 1268.68 ft/s Joints counted 75  
 Joints Per Second 20.0107 Jts/sec Joints to liquid level 84.0648  
 Depth to liquid level 2664.86 ft Filter Width 17.4175  
 Automatic Collar Count Yes Time to 1st Collar 0.252

11/07/2024

Katherine McClurkan  
Merit Energy Company, LLC  
13727 NOEL ROAD, SUITE 1200  
DALLAS, TX 75240-7362

Re: Temporary Abandonment  
API 15-067-21595-00-00  
Plymell A 4  
NW/4 Sec.08-28S-35W  
Grant County, Kansas

Dear Katherine McClurkan:

"Your temporary abandonment (TA) application for the well listed above has been approved. In accordance with K.A.R. 82-3-111 the TA status of this well will expire 11/07/2025.

- \* If you return this well to service or plug it, please notify the District Office.
- \* If you sell this well you are required to file a Transfer of Operator form, T-1.
- \* If the well will remain temporarily abandoned, you must submit a new TA application, CP-111, before 11/07/2025.

You may contact me at the number above if you have questions.

Very truly yours,

Michael Maier"