

KANSAS CORPORATION COMMISSION  
OIL & GAS CONSERVATION DIVISION

TEMPORARY ABANDONMENT WELL APPLICATION

OPERATOR: License# \_\_\_\_\_  
 Name: \_\_\_\_\_  
 Address 1: \_\_\_\_\_  
 Address 2: \_\_\_\_\_  
 City: \_\_\_\_\_ State: \_\_\_\_\_ Zip: \_\_\_\_\_ + \_\_\_\_\_  
 Contact Person: \_\_\_\_\_  
 Phone: ( \_\_\_\_\_ ) \_\_\_\_\_  
 Contact Person Email: \_\_\_\_\_  
 Field Contact Person: \_\_\_\_\_  
 Field Contact Person Phone: ( \_\_\_\_\_ ) \_\_\_\_\_

API No. 15- \_\_\_\_\_  
 Spot Description: \_\_\_\_\_  
 \_\_\_\_\_ - \_\_\_\_\_ - \_\_\_\_\_ - \_\_\_\_\_ Sec. \_\_\_\_\_ Twp. \_\_\_\_\_ S. R. \_\_\_\_\_  E  W  
 \_\_\_\_\_ feet from  N /  S Line of Section  
 \_\_\_\_\_ feet from  E /  W Line of Section  
 GPS Location: Lat: \_\_\_\_\_, Long: \_\_\_\_\_  
(e.g. xx.xxxxx) (e.g. -xxx.xxxxx)  
 Datum:  NAD27  NAD83  WGS84  
 County: \_\_\_\_\_ Elevation: \_\_\_\_\_  GL  KB  
 Lease Name: \_\_\_\_\_ Well #: \_\_\_\_\_  
 Well Type: (check one)  Oil  Gas  OG  WSW  Other: \_\_\_\_\_  
 SWD Permit #: \_\_\_\_\_  ENHR Permit #: \_\_\_\_\_  
 Gas Storage Permit #: \_\_\_\_\_  
 Spud Date: \_\_\_\_\_ Date Shut-In: \_\_\_\_\_

|                  | Conductor | Surface | Production | Intermediate | Liner | Tubing |
|------------------|-----------|---------|------------|--------------|-------|--------|
| Size             |           |         |            |              |       |        |
| Setting Depth    |           |         |            |              |       |        |
| Amount of Cement |           |         |            |              |       |        |
| Top of Cement    |           |         |            |              |       |        |
| Bottom of Cement |           |         |            |              |       |        |

Casing Fluid Level from Surface: \_\_\_\_\_ How Determined? \_\_\_\_\_ Date: \_\_\_\_\_  
 Casing Squeeze(s): \_\_\_\_\_ to \_\_\_\_\_ w / \_\_\_\_\_ sacks of cement, \_\_\_\_\_ to \_\_\_\_\_ w / \_\_\_\_\_ sacks of cement. Date: \_\_\_\_\_  
(top) (bottom) (top) (bottom)  
 Do you have a valid Oil & Gas Lease?  Yes  No  
 Depth and Type:  Junk in Hole at \_\_\_\_\_  Tools in Hole at \_\_\_\_\_ Casing Leaks:  Yes  No Depth of casing leak(s): \_\_\_\_\_  
(depth) (depth)  
 Type Completion:  ALT. I  ALT. II Depth of:  DV Tool: \_\_\_\_\_ w / \_\_\_\_\_ sacks of cement  Port Collar: \_\_\_\_\_ w / \_\_\_\_\_ sack of cement  
(depth) (depth)  
 Packer Type: \_\_\_\_\_ Size: \_\_\_\_\_ Inch Set at: \_\_\_\_\_ Feet  
 Total Depth: \_\_\_\_\_ Plug Back Depth: \_\_\_\_\_ Plug Back Method: \_\_\_\_\_

**Geological Data:**

| Formation Name | Formation Top | Formation Base | Completion Information   |
|----------------|---------------|----------------|--|
| 1. _____       | At: _____     | to _____ Feet  | Perforation Interval _____ to _____ Feet or Open Hole Interval _____ to _____ Feet |
| 2. _____       | At: _____     | to _____ Feet  | Perforation Interval _____ to _____ Feet or Open Hole Interval _____ to _____ Feet |

UNDER PENALTY OF PERJURY I HEREBY ATTEST THAT THE INFORMATION CONTAINED HEREIN IS TRUE AND CORRECT TO THE BEST OF MY KNOWLEDGE

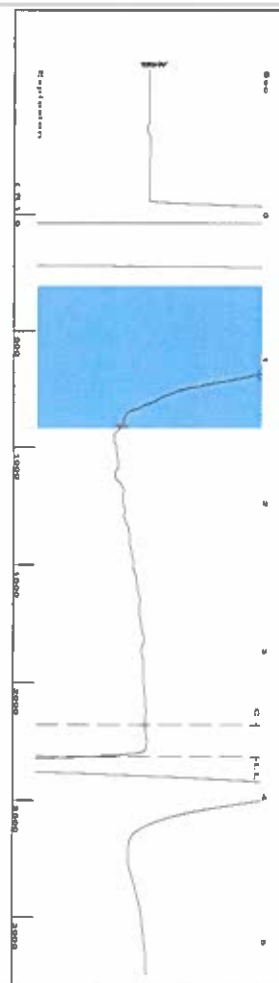
Submitted Electronically

|   |  |                |                     |                      |                                 |
|---|--|----------------|---------------------|----------------------|---------------------------------|
| <b>Do NOT Write in This Space - KCC USE ONLY</b>                                      | Date Tested: _____                         | Results: _____ | Date Plugged: _____ | Date Repaired: _____ | Date Put Back in Service: _____ |
|   | Review Completed by: _____ Comments: _____ |                |                     |                      |                                 |
| TA Approved: <input type="checkbox"/> Yes <input type="checkbox"/> Denied Date: _____ |  |                |                     |                      |                                 |

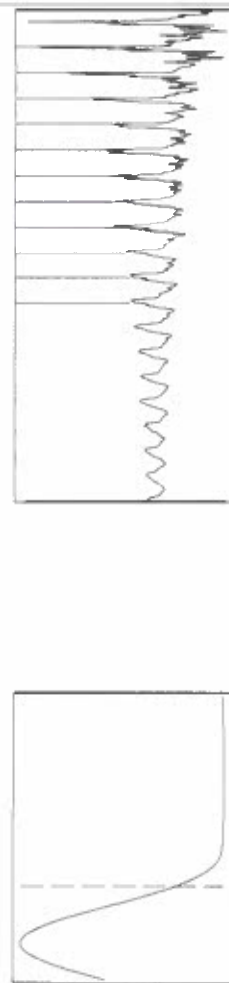
Mail to the Appropriate KCC Conservation Office:

|  |  |                    |
|--|--|--------------------|
|  | KCC District Office #1 - 210 E. Frontview, Suite A, Dodge City, KS 67801               | Phone 620.682.7933 |
|  | KCC District Office #2 - 3450 N. Rock Road, Building 600, Suite 601, Wichita, KS 67226 | Phone 316.337.7400 |
|  | KCC District Office #3 - 137 E. 21st St., Chanute, KS 66720                            | Phone 620.902.6450 |
|  | KCC District Office #4 - 2301 E. 13th Street, Hays, KS 67601-2651                      | Phone 785.261.6250 |

Group: Merit Energy Company-Ulysses Well: Gilbert A-2 (acquired on: 10/03/24 13:00:21)



Filter Type High Pass Automatic Collar Count Yes Time 3.736 sec  
 Manual Acoustic Velo 1219.23 ft/s Manual JTS/sec 19.2308 Joints 73.0957 Jis  
 Depth 2317.13 ft



Analysis Method: Automatic

Group: Merit Energy Company-Ulysses Well: Gilbert A-2 (acquired on: 10/03/24 13:00:21)

|  |                               |                 |                           |
|--|-------------------------------|-----------------|---------------------------|
| Production Current                           | Potential                     | Casing Pressure | Producing                 |
| Oil -*-                                      | BB/L/D                        | 0.4 psi (g)     | Annular Gas Flow 0 Mscf/D |
| Water -*-                                    | BB/L/D                        | 0.017 psi       | % Liquid 100 %            |
| Gas -*-                                      | Mscf/D                        | 4.00 psi        |                           |
| IPR Method Vogel                             | Gas/Liquid Interface Pressure | 1.4 psi (g)     |                           |
| PBHP/SBHP -*-                                | Liquid Level Depth            | 2317.13 ft      |                           |
| Production Efficiency 0.0                    | Pump Intake Depth             | 2864.00 ft      |                           |
| Oil 40 deg API                               | Formation Depth               | 2778.00 ft      |                           |
| Water 1.05 Sp Gr: H2O                        |                               |                 |                           |
| Gas 0.76 Sp Gr: AIR                          |                               |                 |                           |
| Acoustic Velocity 1240.43 ft/s               |                               |                 |                           |
| Formation Submergence                        |                               |                 |                           |
| Total Gaseous Liquid Column HT (TVVD) 547 ft |                               |                 |                           |
| Equivalent Gas Free Liquid HT (TVVD) 547 ft  |                               |                 |                           |
| 10/3/24                                      |                               |                 |                           |

Group: Merit Energy Company-Ulysses Well: Gilbert A-2 (acquired on: 10/03/24 13:00:21)



Change in Pressure 0.02 psi PT18788  
 Change in Time 4.00 min Range 0 - ? psi

Group: Merit Energy Company-Ulysses Well: Gilbert A-2 (acquired on: 10/03/24 13:00:21)

|                        |                 |                        |         |
|------------------------|-----------------|------------------------|---------|
| Acoustic Velocity      | 1240.43 ft/s    | Joints counted         | 63      |
| Joints Per Second      | 19.5652 Jis/sec | Joints to liquid level | 73.0957 |
| Depth to liquid level  | 2317.13 ft      | Filter Width           | 17.2308 |
| Automatic Collar Count | Yes             | Time to 1st Collar     | 0.296   |

Conservation Division  
District Office No. 1  
210 E. Frontview, Suite A  
Dodge City, KS 67801



Phone: 620-682-7933  
<http://kcc.ks.gov/>

Andrew J. French, Chairperson  
Dwight D. Keen, Commissioner  
Annie Kuether, Commissioner

Laura Kelly, Governor

11/07/2024

Katherine McClurkan  
Merit Energy Company, LLC  
13727 Noel Raod, Suite1200  
Dallas, TX 75240

Re: Temporary Abandonment  
API 15-067-21160-00-01  
Gilbert A 2  
SW/4 Sec.32-30S-35W  
Grant County, Kansas

Dear Katherine McClurkan:

"Your temporary abandonment (TA) application for the well listed above has been approved. In accordance with K.A.R. 82-3-111 the TA status of this well will expire 11/07/2025.

- \* If you return this well to service or plug it, please notify the District Office.
- \* If you sell this well you are required to file a Transfer of Operator form, T-1.
- \* If the well will remain temporarily abandoned, you must submit a new TA application, CP-111, before 11/07/2025.

You may contact me at the number above if you have questions.

Very truly yours,

Michael Maier"