

KANSAS CORPORATION COMMISSION
OIL & GAS CONSERVATION DIVISION

Form must be Typed
Form must be signed

TEMPORARY ABANDONMENT WELL APPLICATION

All blanks must be complete

OPERATOR: License#
Name:
Address 1:
Address 2:
City: State: Zip:
Contact Person:
Phone:
Contact Person Email:
Field Contact Person:
Field Contact Person Phone:

API No. 15-
Spot Description:
Sec. Twp. S. R.
feet from N / S Line of Section
feet from E / W Line of Section
GPS Location: Lat: , Long:
Datum: NAD27 NAD83 WGS84
County: Elevation: GL KB
Lease Name: Well #:
Well Type: (check one) Oil Gas OG WSW Other:
SWD Permit #: ENHR Permit #:
Gas Storage Permit #:
Spud Date: Date Shut-In:

Table with 7 columns: Conductor, Surface, Production, Intermediate, Liner, Tubing. Rows include Size, Setting Depth, Amount of Cement, Top of Cement, Bottom of Cement.

Casing Fluid Level from Surface: How Determined? Date:
Casing Squeeze(s): to w / sacks of cement, to w / sacks of cement. Date:
Do you have a valid Oil & Gas Lease? Yes No
Depth and Type: Junk in Hole at Tools in Hole at Casing Leaks: Yes No Depth of casing leak(s):
Type Completion: ALT. I ALT. II Depth of: DV Tool: w / sacks of cement Port Collar: w / sack of cement
Packer Type: Size: Inch Set at: Feet
Total Depth: Plug Back Depth: Plug Back Method:

Geological Date:

Table with 4 columns: Formation Name, Formation Top, Formation Base, Completion Information. Rows 1 and 2.

UNDER PENALTY OF PERJURY I HEREBY ATTEST THAT THE INFORMATION CONTAINED HEREIN IS TRUE AND CORRECT TO THE BEST OF MY KNOWLEDGE

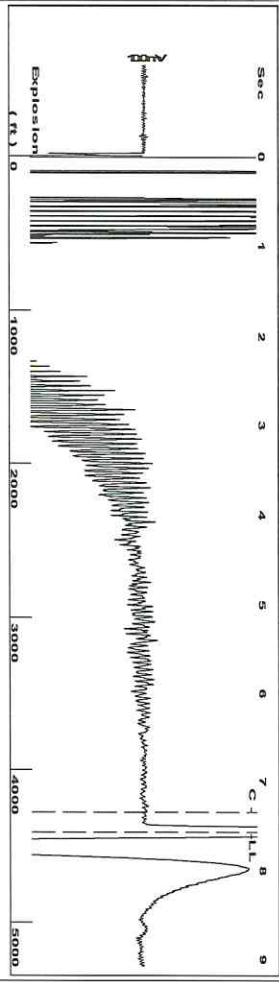
Submitted Electronically

Form with fields: Do NOT Write in This Space - KCC USE ONLY, Date Tested, Results, Date Plugged, Date Repaired, Date Put Back in Service, Review Completed by, Comments, TA Approved: Yes Denied, Date.

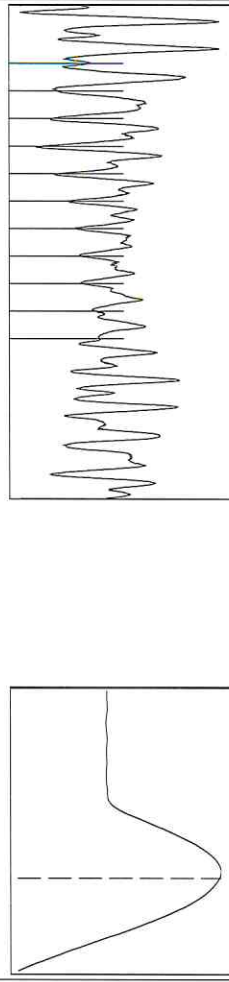
Mail to the Appropriate KCC Conservation Office:

Table with 2 columns: Office Address, Phone. Rows for District Office #1, #2, #3, #4.

Group: Atlas Well: Ben Swingle 5-36 (acquired on: 10/23/24 15:05:52)



Filter Type High Pass Automatic Collar Count Yes  
 Manual Acoustic Velo 1138.24 ft/s Manual JTS/sec 17.9533  
 Time 7.573 sec  
 Joints 139.114 Jts  
 Depth 4409.90 ft

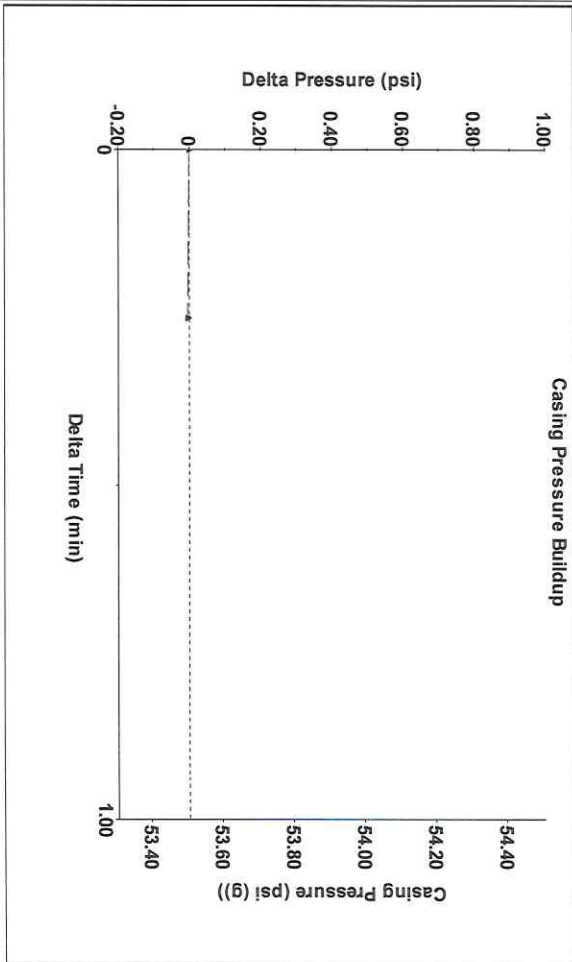


Analysis Method: Automatic

Group: Atlas Well: Ben Swingle 5-36 (acquired on: 10/23/24 15:05:52)

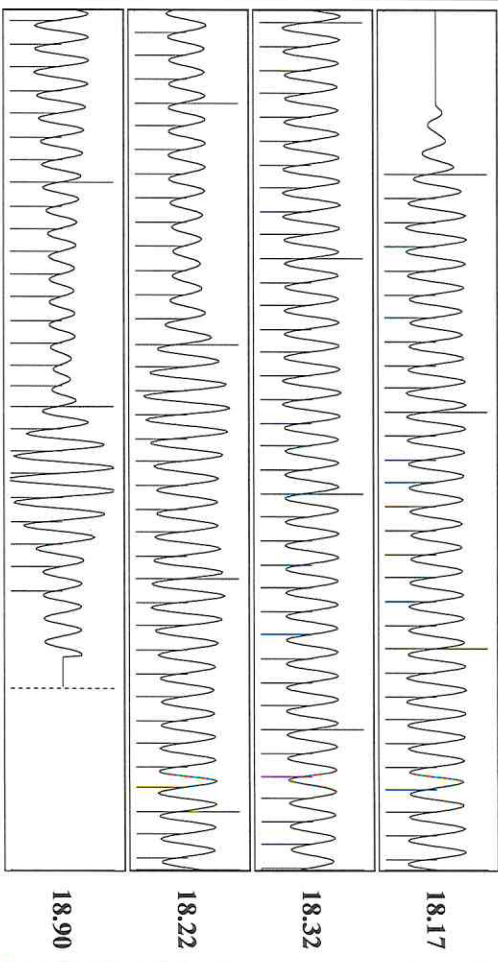
Production Current	Potential	Casing Pressure	Static
Oil - *-	- *- BBL/D	53.5 psi (g)	Oil Column Height MD 0 ft
Water - *-	- *- BBL/D	Casing Pressure Buildup -0.0 psi	Water Column Height MD - *- ft
Gas - *-	- *- Misc/D	0.25 min	
IPR Method	Vogel - *-	Gas/Liquid Interface Pressure 62.4 psi (g)	
PBHP/SBHP	- *-		
Production Efficiency	0.0		
Oil 40 deg.API		Liquid Level Depth 4409.90 ft	
Water 1.05 Sp.Gr.H2O		Pump Intake Depth - *- ft	
Gas 0.83 Sp.Gr.AIR		Formation Depth 4395.00 ft	
Acoustic Velocity	1164.64 ft/s		Static BHP 62.4 psi (g)

Group: Atlas Well: Ben Swingle 5-36 (acquired on: 10/23/24 15:05:52)



Change in Pressure -0.00 psi P174212  
 Change in Time 0.25 min Range 0 - ? psi

Group: Atlas Well: Ben Swingle 5-36 (acquired on: 10/23/24 15:05:52)



Acoustic Velocity 1164.64 ft/s Joints counted 128  
 Joints Per Second 18.3697 Jts/sec Joints to liquid level 139.114  
 Depth to liquid level 4409.9 ft Filter Width 15.9533  
 Automatic Collar Count Yes Time to 1st Collar 0.38 19.9533 7.348

Conservation Division  
District Office No. 2  
3450 N. Rock Road  
Building 600, Suite 601  
Wichita, KS 67226



Phone: 316-337-7400  
<http://kcc.ks.gov/>

Andrew J. French, Chairperson  
Dwight D. Keen, Commissioner  
Annie Kuether, Commissioner

Laura Kelly, Governor

11/08/2024

Saumyadeep Halder  
Atlas Operating LLC  
1900 ST JAMES PLACE SUITE 800  
HOUSTON, TX 77056-4133

Re: Temporary Abandonment  
API 15-095-21899-00-00  
BEN SWINGLE 5-36  
NE/4 Sec.36-30S-09W  
Kingman County, Kansas

Dear Saumyadeep Halder:

"Your temporary abandonment (TA) application for the well listed above has been approved. In accordance with K.A.R. 82-3-111 the TA status of this well will expire 11/08/2025.

- \* If you return this well to service or plug it, please notify the District Office.
- \* If you sell this well you are required to file a Transfer of Operator form, T-1.
- \* If the well will remain temporarily abandoned, you must submit a new TA application, CP-111, before 11/08/2025.

You may contact me at the number above if you have questions.

Very truly yours,

Neil Lake, ECRS"