

KANSAS CORPORATION COMMISSION
OIL & GAS CONSERVATION DIVISION

Form must be Typed
Form must be signed

TEMPORARY ABANDONMENT WELL APPLICATION

All blanks must be complete

OPERATOR: License#
Name:
Address 1:
Address 2:
City: State: Zip:
Contact Person:
Phone:
Contact Person Email:
Field Contact Person:
Field Contact Person Phone:

API No. 15-
Spot Description:
Sec. Twp. S. R.
GPS Location: Lat: Long:
Datum: NAD27 NAD83 WGS84
County: Elevation:
Lease Name: Well #:
Well Type: Oil Gas OG WSW Other:
SWD Permit #: ENHR Permit #:
Gas Storage Permit #:
Spud Date: Date Shut-In:

Table with 7 columns: Conductor, Surface, Production, Intermediate, Liner, Tubing. Rows include Size, Setting Depth, Amount of Cement, Top of Cement, Bottom of Cement.

Casing Fluid Level from Surface: How Determined? Date:
Casing Squeeze(s): to w / sacks of cement, to w / sacks of cement. Date:
Do you have a valid Oil & Gas Lease? Yes No
Depth and Type: Junk in Hole at Tools in Hole at Casing Leaks: Yes No Depth of casing leak(s):
Type Completion: ALT. I ALT. II Depth of: DV Tool: w / sacks of cement Port Collar: w / sack of cement
Packer Type: Size: Inch Set at: Feet
Total Depth: Plug Back Depth: Plug Back Method:

Geological Data:

Table with 4 columns: Formation Name, Formation Top, Formation Base, Completion Information. Rows 1 and 2.

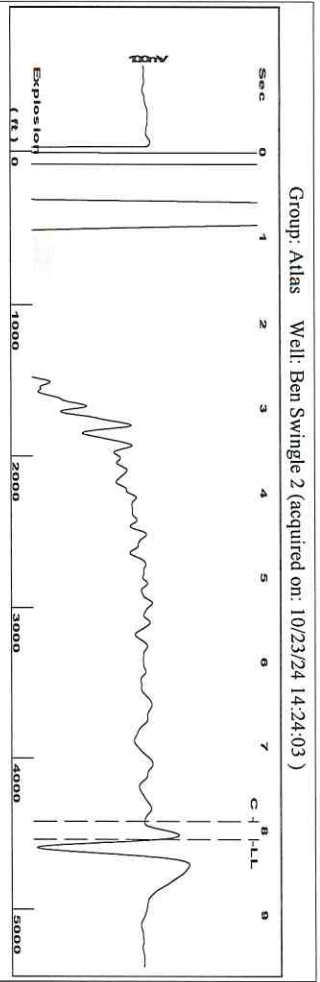
UNDER PENALTY OF PERJURY I HEREBY ATTEST THAT THE INFORMATION CONTAINED HEREIN IS TRUE AND CORRECT TO THE BEST OF MY KNOWLEDGE

Submitted Electronically

Do NOT Write in This Space - KCC USE ONLY
Date Tested: Results: Date Plugged: Date Repaired: Date Put Back in Service:
Review Completed by: Comments:
TA Approved: Yes Denied Date:

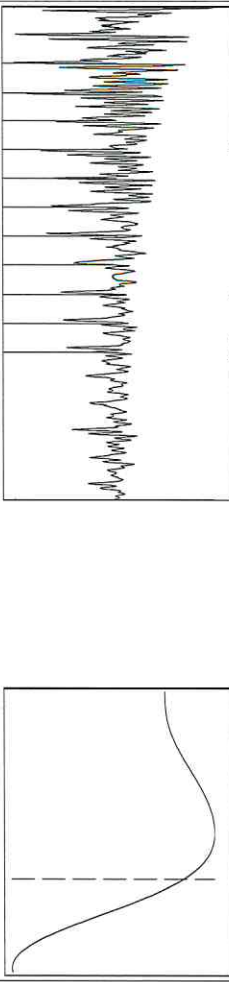
Mail to the Appropriate KCC Conservation Office:

Table with 2 columns: Office Address, Phone. Rows for District Office #1, #2, #3, #4.



Filter Type High Pass Automatic Collar Count Yes  
Manual Acoustic Velo 1085.62 ft/s Manual JTS/sec 17.1233

Time 8.112 sec  
Joints 143.23 Jts  
Depth 4540.38 ft



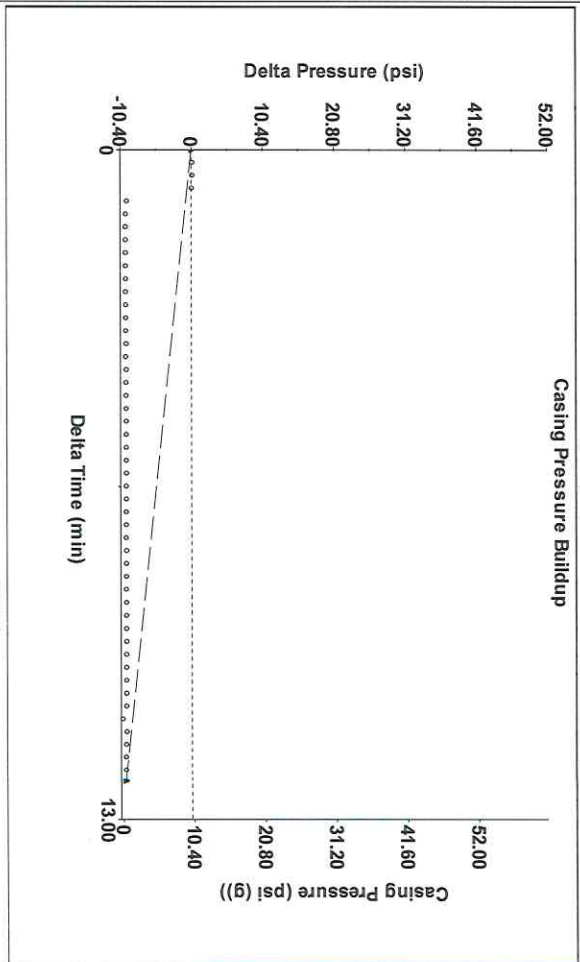
Analysis Method: Automatic

Group: Atlas Well: Ben Swingle 2 (acquired on: 10/23/24 14:24:03)

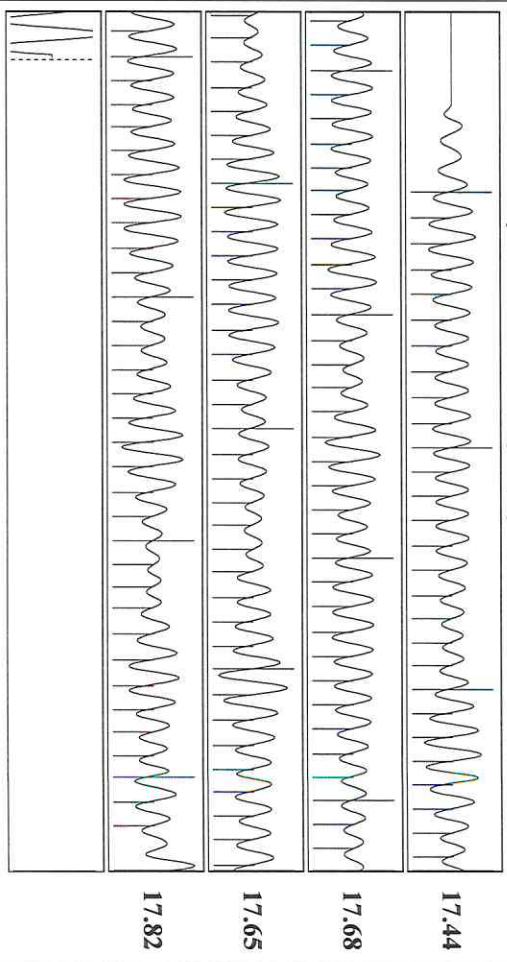
Production Current	Potential	Casing Pressure	Producing
Oil -*- BBL/D	-*- BBL/D	10.1 psi (g)	-*- psi (g)
Water -*- BBL/D	-*- BBL/D	Casing Pressure Buildup	Producing BHP
Gas -*- Mscf/D	-*- Mscf/D	-9.7 psi	13.5 psi (g)
IPR Method	Vogel	Gas/Liquid Interface Pressure	Static BHP
PBHP/SBHP	-*-	12.25 min	-*- psi (g)
Production Efficiency	0.0	13.6 psi (g)	
Oil 40 deg API		Liquid Level Depth	Pump Intake
Water 1.05 Sp.Gr.H2O		4540.38 ft	-*- psi (g)
Gas 0.88 Sp.Gr.AIR		Pump Intake Depth	Producing BHP
Acoustic Velocity 1119.42 ft/s		-*- ft	13.5 psi (g)
		Formation Depth	Static BHP
		4420.00 ft	-*- psi (g)



Group: Atlas Well: Ben Swingle 2 (acquired on: 10/23/24 14:24:03)



Group: Atlas Well: Ben Swingle 2 (acquired on: 10/23/24 14:24:03)



Acoustic Velocity	1119.42 ft/s	Joints counted	132
Joints Per Second	17.6565 Jts/sec	Joints to Liquid level	143.23
Depth to liquid level	4540.38 ft	Filter Width	15.1233
Automatic Collar Count	Yes	Time to 1st Collar	0.42

Conservation Division  
District Office No. 2  
3450 N. Rock Road  
Building 600, Suite 601  
Wichita, KS 67226



Phone: 316-337-7400  
<http://kcc.ks.gov/>

Andrew J. French, Chairperson  
Dwight D. Keen, Commissioner  
Annie Kuether, Commissioner

Laura Kelly, Governor

11/08/2024

Saumyadeep Halder  
Atlas Operating LLC  
1900 ST JAMES PLACE SUITE 800  
HOUSTON, TX 77056-4133

Re: Temporary Abandonment  
API 15-095-21679-00-00  
BEN SWINGLE 2-36  
NE/4 Sec.36-30S-09W  
Kingman County, Kansas

Dear Saumyadeep Halder:

"Your temporary abandonment (TA) application for the well listed above has been approved. In accordance with K.A.R. 82-3-111 the TA status of this well will expire 11/08/2025.

- \* If you return this well to service or plug it, please notify the District Office.
- \* If you sell this well you are required to file a Transfer of Operator form, T-1.
- \* If the well will remain temporarily abandoned, you must submit a new TA application, CP-111, before 11/08/2025.

You may contact me at the number above if you have questions.

Very truly yours,

Neil Lake, ECRS"