

KANSAS CORPORATION COMMISSION
OIL & GAS CONSERVATION DIVISION

TEMPORARY ABANDONMENT WELL APPLICATION

OPERATOR: License#
Name:
Address 1:
Address 2:
City: State: Zip:
Contact Person:
Phone:
Contact Person Email:
Field Contact Person:
Field Contact Person Phone:

API No. 15-
Spot Description:
Sec. Twp. S. R.
GPS Location: Lat: Long:
Datum:
County: Elevation:
Lease Name: Well #:
Well Type:
SWD Permit #: ENHR Permit #:
Gas Storage Permit #:
Spud Date: Date Shut-In:

Table with 7 columns: Conductor, Surface, Production, Intermediate, Liner, Tubing. Rows include Size, Setting Depth, Amount of Cement, Top of Cement, Bottom of Cement.

Casing Fluid Level from Surface: How Determined? Date:
Casing Squeeze(s): to w / sacks of cement, to w / sacks of cement. Date:
Do you have a valid Oil & Gas Lease? Yes No
Depth and Type: Junk in Hole at Tools in Hole at Casing Leaks: Yes No Depth of casing leak(s):
Type Completion: ALT. I ALT. II Depth of: DV Tool: w / sacks of cement Port Collar: w / sack of cement
Packer Type: Size: Inch Set at: Feet
Total Depth: Plug Back Depth: Plug Back Method:

Geological Data:

Table with 4 columns: Formation Name, Formation Top, Formation Base, Completion Information. Rows 1 and 2.

UNDER PENALTY OF PERJURY I HEREBY ATTEST THAT THE INFORMATION CONTAINED HEREIN IS TRUE AND CORRECT TO THE BEST OF MY KNOWLEDGE

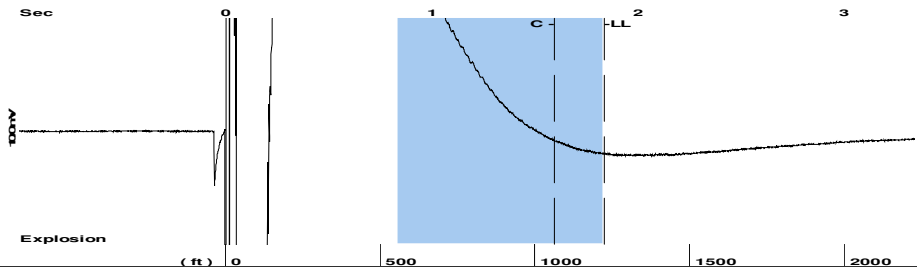
Submitted Electronically

Do NOT Write in This Space - KCC USE ONLY
Date Tested: Results: Date Plugged: Date Repaired: Date Put Back in Service:
Review Completed by: Comments:
TA Approved: Yes Denied Date:

Mail to the Appropriate KCC Conservation Office:

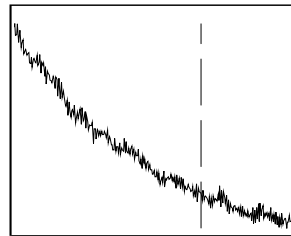
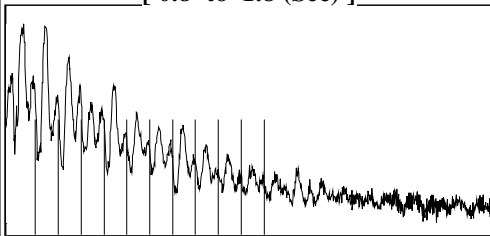
Table with 2 columns: Office Address, Phone. Rows for District Office #1, #2, #3, #4.

Group: Mitchell Energy corp Well: Miller #1 (acquired on: 11/07/24 09:50:22)



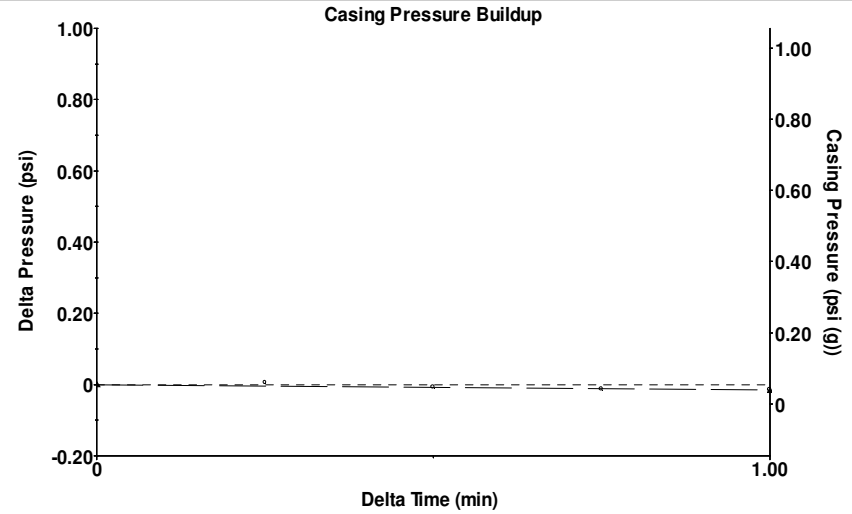
Filter Type High Pass Automatic Collar Count Yes Time 1.838 sec
 Manual Acoustic Velo 1327.66 ft/s Manual JTS/sec 21.2766 Joints 39.2256 Jts
 Depth 1223.84 ft

[0.8 to 1.8 (Sec)]



Analysis Method: Automatic

Group: Mitchell Energy corp Well: Miller #1 (acquired on: 11/07/24 09:50:22)



Change in Pressure -0.02 psi PT16195
 Change in Time 1.00 min Range 0 - ? psi

Group: Mitchell Energy corp Well: Miller #1 (acquired on: 11/07/24 09:50:22)

Production Current Potential
 Oil - * - BBL/D
 Water - * - BBL/D
 Gas - * - Mscf/D

IPR Method Vogel
 PBHP/SBHP - * -
 Production Efficiency 0.0

Oil 40 deg.API
 Water 1.05 Sp.Gr.H2O
 Gas 0.66 Sp.Gr.AIR

Acoustic Velocity 1331.71 ft/s

Formation Submergence
 Total Gaseous Liquid Column HT (TVD) 3521 ft
 Equivalent Gas Free Liquid HT (TVD) 3521 ft

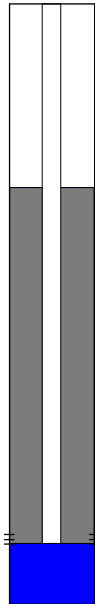
Acoustic Test

Casing Pressure 0.1 psi (g)
 Casing Pressure Buildup -0.016 psi
 1.00 min
 Gas/Liquid Interface Pressure 0.5 psi (g)

Liquid Level Depth 1223.84 ft

Pump Intake Depth 4745.00 ft

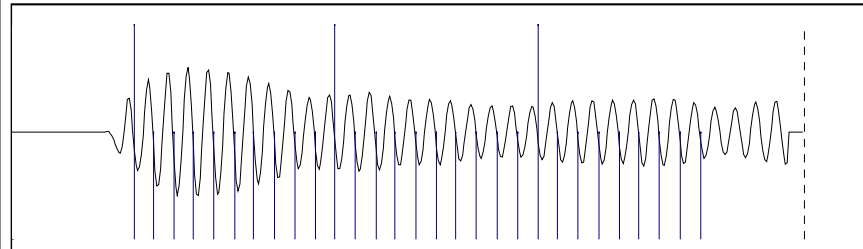
Formation Depth 4698.00 ft



Producing
 Annular Gas Flow 0 Mscf/D
 % Liquid 100 %

Pump Intake 1154.8 psi (g)
 Producing BHP 1140.4 psi (g)
 Static BHP - * - psi (g)

Group: Mitchell Energy corp Well: Miller #1 (acquired on: 11/07/24 09:50:22)



21.34

Acoustic Velocity 1331.71 ft/s Joints counted 28
 Joints Per Second 21.3415 jts/sec Joints to liquid level 39.2256
 Depth to liquid level 1223.84 ft Filter Width 19.2766 23.2766
 Automatic Collar Count Yes Time to 1st Collar 0.284 1.596

Conservation Division
District Office No. 1
210 E. Frontview, Suite A
Dodge City, KS 67801



Phone: 620-682-7933
<http://kcc.ks.gov/>

Andrew J. French, Chairperson
Dwight D. Keen, Commissioner
Annie Kuether, Commissioner

Laura Kelly, Governor

11/27/2024

Todd Moore
Kiowa Gas Company
8150 N CENTRAL EXPY STE 750
DALLAS, TX 75206-1841

Re: Temporary Abandonment
API 15-097-20177-00-00
MILLER 1
NW/4 Sec.25-27S-18W
Kiowa County, Kansas

Dear Todd Moore:

"Your temporary abandonment (TA) application for the well listed above has been approved. In accordance with K.A.R. 82-3-111 the TA status of this well will expire 11/27/2025.

- * If you return this well to service or plug it, please notify the District Office.
- * If you sell this well you are required to file a Transfer of Operator form, T-1.
- * If the well will remain temporarily abandoned, you must submit a new TA application, CP-111, before 11/27/2025.

You may contact me at the number above if you have questions.

Very truly yours,

Michael Maier"