

KANSAS CORPORATION COMMISSION
OIL & GAS CONSERVATION DIVISION

TEMPORARY ABANDONMENT WELL APPLICATION

OPERATOR: License#
Name:
Address 1:
Address 2:
City: State: Zip:
Contact Person:
Phone:
Contact Person Email:
Field Contact Person:
Field Contact Person Phone:

API No. 15-
Spot Description:
Sec. Twp. S. R.
GPS Location: Lat: Long:
Datum: NAD27 NAD83 WGS84
County: Elevation:
Lease Name: Well #:
Well Type: Oil Gas OG WSW Other:
SWD Permit #: ENHR Permit #:
Gas Storage Permit #:
Spud Date: Date Shut-In:

Table with 7 columns: Conductor, Surface, Production, Intermediate, Liner, Tubing. Rows include Size, Setting Depth, Amount of Cement, Top of Cement, Bottom of Cement.

Casing Fluid Level from Surface: How Determined? Date:
Casing Squeeze(s): to w / sacks of cement, to w / sacks of cement. Date:
Do you have a valid Oil & Gas Lease? Yes No
Depth and Type: Junk in Hole at Tools in Hole at Casing Leaks: Yes No Depth of casing leak(s):
Type Completion: ALT. I ALT. II Depth of: DV Tool: w / sacks of cement Port Collar: w / sack of cement
Packer Type: Size: Inch Set at: Feet
Total Depth: Plug Back Depth: Plug Back Method:

Geological Data:

Table with 4 columns: Formation Name, Formation Top, Formation Base, Completion Information. Rows 1 and 2.

UNDER PENALTY OF PERJURY I HEREBY ATTEST THAT THE INFORMATION CONTAINED HEREIN IS TRUE AND CORRECT TO THE BEST OF MY KNOWLEDGE

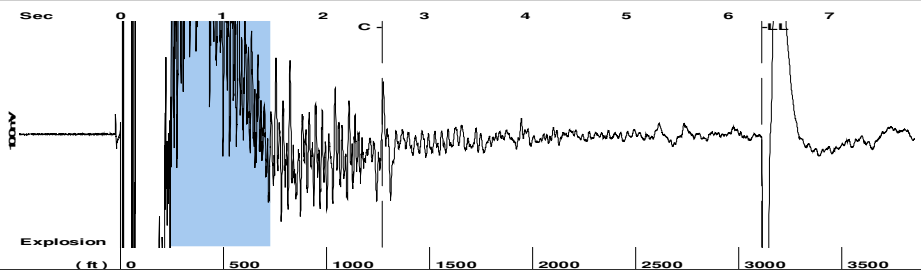
Submitted Electronically

Do NOT Write in This Space - KCC USE ONLY
Date Tested: Results: Date Plugged: Date Repaired: Date Put Back in Service:
Review Completed by: Comments:
TA Approved: Yes Denied Date:

Mail to the Appropriate KCC Conservation Office:

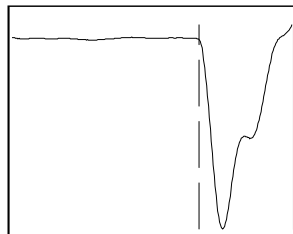
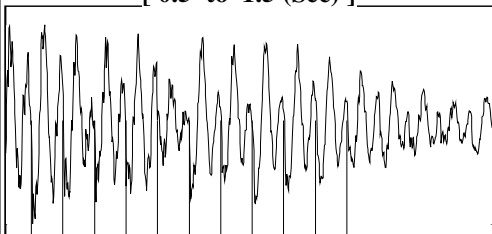
Table with 2 columns: Office Address, Phone. Rows for District Office #1, #2, #3, #4.

Group: Novy Oil & Gas Well: Hook #1 (acquired on: 11/26/24 14:20:04)



Filter Type High Pass Automatic Collar Count Yes Time 6.335 sec
 Manual Acoustic Velo 978.395 ft/s Manual JTS/sec 15.4321 Joints 98.1325 Jts
 Depth 3110.80 ft

[0.5 to 1.5 (Sec)]



Analysis Method: Automatic

Group: Novy Oil & Gas Well: Hook #1 (acquired on: 11/26/24 14:20:04)

NO PRESSURE DATA AVAILABLE

Change in Pressure 0.00 psi PT15262
 Range 0 - ? psi
 Change in Time 0.00 min

Group: Novy Oil & Gas Well: Hook #1 (acquired on: 11/26/24 14:20:04)

Production Current Potential
 Oil - * - 0.0 BBL/D
 Water - * - 0.0 BBL/D
 Gas - * - 0.0 Mscf/D

IPR Method Vogel
 PBHP/SBHP 0.94
 Production Efficiency 9.8

Oil 40 deg.API
 Water 1.05 Sp.Gr.H2O
 Gas 1.00 Sp.Gr.AIR

Acoustic Velocity 982.1 ft/s

Casing Pressure -0.8 psi (g)
 Casing Pressure Buildup - * - psi
 - * - min
 Gas/Liquid Interface Pressure 0.8 psi (g)

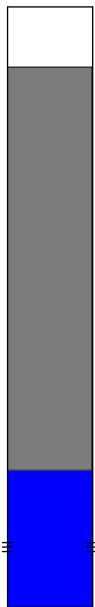
Liquid Level Depth 3110.80 ft

Pump Intake Depth - * - ft

Formation Depth 3700.00 ft

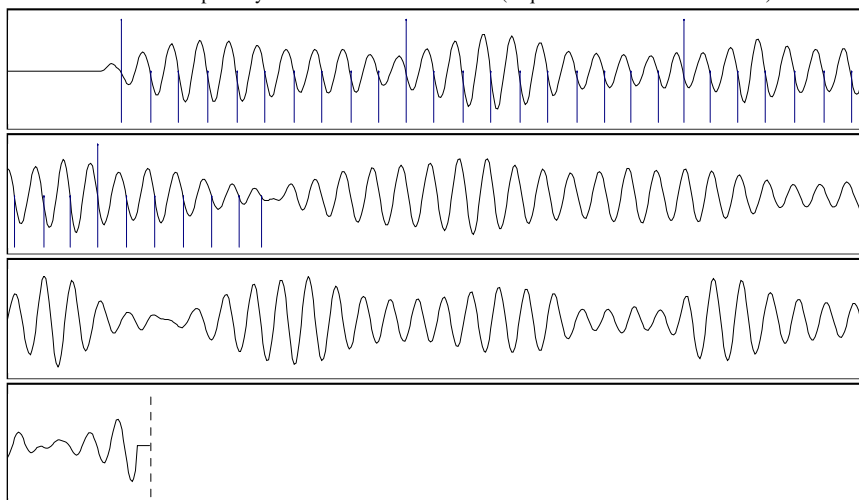
Formation Submergence
 Total Gaseous Liquid Column HT (TVD) 589 ft
 Equivalent Gas Free Liquid HT (TVD) 589 ft

Acoustic Test



Producing
 Annular Gas Flow 0 Mscf/D
 % Liquid 100 %
 Pump Intake - * - psi (g)
 Producing BHP 268.6 psi (g)
 Static BHP 285.4 psi (g)

Group: Novy Oil & Gas Well: Hook #1 (acquired on: 11/26/24 14:20:04)



Acoustic Velocity 982.1 ft/s Joints counted 36
 Joints Per Second 15.4905 jts/sec Joints to liquid level 98.1325
 Depth to liquid level 3110.8 ft Filter Width 13.4321 17.4321
 Automatic Collar Count Yes Time to 1st Collar 0.264 2.588

Conservation Division
District Office No. 2
3450 N. Rock Road
Building 600, Suite 601
Wichita, KS 67226



Phone: 316-337-7400
<http://kcc.ks.gov/>

Andrew J. French, Chairperson
Dwight D. Keen, Commissioner
Annie Kuether, Commissioner

Laura Kelly, Governor

12/02/2024

Michael E. Novy
Novy Oil & Gas, Inc.
PO BOX 559
GODDARD, KS 67052-0559

Re: Temporary Abandonment
API 15-155-21218-00-00
HOOK 1
SE/4 Sec.19-23S-10W
Reno County, Kansas

Dear Michael E. Novy:

"Your temporary abandonment (TA) application for the well listed above has been approved. In accordance with K.A.R. 82-3-111 the TA status of this well will expire 11/29/2025.

- * If you return this well to service or plug it, please notify the District Office.
- * If you sell this well you are required to file a Transfer of Operator form, T-1.
- * If the well will remain temporarily abandoned, you must submit a new TA application, CP-111, before 11/29/2025.

You may contact me at the number above if you have questions.

Very truly yours,

Virgil Clothier"