

KANSAS CORPORATION COMMISSION
OIL & GAS CONSERVATION DIVISION

Form must be Typed
Form must be signed

TEMPORARY ABANDONMENT WELL APPLICATION

All blanks must be complete

OPERATOR: License#
Name:
Address 1:
Address 2:
City: State: Zip:
Contact Person:
Phone:
Contact Person Email:
Field Contact Person:
Field Contact Person Phone:

API No. 15-
Spot Description:
Sec. Twp. S. R.
feet from N / S Line of Section
feet from E / W Line of Section
GPS Location: Lat: , Long:
Datum: NAD27 NAD83 WGS84
County: Elevation: GL KB
Lease Name: Well #:
Well Type: Oil Gas OG WSW Other:
SWD Permit #: ENHR Permit #:
Gas Storage Permit #:
Spud Date: Date Shut-In:

Table with 7 columns: Conductor, Surface, Production, Intermediate, Liner, Tubing. Rows include Size, Setting Depth, Amount of Cement, Top of Cement, Bottom of Cement.

Casing Fluid Level from Surface: How Determined? Date:
Casing Squeeze(s): to w / sacks of cement, to w / sacks of cement. Date:
Do you have a valid Oil & Gas Lease? Yes No
Depth and Type: Junk in Hole at Tools in Hole at Casing Leaks: Yes No Depth of casing leak(s):
Type Completion: ALT. I ALT. II Depth of: DV Tool: w / sacks of cement Port Collar: w / sack of cement
Packer Type: Size: Inch Set at: Feet
Total Depth: Plug Back Depth: Plug Back Method:

Geological Data:

Table with 4 columns: Formation Name, Formation Top, Formation Base, Completion Information. Rows 1 and 2.

UNDER PENALTY OF PERJURY I HEREBY ATTEST THAT THE INFORMATION CONTAINED HEREIN IS TRUE AND CORRECT TO THE BEST OF MY KNOWLEDGE

Submitted Electronically

Do NOT Write in This Space - KCC USE ONLY
Date Tested: Results: Date Plugged: Date Repaired: Date Put Back in Service:
Review Completed by: Comments:
TA Approved: Yes Denied Date:

Mail to the Appropriate KCC Conservation Office:

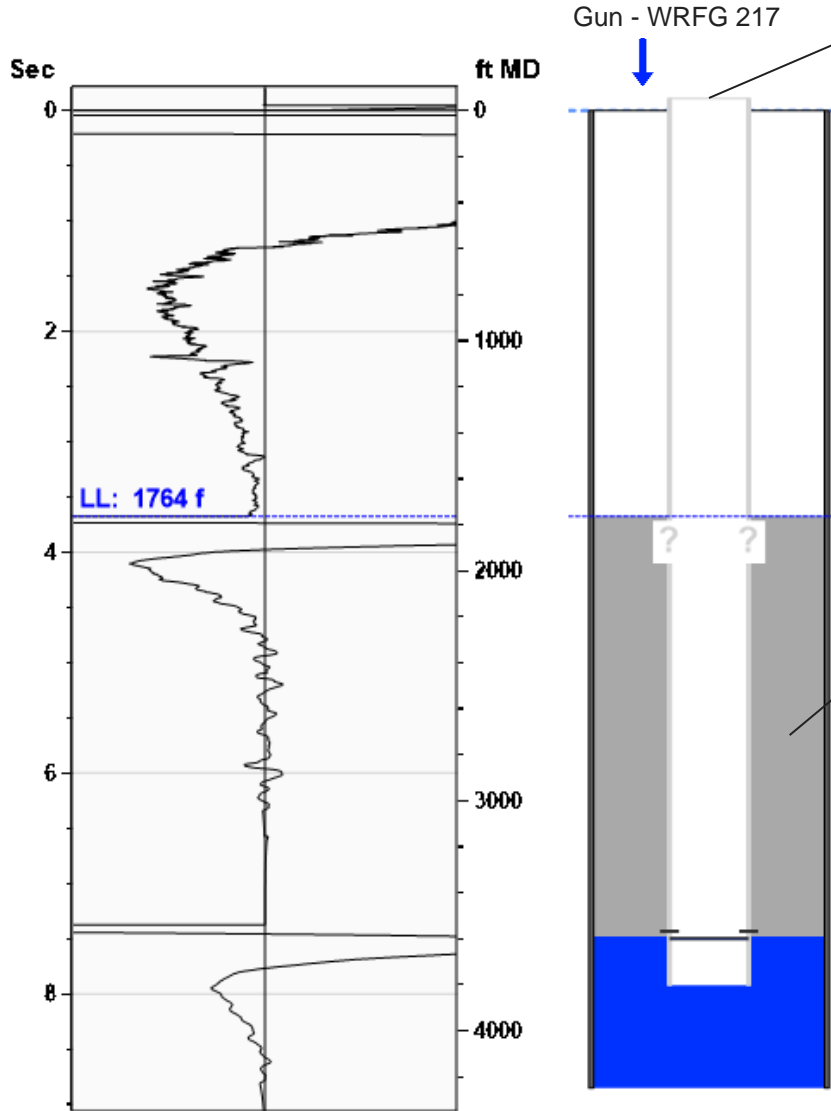
Table with 3 columns: District Office #, Address, Phone. Rows 1-4.

**Liquid Level**

**1764 ft MD**

Fluid Above Tubing  
Gas Free Above Tubing

1827 ft TVD  
1827 ft TVD



**Production**

Date Entered	11/12/24		
Oil	Current	Potential	BBL/D
Water	**	**	BBL/D
Gas	**	**	Mscf/D
IPR Method	Vogel		
PBHP/SBHP	inf		
Producing Efficiency	0.00%		

**Casing Pressure**

Pressure	** psi (g)
----------	------------

**Annular Gas Flow**

Gas Flow	** Mscf/D
----------	-----------

**Fluid Properties**

% Liquid Above Tubing	100.00%
% Liquid Below Tubing	**

**Depths**

Tubing Depth	0 ft
Formation Depth	3591 ft

**Wellbore Pressures**

TIP	**
PBHP	611.4 psi (g)
SBHP	0.0 psi (g)
Gas/Liq Interface	0.0 psi (g)

**Acoustic Velocity**

Acoustic Velocity 960 ft/s  
 Joints Per Sec. 15.14 Jts/sec  
 Joints To Liquid 55.63 Jts  
 Gas Gravity 0.7000 Air = 1

Entered From Known Acoustic Velocity

**Casing Pressure Buildup**

**No Pressure Acquired**

Casing Pressure \*\* psi (g)  
 Buildup \*\* psi (g)  
 Buildup Time \*\* sec  
 Gas Gravity from Acoustic Velocity 0.7000 Air = 1

**Comments and Recommendations**

Conservation Division  
District Office No. 2  
3450 N. Rock Road  
Building 600, Suite 601  
Wichita, KS 67226



Phone: 316-337-7400  
<http://kcc.ks.gov/>

Andrew J. French, Chairperson  
Dwight D. Keen, Commissioner  
Annie Kuether, Commissioner

Laura Kelly, Governor

12/02/2024

Tracy Black  
Herman L. Loeb, LLC  
PO BOX 838  
LAWRENCEVILLE, IL 62439-0838

Re: Temporary Abandonment  
API 15-155-01690-00-00  
BLOCKER H W 1  
SE/4 Sec.19-25S-04W  
Reno County, Kansas

Dear Tracy Black:

"Your temporary abandonment (TA) application for the well listed above has been approved. In accordance with K.A.R. 82-3-111 the TA status of this well will expire 08/15/2025.

- \* If you return this well to service or plug it, please notify the District Office.
- \* If you sell this well you are required to file a Transfer of Operator form, T-1.
- \* If the well will remain temporarily abandoned, you must submit a new TA application, CP-111, before 08/15/2025.

You may contact me at the number above if you have questions.

Very truly yours,

Virgil Clothier"