

ALT ☐ I ☐ II ☐ III Approved by: _____ Date: _____

Form	ACO1 - Well Completion
Operator	Dixon Operating Company, LLC
Well Name	KOPPITZ 9
Doc ID	1678304

All Electric Logs Run

DIL
PE
MEL
SONIC

Form	ACO1 - Well Completion
Operator	Dixon Operating Company, LLC
Well Name	KOPPITZ 9
Doc ID	1678304

Casing

Purpose Of String	Size Hole Drilled	Size Casing Set	Weight	Setting Depth	Type Of Cement	Number of Sacks Used	Type and Percent Additives
Surface	12.25	8.625	23	272	60/40 poz	200	3% CC
Production	7.875	5.5	15.5	5417	common	240	12 bbl mud flush

CEMENT TREATMENT REPORT

Customer:	DIXON OPERATING CO. LLC	Well:	KOPPITZ 9	Ticket:	WP 3574
City, State:		County:	BARBER, KS.	Date:	11/1/2022
Field Rep:		S.T.R.:	2-35S-12W	Service:	SURFACE PIPE

Downhole Information	
Hole Size:	12 1/4 in
Hole Depth:	272 ft
Casing Size:	8 5/8 in
Casing Depth:	267.9 ft
Tubing / Liner:	in
PLUG DEPTH:	247 ft
Tool / Packer:	
Tool Depth:	ft
Displacement:	15.8 bbls

24#

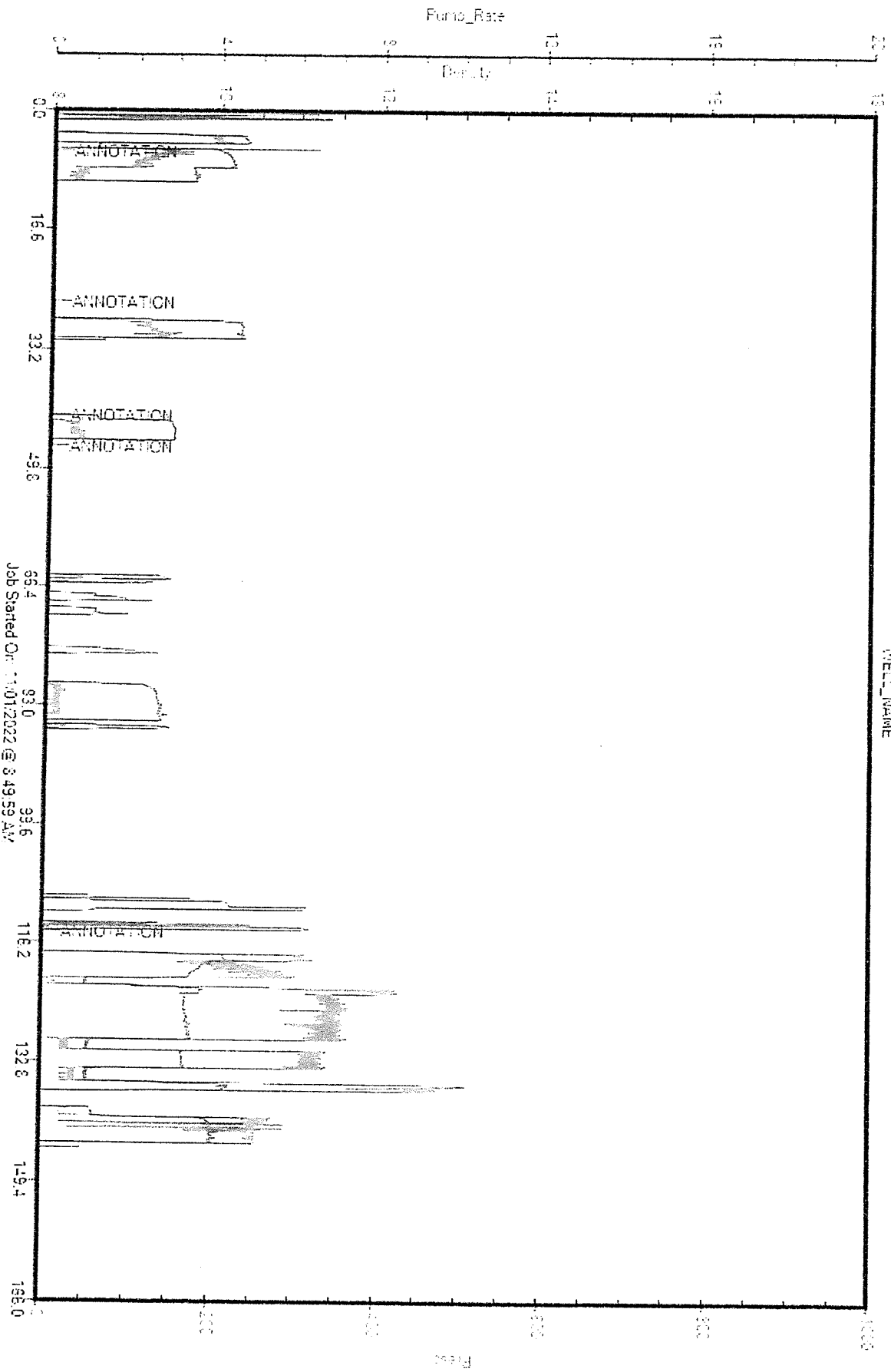
Calculated Slurry - Lead	
Blend:	
Weight:	ppg
Water / Sx:	gal / sx
Yield:	ft ³ / sx
Annular Bbls / Ft:	bbs / ft.
Depth:	ft
Annular Volume:	0.0 bbls
Excess:	
Total Slurry:	0.0 bbls
Total Sacks:	0 sx

Calculated Slurry - Tail	
Blend:	60/40/2 POZMIX
Weight:	14.8 ppg
Water / Sx:	5.2 gal / sx
Yield:	1.21 ft ³ / sx
Annular Bbls / Ft:	bbs / ft.
Depth:	ft
Annular Volume:	0 bbls
Excess:	
Total Slurry:	43.1 bbls
Total Sacks:	200 sx

[illegible]

CREW		UNIT	SUMMARY		
Cementor:	LESLEY	936	Average Rate	Average Pressure	Total Fluid
Pump Operator:	JULLIAN	181-522	3.2 bpm	260 psi	78 bbls
Bulk #1:	TREVINO	524-533			
Bulk #2:					

CUSTOMER
WELL_NAME



DIXON OPER. KOPITZ 2 SURFACE WP 3574 IMP.acddb1

TERMS: Cash in advance unless Hurricane Services Inc. (HSI) has approved credit prior to sale. Credit terms of sale for approved accounts are total invoice due on or before the 30th day from the date of invoice. Past due accounts shall pay interest on the balance past due at the rate of 1 1/2% per month or the maximum allowable by applicable state or federal laws. In the event it is necessary to employ an agency and/or attorney to affect the collection, Customer hereby agrees to pay all fees directly or indirectly incurred for such collection. In the event that Customer's account with HSI becomes delinquent, HSI has the right to revoke any discounts previously applied in arriving at net invoice price. Upon revocation, the full invoice price without discount is immediately due and subject to collection. Prices quoted are estimates only and are good for 30 days from the date of issue. Pricing does not include federal, state, or local taxes, or royalties and stated price adjustments. Actual charges may vary depending upon time, equipment, and material ultimately required to perform these services. Any discount is based on 30 days net payment terms or cash. **DISCLAIMER NOTICE:** Technical data is presented in good faith, but no warranty is stated or implied. HSI assumes no liability for advice or recommendations made concerning the results from the use of any product or service. The information presented is a best estimate of the actual results that may be achieved and should be used for comparison purposes and HSI makes no guarantee of future production performance. Customer represents and warrants that well and all associated equipment in acceptable condition to receive services by HSI. Likewise, the customer guarantees proper operational care of all customer owned equipment and property while HSI is on location performing services. The authorization below acknowledges the receipt and acceptance of all terms/conditions stated above, and Hurricane has provided accurate well information in determining taxable services.

CUSTOMER AUTHORIZATION SIGNATURE

ftv: 15-2021/01/25
mplv: 339-2022/10/05



CEMENT TREATMENT REPORT

Customer: Dixon Operating Company LLC

City, State: Hardtner Kansas

Field Rep: Brad Tatro

Well: Koppitz 9

County: Barber Kansas

S-T-R: 2-35s-12w

Ticket: wp 3605

Date: 11/9/2022

Service: Production Casing

Downhole Information

Hole Size: 7 7/8 in
Hole Depth: 5425 ft
Casing Size: 5 1/2 in
Casing Depth: 5417 ft
Tubing / Liner: in
Depth: ft
Tool / Packer:
Tool Depth: ft
Displacement: 132.0 bbls

Calculated Slurry - Lead

Blend: H-Long
Weight: 15.0 ppg
Water / Sx: 5.7 gal / sx
Yield: 1.43 ft³ / sx
Annular Bbls / Ft.: bbs / ft.
Depth: ft
Annular Volume: 0.0 bbls
Excess:
Total Slurry: 61.0 bbls
Total Sacks: 240 sx

Calculated Slurry - Tail

Blend: H-plug
Weight: 13.7 ppg
Water / Sx: 6.9 gal / sx
Yield: 1.43 ft³ / sx
Annular Bbls / Ft.: bbs / ft.
Depth: ft
Annular Volume: 0 bbls
Excess:
Total Slurry: 12.7 bbls
Total Sacks: 50 sx

TIME	RATE	PSI	STAGE BBLs	TOTAL BBLs	REMARKS
12:30 AM			-	-	on location job and safety
12:40 AM			-	-	spot btrucks and rig up
			-	-	turbolizers 4,6,8,10,12,14,16,18,20,22
			-	-	basket
2:00 AM			-	-	start casing in the hole
4:00 AM			-	-	casing on bottom and circulate
			-	-	
5:00 AM					start flush
	3.0	100.0	5.0		2% kcl
	3.0	100.0	12.0	12.0	mud flush
	3.0	100.0	5.0	17.0	2% kcl
5:10 AM	2.0	-	12.7		plug rat hole 30 sacks plug mouse hole 20 sacks
5:20 AM					start cement down hole
	5.0	350.0			mix 240 sacks
5:35 AM					cement in and shut down
					wash pump and lines and release plug
5:40 AM					start displacement
	5.0	140.0	10.0		
	5.5	140.0	60.0		
	5.5	140.0	80.0		
	5.5	250.0	90.0		
	5.0	750.0	120.0		
6:15 AM	3.5	950.0	132.0		plug down
					took pressure from 950 to 1500.....release pressure and plug did hold

CREW

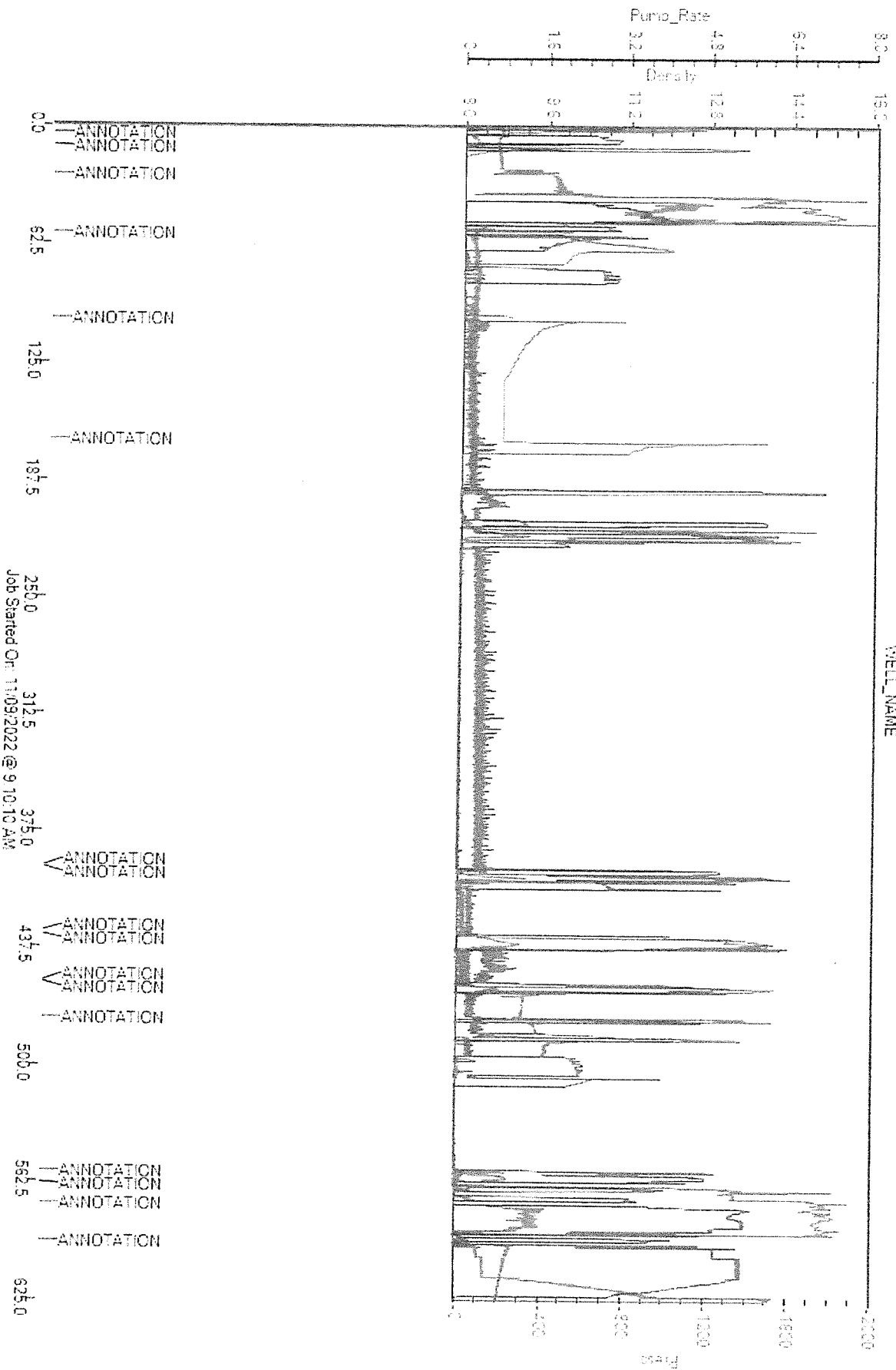
UNIT

Cementor: M Brungardt 916
Pump Operator: A Clifton 179/521
Bulk #1: K Jullan 182/534
Bulk #2:

SUMMARY

Average Rate: 4.2 bpm
Average Pressure: 275 psi
Total Fluid: 527 bbls

CUSTOMER
WELL_NAME



TERMS: Cash in advance unless Hurricane Services Inc. (HSI) has approved credit prior to sale. Credit terms of sale for approved accounts are total invoice due on or before the 30th day from the date of invoice. Past due accounts shall pay interest on the balance past due at the rate of 1 1/2% per month or the maximum allowable by applicable state or federal laws. In the event it is necessary to employ an agency and/or attorney to affect the collection, Customer hereby agrees to pay all fees directly or indirectly incurred for such collection. In the event that Customer's account with HSI becomes delinquent, HSI has the right to revoke any discounts previously applied in arriving at net invoice price. Upon revocation, the full invoice price without discount is immediately due and subject to collection. Prices quoted are estimates only and are good for 30 days from the date of issue. Pricing does not include federal, state, or local taxes, or royalties and stated price adjustments. Actual charges may vary depending upon time, equipment, and material ultimately required to perform these services. Any discount is based on 30 days net payment terms or cash. **DISCLAIMER NOTICE:** Technical data is presented in good faith, but no warranty is stated or implied. HSI assumes no liability for advice or recommendations made concerning the results from the use of any product or service. The information presented is a best estimate of the actual results that may be achieved and should be used for comparison purposes and HSI makes no guarantee of future production performance. Customer represents and warrants that well and all associated equipment in acceptable condition to receive services by HSI. Likewise, the customer guarantees proper operational care of all customer owned equipment and property while HSI is on location performing services. The authorization below acknowledges the receipt and acceptance of all terms/conditions stated above, and Hurricane has been provided accurate wall information in determining taxable services.

ftv: 15-2021/01/25
mply: 339-2022/10/05

GEOLOGIST'S REPORT
DRILLING TIME AND SAMPLE LOG

COMPANY **DIXON OPERATING CO.,LLC**

LEASE **Koppitz #9**

FIELD **1980' FNL, 1980' FEL**

LOCATION **2. TWSP 35S ROE 12W**

COUNTY **Barber STATE Kansas**

CONTRACTOR **Duke Drilling**

SPUD **11-1-22** COMP **11-8-22**

RTD **5430'** LTD **5425'**

MUD UP **3300'** TYPE MUD **Chemical**

SAMPLES SAVED FROM **3900'** to RTD

DRILLING TIME KEPT FROM **3900'** to RTD

SAMPLES EXAMINED FROM **3900'** to RTD

GEOLOGICAL SUPERVISION FROM **4200'** to RTD

GEOLOGIST ON WELL **Tim Priest**

By: Eli

Fract. Micro. Sonic

FORMATION TOPS

Hebert Shale

Kansas City

B/KC

Cherokee Shale

Mississippian

Kinderhook

Minner Sand

Viola

Simpson Sand

ELEVATIONS

KB 1393'

DF

GL 1380'

Measurements Are All

From KB

CASING

CONDUCTION N/A

SURFACE 8-5/8" @ 267'

PRODUCTION

ELECTRICAL

CD/D/SP/PE

Fract. Micro. Sonic

By: Eli

FORMATION TOPS

ELECTRIC LOG

Hebert Shale

Kansas City

B/KC

Cherokee Shale

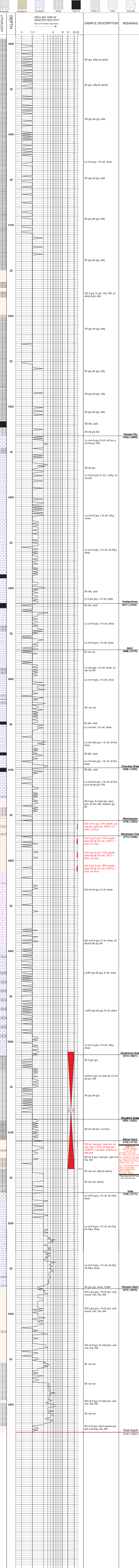
Mississippian

Kinderhook

Minner Sand

Viola

Simpson Sand



REMARKS Due to the positive shows and results of the DST, it was decided to set production casing to further evaluate the well.

Respectfully Submitted,

API #15-007-24447

Tim Priest
Petroium Geologist

Mud-Co / Service Mud. Inc.

100 S. Main St., Suite #310, Wichita, Ks. 67202

Report: **9**

Daily Drilling Mud Report

Date: **11/08/22** Depth: **5430**

Operator Dixon Operating Co. LLC.	Contractor Duke Drilling	Rig No. 7
Address Rig	Address Rig	Spud Date 11/01/22
Report for Mr. Ryan Dixon, Tim Priest	Report for Mr. Tim Arell	Section 2 Twp 35s Range 12w
Well Name & No. #9 Koppitz	County Barber	State Kansas

Operation		Casing		Mud Volume (BBL)		Circulation Data			
Present Activity Short Trip f/log		8 5/8	in. at 267	Hole 462	Pits 400	Liner Size 6	Stroke 15	Opposite Drill Pipe 202	Pump Pressure -
Bit Size (in.) 7 7/8	No 2	Intermediate in. at		Total Circulating Vol. 862		Est.Hole/DS capacities 8.5 2.7059		Opposite Drill Collars 367	Pump Make National
Drill pipe sz 4 1/2	Type XH	Production / Liner in. at		Volume in Storage 0		BBI/ Strk 0.146	Strk / Min. 56	Bottoms Up (Min.) 48	Pump Model K500A
Drill Collar size 6 1/4	550	Drilling mud type Chemical				BBL /Min. 8.2	GAL/Min. 343	System Total (Min) 105	Critical GPM DC/DP 262 353

Sample from Flowline ____ or Pit _x_		Daily Mud Cost	Cumulative Mud Cost
Flowline Temperature _____	Mud Properties	4,005.61	31,855.14

Time Sample Taken		Mud Properties	
8:35 AM			
Depth (Ft.)			
5,430			
Weight (lb/gal.)			
9.3			
Mud Gradient (psi/ft.)			
0.484			
Funnel Viscosity (Sec/qt. API)			
55			
Plastic Viscosity cp			
15			
Yield Point (lb/100 sq.ft.)			
15			
Gel Strength 10 sec/10 min.			
13/37			
pH			
10.0			
Filtrate API (ml/30 min.)			
8.8		Reserve	
Cake Thickness 32nd			
2		Pit	
Alkalinity, Mud (Pm)			
-			
Alkalinity, Filtrate (Pf/Mf)			
.37/3.1			
Chloride Content, ppm			
5,500		43,000	
Calcium, ppm			
60		Estimated	
Sand Content (% by Vol)			
Tr		Volume:	
Solids Content (% by Vol.)			
6.8		1200 bbs	
Oil Content (% by Vol.)			
0.0			
Water Content (% by Vol.)			
93.2			
LCM, lbs/bbl.			
14			
Reynold's #DP			
1,926			
Reynold's # DC			
2,930			
ECD lb/gal			
9.79			

MUD PROPERTIES SPECIFICATIONS			
Mud Wt.(lbs/gal.)	Viscosity	Filtrate	LCM
9.0-9.2	50-58	8-10.0	12-14 lbs/bbl
Suggest:			
Control mud wt. 9.0-9.2 with water at flowline			
Maintain vis and mud wt. with this premix:			
80 bbls water/80 bbls pit mud			
2 caustic			
1 Soda Ash			
1 lignite			
1/2 Drill Pac			
Gel as needed			
Use 160 bbls water if mud wt. 9.3 or greater			
Suggest 55-58 vis for log			
Add over 2 hours			
Maintain 12-14 lbs/bbl LCM			
Keep hole full on all trips			
Circulate hole clean prior to trips			
After DST put contaminated fluid to reserve pit and add premix as needed			
Please keep all materials covered as needed			
If Operator requests - Mix 2 Desco and 1 caustic in 80 bbls pit mud and 20 bbls water in premix. With production pipe on bottom, add to system over 1 hour. Begin cementing operations.			

DRILLING MUD INVENTORY					
Products:	Prior Day	Delivery	On Hand	Used	Cost
Premium Gel	114	210	265	59	1,292.10
Lime	4		4		
Soda Ash	20		17	3	83.85
Caustic Soda	7	10	9	8	710.16
Lignite	6	10	15	1	30.75
C/S Halls	425		378	47	1,092.75
Drill Pak	4	4	6	2	796.00
Desco	2		2		
Poly					
Soapstix					
Xcide					
Sapp					
Barite					
MilGuard					

Thanks

Mud-Co / Service Mud Representative Rick Hughes	Home Address Wichita, Ks.	Telephone Number 620-791-7623
Cell : 620-791-7623	Warehouse Location Pratt Ks.	Telephone Number 620-672-2957



DRILL STEM TEST REPORT

Prepared For: **Dixon Operating Company LLC.**

1625 N Waterfront PKWY
Wichita, KS 67206

ATTN: Tim Priest

Koppitz #9

2-35S-12W Barber,KS

Start Date: 2022.11.07 @ 05:00:01

End Date: 2022.11.07 @ 14:39:40

Job Ticket #: 69618 DST #: 1

Trilobite Testing, Inc

PO Box 362 Hays, KS 67601

ph: 785-625-4778 fax: 785-625-5620

Printed: 2022.11.16 @ 10:13:54



TRILOBITE
TESTING, INC.

DRILL STEM TEST REPORT

Dixon Operating Company LLC.

2-35S-12W Barber,KS

1625 N Waterfront PKWY
Wichita, KS 67206

Koppitz #9

Job Ticket: 69618

DST#: 1

ATTN: Tim Priest

Test Start: 2022.11.07 @ 05:00:01

GENERAL INFORMATION:

Formation: **Misner Sand**

Deviated: No Whipstock: ft (KB)

Time Tool Opened: 07:52:30

Time Test Ended: 14:39:40

Test Type: Conventional Bottom Hole (Initial)

Tester: Eric Burgess

Unit No: 80

Interval: **5011.00 ft (KB) To 5140.00 ft (KB) (TVD)**

Total Depth: 5140.00 ft (KB) (TVD)

Hole Diameter: 7.88 inches Hole Condition: Fair

Reference Elevations: 1393.00 ft (KB)

1380.00 ft (CF)

KB to GR/CF: 13.00 ft

Serial #: 8369 Outside

Press@RunDepth: 454.04 psig @ 5022.00 ft (KB)

Start Date: 2022.11.07

End Date:

2022.11.07

Start Time: 05:00:01

End Time:

14:39:40

Capacity: 8000.00 psig

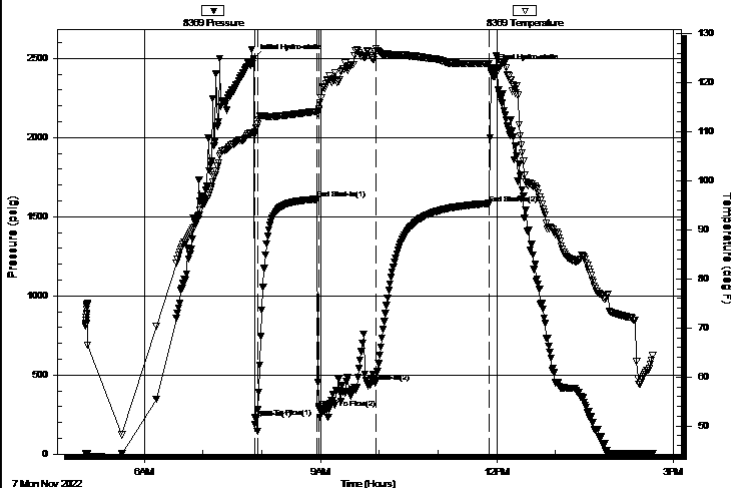
Last Calib.: 2022.11.07

Time On Btm: 2022.11.07 @ 07:51:50

Time Off Btm: 2022.11.07 @ 11:54:10

TEST COMMENT: IF:Strong Building Blow built 70.63" (4)
IS:No Blow Back. (60)
FF:Strong Building Blow built 572.54" (60)
FS:10.48" Blow Back. (120)

Pressure vs. Time



PRESSURE SUMMARY

Time (Min.)	Pressure (psig)	Temp (deg F)	Annotation
0	2497.91	109.86	Initial Hydro-static
1	230.32	109.51	Open To Flow (1)
4	280.79	111.50	Shut-In (1)
65	1610.07	114.17	End Shut-In (1)
67	290.27	114.28	Open To Flow (2)
125	454.04	126.99	Shut-In (2)
241	1583.71	123.86	End Shut-In (2)
243	2435.95	122.51	Final Hydro-static

Recovery

Length (ft)	Description	Volume (bbl)
378.00	OWCG 35%O 35%G 30%W	5.53
315.00	OWCG 30%G 30%O 40%W	4.61
63.00	GVSOCM 15%G 5%O 80%M	0.92

Gas Rates

	Choke (inches)	Pressure (psig)	Gas Rate (Mcf/d)
First Gas Rate	0.13	18.90	12.46
Last Gas Rate	0.13	21.36	13.38
Max. Gas Rate	0.13	21.36	13.38



TRILOBITE
TESTING, INC.

DRILL STEM TEST REPORT

Dixon Operating Company LLC.

2-35S-12W Barber,KS

1625 N Waterfront PKWY
Wichita, KS 67206

Koppitz #9

Job Ticket: 69618

DST#: 1

ATTN: Tim Priest

Test Start: 2022.11.07 @ 05:00:01

GENERAL INFORMATION:

Formation: **Misner Sand**

Deviated: No Whipstock: ft (KB)

Time Tool Opened: 07:52:30

Time Test Ended: 14:39:40

Test Type: Conventional Bottom Hole (Initial)

Tester: Eric Burgess

Unit No: 80

Interval: **5011.00 ft (KB) To 5140.00 ft (KB) (TVD)**

Total Depth: 5140.00 ft (KB) (TVD)

Hole Diameter: 7.88 inches Hole Condition: Fair

Reference Elevations: 1393.00 ft (KB)

1380.00 ft (CF)

KB to GR/CF: 13.00 ft

Serial #: 8846 Inside

Press@RunDepth: psig @ 5022.00 ft (KB)

Start Date: 2022.11.07

End Date:

2022.11.07

Start Time: 05:00:27

End Time:

14:39:56

Capacity: 8000.00 psig

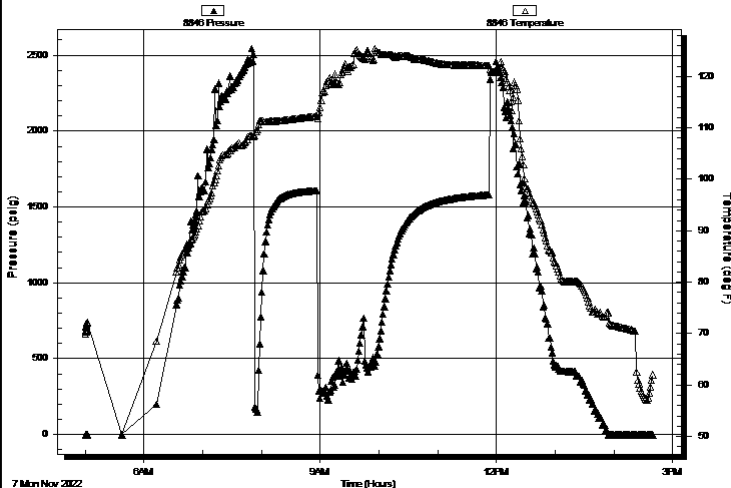
Last Calib.: 2022.11.07

Time On Btm:

Time Off Btm:

TEST COMMENT: IF:Strong Building Blow built 70.63" (4)
IS:No Blow Back. (60)
FF:Strong Building Blow built 572.54" (60)
FS:10.48" Blow Back. (120)

Pressure vs. Time



PRESSURE SUMMARY

Time (Min.)	Pressure (psig)	Temp (deg F)	Annotation
-------------	-----------------	--------------	------------

Recovery

Length (ft)	Description	Volume (bbl)
378.00	OWCG 35%O 35%G 30%W	5.53
315.00	OWCG 30%G 30%O 40%W	4.61
63.00	GVSOCM 15%G 5%O 80%M	0.92

Gas Rates

	Choke (inches)	Pressure (psig)	Gas Rate (Mcf/d)
First Gas Rate	0.13	18.90	12.46
Last Gas Rate	0.13	21.36	13.38
Max. Gas Rate	0.13	21.36	13.38



TRILOBITE
TESTING, INC.

DRILL STEM TEST REPORT

TOOL DIAGRAM

Dixon Operating Company LLC.

2-35S-12W Barber,KS

1625 N Waterfront PKWY
Wichita, KS 67206

Koppitz #9

Job Ticket: 69618

DST#: 1

ATTN: Tim Priest

Test Start: 2022.11.07 @ 05:00:01

Tool Information

Drill Pipe:	Length:	4993.00 ft	Diameter:	3.88 inches	Volume:	73.02 bbl	Tool Weight:	2000.00 lb
Heavy Wt. Pipe:	Length:	0.00 ft	Diameter:	0.00 inches	Volume:	0.00 bbl	Weight set on Packer:	24000.00 lb
Drill Collar:	Length:	0.00 ft	Diameter:	2.25 inches	Volume:	0.00 bbl	Weight to Pull Loose:	24000.00 lb
					Total Volume:	73.02 bbl	Tool Chased	0.00 ft
Drill Pipe Above KB:		13.00 ft					String Weight: Initial	63000.00 lb
Depth to Top Packer:		5011.00 ft					Final	66000.00 lb
Depth to Bottom Packer:		ft						
Interval between Packers:		129.00 ft						
Tool Length:		160.00 ft						
Number of Packers:		2	Diameter:	6.75 inches				
Tool Comments:								

Tool Description

Length (ft) Serial No. Position Depth (ft) Accum. Lengths

Change Over Sub	1.00			4981.00		
Shut In Tool	5.00			4986.00		
Hydraulic tool	5.00			4991.00		
Em Tool	3.00			4994.00		
Jars	5.00			4999.00		
Safety Joint	3.00			5002.00		
Packer	4.00			5006.00	31.00	Bottom Of Top Packer
Packer	5.00			5011.00		
Stubb	1.00			5012.00		
Perforations	9.00			5021.00		
Change Over Sub	1.00			5022.00		
Recorder	0.00	8369	Outside	5022.00		
Recorder	0.00	8846	Inside	5022.00		
Blank Spacing	94.00			5116.00		
Change Over Sub	1.00			5117.00		
Perforations	20.00			5137.00		
Bullnose	3.00			5140.00	129.00	Bottom Packers & Anchor
Total Tool Length:	160.00					



TRILOBITE
TESTING, INC.

DRILL STEM TEST REPORT

FLUID SUMMARY

Dixon Operating Company LLC.

2-35S-12W Barber,KS

1625 N Waterfront PKWY
Wichita, KS 67206

Koppitz #9

Job Ticket: 69618

DST#: 1

ATTN: Tim Priest

Test Start: 2022.11.07 @ 05:00:01

Mud and Cushion Information

Mud Type: Gel Chem

Mud Weight: 10.00 lb/gal

Viscosity: 52.00 sec/qt

Water Loss: 10.38 in³

Resistivity: ohm.m

Salinity: 7000.00 ppm

Filter Cake: 0.20 inches

Cushion Type:

Cushion Length:

Cushion Volume:

Gas Cushion Type:

Gas Cushion Pressure:

ft

bbl

psig

Oil API:

Water Salinity: 56000 ppm

deg API

Recovery Information

Recovery Table

Length ft	Description	Volume bbl
378.00	OWCG 35%O 35%G 30%W	5.528
315.00	OWCG 30%G 30%O 40%W	4.607
63.00	GVSOCM 15%G 5%O 80%M	0.921

Total Length: 756.00 ft

Total Volume: 11.056 bbl

Num Fluid Samples: 0

Num Gas Bombs: 0

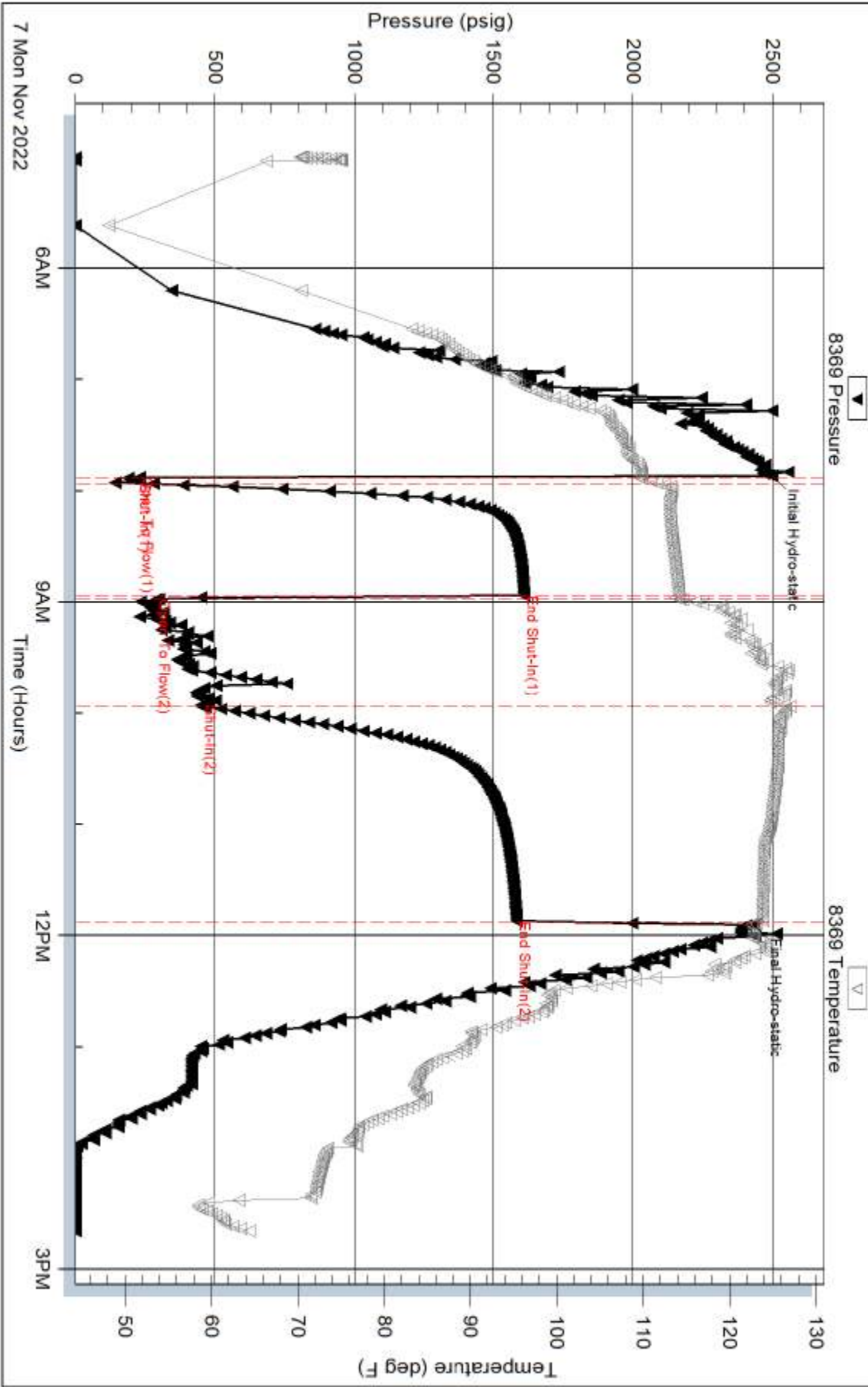
Serial #:

Laboratory Name:

Laboratory Location:

Recovery Comments:

Pressure vs. Time



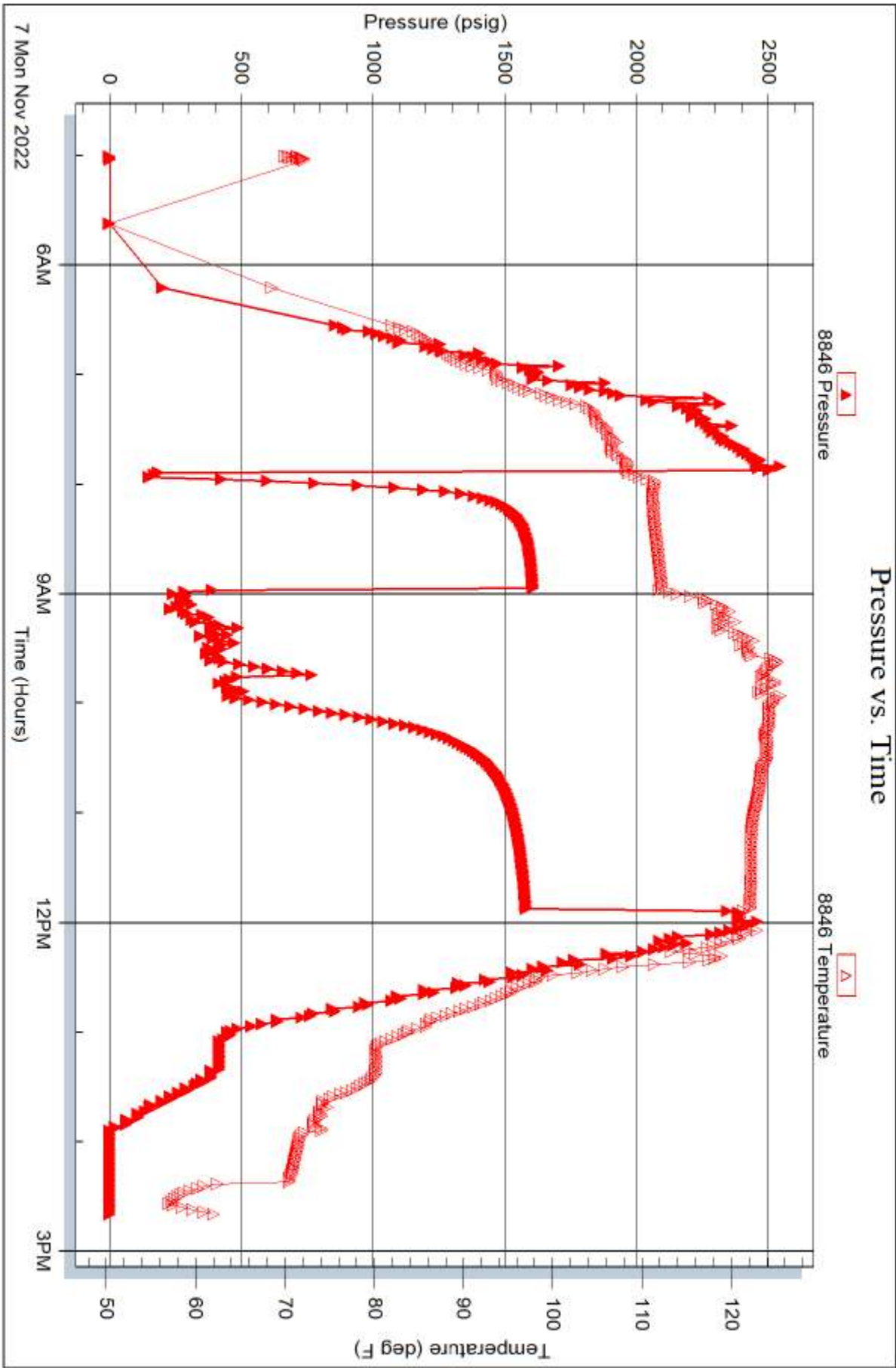
Serial #: 8846

Inside

Dixon Operating Company LLC.

Kopitz #9

DST Test Number: 1





TRILOBITE TESTING INC.

1515 Commerce Parkway • Hays, Kansas 67601

Test Ticket

NO. **69618**

Well Name & No. KOPPER H 7 Test No. 1 Date 11/17/22
Company Oilco Operating Company LLC Elevation 1393 KB 1380 GL
Address 1625 N. White Front Pkwy STE 220 Wichita, KS 67206
Co. Rep / Geo. Tim Priest Rig Duke 7
Location: Sec. 2 Twp 35S Rge. 12W Co. Barber State KS

Interval Tested 5011' - 5140' Zone Tested MISNER SAND
Anchor Length 129' Drill Pipe Run 4993' Mud Wt. 9.5
Top Packer Depth 5003' Drill Collars Run 0 Vis 52
Bottom Packer Depth 5007' Wt. Pipe Run 0 WL 10.4
Total Depth 5140' Chlorides 2000 ppm System LCM 6

Blow Description IF: Strong Building Blow built 70.63" (141)
FST: 10.18" Blow Back. (60)
FF: Strong Building Blow built 570.54" (160)
FST: 10.18" Blow Back. (120)

Rec	Feet of	%gas	%oil	%water	%mud
<u>63</u>	<u>Feet of GVSOCM</u>	<u>15</u>	<u>5</u>	<u>80</u>	
<u>315</u>	<u>Feet of OWCG</u>	<u>30</u>	<u>30</u>	<u>40</u>	
<u>378</u>	<u>Feet of OWCG</u>	<u>35</u>	<u>35</u>	<u>30</u>	
Rec	Feet of	%gas	%oil	%water	%mud
Rec	Feet of	%gas	%oil	%water	%mud

Rec Total 756 BHT 122 Gravity _____ API RW 15 @ 61 °F Chlorides 261 (900) ppm

(A) Initial Hydrostatic <u>2498</u>	<input checked="" type="checkbox"/> Test <u>2150</u>	T-On Location <u>0320</u>
(B) First Initial Flow <u>230</u>	<input checked="" type="checkbox"/> Jars <u>300</u>	T-Started <u>0500</u>
(C) First Final Flow <u>281</u>	<input checked="" type="checkbox"/> Safety Joint	T-Open <u>0748</u>
(D) Initial Shut-In <u>1610</u>	<input type="checkbox"/> Circ Sub	T-Pulled <u>1153</u>
(E) Second Initial Flow <u>290</u>	<input type="checkbox"/> Hourly Standby	T-Out <u>1439</u>
(F) Second Final Flow <u>454</u>	<input checked="" type="checkbox"/> Mileage <u>114</u> 199.50	Comments
(G) Final Shut-In <u>1584</u>	<input type="checkbox"/> Sampler	
(H) Final Hydrostatic <u>2436</u>	<input type="checkbox"/> Straddle	
	<input checked="" type="checkbox"/> Shale Packer <u>250</u>	<input checked="" type="checkbox"/> EM Tool <u>-175</u>
	<input type="checkbox"/> Extra Packer	<input type="checkbox"/> Ruined Shale Packer
	<input type="checkbox"/> Extra Recorder	<input type="checkbox"/> Ruined Packer
	<input type="checkbox"/> Day Standby	<input type="checkbox"/> Extra Copies
	<input type="checkbox"/> Accessibility	Sub Total <u>-175</u>
	Sub Total <u>2899.50</u>	Total <u>2724.50</u>

Initial Open 4
Initial Shut-In 60
Final Flow 60
Final Shut-In 120

Approved By _____ Our Representative _____
Trilobite Testing Inc. shall not be liable for damaged of any kind of the property or personnel of the one for whom a test is made, or for any loss suffered or sustained, directly or indirectly, through the use of its equipment, or its statements or opinion concerning the results of any test, tools lost or damaged in the hole shall be paid for at cost by the party for whom the test is made.



P.O. Box 1733 • Hays, Kansas 67601

Gas Volume Report

Well Name and No.

DST No.

[illegible]

Remarks: