

KANSAS CORPORATION COMMISSION
OIL & GAS CONSERVATION DIVISION

Form must be Typed

Form must be signed

All blanks must be complete

TEMPORARY ABANDONMENT WELL APPLICATION

OPERATOR: License# _____

Name: _____

Address 1: _____

Address 2: _____

City: _____ State: _____ Zip: _____ + _____

Contact Person: _____

Phone: (_____) _____

Contact Person Email: _____

Field Contact Person: _____

Field Contact Person Phone: (_____) _____

API No. 15- _____

Spot Description: _____

____ - ____ - ____ - ____ Sec. _____ Twp. _____ S. R. _____ ☐ E ☐ W_____ feet from ☐ N / ☐ S Line of Section_____ feet from ☐ E / ☐ W Line of Section

GPS Location: Lat: _____, Long: _____

(e.g. xx.xxxxx) (e.g. -xxx.xxxxx)

Datum: ☐ NAD27 ☐ NAD83 ☐ WGS84County: _____ Elevation: _____ ☐ GL ☐ KB

Lease Name: _____ Well #: _____

Well Type: (check one) ☐ Oil ☐ Gas ☐ OG ☐ WSW ☐ Other: _____☐ SWD Permit #: _____ ☐ ENHR Permit #: _____☐ Gas Storage Permit #: _____

Spud Date: _____ Date Shut-In: _____

	Conductor	Surface	Production	Intermediate	Liner	Tubing
Size						
Setting Depth						
Amount of Cement						
Top of Cement						
Bottom of Cement						

Casing Fluid Level from Surface: _____ How Determined? _____ Date: _____

Casing Squeeze(s): _____ to _____ w / _____ sacks of cement, _____ to _____ w / _____ sacks of cement. Date: _____
(top) (bottom) (top) (bottom)Do you have a valid Oil & Gas Lease? ☐ Yes ☐ NoDepth and Type: ☐ Junk in Hole at _____ ☐ Tools in Hole at _____ Casing Leaks: ☐ Yes ☐ No Depth of casing leak(s): _____
(depth) (depth)Type Completion: ☐ ALT. I ☐ ALT. II Depth of: ☐ DV Tool: _____ w / _____ sacks of cement ☐ Port Collar: _____ w / _____ sack of cement
(depth) (depth)

Packer Type: _____ Size: _____ Inch Set at: _____ Feet

Total Depth: _____ Plug Back Depth: _____ Plug Back Method: _____

Geological Data:**Formation Name**

Formation Top Formation Base

Completion Information

1. _____ At: _____ to _____ Feet Perforation Interval _____ to _____ Feet or Open Hole Interval _____ to _____ Feet

2. _____ At: _____ to _____ Feet Perforation Interval _____ to _____ Feet or Open Hole Interval _____ to _____ Feet

UNDER PENALTY OF PERJURY I HEREBY ATTEST THAT THE INFORMATION CONTAINED HEREIN IS TRUE AND CORRECT TO THE BEST OF MY KNOWLEDGE

Submitted Electronically

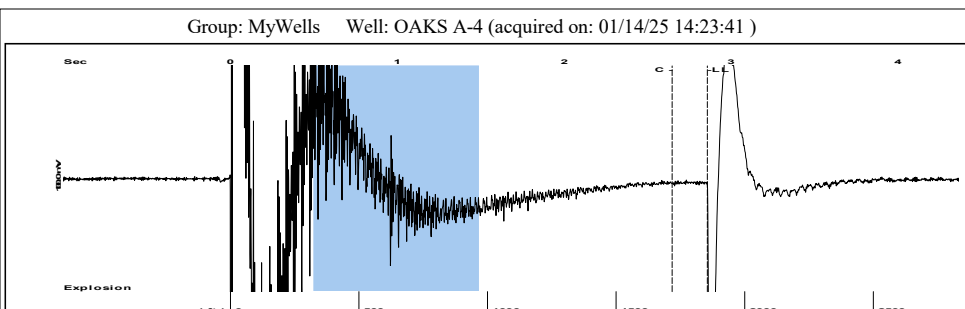
**Do NOT Write in This
Space - KCC USE ONLY**

Date Tested: _____ Results: _____ Date Plugged: _____ Date Repaired: _____ Date Put Back in Service: _____

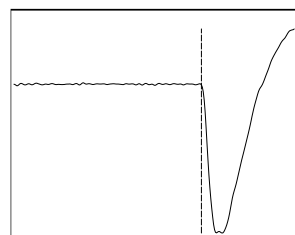
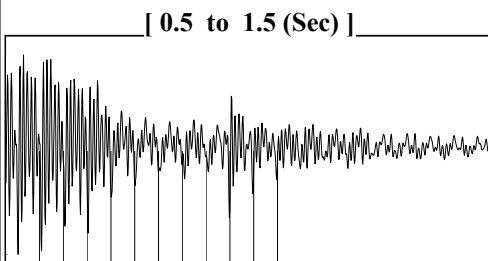
Review Completed by: _____ Comments: _____

TA Approved: ☐ Yes ☐ Denied Date: _____**Mail to the Appropriate KCC Conservation Office:**

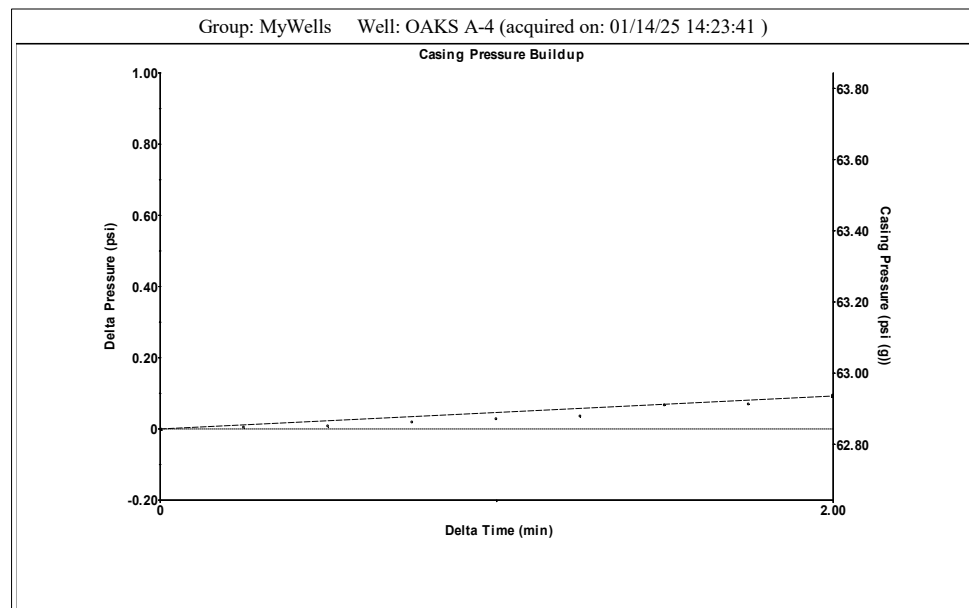
	KCC District Office #1 - 210 E. Frontview, Suite A, Dodge City, KS 67801	Phone 620.682.7933
	KCC District Office #2 - 3450 N. Rock Road, Building 600, Suite 601, Wichita, KS 67226	Phone 316.337.7400
	KCC District Office #3 - 137 E. 21st St., Chanute, KS 66720	Phone 620.902.6450
	KCC District Office #4 - 2301 E. 13th Street, Hays, KS 67601-2651	Phone 785.261.6250



Filter Type High Pass Automatic Collar Count Yes Time 2.859 sec
 Manual Acoustic Veloc1288.34 ft/s Manual JTS/sec 20.4499 Joints 58.8618 Jts
 Depth 1854.15 ft



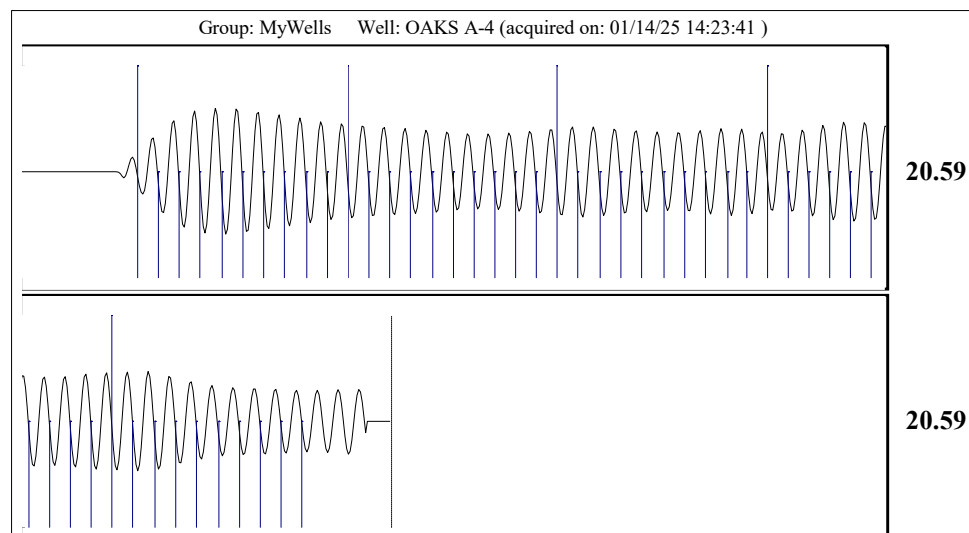
Analysis Method: Automatic



Change in Pressure 0.09 psi PT18820
 Change in Time 2.00 min Range 0 - ? psi

Group: MyWells Well: OAKS A-4 (acquired on: 01/14/25 14:23:41)

Production	Potential	Casing Pressure		Producing
Current				Annular Gas Flow
Oil 1	3.6 BBL/D	62.8 psi (g)		1 Mscf/D
Water 1	3.6 BBL/D	Casing Pressure Buildup		% Liquid
Gas 254.0	926.7 Mscf/D	0.092 psi		98 %
		2.00 min		
IPR Method	Vogel	Gas/Liquid Interface Pressure		
PBHP/SBHP	0.84	66.3 psi (g)		
Production Efficiency	27.4			
		Liquid Level Depth		
Oil 40 deg.API		1854.15 ft		
Water 1.05 Sp.Gr.H2O		Pump Intake Depth		
Gas 0.68 Sp.Gr.AIR		4222.00 ft		
Acoustic Velocity	1297.06 ft/s	Formation Depth		
		4194.00 ft		
Formation Submergence			Pump Intake	
Total Gaseous Liquid Column HT (TVD)		2368 ft	831.8 psi (g)	
Equivalent Gas Free Liquid HT (TVD)		2316 ft	Producing BHP	
			822.9 psi (g)	
Acoustic Test			Static BHP	
			987.5 psi (g)	



Acoustic Velocity	1297.06 ft/s	Joints counted	49
Joints Per Second	20.5882 jts/sec	Joints to liquid level	58.8618
Depth to liquid level	1854.15 ft	Filter Width	18.4499 22.4499
Automatic Collar Count	Yes	Time to 1st Collar	0.268 2.648

Conservation Division
District Office No. 1
210 E. Frontview, Suite A
Dodge City, KS 67801



Phone: 620-682-7933
<http://kcc.ks.gov/>

Andrew J. French, Chairperson
Dwight D. Keen, Commissioner
Annie Kuether, Commissioner

Laura Kelly, Governor

01/22/2025

AMANDA LAIR
BCE-Mach III LLC
14201 WIRELESS WAY SUITE 300
OKLAHOMA CITY, OK 73134-2521

Re: Temporary Abandonment
API 15-007-22803-00-01
OAKES A 4
S/2 Sec.05-35S-13W
Barber County, Kansas

Dear AMANDA LAIR:

"Your temporary abandonment (TA) application for the well listed above has been approved. In accordance with K.A.R. 82-3-111 the TA status of this well will expire 01/22/2026.

- * If you return this well to service or plug it, please notify the District Office.
- * If you sell this well you are required to file a Transfer of Operator form, T-1.
- * If the well will remain temporarily abandoned, you must submit a new TA application, CP-111, before 01/22/2026.

You may contact me at the number above if you have questions.

Very truly yours,

Michael Maier"