

KANSAS CORPORATION COMMISSION
OIL & GAS CONSERVATION DIVISION

Form must be Typed

Form must be signed

All blanks must be complete

TEMPORARY ABANDONMENT WELL APPLICATION

OPERATOR: License# _____

Name: _____

Address 1: _____

Address 2: _____

City: _____ State: _____ Zip: _____ + _____

Contact Person: _____

Phone: (_____) _____

Contact Person Email: _____

Field Contact Person: _____

Field Contact Person Phone: (_____) _____

API No. 15- _____

Spot Description: _____

____ - ____ - ____ - ____ Sec. _____ Twp. _____ S. R. _____ ☐ E ☐ W_____ feet from ☐ N / ☐ S Line of Section_____ feet from ☐ E / ☐ W Line of Section

GPS Location: Lat: _____, Long: _____

(e.g. xx.xxxxx) (e.g. -xxx.xxxxx)

Datum: ☐ NAD27 ☐ NAD83 ☐ WGS84County: _____ Elevation: _____ ☐ GL ☐ KB

Lease Name: _____ Well #: _____

Well Type: (check one) ☐ Oil ☐ Gas ☐ OG ☐ WSW ☐ Other: _____☐ SWD Permit #: _____ ☐ ENHR Permit #: _____☐ Gas Storage Permit #: _____

Spud Date: _____ Date Shut-In: _____

	Conductor	Surface	Production	Intermediate	Liner	Tubing
Size						
Setting Depth						
Amount of Cement						
Top of Cement						
Bottom of Cement						

Casing Fluid Level from Surface: _____ How Determined? _____ Date: _____

Casing Squeeze(s): _____ to _____ w / _____ sacks of cement, _____ to _____ w / _____ sacks of cement. Date: _____
(top) (bottom) (top) (bottom)Do you have a valid Oil & Gas Lease? ☐ Yes ☐ NoDepth and Type: ☐ Junk in Hole at _____ ☐ Tools in Hole at _____ Casing Leaks: ☐ Yes ☐ No Depth of casing leak(s): _____
(depth) (depth)Type Completion: ☐ ALT. I ☐ ALT. II Depth of: ☐ DV Tool: _____ w / _____ sacks of cement ☐ Port Collar: _____ w / _____ sack of cement
(depth) (depth)

Packer Type: _____ Size: _____ Inch Set at: _____ Feet

Total Depth: _____ Plug Back Depth: _____ Plug Back Method: _____

Geological Data:**Formation Name**

Formation Top Formation Base

Completion Information

1. _____ At: _____ to _____ Feet Perforation Interval _____ to _____ Feet or Open Hole Interval _____ to _____ Feet

2. _____ At: _____ to _____ Feet Perforation Interval _____ to _____ Feet or Open Hole Interval _____ to _____ Feet

UNDER PENALTY OF PERJURY I HEREBY ATTEST THAT THE INFORMATION CONTAINED HEREIN IS TRUE AND CORRECT TO THE BEST OF MY KNOWLEDGE

Submitted Electronically

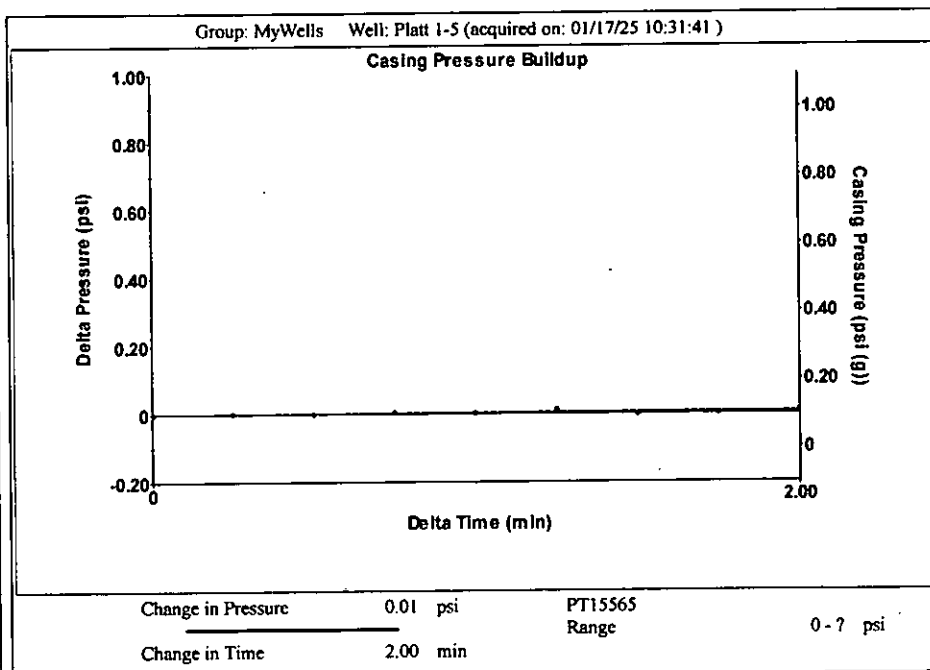
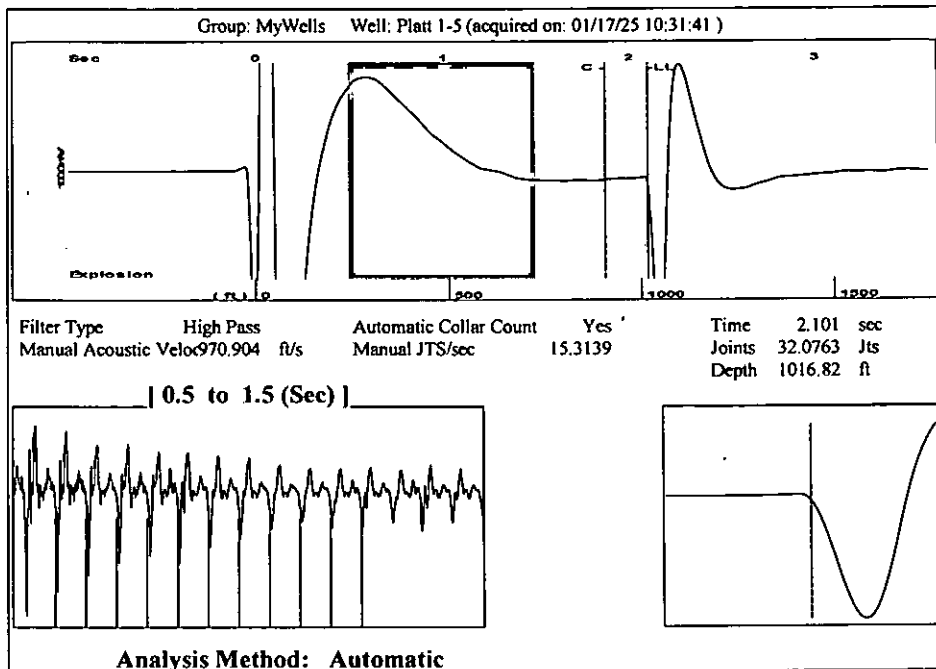
**Do NOT Write in This
Space - KCC USE ONLY**

Date Tested: _____ Results: _____ Date Plugged: _____ Date Repaired: _____ Date Put Back in Service: _____

Review Completed by: _____ Comments: _____

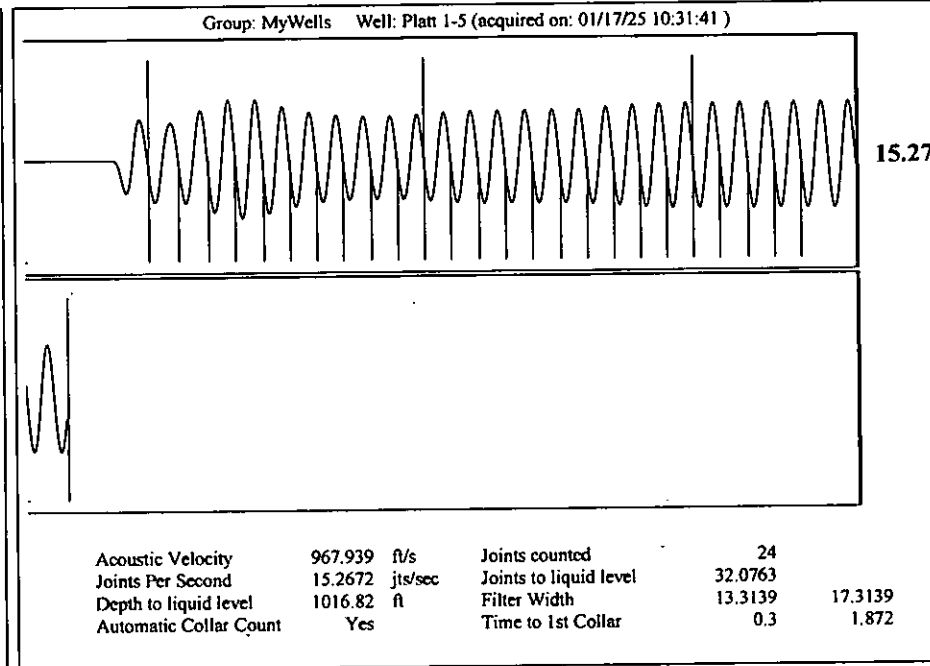
TA Approved: ☐ Yes ☐ Denied Date: _____**Mail to the Appropriate KCC Conservation Office:**

	KCC District Office #1 - 210 E. Frontview, Suite A, Dodge City, KS 67801	Phone 620.682.7933
	KCC District Office #2 - 3450 N. Rock Road, Building 600, Suite 601, Wichita, KS 67226	Phone 316.337.7400
	KCC District Office #3 - 137 E. 21st St., Chanute, KS 66720	Phone 620.902.6450
	KCC District Office #4 - 2301 E. 13th Street, Hays, KS 67601-2651	Phone 785.261.6250



Group: MyWells Well: Platt 1-5 (acquired on: 01/17/25 10:31:41)

Production		Potential	Casing Pressure	Producing
Oil	-*-	-*- BBL/D	0.1 psi (g)	Annular Gas Flow 0 Mscf/D
Water	-*-	-*- BBL/D	Casing Pressure Buildup 0.008 psi	% Liquid 100 %
Gas	-*-	-*- Mscf/D	2.00 min	
IPR Method	Vogel	Gas/Liquid Interface Pressure 0.6 psi (g)		
PBHP/SBHP	-*-			
Production Efficiency	0.0			
Oil 40 deg API		Liquid Level Depth 1016.82 ft		
Water 1.05 Sp.Gr.H2O		Pump Intake Depth -*- ft		
Gas 0.99 Sp.Gr.AIR		Formation Depth 4815.00 ft		
Acoustic Velocity 967.939 ft/s				
Formation Submergence				Pump Intake -*- psi (g)
Total Gaseous Liquid Column HT (TVD) 3798 ft				Producing BHP 1727.5 psi (g)
Equivalent Gas Free Liquid HT (TVD) 3798 ft				Static BHP -*- psi (g)
Platt 1-5				



Conservation Division
District Office No. 1
210 E. Frontview, Suite A
Dodge City, KS 67801



Phone: 620-682-7933
<http://kcc.ks.gov/>

Andrew J. French, Chairperson
Dwight D. Keen, Commissioner
Annie Kuether, Commissioner

Laura Kelly, Governor

01/23/2025

Anthony Farrar
Indian Oil Co., Inc.
308 S. Main St.
PO BOX 209
MEDICINE LODGE, KS 67104-0209

Re: Temporary Abandonment
API 15-007-22752-00-00
PLATT 'A' 1-5
NW/4 Sec.05-34S-15W
Barber County, Kansas

Dear Anthony Farrar:

"Your temporary abandonment (TA) application for the well listed above has been approved. In accordance with K.A.R. 82-3-111 the TA status of this well will expire 01/23/2026.

- * If you return this well to service or plug it, please notify the District Office.
- * If you sell this well you are required to file a Transfer of Operator form, T-1.
- * If the well will remain temporarily abandoned, you must submit a new TA application, CP-111, before 01/23/2026.

You may contact me at the number above if you have questions.

Very truly yours,

Michael Maier"