

Form	ACO1 - Well Completion
Operator	Griffin, Charles N.
Well Name	TAYCEN #2
Doc ID	1695618

Tops

Name	Top	Datum
Heebner	3812	-1917
Brown Lime	3992	-2097
Lansing	4016	-2121
Stark	4317	-2422
B/KC	4403	-2508
Pawnee	4466	-2571
Cherokee	4514	-2619
Viola	4564	-2669
Simpson Shale	4681	-2786

Form	ACO1 - Well Completion
Operator	Griffin, Charles N.
Well Name	TAYCEN #2
Doc ID	1695618

Casing

Purpose Of String	Size Hole Drilled	Size Casing Set	Weight	Setting Depth	Type Of Cement	Number of Sacks Used	Type and Percent Additives
Surface	12.25	8.625	23	260	Common	325	2% Gel 3% CC
Production	7.875	5.5	15.5	4738	Pro C	135	10% Salt, 6# Koseal

QUALITY WELL SERVICE, INC.

8177

Federal Tax I.D. # 481187368

Home Office 30060 N. Hwy 281, Pratt, KS 67124

Mailing Address P.O. Box 468

Office 620-786-6992

Fax 620-672-3663

Todd's Cell 620-388-4967

Brady's Cell 620-727-6964

Date	12-7-22	Sec.	15	Twp.	30S	Range	15W	County	Barber	State	Ks	On Location		Finish	
Lease	TAYLOR		Well No.		2		Location								
Contractor	Murfin D&G RIG #104							Owner							
Type Job	SURFACE							To Quality Well Service, Inc. You are hereby requested to rent cementing equipment and furnish cementer and helper to assist owner or contractor to do work as listed.							
Hole Size	12 1/4		T.D.		260'		Charge To								
Csg.	8 5/8 23'		Depth		259'		Griffin								
Tbg. Size			Depth				Street								
Tool			Depth				City State								
Cement Left in Csg.			Shoe Joint		20		The above was done to satisfaction and supervision of owner agent or contractor.								
Meas Line			Displace		15.3		Cement Amount Ordered 200 sc 2 1/2 GAL 3 1/2 (1 1/2' P)								
EQUIPMENT							1/2' OWD 5 1/2" x KOLSEAL 290 sc 2 1/2 GAL 3 1/2 (1 1/2' P)								
Pumptrk	8	No.					Common 325 sc								
Bulktrk	12	No.					Poz. Mix								
Bulktrk	15	No.					Gel. 611 K								
Pickup		No.					Calcium 917								
JOB SERVICES & REMARKS							Hulls								
Rat Hole							Salt								
Mouse Hole							Flowseal 163'								
Centralizers							Kol-Seal 1000"								
Baskets							Mud CLR 48 OWD 100'								
D/V or Port Collar							CFL-117 or CD110 CAF 38								
Run 6 5/8 23" CSG SET D 259'							Sand								
START CSG CSG on Bottom							Handling 375								
Hook up to CSG & BREAK CIRCULAR							Mileage 251 9375								
START Pumping H2O							FLOAT EQUIPMENT								
START mix Pump 200 sc LEAD 14 1/2' GAL							Guide Shoe								
START mix Pump 75 sc TAIL 14 1/2' GAL							Centralizer								
START Disp							Baskets								
PUSH DOWN 15.3 BH total							AFU Inserts								
Close VALVE on CSG							Float Shoe								
Good circ thru JOB CMT in Cellar							Latch Down								
FIELD LET SET 45 min															
TOP OFF 50 sc Common 2 1/2 GAL 3 1/2 (1 1/2' P)							SERVICE Exp								
THANK YOU							Pumptrk Charge SURFACE								
PLEASE CALL AGAIN							Mileage 75								
TODD: MIKE X2															
Signature							Tax								
							Discount								
							Total Charge								

QUALITY WELL SERVICE, INC.

8185

Federal Tax I.D. # 481187368

Home Office 30060 N. Hwy 281, Pratt, KS 67124

Mailing Address P.O. Box 468

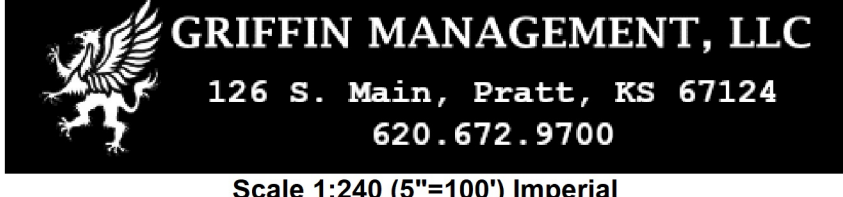
Office 620-786-6992

Fax 620-672-3663

Todd's Cell 620-388-4967

Brady's Cell 620-727-6964

Date	12-12-22	Sec.	15	Twp.	30S	Range	15W	County	Barber	State	Ks	On Location	Finish
Lease	TAYLOR		Well No.		2		Location						
Contractor	Muelin Drilling							Owner					
Type Job	Longstring							To Quality Well Service, Inc. You are hereby requested to rent cementing equipment and furnish cementer and helper to assist owner or contractor to do work as listed.					
Hole Size	7 7/8		T.D.		4740'		Charge To						
Csg.	5 1/2		Depth		4738'		Griffin						
Tbg. Size			Depth				Street						
Tool			Depth				City State						
Cement Left in Csg.			Shoe Joint		7.44		The above was done to satisfaction and supervision of owner agent or contractor.						
Meas Line			Displace		112.59		Cement Amount Ordered 175x Pol 2/FEL 10% Salt						
EQUIPMENT													
Pumptrk	3	No.					Common 175x						
Bulktrk	10	No.					Poz. Mix						
Bulktrk		No.					Gel. 329"						
Pickup		No.					Calcium						
JOB SERVICES & REMARKS													
Rat Hole	30x							Hulls					
Mouse Hole								Salt 964"					
Centralizers	7 EA 12-3-4-5-6-7							Flowseal 44"					
Baskets								Kol-Seal 875"					
D/V or Port Collar								Mud CLR 48 500GAL					
Run	H's 5 1/2 15.5" CSG SET							GFL-117 or GD110 CAF-38 C16A 99"					
START CSG	CSG ON Bottom TAG							Sand CC-1 9 GAL C4IP 41"					
Hook up to CSG	DROP BALL BREAK CIR W/IG							Handling 217					
START Pumping	10 Bbls H3 12 Bbls MF 10 Bbls H2							Mileage 251 5425					
Plub Dr-H	30x							5 1/2 FLOAT EQUIPMENT					
START MIX Pump	145x Pol C 4 CSG 148"							Guide Shoe H 1 m 1 EA					
SHUT DOWN	wash up tck RELEASE 5 1/2 LO PLUG							Centralizer 7 EA					
START Disp	w/ 12 1/2" KLL							Baskets					
LIFT PS.	97 out 550'							AFU Inserts					
Plub Down	1100' 113.5 Bbls out							Float Shoe 1 EA					
Plub up	CSG 1700'							Latch Down 1 EA					
RELEASE!	HELD 3/4 BH BACK							SERVICE Supv 1 EA					
Good circ thru JO3								LMV 25					
THANK YOU								Pumptrk Charge LS					
PLEASE CALL AGAIN								Mileage 50					
TODAY Mike Bryan													
X Signature								Tax					
								Discount					
								Total Charge					



126 S. Main, Pratt, KS 67124

620.672.9700

Scale 1:240 (5"=100') Imperial

Measured Depth Log

Well Name: Taycen #2

API: 15-007-24455

Location: T30S R15W Sec 15

License Number: 33936

Spud Date: 12/6/2022

Surface Coordinates: 1650' FSL & 330' FWL

Region: Barber County, KS

Drilling Completed: 12/12/2022

Bottom Hole Vertical Wellbore

Coordinates:

Ground Elevation (ft): 1890'

K.B. Elevation (ft): 1895'

Logged Interval (ft): 3800'

To: 4740' Total Depth (ft): 4740'

Formation: Ordovician (Simpson) @ RTD

Type of Drilling Fluid: Mud-Co. Chemical Drispac - Displaced @ 2801-23' w/ 700 bbls

Printed by MudLog from WellSight Systems 1-800-447-1534 www.WellSight.com

OPERATOR

Company: Griffin Management, LLC

Address: 126 S. Main

Pratt, KS 67124

GEOLOGIST

Name: Eli J. Felts

Company: Griffin Management, LLC

Address: 126 S. Main

Pratt, KS 67124

Drilling Report

Murfin #104

Tool Pusher - James Mayfield

12/6/2022

Spud

12/7/2022

Cement @ 260'

12/8/2022

Drilling @ 1370'

12/9/2022

Drilling @ 2745'

12/10/2022

Drilling @ 3900'

12/11/2022

RTD @ 5:15 AM

Short Trip @ 4740'

Logs 4:30 to 8PM

12/12/2022

Run Casing; Plug Down 11 AM

Release Rig @ 3 PM

Problems

Lost 500 BBL at 75' in 2 hours

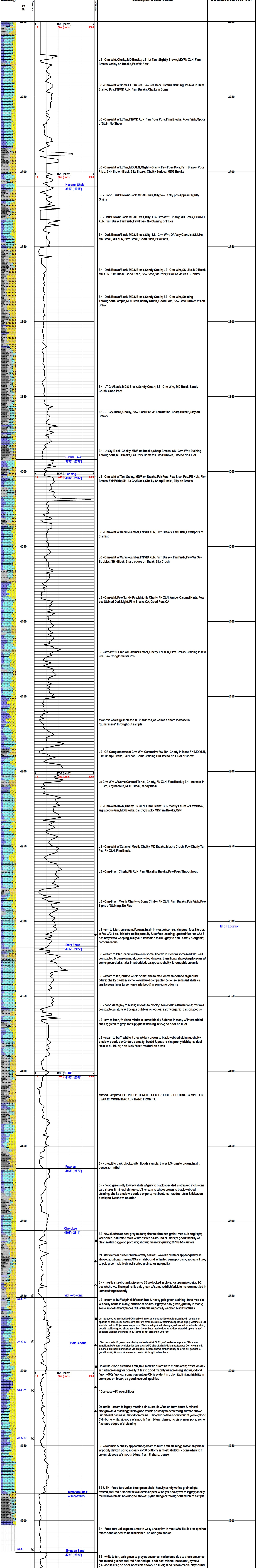
Lost circ 989'- 80 bbl , still losing volume

Short trip at 4,840 pulled up to surface shoe

Pipe Setting

8.625" Surface Casing Set @ 260' w/ 325 sxs. Common

5.5" 15.5# Production Set @ 4738' w/ 135 sxs. Pro C



Griffin Management, LLC
Taycen #2

12/12/22

Murfin Rig 104

Ran 112 joints of new 5 ½" 15.5 # casing totaling 4,739.69'. **PBTD: 4,732.25'**. RU to break circulation for one hour.

RU Quality well service and cemented with 145 sks Pro C cement with 10% salt, 2% gel and 6# Koseal.

Plug down and held at 11:15 am.

Plug rathole with 30 sks cement.

Release rig.

12/16/22

RU CCOS Rig #3

Casing swab well down to 1500' from surface

RU Log-Tech and perforated **4540'-4550'** 3 SPF

TIH W/ 5.5 Model R packer 144 jts 2-7/8" tubing set at **4510'** RU swab.

1-FL 900' pull from 2100' rec 1200' 300' free oil

2-FL 1350' pull from 2400' rec 1050' 30% oil

3-FL 1600' pull from 2800' rec 1200' water

4-FL 500' pull from 1500' rec 1000' 35% oil rec 27bbls

Well kicked off start flow testing

12/17/2022

Well still flowing to frac tank RD move off

02/16/2023

MIRU CCOS Rig #3

SD

02/17/2023

Shut in Well RU N5 slickline to run Paraffin knife and gauge ring cleaned up tubing to SN SIP 520psi RD N5 slickline Hot oiled lead line from well to tank battery hooked well up to tank blew down to tank till well kicked off making oil turn down lead line flowing to stock SD

02/21/2023

Blow well down to tank. Release packer let equalize Run 4 joints in hole land tubing. RU Swab

1-Fl 2800' pulled from 3200' Rec 400' gassy oil

2-Fl 3000' pulled from 4000' Rec 1000' 300' oil 700' water

3-Fl 3200' pulled from 4200' Rec 1000' trashy water

4-Fl 3400' pulled from 4600' Rec 1200' Trashy water

Light Blow on casing

5-FL 3600' pulled from SN Rec 1000' Trash water Rec
22.5 bbls for hour

6-FL 3600' pulled from Sn Rec 1000' TW Strong blow on
casing.

7-FL 3800' pulled from SN Rec 800' TW

8-FL 4100' pulled from Sn Rec 500' Show of oil shut
casing in

9-FL 4300' Pulled from SN Rec 300' Show of oil 110 psi on
Casing REC 13.5 bbls for hour

10-FL 3800' pulled from Sn Rec 800' TOB oil 200 psi on
CSG

11-FL 3500' pulled from 4500' Rec 1000' 22% OIL 220 PSI
on CSG

12-FL 3800' pulled from SN Rec 800' 44%' Oil 240 psi on
CSG REC. 11.25bbl total REC 47.25bbls

RO to Run pump and rods

Total tubing in hole

148x2-7/8" at 4625' JT AVG 31.25

SN

5.5 Short Body model left hand set 4732'

Pump And Rods

2-½"x2"x18' HRFOCSV Back off tool NO tap tool

2'x3/4" pony on pump

9x1-½" Sinker bars

100x3/4" Rods

74x7/8" Rods

2'-8'-8'x7/8" pony rods

26'x1-1/4" PR 14'x1-1/2" HF liner

Load hole long stroke to 500 psi held hang on make up wellhead start pumping down lead line.