

KANSAS CORPORATION COMMISSION
OIL & GAS CONSERVATION DIVISION

Form must be Typed

Form must be signed

All blanks must be complete

TEMPORARY ABANDONMENT WELL APPLICATION

OPERATOR: License# _____

Name: _____

Address 1: _____

Address 2: _____

City: _____ State: _____ Zip: _____ + _____

Contact Person: _____

Phone: (_____) _____

Contact Person Email: _____

Field Contact Person: _____

Field Contact Person Phone: (_____) _____

API No. 15- _____

Spot Description: _____

____ - ____ - ____ - ____ Sec. _____ Twp. _____ S. R. _____ ☐ E ☐ W_____ feet from ☐ N / ☐ S Line of Section_____ feet from ☐ E / ☐ W Line of Section

GPS Location: Lat: _____, Long: _____

(e.g. xx.xxxxx) (e.g. -xxx.xxxxx)

Datum: ☐ NAD27 ☐ NAD83 ☐ WGS84County: _____ Elevation: _____ ☐ GL ☐ KB

Lease Name: _____ Well #: _____

Well Type: (check one) ☐ Oil ☐ Gas ☐ OG ☐ WSW ☐ Other: _____☐ SWD Permit #: _____ ☐ ENHR Permit #: _____☐ Gas Storage Permit #: _____

Spud Date: _____ Date Shut-In: _____

	Conductor	Surface	Production	Intermediate	Liner	Tubing
Size						
Setting Depth						
Amount of Cement						
Top of Cement						
Bottom of Cement						

Casing Fluid Level from Surface: _____ How Determined? _____ Date: _____

Casing Squeeze(s): _____ to _____ w / _____ sacks of cement, _____ to _____ w / _____ sacks of cement. Date: _____
(top) (bottom) (top) (bottom)Do you have a valid Oil & Gas Lease? ☐ Yes ☐ NoDepth and Type: ☐ Junk in Hole at _____ ☐ Tools in Hole at _____ Casing Leaks: ☐ Yes ☐ No Depth of casing leak(s): _____
(depth) (depth)Type Completion: ☐ ALT. I ☐ ALT. II Depth of: ☐ DV Tool: _____ w / _____ sacks of cement ☐ Port Collar: _____ w / _____ sack of cement
(depth) (depth)

Packer Type: _____ Size: _____ Inch Set at: _____ Feet

Total Depth: _____ Plug Back Depth: _____ Plug Back Method: _____

Geological Data:**Formation Name**

Formation Top Formation Base

Completion Information

1. _____ At: _____ to _____ Feet Perforation Interval _____ to _____ Feet or Open Hole Interval _____ to _____ Feet

2. _____ At: _____ to _____ Feet Perforation Interval _____ to _____ Feet or Open Hole Interval _____ to _____ Feet

UNDER PENALTY OF PERJURY I HEREBY ATTEST THAT THE INFORMATION CONTAINED HEREIN IS TRUE AND CORRECT TO THE BEST OF MY KNOWLEDGE

Submitted Electronically

**Do NOT Write in This
Space - KCC USE ONLY**

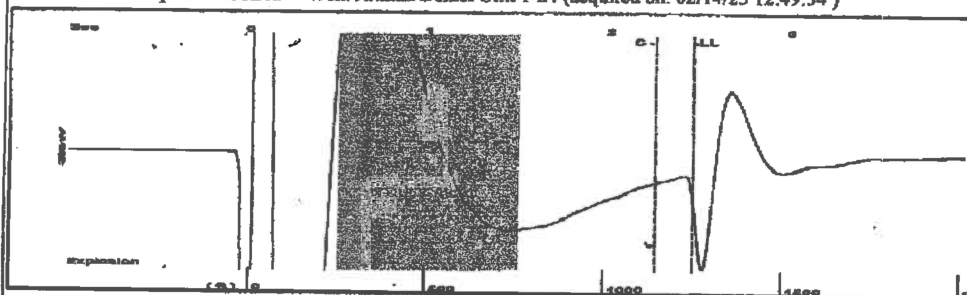
Date Tested: _____ Results: _____ Date Plugged: _____ Date Repaired: _____ Date Put Back in Service: _____

Review Completed by: _____ Comments: _____

TA Approved: ☐ Yes ☐ Denied Date: _____**Mail to the Appropriate KCC Conservation Office:**

	KCC District Office #1 - 210 E. Frontview, Suite A, Dodge City, KS 67801	Phone 620.682.7933
	KCC District Office #2 - 3450 N. Rock Road, Building 600, Suite 601, Wichita, KS 67226	Phone 316.337.7400
	KCC District Office #3 - 137 E. 21st St., Chanute, KS 66720	Phone 620.902.6450
	KCC District Office #4 - 2301 E. 13th Street, Hays, KS 67601-2651	Phone 785.261.6250

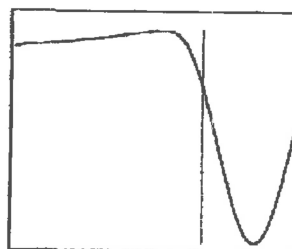
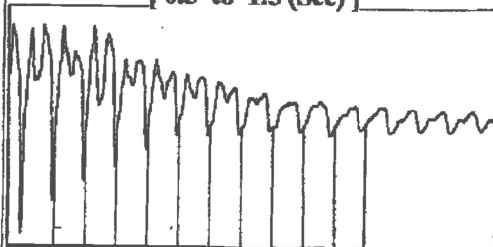
Group: Olmitz Area Well: Axman Demel Unit 1-24 (acquired on: 02/14/25 12:49:34)



Filter Type High Pass Automatic Collar Count Yes
 Manual Acoustic Veloc 993.73 ft/s Manual JTS/sec 15.674

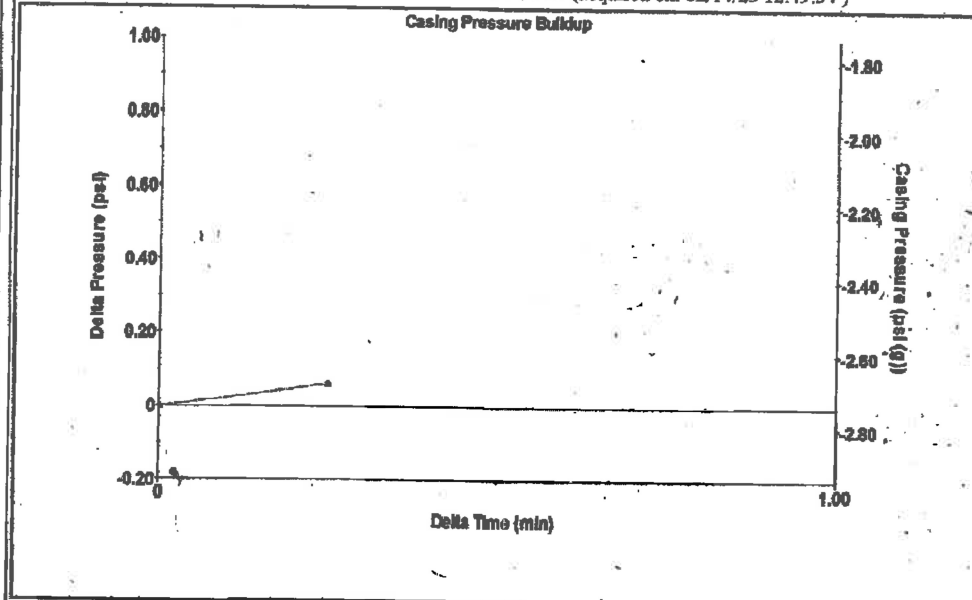
Time 2.459 sec
 Joints 39.4419 Jts
 Depth 1250.31 ft

[0.5 to 1.5 (Sec)]



Analysis Method: Automatic

Group: Olmitz Area Well: Axman Demel Unit 1-24 (acquired on: 02/14/25 12:49:34)



Change in Pressure 0.06 psi
 Change in Time 0.25 min

PT13446
 Range

0 - 2 psi

Group: Olmitz Area Well: Axman Demel Unit 1-24 (acquired on: 02/14/25 12:49:34)

Production
 Current Potential
 Oil -*- BBL/D
 Water -*- BBL/D
 Gas -*- Mscf/D
 IPR Method Vogel
 PBHP/SBHP -*-
 Production Efficiency 0.0

Oil 40 deg API
 Water 1.05 Sp.Gr.H2O
 Gas 0.95 Sp.Gr.AIR

Acoustic Velocity 1016.92 ft/s

Casing Pressure -2.7 psi (g)
 Casing Pressure Buildup 0.1 psi
 0.25 min
 Gas/Liquid Interface Pressure -2.2 psi (g)

Liquid Level Depth
 1250.31 ft

Pump Intake Depth
 3320.00 ft
 Formation Depth
 3264.00 ft

Formation Submergence
 Total Gaseous Liquid Column HT (TVD) 2070 ft
 Equivalent Gas Free Liquid HT (TVD) 1788 ft

Acoustic Test

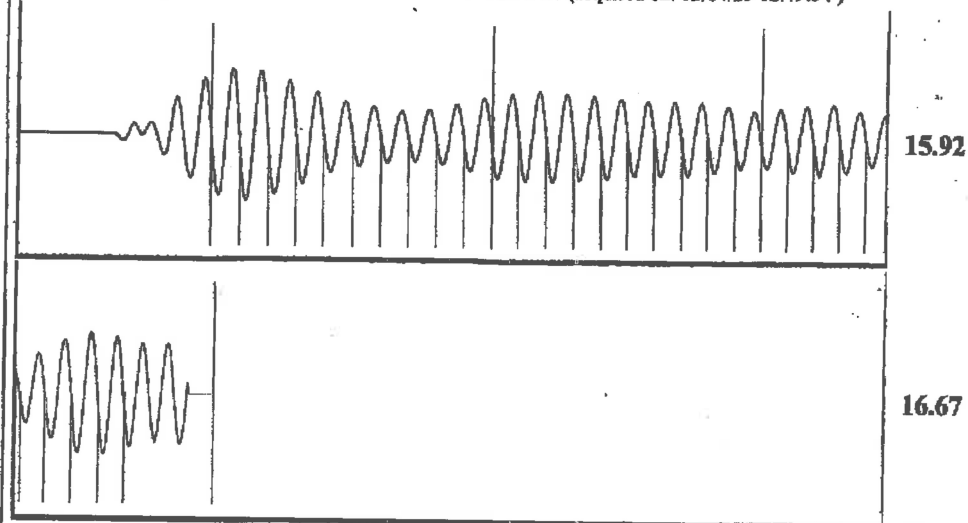


Producing

Annular Gas Flow 2 Mscf/D
 % Liquid 86 %

Pump Intake 598.5 psi (g)
 Producing BHP 580.5 psi (g)
 Static BHP -*- psi (g)

Group: Olmitz Area Well: Axman Demel Unit 1-24 (acquired on: 02/14/25 12:49:34)



Acoustic Velocity 1016.92 ft/s Joints counted 29
 Joints Per Second 16.0398 Jts/sec Joints to liquid level 39.4419
 Depth to liquid level 1250.31 ft Filter Width 13.674 17.674
 Automatic Collar Count Yes Time to 1st Collar 0.444 2.252

Conservation Division
District Office No. 4
2301 E. 13th Street
Hays, KS 67601-2651



Phone: 785-261-6250
<http://kcc.ks.gov/>

Andrew J. French, Chairperson
Dwight D. Keen, Commissioner
Annie Kuether, Commissioner

Laura Kelly, Governor

02/27/2025

Loveness Mpanje
F. G. Holl Company L.L.C.
9431 E CENTRAL STE 100
WICHITA, KS 67206-2563

Re: Temporary Abandonment
API 15-009-25057-00-00
AXMAN-DEMEL 1-24
W/2 Sec.24-17S-15W
Barton County, Kansas

Dear Loveness Mpanje:

"Your temporary abandonment (TA) application for the well listed above has been approved. In accordance with K.A.R. 82-3-111 the TA status of this well will expire 09/04/2025.

- * If you return this well to service or plug it, please notify the District Office.
- * If you sell this well you are required to file a Transfer of Operator form, T-1.
- * If the well will remain temporarily abandoned, you must submit a new TA application, CP-111, before 09/04/2025.

You may contact me at the number above if you have questions.

Very truly yours,

RICHARD WILLIAMS"